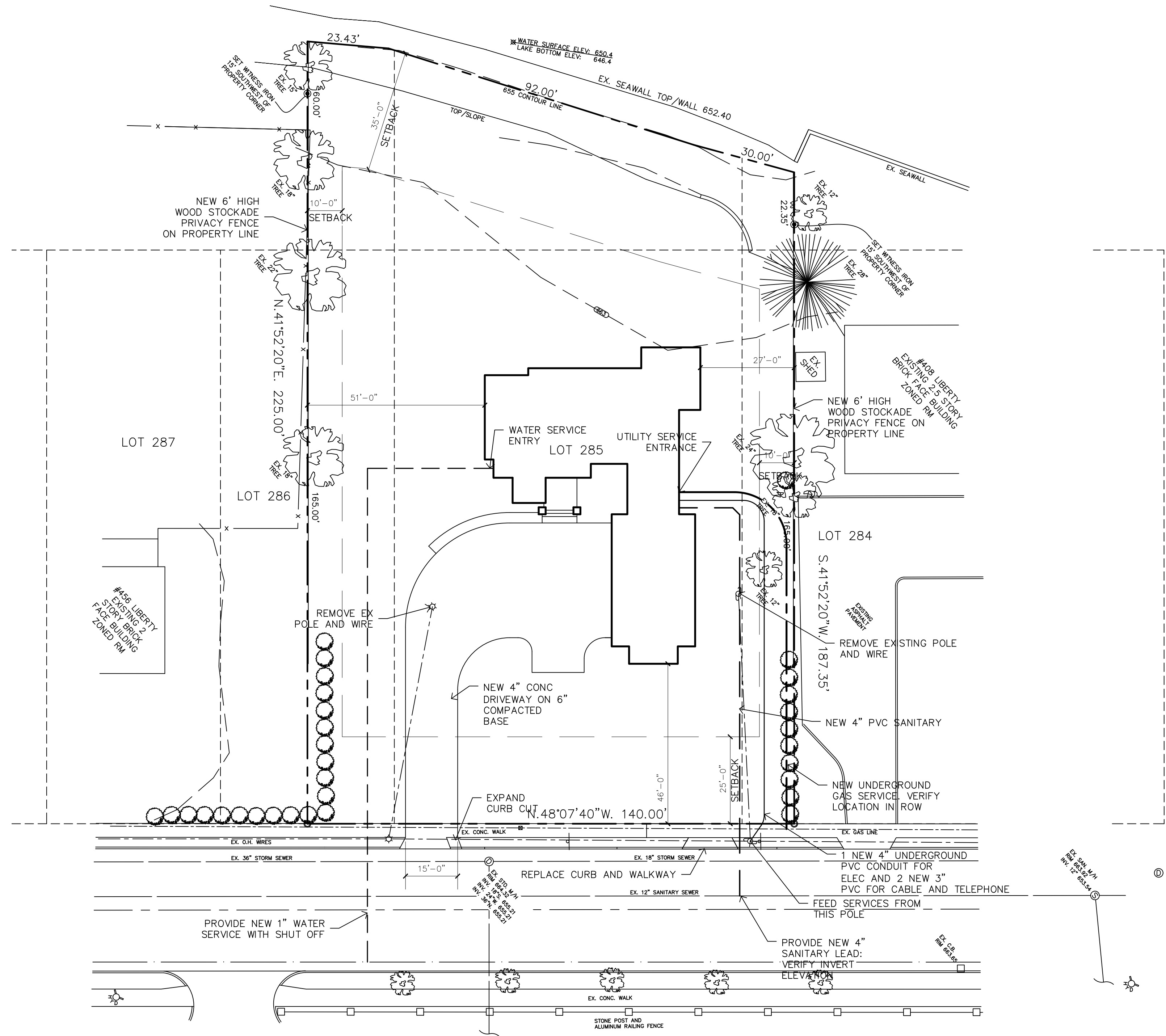


**SITE NOTES**

- IT SHALL BE THE CONTRACTOR'S RESPONSIBILITY TO VERIFY AND OBTAIN ANY INFORMATION NECESSARY REGARDING THE PRESENCE OF UNDERGROUND UTILITIES THAT MIGHT AFFECT HIS PERFORMANCE.
- CLASS "B" BEDDING SHALL BE USED UNLESS OTHERWISE NOTED. ALL STORM SEWERS ARE TO BE INSTALLED ON CLASS "B" BEDDING.
- NO UNDERGROUND WORK SHALL BE INSTALLED ON WEEKENDS OR HOLIDAYS.
- ALL JOINTS ARE TO BE PREMIUM JOINTS.
- ALL TRENCHES GREATER THAN 5 FEET FROM ANY EXISTING OR PROPOSED PAVEMENT OR SIDEWALK SHALL BE BACKFILLED WITH EXCAVATED MATERIAL AND COMPACTED TO GRADE TO 85% MAXIMUM UNIT WEIGHT. ALL BACKFILLED MATERIAL SHALL BE FREE FROM CINDERS, ASH, REFUSE OF ANY KIND, VEGETATION OR ORGANIC MATTER, BOULDERS, ROCKS, ROOTS, STUMPS, TREES, TIMBERS, FROZEN MATERIAL, OR OTHER MATERIALS WHICH IN THE OPINION OF THE INSPECTOR ARE UNSUITABLE.
- ALL STORM SEWER TRENCHES UNDER OR WITHIN FIVE FEET OF ANY EXISTING OR PROPOSED PAVEMENT SHALL BE BACKFILLED UP TO SUBGRADE WITH CLASS II GRANULAR MATERIAL AS DEFINED BY M.D.O.T. 8.02.05 PLACED IN 12 INCH LIFTS AND THOROUGHLY COMPACTED TO 95% MAXIMUM UNIT WEIGHT.
- NOTIFY THE BUILDING DEPARTMENT A MINIMUM OF 48 HOURS PRIOR TO THE START OF CONSTRUCTION.
- ALL CONSTRUCTION MUST CONFORM TO THE CURRENT STANDARDS AND SPECIFICATIONS ADOPTED BY THE GOVERNING AUTHORITIES.
- CALL MISS-DIG (1-800-482-7171) A MINIMUM OF THREE WORKING DAYS PRIOR TO THE START OF CONSTRUCTION.
- ALL EXCAVATIONS WITHIN FIVE FEET OF EXISTING OR PROPOSED PAVEMENT SHALL BE BACKFILLED AND COMPACTED IN 6 INCH LIFTS WITH CLASS II MDOT SAND, COMPACTED TO 95% MAXIMUM UNIT WEIGHT AS DETERMINED BY THE AASHTO T-1 OR THE M.D.O.T. CONE DENSITY TESTING METHOD.
- THE CONTRACTOR IS RESPONSIBLE FOR ALL UTILITIES DAMAGED DURING CONSTRUCTION BY THIS CONTRACTOR AND SHALL REPAIR OR REPLACE ALL SUCH DAMAGED UTILITIES.
- THE CONTRACTOR IS RESPONSIBLE FOR OBTAINING ALL PERMITS INCLUDING A PERMIT TO OCCUPY PUBLIC UTILITY EASEMENTS OR PUBLIC RIGHTS OF WAY.
- TRENCH BACKFILL IN COUNTY RIGHT OF WAY SHALL CONFORM TO THE COUNTY REQUIREMENTS AND BE SUBJECT TO THE APPROVAL OF THE COUNTY ENGINEER.
- ALL TRENCHES ACROSS ROADWAYS, DRIVEWAYS, SIDEWALKS, AND PARKING LOTS SHALL BE COMPACTED TO 95% PROCTOR MAXIMUM.
- ALL SERVICE LEAD SIZES ARE TO BE OBTAINED FROM THE GOVERNING AUTHORITY.
- EARTHEN BERMS SHALL NOT BE CONSTRUCTED OVER PUBLIC UTILITIES.
- LOCATION OF ALL UTILITIES SHOWN ARE APPROXIMATE ONLY.
- THE GENERAL CONTRACTOR IS TO DISCONNECT ALL UTILITIES DURING CONSTRUCTION AND ARRANGE FOR UTILITIES TO BE RE-ESTABLISHED AFTER CONSTRUCTION.
- THE GENERAL CONTRACTOR IS TO SECURE THE SOIL EROSION CONTROL PERMIT. ALL SOIL EROSION AND SILT MUST BE CONTROLLED AND CONTAINED ON SITE.
- ALL WATERMAINS, SANITARY SEWERS, AND STORM SEWERS SHALL BE INSPECTED BY THE LOCAL GOVERNING MUNICIPALITY.
- TRENCHING AND BACKFILL IN THE COUNTY RIGHT-OF-WAY SHALL CONFORM TO THE COUNTY REQUIREMENTS AND SHALL BE SUBJECT TO THE APPROVAL OF THE COUNTY ENGINEER.
- ALL SERVICE LEAD SIZES AND LOCATIONS ARE TO BE OBTAINED FROM THE LOCAL GOVERNING WATER AND SEWER DEPARTMENT.
- UNDERGROUND UTILITY SYSTEMS MUST BE CONSTRUCTED IN THEIR ENTIRETY AS SHOWN AND NOT IN PHASES WITHOUT THE APPROVAL OF THE LOCAL GOVERNING WATER AND SEWER DEPARTMENT.
- THE LOCAL GOVERNING FIRE DEPARTMENT SHALL BE CONTACTED SO AS TO VERIFY THE FLUSHING OF UNDERGROUND MAINS AND LEAD-IN CONNECTIONS.



**1 SITE PLAN**  
 SCALE: 1" = 20'  
 PROJECT NORTH

- NOTES
- COORDINATE UTILITY CONNECTIONS WITH CITY.
  - PATCH ROADWAY PER CITY REQUIREMENTS.

- NOTES
- MULCH ALL PLANTS WITH 3" DEEP SHREDED BARK ON WEED BARRIER.
  - USE TREE WRAP ON ALL SHADE TREE TRUNKS.
  - ALL TREES AND SHRUBS TO BE BALLED AND BURLAPPED.
  - STOCKPILE TOPSOIL: REPLACE TOPSOIL IN 4" DEPTHS. SUPPLEMENT STOCKPILED TOPSOIL WITH CLEAN, FRISKLE, FERTILE, NATURAL LOAM OBTAINED FROM A WELL DRAINED SOURCE, FREE OF CONTAMINANTS, TO 4" DEPTHS AT ALL PLANTING AREAS, INCLUDING AREAS TO RECEIVE GRASS SEED.
  - POLYETHYLENE EDGING TO BE USED FOR EDGING, PLANTING BEDS, AND TO SEPARATE LAWN FROM PLANTING AREAS.
  - ALL PLANT MATERIALS TO BE HARDY IN THE COUNTY IN WHICH THEY ARE TO BE PLANTED.
  - PLANTING METHODS TO BE IN CONFORMANCE WITH THE GOVERNING AUTHORITY REQUIREMENTS.
  - DECIDUOUS MATERIAL SHALL BE PLANTED BETWEEN MARCH 1 AND MAY 15 AND BETWEEN OCTOBER 1 UNTIL THE PREPARED SOIL BECOMES FROZEN.
  - CONIFEROUS MATERIAL SHALL BE PLANTED BETWEEN MARCH 1 AND JUNE 1.
  - GRASS SEED TO BE A BLEND OF 80% KENTUCKY BLUEGRASS, 20% PERENNIAL RYEGRASS, WITH 10% NUSSLE GRASS SEEDS, COMPLYING WITH STANDARDS OF THE OFFICIAL SEED ANALYSIS OF NORTH AMERICA FOR 85% PURITY, 80% GERMINATION AND 1% MAXIMUM WEED SEED, RECOMMENDED BY PRODUCER FOR FULL SUN EXPOSURE OF LAWN IN GEOGRAPHIC LOCATION OF PROJECT. CULTIVATE TO A DEPTH OF SIX INCHES, TILLING SURFACE TO A LEVEL, FINE TEXTURE. GRADE AND ROLL PREPARED LAWN SURFACE. WATER THOROUGHLY BUT DO NOT CREATE A MUDDY SOIL CONDITION. SOW GRASS SEED UNIFORMLY IN TWO DIRECTIONS IN THE QUANTITY RECOMMENDED BY THE SEED PRODUCER, EXCEPT AS OTHERWISE INDICATED. RAKE SEED LIGHTLY INTO TOP 1/8 INCH LAWN SURFACE. WATER THOROUGHLY WITH A FINE SPRAY. PROTECT SEEDING AREAS AGAINST EROSION BY SPREADING STRAW TO A UNIFORM LOOSE DEPTH OF 1/2 INCHES.
  - ALL PLANT MATERIAL SHALL BE WARRANTED FOR A ONE YEAR PERIOD. ALL UNHEALTHY AND DEAD MATERIAL SHALL BE REPLACED WITHIN THE NEXT APPROPRIATE PLANTING PERIOD.

**SCOTT JONES RESIDENCE**  
 430 N LIBERTY, BELLEVILLE, MI 48111

**HOPPE DESIGN, LLC**  
 47032 MERRIDE, BELLEVILLE, MI 48111  
 734-215-2492

REVISIONS  
 ADD 2 9.27.22  
 ADD 3 10.6.22

PROJECT: 2205  
 DATE: 4.30.22  
 DRAWN: WCH  
 CHECKED: WCH

**VERIFY ALL DIMENSIONS IN FIELD**

**SITE PLAN**

**SP101**

COPYRIGHT ALL RIGHTS RESERVED BY WAYDE C. HOPPE, ARCHITECT  
 NOT TO BE COPIED OR REPRODUCED WITHOUT WRITTEN PERMISSION