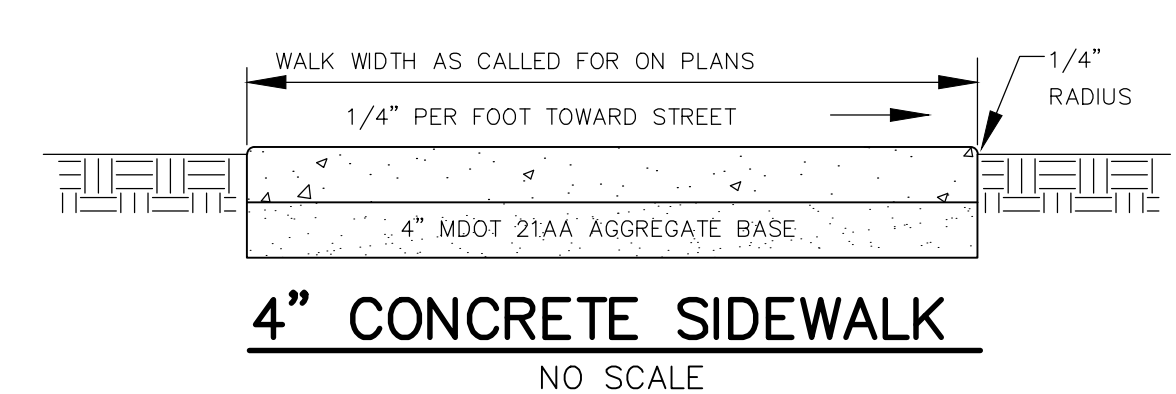
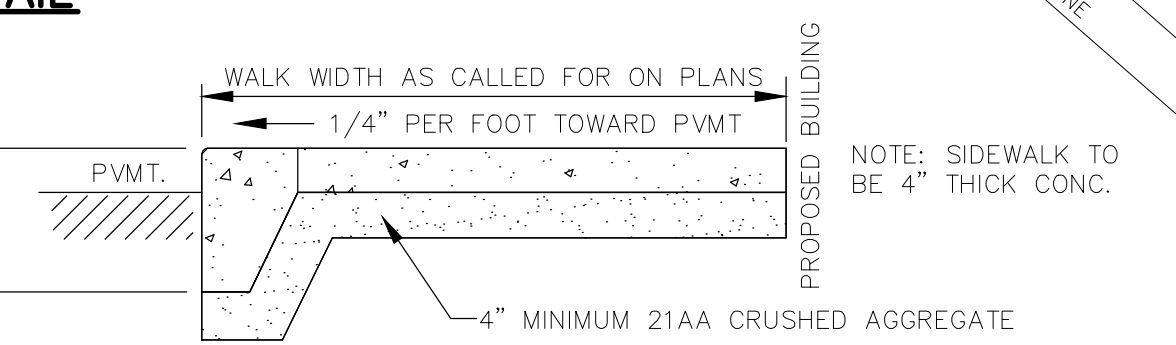


- UTILITY CROSSINGS**
- X-ING #1 INV. STORM SEWER 659.32, LOWER 6" WATER MAIN TO T/PIPE ELEVATION 657.50
  - X-ING #2 INV. STORM SEWER 658.90, LOWER 6" WATER MAIN TO T/PIPE ELEVATION 657.00
  - X-ING #3 INV. STORM SEWER 658.65, LOWER 6" WATER MAIN TO T/PIPE ELEVATION 657.00
  - X-ING #4 INV. STORM SEWER 659.60, T/PIPE ELEVATION 657.50
  - X-ING #5 INV. STORM SEWER 659.40, LOWER 6" WATER MAIN TO T/PIPE ELEVATION 657.00

**CURB & GUTTER DETAIL**  
USE CURB DETAIL 'F2'

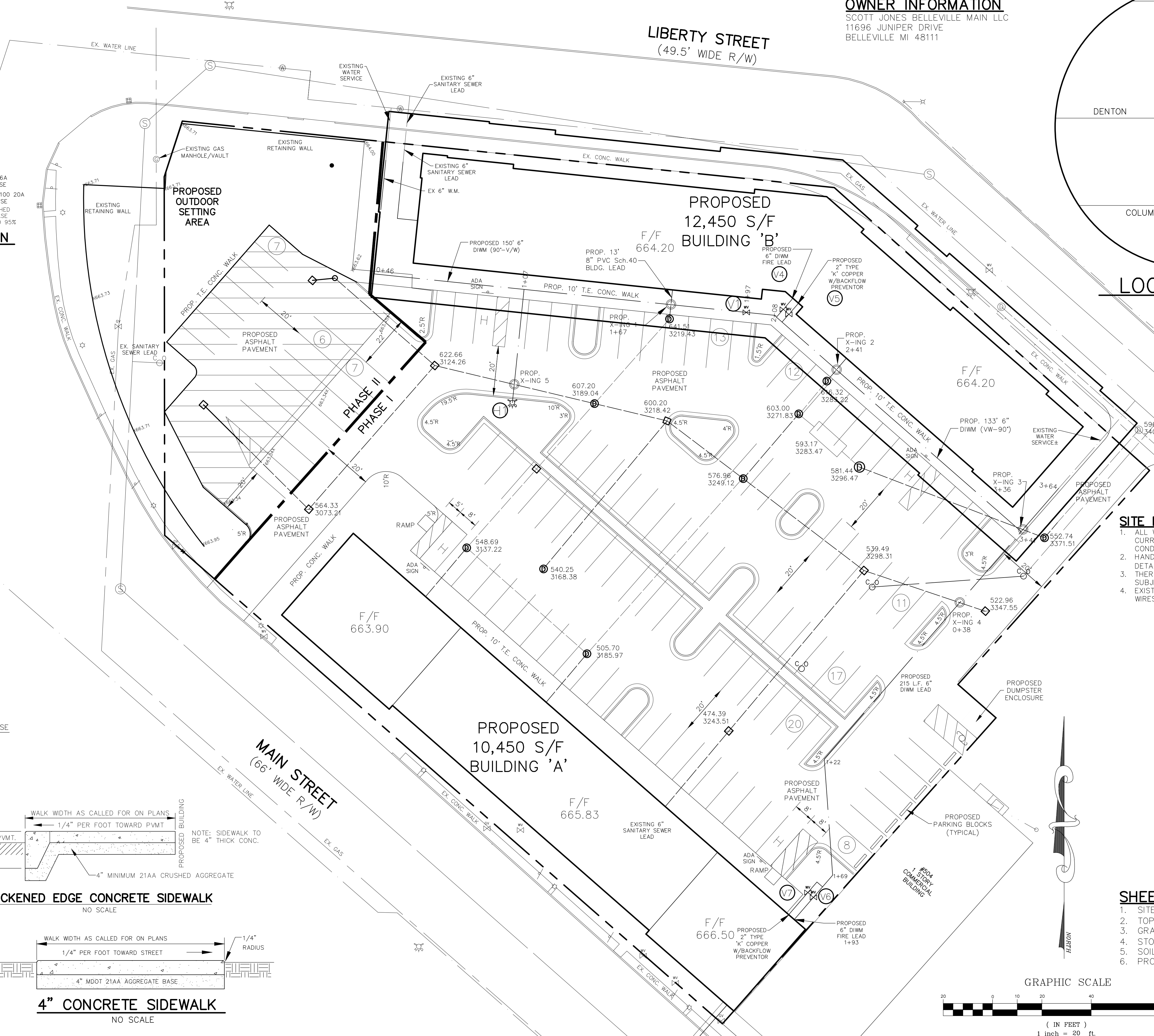
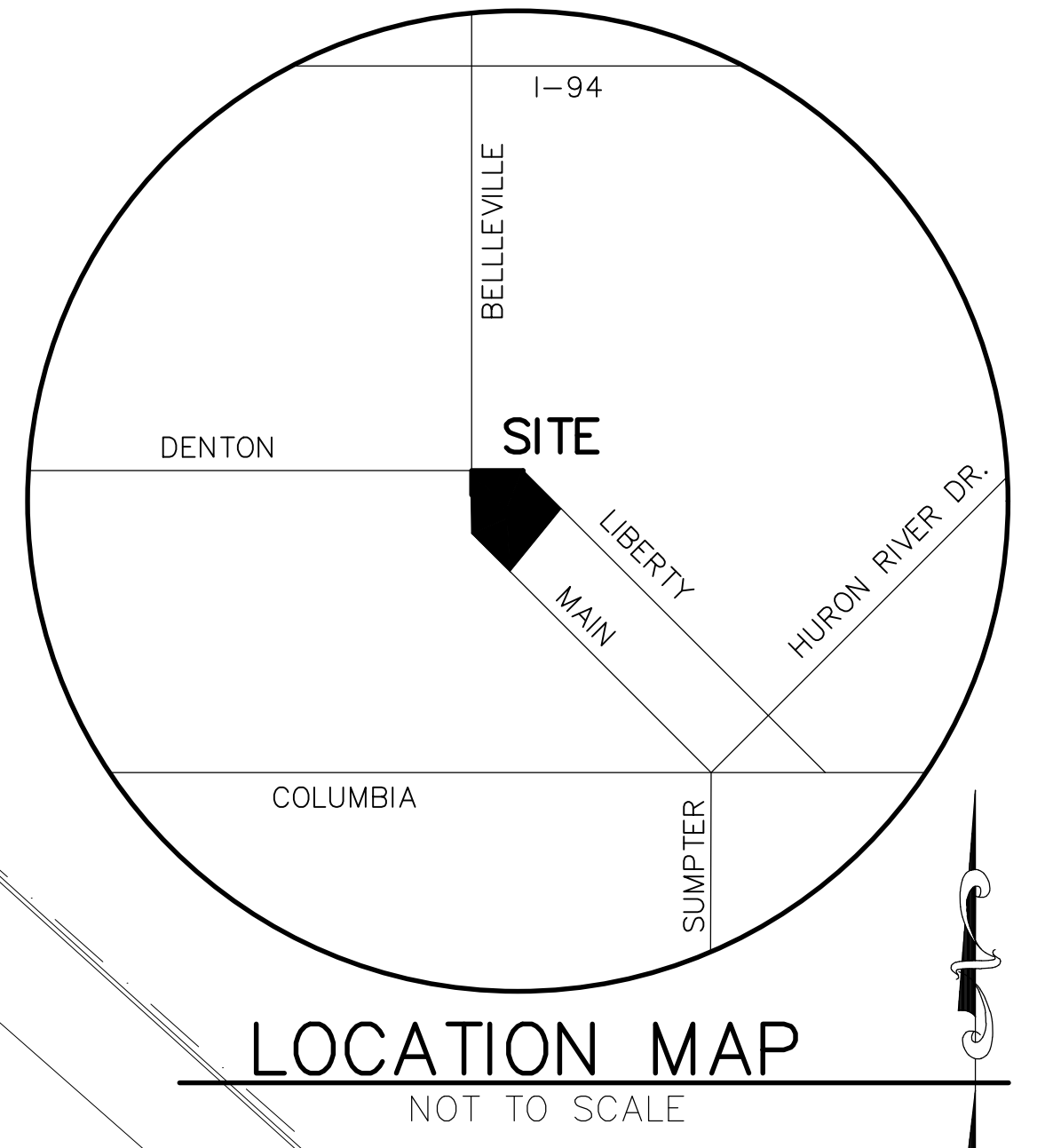
DETAIL	DIMENSIONS	LANE TIES	CONCRETE CU. YD. / LIN. FT.
F1	1'-6"	7/8"	AS SHOWN 0.0424
F2	1'-6"	7/8"	OMITTED 0.0424
F3	2'-0"	1 3/8"	AS SHOWN 0.0550
F4	2'-0"	1 3/8"	OMITTED 0.0550
F5	2'-6"	1 7/8"	AS SHOWN 0.0677
F6	2'-6"	1 7/8"	OMITTED 0.0677



WHEN DIGGING OR WORKING NEAR OVERHEAD ELECTRIC WIRES IN MICHIGAN, CALL **MISS DIG**

3 WORKING DAYS BEFORE STARTING YOUR PROJECT  
811 (TOLL FREE)

**OWNER INFORMATION**  
SCOTT JONES BELLEVILLE MAIN LLC  
11696 JUNIPER DRIVE  
BELLEVILLE MI 48111



- SITE PLAN NOTES**
- ALL WORK SHALL BE DONE IN ACCORDANCE WITH THE CURRENT STANDARDS, SPECIFICATIONS, AND GENERAL CONDITIONS OF THE CITY OF BELLEVILLE.
  - HANDICAP RAMP SHALL BE CONSTRUCTED PER MDOT DETAIL R-28 (CURRENT REVISION).
  - THERE IS NO EXISTING PARKING SPACE STRIPPING ON THE SUBJECT PARCEL.
  - EXISTING ELECTRIC, PHONE, CABLE IS VIA OVERHEAD WIRES.

- LEGEND**
- EX. SIGN
  - EX. SANITARY MANHOLE
  - EX. HYDRANT
  - EX. LIGHT POLE
  - EX. UTILITY POLE
  - EX. VALVE WELL
  - EX. FENCE
  - PROPOSED HYDRANT
  - PROPOSED SHUT-OFF
  - PROPOSED CLEANOUT
  - PROPOSED STORM LINE
  - PROPOSED SANITARY LINE
  - PROPOSED WATER LINE

- SHEET INDEX**
- SITE PLAN
  - TOPOGRAPHIC SURVEY/REMOVALS PLAN
  - GRADING PLAN
  - STORM SEWER DESIGN/UTILITY PLAN
  - SOIL EROSION PLAN
  - PROFILES

