

LEGEND

- MANHOLE
- CATCH BASIN
- SEWER CLEAN OUT
- GAS METER
- GAS SHUT OFF VALVE
- VALVE BOX
- GATE VALVE & WELL
- WATER SHUT OFF VALVE
- FIRE HYDRANT
- SPRINKLER VALVE BOX
- LAWN SPRINKLER HEAD
- UNVERIFIED MAPPED OBJECT
- ELECTRIC RISER OR METER
- TELEPHONE RISER
- CABLE TV RISER
- AIR CONDITION UNIT
- UTILITY POLE
- UTILITY POLE W/ LAMP EXTENSION (ARROW INDICATES DIRECTION OF ARM)
- LIGHT POLE
- LIGHT POLE WITH LAMP EXTENSION
- TRAFFIC SIGNAL
- POLE W/ TRAFFIC SIGNAL (OVER ROAD)
- GUY WIRE
- GROUND LEVEL/ DECORATIVE LIGHTING
- FLAG POLE
- METAL OR CONC. POST
- MAILBOX
- SIGN
- WATER FOUNTAIN
- PARKING METER
- BILLBOARD OR LARGE SIGN
- BASKETBALL HOOP
- BOULDER
- STATUE OR SCULPTURE
- BENCH
- BIKE RACK
- PICNIC TABLE
- SOCCER GOAL
- STUMP
- DS-S DOWNSPOUT INTO STORM DRAIN
- DS-G DOWNSPOUT TO GROUND
- CONIFEROUS TREE
- DECIDUOUS TREE
- DECIDUOUS SHRUB
- CONIFEROUS SHRUB
- SECTION CORNER
- TRAVELER POINT
- STRUCTURE NUMBER
- SDA POINT NO.
- SPOT ELEVATION
- TC TOP OF CURB ELEVATION
- GU GUTTER ELEVATION
- TP TOP OF PAVEMENT ELEVATION
- EM EDGE OF METAL ELEVATION
- TW TOP OF WALK ELEVATION
- TWALL TOP OF WALL ELEVATION
- BWALL BOTTOM OF WALL ELEVATION
- GR GROUND ELEVATION
- UG UNDERGROUND
- FO FIBER OPTIC
- CONC CONCRETE
- ASPH ASPHALT
- FF FINISH FLOOR ELEVATION
- DL DOOR LEDGE ELEVATION
- F.I FOUND IRON
- F.M FOUND MONUMENT
- F.P.K FOUND P.K. NAIL
- S.I SET IRON W/SDA CAP
- S.P.K SET P.K. NAIL
- S.P.K.TAG SET P.K. NAIL W/SDA TAG
- MAG SET MAGNETIC NAIL
- MAG.TAG SET MAGNETIC NAIL W/SDA TAG
- M MEASURED
- R RECORD
- C CALCULATED
- INV. INVERT ELEVATION
- CMP CORRUGATED METAL PIPE
- G GAS
- SN SANITARY SEWER (SAN)
- ST STORM SEWER (STM)
- WM WATERMAIN (WM)
- OH OVERHEAD WIRE
- STE STEAM LINE
- O OIL LINE
- F UG FIBER (COMM.)
- E UG ELECTRIC (ELEC.)
- T UG PHONE (PH)
- C UG CABLE (CBL)
- CHAIN LINK FENCE (CL)
- WOOD FENCE
- WIRE FENCE (WF)
- GUARD RAIL
- EDGE OF BRUSHWOODS
- CENTERLINE OF DITCH
- CULVERT
- MAJOR CONTOUR
- MINOR CONTOUR
- BOUNDARY LINES
- ROW LINES
- SECTION LINES
- PROPERTY LINES
- ASPHALT
- CONCRETE
- GRAVEL/DIRT/MULCH
- BRICK/PAVERS
- WATER
- WATER W/ VEGETATION

LOCATION MAP

NOT TO SCALE

SHEET INDEX

- C1.1 - TOPOGRAPHICAL SURVEY
- C2.1 - DEMOLITION PLAN
- C3.1 - PAVING AND LAYOUT PLAN
- C4.1 - GRADING PLAN
- C5.1 - SOIL EROSION AND SEDIMENTATION CONTROL PLAN

SURVEY NOTES

1. TOPOGRAPHIC AND/OR BOUNDARY SURVEY, INCLUDING: PROPERTY LINES, LEGAL DESCRIPTION, EXISTING UTILITIES, SITE TOPOGRAPHY WITH SPOT ELEVATIONS, OUTSTANDING PHYSICAL FEATURES AND EXISTING STRUCTURE LOCATIONS MAY BE BASED ON RECORD DATA NOT MEASURED IN THE FIELD.
2. THE CONTRACTOR IS RESPONSIBLE FOR CONFIRMING ALL INFORMATION SHOWN ON THIS SURVEY AND NOTIFYING THE ENGINEER IMMEDIATELY OF ANY DISCREPANCIES.
3. CONTRACTOR SHALL UTILIZE A PRIVATE UTILITY LOCATOR TO STATE PUBLIC AND PRIVATE UTILITY LOCATIONS PRIOR TO START OF CONSTRUCTION. IT IS THE CONTRACTOR'S RESPONSIBILITY, AT NO COST TO THE PROJECT, TO REPAIR OR REPLACE ANY DAMAGE CAUSED TO EXISTING UTILITIES.
4. CONTRACTOR SHALL CONTACT MISS DIG (811) THREE WORKING DAYS PRIOR TO THE START OF CONSTRUCTION FOR STAKING OF UTILITIES.

BENCHMARK DESCRIPTIONS

DATUM: GPS-DERIVED NAVD88

SITE BM#100	SET SCRIBED "X" ON THE SOUTHWEST SIDE OF LIGHT POLE BASE LOCATED IN THE EAST PARKING LOT.	ELEV.=672.71
SITE BM#101	SET SCRIBED "X" ON THE SOUTHEAST SIDE OF LIGHT POLE BASE LOCATED AT THE MOST WESTERLY LIGHT POLE IN THE WEST PARKING LOT.	ELEV.=673.62
SITE BM#102	SET SCRIBED "X" IN CONCRETE WALK AT THE END OF SIDEWALK LOCATED 80' NORTHWEST OF STORM MANHOLE AND 110' WEST OF WEST SIDE OF SCHOOL BUILDING.	ELEV.=671.04
SITE BM#103	SET MAG NAIL IN THE ROOT OF AN 8" MAPLE AT THE SOUTHWEST CORNER OF THE ASPHALT PAD EAST OF THE PLAY AREA SOUTH OF THE BUILDING.	ELEV.=671.42

LEGAL DESCRIPTION

PT OF NW 1/4 OF SEC 26 T3S R9E BEG S88DEG 06M 20S E 765.13FT FROM THE W 1/4 COR OF SEC 26 TH S88DEG 06M 20S E 680.28FT TH N1DEG 21M 07S E 812.36FT TH NWLY ON A CURVE CONC TO NE RAD 17188.66FT ARC 331.37FT AND N67DEG 14M 27S W 191.11FT AND NWLY ON A CURVE CONC TO THE NE RAD 22918.33FT ARC 219.31FT TH S1DEG 21M 47S W 1077.85FT POB EXC NELY 60FT 13.98 AC

SURVEYOR'S COMMENTS

1. THIS TOPOGRAPHICAL MAP IS BASED UPON A FIELD SURVEY PERFORMED BY SPALDING DEDECKER INC. DURING JANUARY OF 2023.
2. THIS SURVEY HAS BEEN PREPARED WITHOUT THE BENEFIT OF A CURRENT TITLE SEARCH THAT WOULD IDENTIFY ANY RECORDED EASEMENTS THAT ENCUMBER THIS PROPERTY. THEREFORE, THIS PROPERTY MAY BE SUBJECT TO EASEMENTS, RIGHT-OF-WAY TAKINGS AND RESTRICTIVE COVENANTS THAT ARE NOT SHOWN.
3. THE BASIS OF BEARINGS IS THE STATE PLANE GRID.
4. THE COORDINATE SYSTEM FOR THIS SURVEY IS THE STATE PLANE COORDINATE SYSTEM, MICHIGAN SOUTH ZONE (2113), BASED ON NAD83 (NRS2011). UNITS ARE INTERNATIONAL FEET. COORDINATES WERE ESTABLISHED USING A DATA LINK TO THE MDOT CONTINUOUSLY OPERATING REFERENCE STATIONS (CORS).
5. THE VERTICAL DATUM OF THIS SURVEY IS BASED UPON THE NORTH AMERICAN VERTICAL DATUM OF 1988 (NAVD88) AS ESTABLISHED WITH RTK GPS MEASUREMENTS USING A DATA LINK TO THE MDOT CONTINUOUSLY OPERATING REFERENCE STATIONS (CORS).
6. THE UTILITY INFORMATION SHOWN ON THIS SURVEY IS BASED UPON A COMBINATION OF RECORD INFORMATION AND FIELD MEASUREMENTS. A MISS DIG DESIGN TICKET NUMBER OF 202212500246 HAS BEEN REFERENCED TO THIS PROJECT AND A UTILITY PROVIDER CHART IS SHOWN ON THIS DRAWING. THERE ARE NO ASSURANCES THAT ALL PROVIDERS HAVE RESPONDED AND THE SURVEYOR DOES NOT GUARANTEE THAT ALL UNDERGROUND UTILITIES ARE SHOWN AND/OR POSITIONED PROPERLY ON THIS DRAWING DUE TO AMBIGUOUS PLANS AND RECORDS PROVIDED TO US. THE INFORMATION SHOWN ON THIS DRAWING IS INTENDED TO BE USED AS A GUIDE FOR POSSIBLE UNDERGROUND UTILITY CONFLICTS. IT IS THE RESPONSIBILITY OF OTHERS TO RESOLVE THE ACTUAL LOCATION OF ANY UNDERGROUND UTILITY THROUGH THE MISS DIG FIELD VERIFICATION SYSTEM PRIOR TO ANY SITE EXCAVATION. CALL 811 OR 800-492-7171.

UTILITY PROVIDER	CONTACT #	MISS DIG RESULTS	DATE
AT&T FIBER OPTICS	6789173174	RECEIVED	12/27/2022
AT&T TELEPHONE	8007789140	RECEIVED	12/27/2022
BP-AMOCO PIPELINE CO GAS	8005486482	RECEIVED	12/16/2022
COMCAST CABLE TV	8559628525	RECEIVED	12/27/2022
COMCAST FIBER OPTICS	8559628525	RECEIVED	12/27/2022
DTE ENERGY (ELECTRIC) ELECTRIC	3134075364	RECEIVED	1/6/2023
DTE ENERGY (GAS) GAS	2483187839	RECEIVED	12/16/2022
ENBRIDGE ENERGY PARTNERS LP GAS	2697814434	RECEIVED	12/20/2022
VAN BUREN TOWNSHIP POTABLE WATER	7346998900		
VAN BUREN TOWNSHIP SANITARY SEWER	7346998900		
WOLVERINE PIPELINE COMPANY PIPELINE	8883375004	RECEIVED	12/16/2022

OWNER

VAN BUREN PUBLIC SCHOOLS
555 W. COLUMBIA AVE.
BELLEVILLE, MI 48111
PHONE: (734) 697-9123
FAX: (734) 697-6385

905 South Blvd. East
Rochester Hills, MI 48307
Phone (248) 844-5400
Fax (248) 844-5404

15 E. Baltimore St.
Detroit, MI 48202
Phone (313) 305-9120
Fax (313) 305-9121

27333 Meadowbrook Rd., Suite 210
Novi, MI 48377
Phone (248) 844-6274

400 Ann St. NW, Suite 204
Grand Rapids, MI 49504
Phone (616) 885-5802

www.sda-eng.com
(800) 598-1600



Know what's below.
Call before you dig.

PRIOR TO CONSTRUCTION, ALL LOCATIONS AND DEPTHS OF EXISTING UTILITIES (IN CONFLICT WITH PROPOSED IMPROVEMENTS) SHALL BE VERIFIED IN THE FIELD. CALL MISS DIG 3 WORKING DAYS PRIOR TO CONSTRUCTION.

UTILITY NOTE

UTILITY INFORMATION ON THIS DRAWING MAY BE FROM INFORMATION DISCLOSED TO THIS FIRM BY THE VARIOUS UTILITY COMPANIES, CITY/COUNTY AGENCIES AND OTHER VARIOUS SOURCES. UNDERGROUND UTILITIES WHICH ARE ON PRIVATE PROPERTY ARE USUALLY NOT DELINEATED UPON A UTILITY COMPANY'S PUBLISHED PLANS. THEIR LOCATION, IF SHOWN UPON THIS SURVEY, ARE APPROXIMATED FROM FOUND POINT MARKSTAKES, ETC. AS LOCATED BY THIS FIRM FROM SOURCES WHICH ARE UNKNOWN. NO GUARANTEE IS GIVEN AS TO THE COMPLETENESS OR ACCURACY THEREOF.

COPYRIGHT © 2023 SPALDING DEDECKER ASSOCIATES, INC. THIS DRAWING AND THE SUBJECT MATTER CONTAINED THEREON IS PROPRIETARY AND IS NOT TO BE USED OR REPRODUCED WITHOUT WRITTEN PERMISSION OF SPALDING DEDECKER ASSOCIATES, INC.

VAN BUREN PUBLIC SCHOOLS SAVAGE ELEMENTARY CONCRETE IMPROVEMENTS

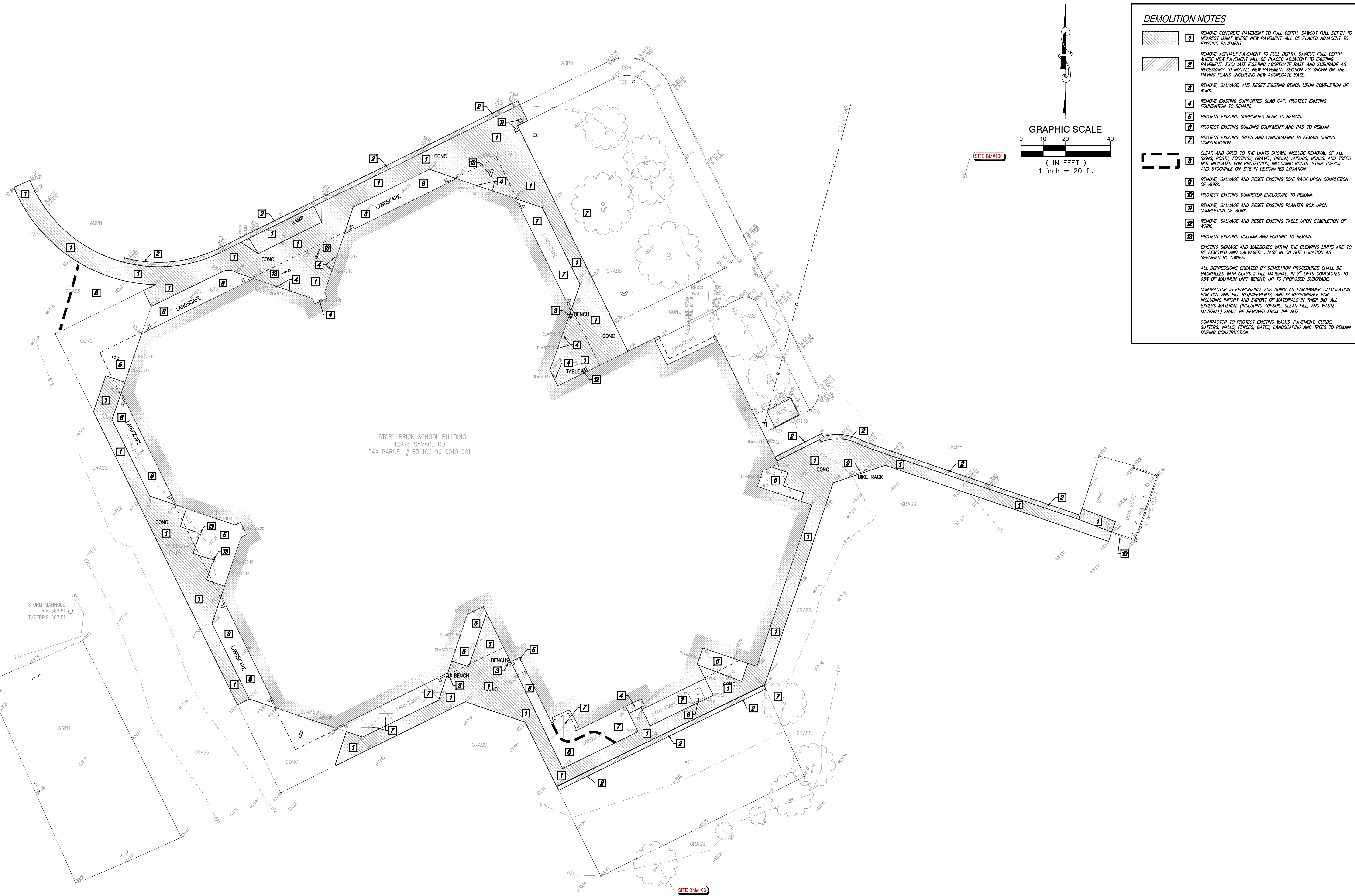
TOPOGRAPHICAL SURVEY

SECTION 26
TOWN 03 SOUTH RANGE 08 EAST
VAN BUREN TOWNSHIP
WAYNE COUNTY, MICHIGAN

NO.	DATE	REVISION
1	03-17-23	OWNER REVIEW
2	03-31-23	BIDS

VERIFY SCALES	
BAR IS ONE INCH ON ORIGINAL DRAWING	
IF NOT ONE INCH ON THIS SHEET, ADJUST SCALES ACCORDINGLY	
DRAFTER L.THORNTON	DATE 01-30-23
CHECKED D.JACKSON	DATE 01-30-23
FIELD LEADER J.LONERO	PROJECT SURVEYOR D.JACKSON
PROJECT MANAGER D.JACKSON	DEPARTMENT MANAGER G.PLATZ
JOB NO. NP22155TPG	DRAWING NO. NP22155TPG-DV
SCALE: 1" = 20'	SHEET NO. C1.1

Plotted: Mar 30, 2023, 9:49 AM by user: 1006
N: NP\NLD Projects\NP22155 - Savage ES\DWG\NP22155DEM.dwg



DEMOLITION NOTES

- 1** REMOVE CONCRETE PAVEMENT TO FULL DEPTH. SAWCUT FULL DEPTH TO NEAREST JOINT WHERE NEW PAVEMENT WILL BE PLACED ADJACENT TO EXISTING PAVEMENT.
 - 2** REMOVE ASPHALT PAVEMENT TO FULL DEPTH. SAWCUT FULL DEPTH WHERE NEW PAVEMENT WILL BE PLACED ADJACENT TO EXISTING PAVEMENT. EXCAVATE EXISTING AGGREGATE BASE AND SUBGRADE AS NECESSARY TO INSTALL NEW PAVEMENT SECTION AS SHOWN ON THE PAVING PLANS, INCLUDING NEW AGGREGATE BASE.
 - 3** REMOVE, SALVAGE, AND RESET EXISTING BENCH UPON COMPLETION OF WORK.
 - 4** REMOVE EXISTING SUPPORTED SLAB CAP. PROTECT EXISTING FOUNDATION TO REMAIN.
 - 6** PROTECT EXISTING SUPPORTED SLAB TO REMAIN.
 - 8** PROTECT EXISTING BUILDING EQUIPMENT AND PAD TO REMAIN.
 - 7** PROTECT EXISTING TREES AND LANDSCAPING TO REMAIN DURING CONSTRUCTION.
 - 8** CLEAR AND GRUB TO THE LIMITS SHOWN. INCLUDE REMOVAL OF ALL SIGNS, POSTS, FOOTINGS, GRAVEL, BRUSH, SHRUBS, GRASS, AND TREES NOT INDICATED FOR PROTECTION, INCLUDING ROOTS. STRIP TOPSOIL AND STOCKPILE ON SITE IN DESIGNATED LOCATION.
 - 9** REMOVE, SALVAGE AND RESET EXISTING BIKE RACK UPON COMPLETION OF WORK.
 - 10** PROTECT EXISTING DUMPSTER ENCLOSURE TO REMAIN.
 - 11** REMOVE, SALVAGE AND RESET EXISTING PLANTER BOX UPON COMPLETION OF WORK.
 - 12** REMOVE, SALVAGE AND RESET EXISTING TABLE UPON COMPLETION OF WORK.
 - 13** PROTECT EXISTING COLUMN AND FOOTING TO REMAIN.
- EXISTING SIGNAGE AND MAILBOXES WITHIN THE CLEARING LIMITS ARE TO BE REMOVED AND SALVAGED. STAGE IN ON SITE LOCATION AS SPECIFIED BY OWNER.
- ALL DEPRESSIONS CREATED BY DEMOLITION PROCEDURES SHALL BE BACKFILLED WITH CLASS II FILL MATERIAL, IN 8" LIFTS COMPACTED TO 95% OF MAXIMUM UNIT WEIGHT, UP TO PROPOSED SUBGRADE.
- CONTRACTOR IS RESPONSIBLE FOR DOING AN EARTHWORK CALCULATION FOR CUT AND FILL REQUIREMENTS, AND IS RESPONSIBLE FOR INCLUDING IMPORT AND EXPORT OF MATERIALS IN THEIR BID. ALL EXCESS MATERIAL (INCLUDING TOPSOIL, CLEAN FILL, AND WASTE MATERIAL) SHALL BE REMOVED FROM THE SITE.
- CONTRACTOR TO PROTECT EXISTING WALKS, PAVEMENT, CURBS, GUTTERS, WALLS, FENCES, GATES, LANDSCAPING AND TREES TO REMAIN DURING CONSTRUCTION.



**SPALDING
DeDECKER**
Engineering and Surveying
Excellence Since 1954


905 South Blvd. East
Rochester Hills, MI 48307
Phone (248) 844-5400
Fax (248) 844-5404

15 E. Baltimore St.
Detroit, MI 48202
Phone (313) 305-9120
Fax (313) 305-9121

27333 Meadowbrook Rd., Suite 210
Novi, MI 48377
Phone (248) 844-6274

400 Ann St. NW, Suite 204
Grand Rapids, MI 49504
Phone (616) 885-5802

www.sda-eng.com
(800) 598-1600



**Know what's below.
Call before you dig.**

PRIOR TO CONSTRUCTION, ALL LOCATIONS AND DEPTHS OF EXISTING UTILITIES (IN CONFLICT WITH PROPOSED IMPROVEMENTS) SHALL BE VERIFIED IN THE FIELD. CALL MISS DIG 3 WORKING DAYS PRIOR TO CONSTRUCTION.

UTILITY NOTE

UTILITY INFORMATION ON THIS DRAWING MAY BE FROM INFORMATION DISCLOSED TO THIS FIRM BY THE VARIOUS UTILITY COMPANIES, CITY/COUNTY AGENCIES AND OTHER VARIOUS SOURCES. UNDERGROUND UTILITIES WHICH ARE ON PRIVATE PROPERTY ARE USUALLY NOT DELINEATED UPON A UTILITY COMPANY'S PUBLISHED PLANS. THEIR LOCATION, IF SHOWN UPON THIS SURVEY, ARE APPROXIMATED FROM FOUND PAINT MARKSTAKES, ETC. AS LOCATED BY THIS FIRM FROM SOURCES WHICH ARE UNKNOWN. NO GUARANTEE IS GIVEN AS TO THE COMPLETENESS OR ACCURACY THEREOF.

COPYRIGHT © 2023 SPALDING DEDecker ASSOCIATES, INC.
THIS DRAWING AND THE SUBJECT MATTER CONTAINED THEREON IS PROPRIETARY AND IS NOT TO BE USED OR REPRODUCED WITHOUT WRITTEN PERMISSION OF SPALDING DEDecker ASSOCIATES, INC.

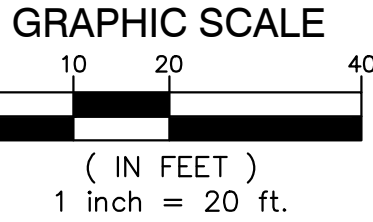
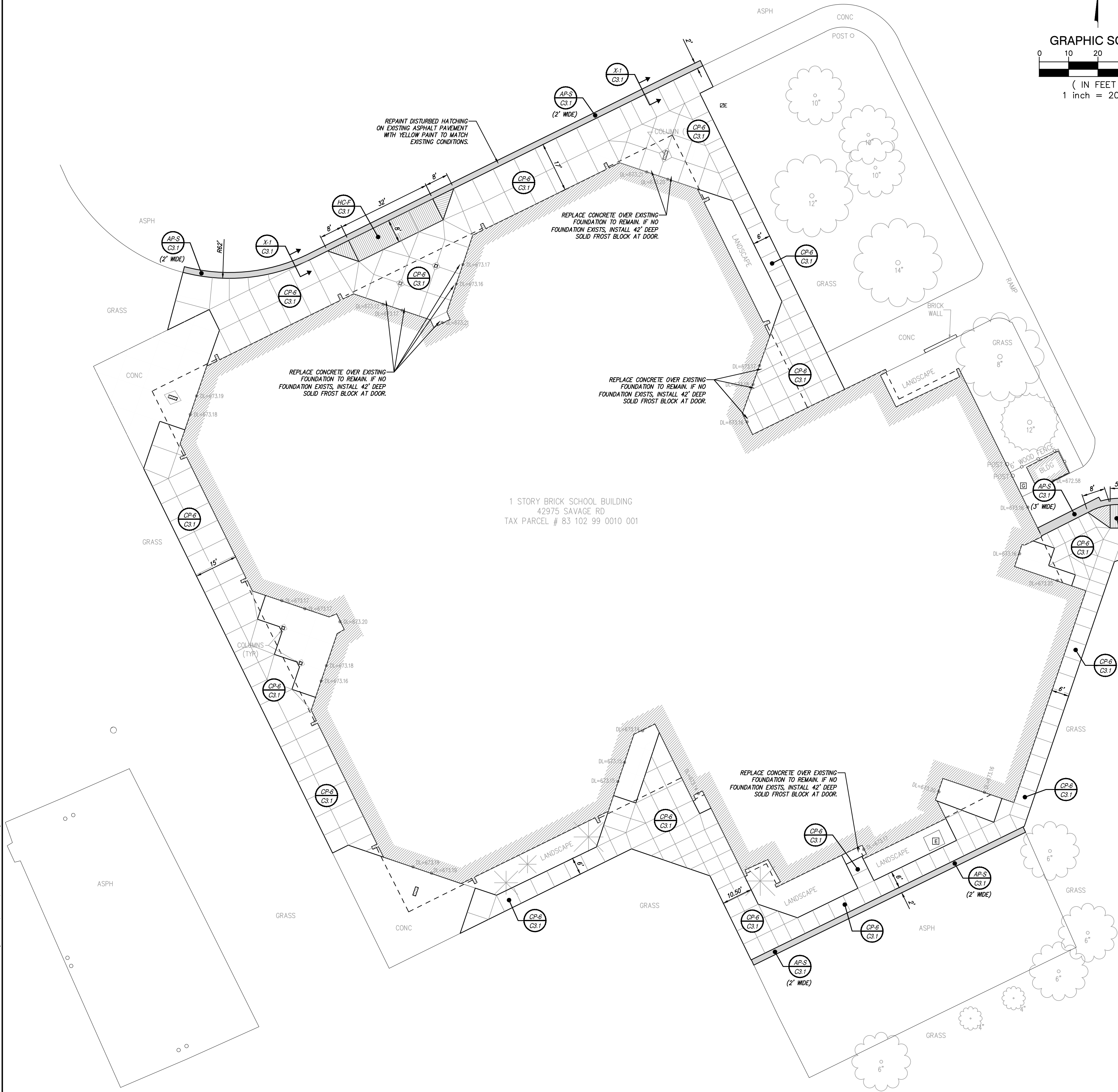
VAN BUREN PUBLIC SCHOOLS SAVAGE ELEMENTARY CONCRETE IMPROVEMENTS

DEMOLITION PLAN

SECTION 26
TOWN 03 SOUTH RANGE 08 EAST
VAN BUREN TOWNSHIP
WAYNE COUNTY, MICHIGAN

NO.	DATE	REVISION
1	03-17-23	OWNER REVIEW
2	03-31-23	BIDS

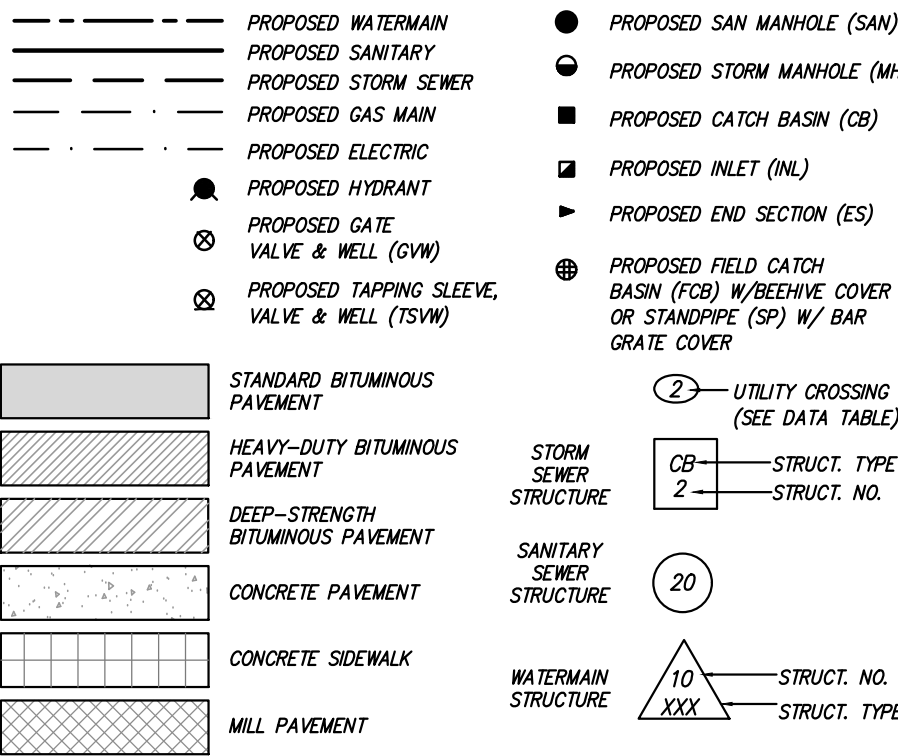
VERIFY SCALES	
BAR IS ONE INCH ON ORIGINAL DRAWING IF NOT ONE INCH ON THIS SHEET, ADJUST SCALES ACCORDINGLY	
DRAWN BY C. YANG	DATE 02-14-23
DESIGNED BY J. ENSLEY	DATE 02-14-23
CHECKED BY J. ENSLEY	DATE
PROJECT MANAGER T. SOVEL	BID PLAN DATE
DEPARTMENT MANAGER APPROVAL T. SOVEL	DATE
JOB NO. NP22155	DRAWING NO. NP22155DEM
SCALE: 1" = 20'	SHEET NO. C2.1



PAVING CONSTRUCTION NOTES

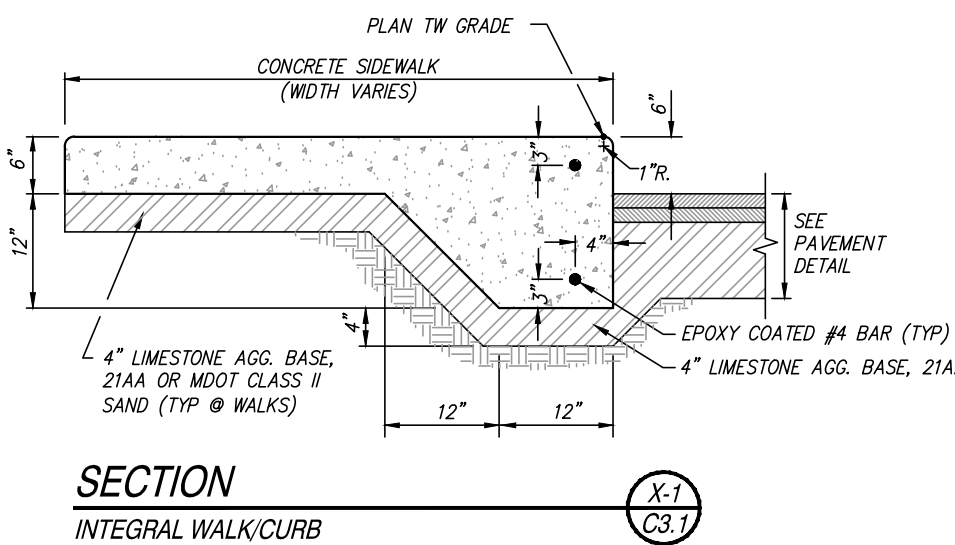
1. EARTHWORK AND PAVEMENT CONSTRUCTION SHALL BE PERFORMED IN ACCORDANCE WITH THE CURRENT MDOT STANDARD SPECIFICATIONS FOR CONSTRUCTION UNLESS OTHERWISE NOTED IN THE FOLLOWING ITEMS.
2. REMOVE ANY EXISTING TOPSOIL, VEGETATION, TREES AND OTHER DELETERIOUS MATERIALS TO EXPOSE THE SUBGRADE SOIL. TREE ROOTS SHALL BE COMPLETELY REMOVED.
3. EXCAVATE TO THE DEPTH OF THE FINAL SUBGRADE ELEVATION TO ALLOW FOR GRADE CHANGES AND THE PLACEMENT OF THE RECOMMENDED PAVEMENT SYSTEM.
4. THE TOP 12 INCHES OF THE EXPOSED SUBGRADE SHALL BE COMPACTED TO A DENSITY NO LESS THAN 95 PERCENT OF THE MAXIMUM DENSITY AS DETERMINED BY THE MODIFIED PROCTOR (ASTM D 1557-91).
5. THE FINAL SUBGRADE SHALL BE THOROUGHLY PROCTORED UNDER THE OBSERVATION OF A GEOTECHNICAL/PAVEMENT ENGINEER. LOOSE OR WELDING AREAS WHICH CANNOT BE MECHANICALLY STABILIZED SHALL BE REMOVED AND REPLACED WITH ENGINEERED FILL OR AS DICTATED BY FIELD CONDITIONS.
6. THE AGGREGATE BASE SHALL BE COMPACTED TO A DENSITY NO LESS THAN 95 PERCENT OF THE MAXIMUM DENSITY AS DETERMINED BY THE MODIFIED PROCTOR (ASTM D 1557-91). THE BASE SHALL EXTEND A MINIMUM OF 1 FOOT BEYOND THE PAVED EDGE.
7. ALL BITUMINOUS MATERIAL SHALL BE COMPACTED TO A DENSITY NO LESS THAN 97 PERCENT OF THE MAXIMUM DENSITY AS DETERMINED BY THE MARSHALL METHOD.
8. A BOND COAT OF SS-1H EMULSION IS REQUIRED BETWEEN THE LEVELING COURSE AND THE WEARING COURSE WHEN EITHER 24 HOURS HAVE ELAPSED BETWEEN PLACEMENT OF THE BITUMINOUS COURSES OR THE SURFACE OF THE PAVEMENT HAS BEEN CONTAMINATED WITH DIRT, DUST, OR FOREIGN MATERIAL. THE BOND COAT SHALL BE APPLIED IN A UNIFORM MANNER OVER THE SURFACE AT A RATE OF 0.1 GALLONS/S.Y. IN THE EVENT A BOND COAT IS NOT REQUIRED, THE LEVELING COURSE MAY REQUIRE LOCALIZED BROOM CLEANING.
9. PERFORMANCE GRADE PG64-22 ASPHALT CEMENT SHALL BE USED IN THE PRODUCTION OF ALL BITUMINOUS MIXTURES. RECLAIMED ASPHALT PAVEMENT (RAP) SHALL BE ALLOWED ONLY AS SPECIFIED BY THE CURRENT MDOT STANDARD SPECIFICATIONS FOR CONSTRUCTION, UNLESS NOTED ON THE PROJECT DETAILS.
10. CONSTRUCTION TRAFFIC SHALL BE MINIMIZED ON THE NEW PAVEMENT. IF CONSTRUCTION TRAFFIC IS ANTICIPATED ON THE PAVEMENT STRUCTURE, THE PLACEMENT OF THE FINAL LIFT SHALL BE DELAYED UNTIL THE MAJORITY OF THE CONSTRUCTION ACTIVITIES HAVE BEEN COMPLETED. THIS ACTION WILL ALLOW REPAIR OF LOCALIZED FAILURE, IF ANY DOES OCCUR, AS WELL AS REDUCE LOAD DAMAGE ON THE PAVEMENT SYSTEM. THE CONTRACTOR IS RESPONSIBLE FOR REPAIR TO ANY DAMAGED SECTION RESULTING FROM CONSTRUCTION ACTIVITY.
11. CONTRACTOR SHALL PROTECT EXISTING CURB, GUTTER, SIDEWALK, WALLS, FENCES AND ALL OTHER EXISTING SITE FEATURES NOT INDICATED FOR REMOVAL OR REHABILITATION.
12. PLACE EXPANSION JOINTS WHERE NEW CONCRETE PAVEMENT OR WALKS ADJUT BUILDING WALLS (PROPOSED OR EXISTING), CURB, OR EXISTING CONCRETE PAVEMENT. PLACE JOINT SEALANT ON ALL EXPANSION JOINTS.
13. CONTRACTOR TO CONSTRUCT CONTRACTION AND EXPANSION JOINTS IN ALL NEW CONCRETE PAVEMENT. CONTRACTION JOINTS SHALL BE TOGGED WHERE SIDEWALK WIDTH IS 8' OR LESS, AND SHALL BE SPACED EQUAL TO THE WIDTH OF THE PAVEMENT (I.E. 8' SPACING FOR 8' WIDE WALK), BUT NOT MORE THAN 10' APART. PLACE EXPANSION JOINTS WITH JOINT SEALANT AT MAXIMUM 50' SPACING. CONTRACTOR SHALL GENERALLY MATCH THE JOINT PATTERNS FOR CONCRETE PAVEMENT WHEN SHOWN ON THE PLANS.
14. CONCRETE PAVEMENT SHALL MEET THE REQUIREMENTS FOR MDOT GRADE 4000 CONCRETE PER THE CURRENT MDOT STANDARD SPECIFICATIONS FOR CONSTRUCTION.
15. WHERE REPLACING INTEGRAL CURB/WALK, PAINT CURB FACE AND 6" OF TOP OF CURB WITH YELLOW PAINT TO MATCH EXISTING CONDITIONS.

LEGEND



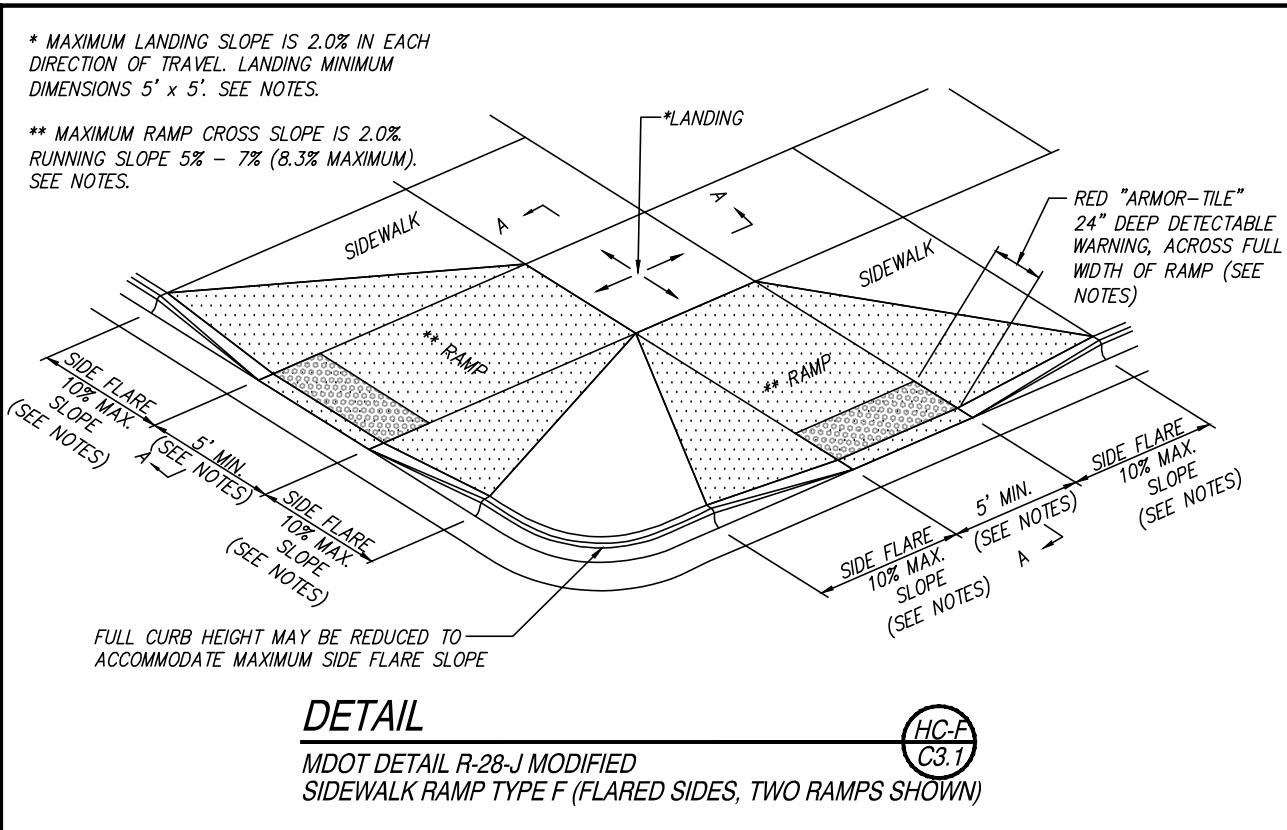
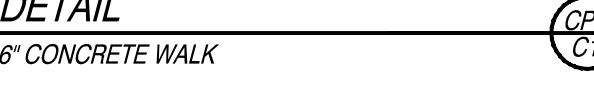
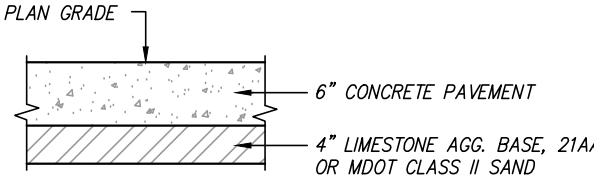
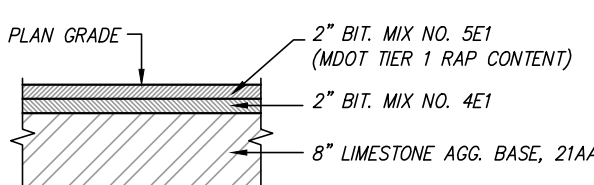
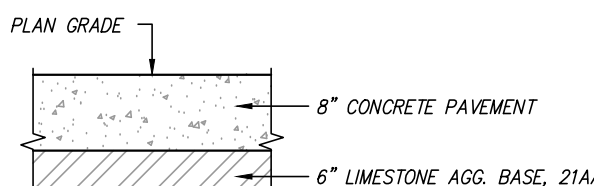
SIDEWALK RAMP NOTES (MDOT DETAIL R-28-J MODIFIED)

1. DETAILS SPECIFIED ON THIS PLAN APPLY TO ALL CONSTRUCTION, RECONSTRUCTION, OR ALTERATION OF STREETS, CURBS, OR SIDEWALKS BY ALL PUBLIC AGENCIES AND BY ALL PRIVATE ORGANIZATIONS CONSTRUCTING FACILITIES FOR PUBLIC USE.
2. SURFACE TEXTURE OF THE RAMP SHALL BE THAT OBTAINED BY A COARSE BROOMING, TRANSVERSE TO THE RUNNING SLOPE.
3. CARE SHALL BE TAKEN TO ASSURE A UNIFORM GRADE ON THE RAMP. WHERE CONDITIONS PERMIT, IT IS DESIRABLE THAT THE SLOPE OF THE RAMP BE IN ONLY ONE DIRECTION, PARALLEL TO THE DIRECTION OF TRAVEL.
4. PROVIDE TURNING SPACES WHERE PEDESTRIAN TURNING MOVEMENTS ARE REQUIRED.
5. CURB RAMP WITH RUNNING SLOPE EQUAL TO OR LESS THAN 5% DO NOT REQUIRE A TOP LANDING. HOWEVER, ANY CONTINUOUS SIDEWALK OR PEDESTRIAN ROUTE CROSSING THROUGH OR INTERSECTING THE CURB RAMP MUST INDEPENDENTLY MAINTAIN A CROSS SLOPE NOT GREATER THAN 2% PERPENDICULAR TO ITS OWN DIRECTION(S) OF TRAVEL.
6. DETECTABLE WARNING SURFACE COVERAGE IS 24" MINIMUM IN THE DIRECTION OF RAMP/PATH TRAVEL AND THE FULL WIDTH OF THE RAMP/PATH OPENING EXCLUDING CURBED OR FLARED CURB TRANSITION AREAS. A BORDER OFFSET NOT GREATER THAN 2" MEASURED ALONG THE EDGES OF THE DETECTABLE WARNING IS ALLOWABLE. FOR RADIAL CURB THE OFFSET IS MEASURED FROM THE ENDS OF THE RADII.
7. THE MAXIMUM RUNNING SLOPE OF 8.3% IS RELATIVE TO A FLAT (0%) REFERENCE. HOWEVER, IT SHALL NOT REQUIRE ANY RAMP OR SERIES OF RAMP TO EXCEED 15 FEET IN LENGTH INCLUDING LANDINGS OR TRANSITIONS.
8. THE TOP OF THE JOINT FILLER FOR ALL RAMP TYPES SHALL BE FLUSH WITH THE ADJACENT CONCRETE.
9. FLARED SIDES WITH A SLOPE OF 10% MAXIMUM, MEASURED ALONG THE ROADSIDE CURB LINE, SHALL BE PROVIDED WHERE AN UNOBSTRUCTED CIRCULATION PATH LATERALLY CROSSES THE SIDEWALK RAMP. FLARED SIDES ARE NOT REQUIRED WHERE THE RAMP IS BORDERED BY LANDSCAPING, UNPAVED SURFACE OR PERMANENT FIXED OBJECTS. WHERE THEY ARE NOT REQUIRED, FLARED SIDES CAN BE CONSIDERED IN ORDER TO AVOID SHARP CURB RETURNS AT RAMP CHANGES.
10. DETECTABLE WARNING PLATES MUST BE INSTALLED USING FABRICATED OR FIELD CUT UNITS CAST AND/OR ANCHORED IN THE PAVEMENT TO RESIST SHIFTING OR HEAVING. DETECTABLE WARNING PLATES TO BE RED CAST-IN-PLACE "ARMOR-TILE", OR APPROVED EQUAL, IN ACCORDANCE WITH ANS I SECTIONS 406.13 AND 705, AND ADA CODE OF REGULATION 4A.29.



SECTION

INTEGRAL WALK/CURB



SPALDING DeDECKER
Engineering and Surveying
Excellence Since 1954

905 South Blvd. East
Rochester Hills, MI 48307
Phone (248) 844-5400
Fax (248) 844-5404

15 E. Baltimore St.
Detroit, MI 48202
Phone (313) 305-9120
Fax (313) 305-9121

27333 Meadowbrook Rd., Suite 210
Novi, MI 48377
Phone (248) 844-6274

400 Ann St. NW, Suite 204
Grand Rapids, MI 49504
Phone (616) 885-5802

www.sda-eng.com
(800) 598-1600

811
Know what's below.
Call before you dig.

PRIOR TO CONSTRUCTION, ALL LOCATIONS AND DEPTHS OF EXISTING UTILITIES (IN CONFLICT WITH PROPOSED IMPROVEMENTS) SHALL BE VERIFIED IN THE FIELD. CALL MISS DIG 3 WORKING DAYS PRIOR TO CONSTRUCTION.

UTILITY NOTE

UTILITY INFORMATION ON THIS DRAWING MAY BE FROM INFORMATION DISCLOSED TO THIS FIRM BY THE VARIOUS UTILITY COMPANIES, CITY/COUNTY AGENCIES AND OTHER VARIOUS SOURCES. UNDERGROUND UTILITIES WHICH ARE ON PRIVATE PROPERTY ARE USUALLY NOT DELINEATED UPON A UTILITY COMPANY'S PUBLISHED PLANS. THEIR LOCATION, IF SHOWN UPON THIS SURVEY, ARE APPROXIMATED FROM FOUND PAINT MARKERS, ETC. AS LOCATED BY THIS FIRM FROM SOURCES WHICH ARE UNKNOWN. NO GUARANTEE IS GIVEN AS TO THE COMPLETENESS OR ACCURACY THEREOF.

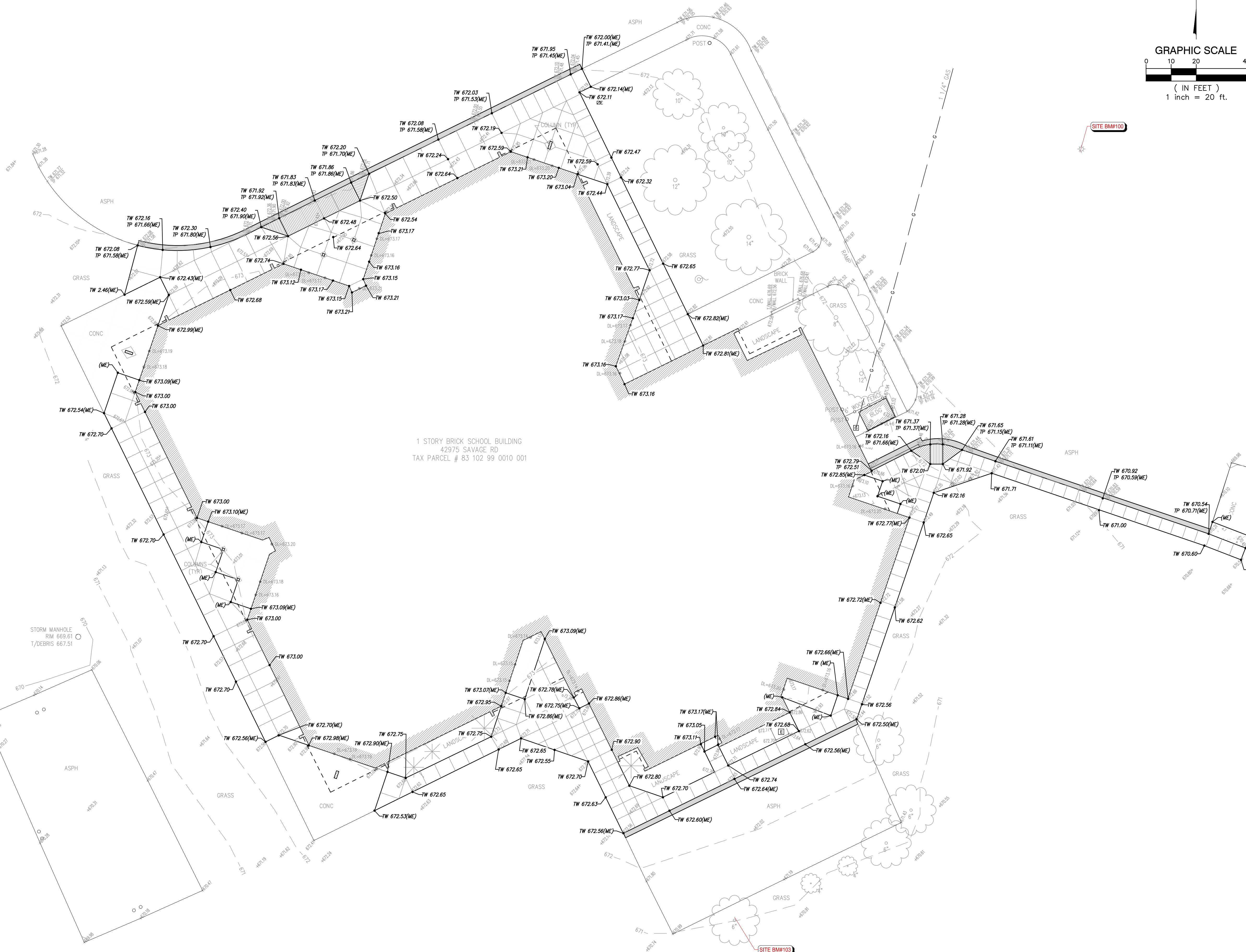
COPYRIGHT © 2023 SPALDING DEDICKER ASSOCIATES, INC. THIS DRAWING AND THE SUBJECT MATTER CONTAINED THEREON IS PROPRIETARY AND IS NOT TO BE USED OR REPRODUCED WITHOUT WRITTEN PERMISSION OF SPALDING DEDICKER ASSOCIATES, INC.

VAN BUREN PUBLIC SCHOOLS
SAVAGE ELEMENTARY
CONCRETE IMPROVEMENTS

PAVING AND LAYOUT PLAN

SECTION 26		
TOWN 03 SOUTH RANGE 08 EAST		
VAN BUREN TOWNSHIP		
WAYNE COUNTY, MICHIGAN		
NO.	DATE	REVISION
1	03-17-23	OWNER REVIEW
2	03-31-23	BIDS
VERIFY SCALES		
BAR IS ONE INCH ON ORIGINAL DRAWING		
IF NOT ONE INCH ON THIS SHEET, ADJUST SCALES ACCORDINGLY		
DRAWN BY	C. YANG	DATE 02-14-23
DESIGNER	J. ENSLEY	DATE 02-14-23
CHECKED	J. ENSLEY	DATE
PROJECT MANAGER	T. SOVEL	BID PLAN DATE
DEPARTMENT MANAGER APPROVAL	T. SOVEL	DATE
JOB NO.	NP22155	DRAWING NO. NP22155PAV
SCALE:	1" = 20'	SHEET NO. C3.1

Plotted: Mar 30, 2023, 9:55 AM by user: 1006 - Saved: 3/29/2023 by user: 791
N: NP\NLD Projects\NP22155 - Savage ES\DWG\NP22155GRP.dwg



LEGEND

--- PROPOSED WATERMAIN	● PROPOSED SAN MANHOLE (SAN)
--- PROPOSED SANITARY	● PROPOSED STORM MANHOLE (MH)
--- PROPOSED STORM SEWER	■ PROPOSED CATCH BASIN (CB)
--- PROPOSED GAS MAIN	■ PROPOSED INLET (INL)
--- PROPOSED ELECTRIC	▶ PROPOSED END SECTION (ES)
● PROPOSED HYDRANT	⊕ PROPOSED FIELD CATCH BASIN (FCB) W/BEEHIVE COVER OR STANDPIPE (SP) W/ BAR GRATE COVER
⊗ PROPOSED GATE VALVE & WELL (GVW)	② UTILITY CROSSING (SEE DATA TABLE)
⊗ PROPOSED TAPPING SLEEVE, VALVE & WELL (TSVW)	CB 2 STRUCT. TYPE 2 STRUCT. NO.
STANDARD BITUMINOUS PAVEMENT	20 STRUCT. NO. XXX STRUCT. TYPE
HEAVY-DUTY BITUMINOUS PAVEMENT	
DEEP-STRENGTH BITUMINOUS PAVEMENT	
CONCRETE PAVEMENT	
CONCRETE SIDEWALK	
MILL PAVEMENT	

GRADING LEGEND

1000.00	EXISTING ELEVATION
• TC 000.00	PROPOSED TOP OF CURB ELEVATION
• G 000.00	PROPOSED GUTTER ELEVATION
• OS 000.00	OUTSIDE GRADE ELEVATION
11.30	EXISTING CONTOURS
11.30	PROPOSED CONTOURS
• TP 000.00	TOP OF PAVEMENT ELEVATION
• TW 000.00	TOP OF WALK ELEVATION
• FG 000.00	FINISH GRADE ELEVATION
• T/WALL 000.00	TOP OF WALL ELEVATION
• ME 000.00	MATCH EXISTING ELEVATION
→	FLOW ARROW

GRADING NOTES

- CONTRACTOR TO PLACE ALL NEW PAVEMENT TO THE GRADES INDICATED, OR MATCH ORIGINAL GRADES IF NEW GRADES ARE NOT SHOWN. CONTRACTOR SHALL CONFIRM MINIMUM 1% PAVEMENT SLOPES ARE ATTAINED IN ALL AREAS.
- PROPOSED GRADES MAY BE BASED ON AN INTERPOLATION OF DATA SHOWN ON THE TOPOGRAPHIC SURVEY. THIS INTERPOLATED DATA IS APPROXIMATE AND COULD DIFFER SLIGHTLY BASED ON THE ACCURACY OF THE SURVEY. CONTRACTOR SHALL CONFIRM THAT THE PROPOSED GRADES SHOWN ON THIS PLAN WILL NOT CREATE A STANDING WATER CONDITION (I.E. A LOW SPOT OR PAVEMENT SLOPES LESS THAN 1%) OR AN UNSAFE CONDITION WITH SLOPES IN EXCESS OF 5%. CONTRACTOR SHALL NOTIFY ENGINEER IMMEDIATELY IF THEY BELIEVE THAT ONE OF THESE SITUATIONS WILL OCCUR BASED ON THE PROPOSED GRADES.
- ALL HANDICAP RAMPS AND ADA ACCESSIBLE ROUTES SHALL BE CONSTRUCTED IN ACCORDANCE WITH THE CURRENT VERSION OF MDT DETAIL R-28 "SIDEWALK RAMP AND DETECTABLE WARNING DETAILS".
- CONTRACTOR IS RESPONSIBLE FOR CONTROLLING STORM WATER RUNOFF DURING CONSTRUCTION OPERATIONS. OF PARTICULAR CONCERN WILL BE THE TIME PERIOD AFTER THE SITE HAS BEEN STRIPPED AND NOT YET RESTORED, BUILT UPON, OR PAVED. CONTRACTOR MUST INSTALL OR CONSTRUCT APPROPRIATE TEMPORARY MEASURES TO PROTECT ADJACENT PROPERTIES.

RESTORATION NOTE

RESTORE ALL DISTURBED NON-PAVED LAWN AREAS WITH 3" OF CLEAN TOPSOIL AND SEED MIX (30% KENTUCKY BLUEGRASS, 30% PERENNIAL RYEGRASS, 30% CREeping RED FESCUE). PLACE MULCH IN ALL SEEDD AREAS. ON SLOPES IN EXCESS OF 10 HORIZONTAL TO 1 VERTICAL PLACE NORTH AMERICAN GREEN D5150 MULCH BLANKET IMMEDIATELY AFTER SEEDING. USE METAL STAPLES PER MANUFACTURERS RECOMMENDATIONS TO HOLD MATING IN PLACE.

LAWN RE-GRADING

WHERE SIDEWALK REPLACEMENT IS ADJACENT TO LAWN, RE-GRADE AND RESTORE LAWN AS NECESSARY TO BLEND GRADES AND PROVIDE POSITIVE DRAINAGE. CONTRACTOR TO FIELD VERIFY LIMITS.

SPALDING DeDECKER
Engineering and Surveying
Excellence Since 1954

905 South Blvd. East
Rochester Hills, MI 48307
Phone (248) 844-5400
Fax (248) 844-5404

15 E. Baltimore St.
Detroit, MI 48202
Phone (313) 305-9120
Fax (313) 305-9121

27333 Meadowbrook Rd., Suite 210
Novi, MI 48377
Phone (248) 844-6274

400 Ann St. NW, Suite 204
Grand Rapids, MI 49504
Phone (616) 885-5802

www.sda-eng.com
(800) 598-1600

811
Know what's below.
Call before you dig.

PRIOR TO CONSTRUCTION, ALL LOCATIONS AND DEPTHS OF EXISTING UTILITIES (IN CONFLICT WITH PROPOSED IMPROVEMENTS) SHALL BE VERIFIED IN THE FIELD. CALL MISS DIG 3 WORKING DAYS PRIOR TO CONSTRUCTION.

UTILITY NOTE

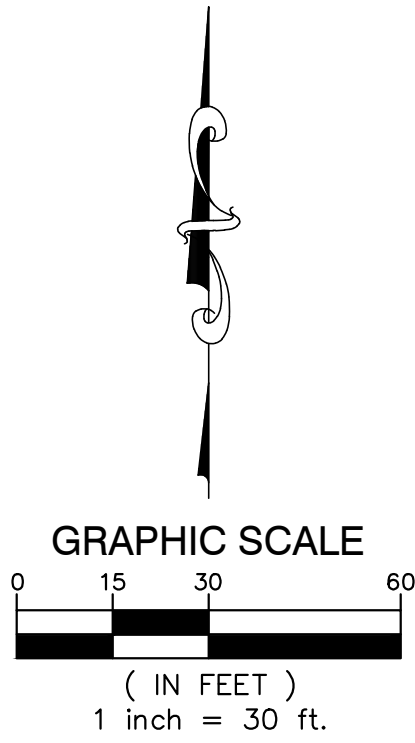
UTILITY INFORMATION ON THIS DRAWING MAY BE FROM INFORMATION DISCLOSED TO THIS FIRM BY THE VARIOUS UTILITY COMPANIES, CITY/COUNTY AGENCIES AND OTHER VARIOUS SOURCES. UNDERGROUND UTILITIES WHICH ARE ON PRIVATE PROPERTY ARE USUALLY NOT DELINEATED UPON A UTILITY COMPANYS PUBLISHED PLANS. THEIR LOCATION, IF SHOWN UPON THIS SURVEY, ARE APPROXIMATED FROM FOUND PAINT MARKSTAKES, ETC. AS LOCATED BY THIS FIRM FROM SOURCES WHICH ARE UNKNOWN. NO GUARANTEE IS GIVEN AS TO THE COMPLETENESS OR ACCURACY THEREOF.

COPYRIGHT © 2023 SPALDING DEDecker ASSOCIATES, INC. THIS DRAWING AND THE SUBJECT MATTER CONTAINED THEREON IS PROPRIETARY AND IS NOT TO BE USED OR REPRODUCED WITHOUT WRITTEN PERMISSION OF SPALDING DEDecker ASSOCIATES, INC.

**VAN BUREN PUBLIC SCHOOLS
SAVAGE ELEMENTARY
CONCRETE IMPROVEMENTS**

GRADING PLAN			
SECTION 26			
TOWN 03 SOUTH RANGE 08 EAST			
VAN BUREN TOWNSHIP			
WAYNE COUNTY, MICHIGAN			
NO.	DATE	REVISION	
1	03-17-23	OWNER REVIEW	
2	03-31-23	BIDS	

Plotted: Mar 30, 2023, 10:0 AM by user: 1006 — Saved: 3/17/2023 by user: 1006
N:\NP\ND Projects\NP22155 — Savage ES\DWG\NP22155SEC.dwg



SOIL EROSION CONTROL DEVICES

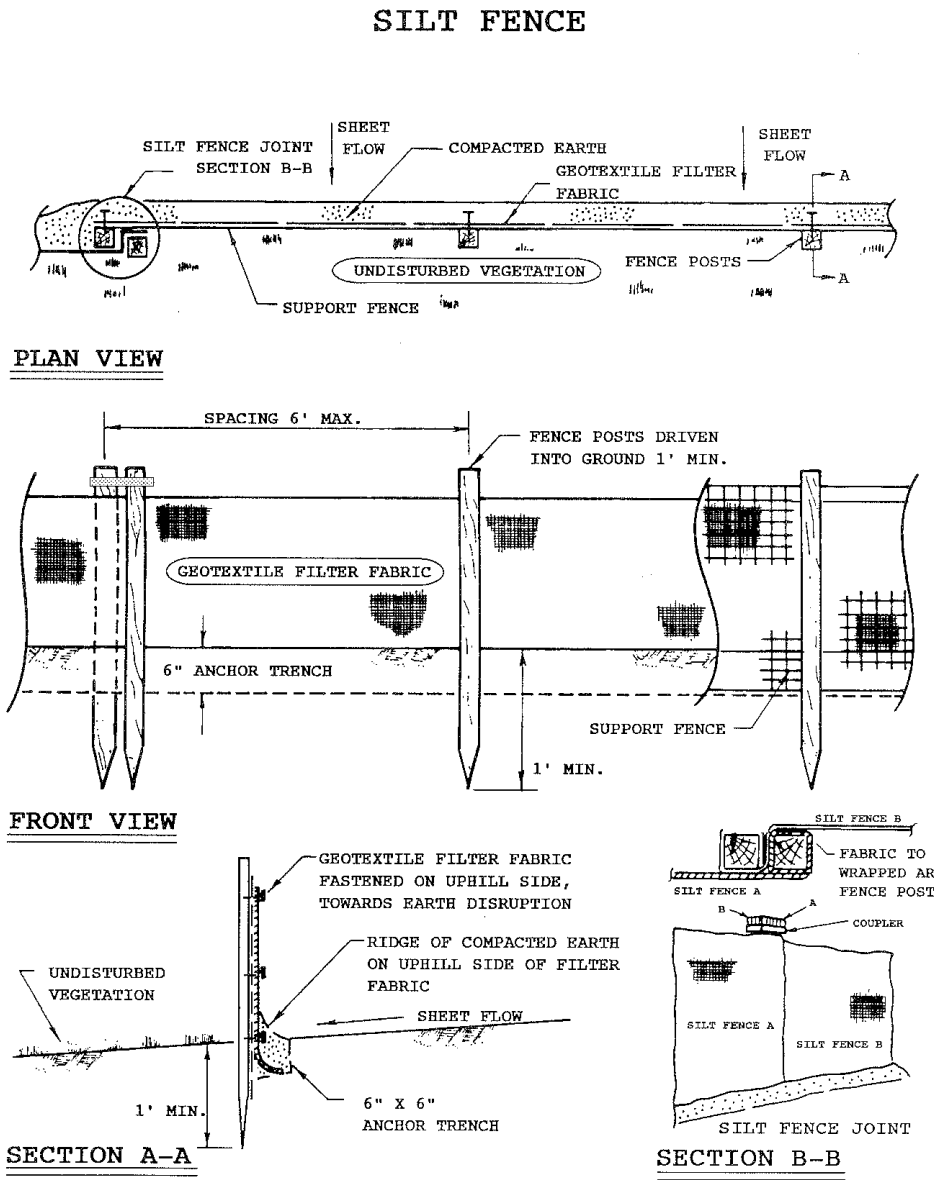
⊘ CATCH BASIN FILTER BAG
(SILT SACK OR EQUIVALENT)

--- 24" SILT FENCE

SITE NOTES:
APPROX. GROSS ACREAGE DISTURBED = 0.778± ACRES
DISTANCE TO NEAREST BODY OF WATER = 740± LF (BUNTON DRAIN)
THEREFORE, A SOIL EROSION PERMIT IS NOT REQUIRED.

SOIL TYPES:
BnB - BOYER LOAMY SAND, 0 TO 6 PERCENT SLOPES
WaA - WASEPI LOAMY SAND, 0 TO 2 PERCENT SLOPES

THIS PROJECT SHALL BE CONSTRUCTED IN COMPLIANCE WITH PART 91 OF ACT 451 OF 1994, AS AMENDED. THE SOIL EROSION AND SEDIMENT CONTROL ACT.



P Price and Company, Inc. **SILTSACK**
Trademark owned by ACF Environmental

PROTECT CATCH BASINS FROM SEDIMENT & TRASH

SILTSACK WORKS!

- EASY TO INSTALL - EASY TO MAINTAIN
- ECONOMICAL
- FABRICATED TO FIT ANY SIZE OR SHAPE
- PERMEABILITY OF 200 GPM/SF (Hi-Flow style)
- REPLACES ALL ROCK OR GEOTEXTILES
- REUSABLE

SILTSACK traps sand, debris and most silt particles before they reach the sump or pipes. Costly basin and pipe system cleaning are reduced. With SILTSACK, maintenance is easy and site flooding is just a memory. Best of all, SILTSACK can be reused!

Trademark of Price and Company, Inc.

SPALDING DeDECKER
Engineering and Surveying
Excellence Since 1954

905 South Blvd. East
Rochester Hills, MI 48307
Phone (248) 844-5400
Fax (248) 844-5404

15 E. Baltimore St.
Detroit, MI 48202
Phone (313) 305-9120
Fax (313) 305-9121

27333 Meadowbrook Rd., Suite 210
Novi, MI 48377
Phone (248) 844-6274

400 Ann St. NW, Suite 204
Grand Rapids, MI 49504
Phone (616) 885-5802

www.sda-eng.com
(800) 598-1600

811
Know what's below.
Call before you dig.

PRIOR TO CONSTRUCTION, ALL LOCATIONS AND DEPTHS OF EXISTING UTILITIES (IN CONFLICT WITH PROPOSED IMPROVEMENTS) SHALL BE VERIFIED IN THE FIELD. CALL MISS DIG 3 WORKING DAYS PRIOR TO CONSTRUCTION.

UTILITY NOTE

UTILITY INFORMATION ON THIS DRAWING MAY BE FROM INFORMATION DISCLOSED TO THIS FIRM BY THE VARIOUS UTILITY COMPANIES, CITY/COUNTY AGENCIES AND OTHER VARIOUS SOURCES. UNDERGROUND UTILITIES WHICH ARE ON PRIVATE PROPERTY ARE USUALLY NOT DELINEATED UPON A UTILITY COMPANY'S PUBLISHED PLANS. THEIR LOCATION, IF SHOWN UPON THIS SURVEY, ARE APPROXIMATED FROM FOUND PAINT MARKSTAKES, ETC. AS LOCATED BY THIS FIRM FROM SOURCES WHICH ARE UNKNOWN. NO GUARANTEE IS GIVEN AS TO THE COMPLETENESS OR ACCURACY THEREOF.

COPYRIGHT © 2023 SPALDING DEDecker ASSOCIATES, INC. THIS DRAWING AND THE SUBJECT MATTER CONTAINED THEREON IS PROPRIETARY AND IS NOT TO BE USED OR REPRODUCED WITHOUT WRITTEN PERMISSION OF SPALDING DEDecker ASSOCIATES, INC.

**VAN BUREN PUBLIC SCHOOLS
SAVAGE ELEMENTARY
CONCRETE IMPROVEMENTS**

**SOIL EROSION AND
SIDIMENTATION CONTROL PLAN**

SECTION 26		
TOWN 03 SOUTH RANGE 08 EAST		
VAN BUREN TOWNSHIP		
WAYNE COUNTY, MICHIGAN		
NO.	DATE	REVISION
1	03-17-23	OWNER REVIEW
2	03-31-23	BIDS

VERIFY SCALES		
BAR IS ONE INCH ON ORIGINAL DRAWING		
IF NOT ONE INCH ON THIS SHEET, ADJUST SCALES ACCORDINGLY		
DRAWER	DATE	
C. YANG	02-14-23	
DESIGNER	DATE	
J. ENSLEY	02-14-23	
CHECKED	DATE	
J. ENSLEY		
PROJECT MANAGER	BID PLAN DATE	
T. SOVEL		
DEPARTMENT MANAGER APPROVAL	DATE	
T. SOVEL		
JOB NO.	DRAWING NO.	
NP22155	NP22155SEC	
SCALE:	SHEET NO.	
1" = 30'	C5.1	