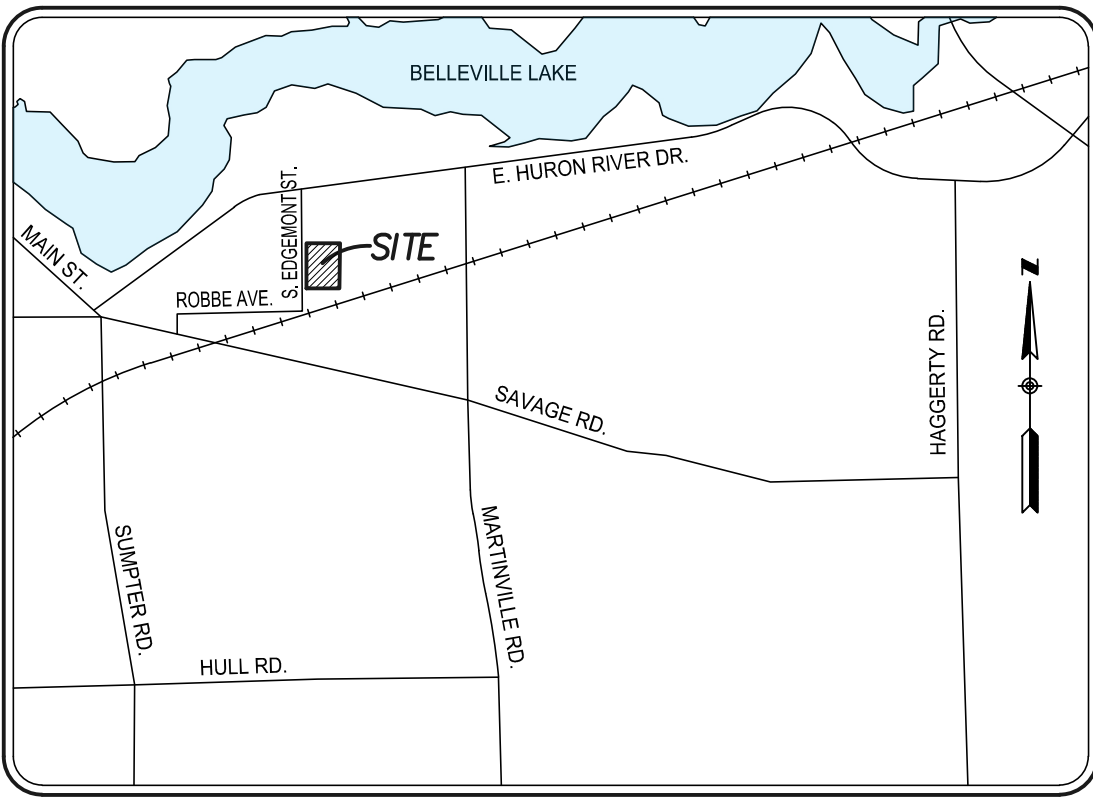


LEGEND

- MANHOLE
- CATCH BASIN
- SEWER CLEAN OUT
- GAS METER
- GAS SHUT OFF VALVE
- VALVE BOX
- GATE VALVE & WELL
- WATER SHUT OFF VALVE
- FIRE HYDRANT
- SPRINKLER VALVE BOX
- LAWN SPRINKLER HEAD
- UNVERIFIED MAPPED OBJECT
- ELECTRIC RISER OR METER
- TELEPHONE RISER
- CABLE TV RISER
- AIR CONDITION UNIT
- UTILITY POLE
- UTILITY POLE W/ LAMP EXTENSION (ARROW INDICATES DIRECTION OF ARM)
- LIGHT POLE
- LIGHT POLE WITH LAMP EXTENSION
- TRAFFIC SIGNAL
- POLE W/ TRAFFIC SIGNAL (OVER ROAD)
- GUY WIRE
- GROUND LEVEL/ DECORATIVE LIGHTING
- FLAG POLE
- METAL OR CONC. POST
- MAILBOX
- SIGN
- WATER FOUNTAIN
- PARKING METER
- BILLBOARD OR LARGE SIGN
- BASKETBALL HOOP
- BOULDER
- STATUE OR SCULPTURE
- BENCH
- BENCH
- BENCH
- PICNIC TABLE
- SOCCER GOAL
- STUMP
- DOWNSPOUT INTO STORM DRAIN
- DOWNSPOUT TO GROUND
- CONIFEROUS TREE
- DECIDUOUS TREE
- DECIDUOUS SHRUB
- CONIFEROUS SHRUB
- SECTION CORNER
- TRAVERSE POINT
- STRUCTURE NUMBER
- SDA POINT No.
- SPOT ELEVATION
- TOP OF CURB ELEVATION
- OUTLET ELEVATION
- TP TOP OF PAVEMENT ELEVATION
- EM EDGE OF METAL ELEVATION
- TW TOP OF WALK ELEVATION
- TWALL TOP OF WALL ELEVATION
- BWALL BOTTOM OF WALL ELEVATION
- GR GROUND ELEVATION
- UG UNDERGROUND
- FO FIBER OPTIC
- CONC CONCRETE
- ASPH ASPHALT
- FF FINISH FLOOR ELEVATION
- DL DOOR LEDGE ELEVATION
- BYV FOUND IRON
- F.M FOUND MONUMENT
- F.P.K FOUND P.K. NAIL
- S.I SET IRON WISDA CAP
- S.P.K SET P.K. NAIL
- S.P.K.TAG SET P.K. NAIL WISDA TAG
- MAG TAG SET MAGNETIC NAIL
- M MAGNETIC NAIL WISDA TAG
- M MEASURED
- R RECORD
- C CALCULATED
- INV. INVERT ELEVATION
- CMP CORRUGATED METAL PIPE
- G GAS
- SN SANITARY SEWER (SAN)
- ST STORM SEWER (STM)
- WM WATERMAIN (WM)
- OH OVERHEAD WIRE
- STE STEAM LINE
- O OIL LINE
- F UG FIBER (COMM.)
- E UG ELECTRIC (ELEC.)
- T UG PHONE (PH)
- C UG CABLE (CBL)
- CHAIN LINK FENCE (CL)
- WOOD FENCE
- WOODB WIRE FENCE (WW)
- GUARD RAIL
- EDGE OF BRUSHWOODS
- CENTERLINE OF DITCH
- CULVERT
- MAJOR CONTOUR
- MINOR CONTOUR
- BOUNDARY LINES
- ROW LINES
- SECTION LINES
- PROPERTY LINES
- ASPHALT
- CONCRETE
- GRAVEL/DRY MULCH
- BRICK/PAVERS
- WATER
- WATER W/ VEGETATION



LOCATION MAP

NOT TO SCALE

BENCHMARK DESCRIPTIONS

DATUM: GPS-DERIVED NAVD88

SITE BM#100	SET BENCH TIE IN EAST FACE OF 42" TREE, LOCATED ±135' SOUTH AND ±135' WEST OF THE SOUTHWEST BUILDING CORNER OF EDMONT ELEMENTARY SCHOOL.	ELEV -672.85
SITE BM#101	SET BENCH TIE IN EAST FACE OF 14" TREE, LOCATED ±130' AND ±145' WEST OF THE SOUTHWEST BUILDING CORNER OF EDMONT ELEMENTARY SCHOOL.	ELEV -673.30
SITE BM#102	SET MAG NAIL ON TOP OF SOUTH SIDE OF CONCRETE LIGHT POLE BASE, LOCATED ±270' EAST AND ±85' SOUTH OF THE INTERSECTION OF THE CENTERLINE OF GREYLOCK STREET AND S. EDMONT STREET.	ELEV -674.93

SURVEYOR'S COMMENTS

- THIS TOPOGRAPHICAL MAP IS BASED UPON A FIELD SURVEY PERFORMED BY SPALDING DEDECKER INC. DURING FEBRUARY OF 2023.
- THIS SURVEY HAS BEEN PREPARED WITHOUT THE BENEFIT OF A CURRENT TITLE SEARCH THAT WOULD IDENTIFY ANY RECORDED EASEMENTS THAT ENCUMBER THIS PROPERTY. THEREFORE, THIS PROPERTY MAY BE SUBJECT TO EASEMENTS, RIGHT-OF-WAY TAKINGS AND RESTRICTIVE COVENANTS THAT ARE NOT SHOWN.
- THE BASIS OF BEARINGS IS THE STATE PLANE GRID.
- THE COORDINATE SYSTEM FOR THIS SURVEY IS THE STATE PLANE COORDINATE SYSTEM, MICHIGAN SOUTH ZONE (2113), BASED ON NAD83. UNITS ARE INTERNATIONAL FEET. COORDINATES WERE ESTABLISHED USING A DATA LINK TO THE MDOOT CONTINUOUSLY OPERATING REFERENCE STATIONS (CORS).
- THE VERTICAL DATUM OF THIS SURVEY IS BASED UPON THE NORTH AMERICAN VERTICAL DATUM OF 1988 (NAVD88) AS ESTABLISHED WITH RTK GPS MEASUREMENTS USING A DATA LINK TO THE MDOOT CONTINUOUSLY OPERATING REFERENCE STATIONS (CORS).
- THE UTILITY INFORMATION SHOWN ON THIS SURVEY IS BASED UPON A COMBINATION OF RECORD INFORMATION AND FIELD MEASUREMENTS. A MISS DIG DESIGN TICKET NUMBER OF 20220070076 HAS BEEN REFERENCED TO THIS PROJECT AND A UTILITY PROVIDER CHART IS SHOWN ON THIS DRAWING. THERE ARE NO ASSURANCES THAT ALL PROVIDERS HAVE RESPONDED AND THE SURVEYOR DOES NOT GUARANTEE THAT ALL UNDERGROUND UTILITIES ARE SHOWN AND/OR POSITIONED PROPERLY ON THIS DRAWING DUE TO AMBIGUOUS PLANS AND RECORDS PROVIDED TO US. THE INFORMATION SHOWN ON THIS DRAWING IS INTENDED TO BE USED AS A GUIDE FOR POSSIBLE UNDERGROUND UTILITY CONFLICTS. IT IS THE RESPONSIBILITY OF OTHERS TO RESOLVE THE ACTUAL LOCATION OF ANY UNDERGROUND UTILITY THROUGH THE MISS DIG FIELD VERIFICATION SYSTEM PRIOR TO ANY SITE EXCAVATION. CALL 811 OR 800-482-7171.

LEGAL DESCRIPTION

SOURCE: BSA ONLINE

OWNER: VAN BUREN PUBLIC SCHOOLS

TAX PARCEL ID: 31-088-99-0005-000

ADDRESS: 125 S. EDMONT ST.

22R2A S2A T2A THAT PART OF THE SE 1/4 OF SEC 22 DESCRIBED AS BEGINNING AT THE SE CORNER OF HURON PARK SUB-DIVISION AS RECORDED IN L 46 OF P 38 WAYNE COUNTY RECORDS AND PROCEEDING TH DUE NORTH ALONG THE E LINE OF SAID SUBDIVISION 874.49 FT TH S 89D 58M E 485.06 FT TH DUE SOUTH 730.15 FT TH S 74D 28M 28SEC W ALONG THE NLY LINE OF THE WABASH R.R. RIGHT OF WAY 506.05 FT TO THE POB EXCEPT THE N 33 FT THEREOF ALSO EXCEPT THE W 41 FT THEREOF 7.78 ACRES

STRUCTURE TABLE

THE STRUCTURE TABLE ON THIS DRAWING IDENTIFIES THE AS-SURVEYED UNDERGROUND UTILITY MANHOLES THAT WERE FIELD MEASURED USING REASONABLE AND TRADITIONAL SURVEYING PRACTICES. PIPE SIZES, DIRECTIONS AND ELEVATIONS ARE INDICATED BY A COMBINATION OF FIELD EVIDENCE AND AVAILABLE RECORD INFORMATION. UNDERGROUND UTILITY PIPE SIZES AND CONNECTIONS ARE MANY TIMES AMBIGUOUS. SOME STRUCTURES MAY HAVE PIPES WITH UNKNOWN CONNECTIONS, SUMPS AND / OR PIPES THAT ARE FILLED WITH DEBRIS. IT WILL BE UP TO THE DESIGN ENGINEERS TO LOOK AT THE PRESENTED SURVEY RESULTS AND DECIDE IF FURTHER INVESTIGATION BY OTHER METHODS SUCH AS VACUUM CLEAN OUT, UNDERGROUND RADAR, SMOKE TESTING AND PHYSICAL EXCAVATION IS REQUIRED AS AN ADDITIONAL SERVICE.

#	TYPE	RIM	SIZE	MTRL	INVERT	DIRECTION	CONNECT
1	STORM MANHOLE	671.42	12"	CPP	668.81	NORTH	
	COULD NOT OPEN - CHAINED						
	TOP / DEBRIS	667.62	12"	CPP	668.11	WEST	2
2	ROUND CATCH BASIN	671.79	12"	CPP	667.49	EAST	1
	TOP / DEBRIS	667.39	12"	CPP	667.44	NORTH	3
3	SQUARE CATCH BASIN	671.19	12"	CPP	666.83	SOUTH	2
	TOP / WATER	665.79	12"	RCP	666.49	NORTH	4
	TOP / DEBRIS	664.19	12"	RCP	666.49	NORTH	4
4	SQUARE CATCH BASIN	670.44	12"	CPP	667.79	SE	DOWNSPOUT
	TOP / WATER	664.24	12"	RCP	666.04	SOUTH	3
	BOTTOM	663.29	12"	RCP	664.24	NW	
	TOP / WATER	664.24	12"	RCP	664.64	NE	6
5	SQUARE CATCH BASIN	669.91	8"	PVC	666.71	WEST	
	TOP / WATER	666.71	8"	PVC	665.20	SW	4
	TOP / DEBRIS	666.71	8"	PVC	667.55	SSW	
6	SQUARE CATCH BASIN	671.05	12"	RCP	665.20	NORTH	
	TOP / WATER	665.30	12"	RCP	665.20	NORTH	
	TOP / DEBRIS	662.65	12"	RCP	665.20	NORTH	

SHEET INDEX

- C1.1 - TOPOGRAPHICAL SURVEY
- C2.1 - DEMOLITION PLAN
- C3.1 - PAVING AND LAYOUT PLAN
- C4.1 - GRADING AND DRAINAGE PLAN
- C5.1 - SOIL EROSION AND SEDIMENTATION CONTROL PLAN

SURVEY NOTES

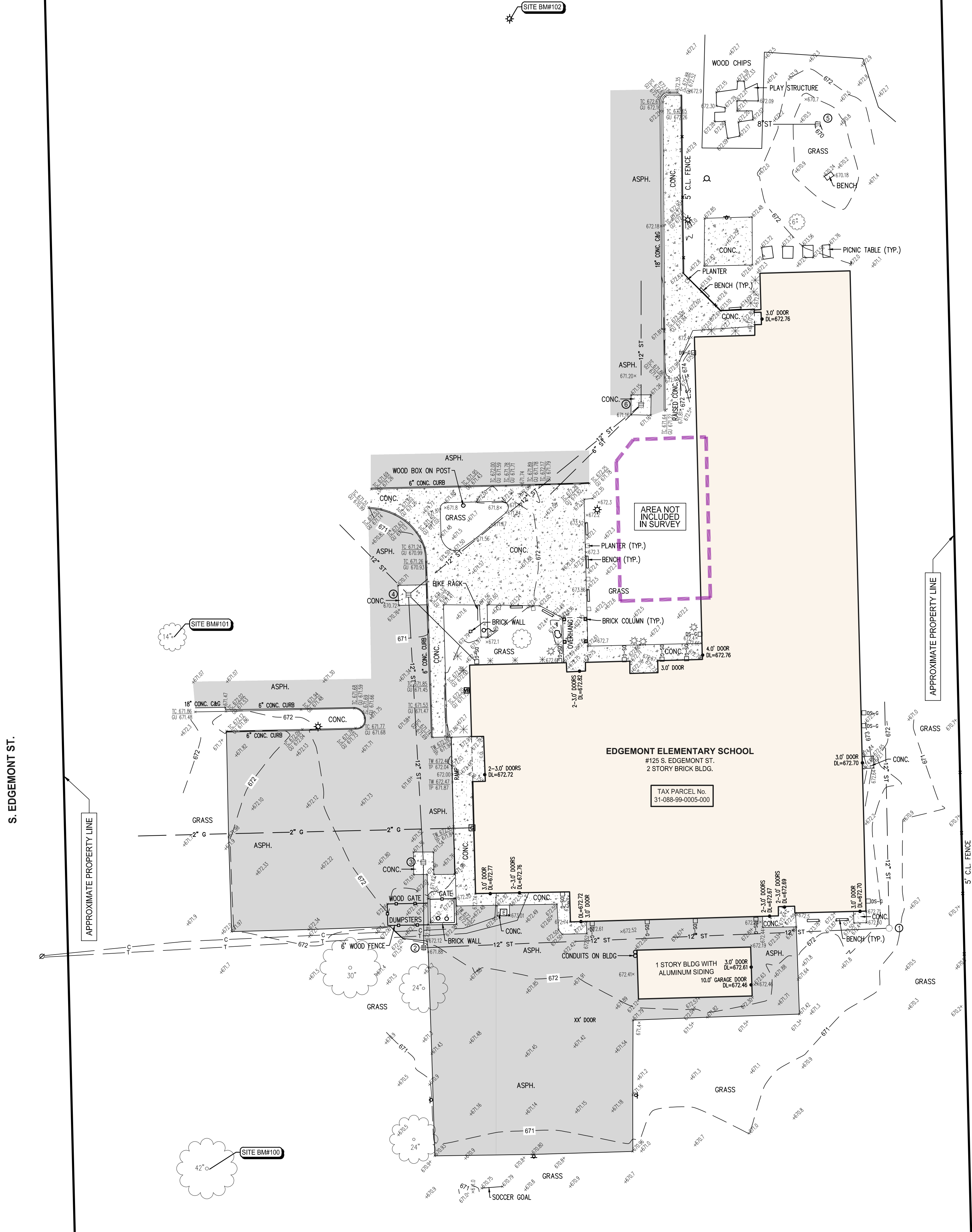
- TOPOGRAPHIC AND/OR BOUNDARY SURVEY, INCLUDING PROPERTY LINES, LEGAL DESCRIPTION, EXISTING UTILITIES, SITE TOPOGRAPHY WITH SPOT ELEVATIONS, OUTSTANDING PHYSICAL FEATURES AND EXISTING STRUCTURE LOCATIONS MAY BE BASED ON RECORD DATA NOT MEASURED IN THE FIELD.
- THE CONTRACTOR IS RESPONSIBLE FOR CONFIRMING ALL INFORMATION SHOWN ON THIS SURVEY AND NOTIFYING THE ENGINEER IMMEDIATELY OF ANY DISCREPANCIES.
- CONTRACTOR SHALL UTILIZE A PRIVATE UTILITY LOCATOR TO STAKE PUBLIC AND PRIVATE UTILITY LOCATIONS PRIOR TO CONSTRUCTION. IT IS THE CONTRACTORS RESPONSIBILITY, AT NO COST TO THE PROJECT, TO REPAIR OR REPLACE ANY DAMAGE CAUSED TO EXISTING UTILITIES.
- CONTRACTOR SHALL CONTACT MISS DIG (811) THREE WORKING DAYS PRIOR TO THE START OF CONSTRUCTION FOR STAKING OF UTILITIES.

OWNER

VAN BUREN PUBLIC SCHOOLS
555 W. COLUMBIA AVE.
BELLEVILLE, MI 48111
PHONE: (734) 697-9123
FAX: (734) 697-6385

UTILITY CHART

UTILITY PROVIDER	CONTACT #	MISS DIG RESULTS	DATE
AT&T TELEPHONE	(800) 778-9140	RECEIVED	2/13/2023
BELLEVILLE CITY ELECTRIC	(734) 697-9323	NOT RECEIVED	
BELLEVILLE CITY POTABLE WATER	(734) 697-9323	NOT RECEIVED	
BELLEVILLE CITY SANITARY SEWER	(734) 697-9323	NOT RECEIVED	
BELLEVILLE CITY SEWER (COMBINED SANI/STRM ONLY)	(734) 697-9323	NOT RECEIVED	
BELLEVILLE CITY STORM SEWER	(734) 697-9323	NOT RECEIVED	
COMCAST CABLE TV	(855) 962-8525	RECEIVED	2/7/2023
COMCAST FIBER OPTICS	(855) 962-8525	RECEIVED	2/7/2023
DOWNRIVER UTILITY WASTEWATER AUTHORITY	(734) 258-9470	RECEIVED	2/7/2023
SANITARY SEWER	(734) 407-5364	NOT RECEIVED	
DTE ENERGY (ELECTRIC) ELECTRIC	(313) 407-5364	NOT RECEIVED	
DTE ENERGY (GAS) GAS	(248) 318-7839	RECEIVED	2/8/2023
VAN BUREN TOWNSHIP SANITARY SEWER	(734) 699-8900	NOT RECEIVED	



905 South Blvd. East
Rochester Hills, MI 48307
Phone (248) 844-5400

15 E. Baltimore St.
Detroit, MI 48202
Phone (313) 305-9120

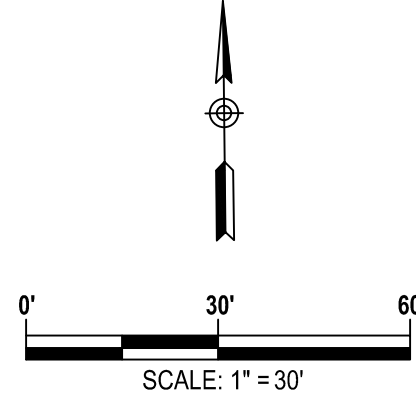
27333 Meadowbrook Rd., Suite 210
Novi, MI 48377
Phone (248) 844-6274

400 Ann St. NW, Suite 204
Grand Rapids, MI 49504
Phone (616) 885-5802

313 N. Capitol Ave., Suite 100
Lansing, MI 48933

www.sda-eng.com
(800) 598-1600

N



Know what's below.
Call before you dig.

PRIOR TO CONSTRUCTION, ALL LOCATIONS AND DEPTHS OF EXISTING UTILITIES IN CONFLICT WITH PROPOSED IMPROVEMENTS SHALL BE VERIFIED IN THE FIELD. CALL MISS DIG 3 WORKING DAYS PRIOR TO CONSTRUCTION.

UTILITY NOTE

UTILITY INFORMATION ON THIS DRAWING MAY BE FROM INFORMATION DISCLOSED TO THIS FIRM BY THE VARIOUS UTILITY COMPANIES. CITY/COUNTY AGENCIES AND OTHER VARIOUS SOURCES. UNDERGROUND UTILITIES WHICH ARE ON PRIVATE PROPERTY ARE USUALLY NOT DELINEATED UPON A UTILITY COMPANY'S PUBLISHED PLANS. THEIR LOCATION, IF SHOWN UPON THIS SURVEY, ARE APPROXIMATED FROM FOUND POINT MARKSTAKES, ETC. AS LOCATED BY THIS FIRM FROM SOURCES WHICH ARE UNKNOWN. NO GUARANTEE IS GIVEN AS TO THE COMPLETENESS OR ACCURACY THEREOF.

COPYRIGHT © 2023 SPALDING DEDDECKER ASSOCIATES, INC. THIS DRAWING AND THE SUBJECT MATTER CONTAINED THEREON IS PROPRIETARY AND IS NOT TO BE USED OR REPRODUCED WITHOUT WRITTEN PERMISSION OF SPALDING DEDDECKER ASSOCIATES, INC.

VAN BUREN PUBLIC SCHOOLS
EDGEMONT ELEMENTARY
CONCRETE IMPROVEMENTS

TOPOGRAPHICAL SURVEY

SECTION 22
TOWN 03 SOUTH RANGE 08 EAST
CITY OF BELLEVILLE
WAYNE COUNTY, MICHIGAN

NO.	DATE	REVISION
1	03-17-23	OWNER REVIEW
2	03-31-23	BIDS

VERIFY SCALES	
BAR IS ONE INCH ON ORIGINAL DRAWING	
IF NOT ONE INCH ON THIS SHEET, ADJUST SCALES ACCORDINGLY	
DRAFTER S.BROWN	DATE 02-27-23
CHECKED K.SIROIS	DATE 02-27-23
FIELD LEADER D.DUNN	PROJECT SURVEYOR D.JACKSON
PROJECT MANAGER D.JACKSON	DEPARTMENT MANAGER C.PLATZ
JOB NO. NP22156TPG	DRAWING NO. NP22156TPG-DV
SCALE: 1" = 30'	SHEET NO. C1.1

S. EDMONT ST.

APPROXIMATE PROPERTY LINE

APPROXIMATE PROPERTY LINE

EDGEMONT ELEMENTARY SCHOOL
#125 S. EDMONT ST.
2 STORY BRICK BLDG.

TAX PARCEL No.
31-088-99-0005-000

1 STORY BLDG WITH
ALUMINUM SIDING
10' GARAGE DOOR
DL=672.46

GRAPHIC SCALE
(IN FEET)
1 inch = 30 ft.

DEMOLITION NOTES

- 1 REMOVE ASPHALT PAVEMENT TO FULL DEPTH. SAWCUT FULL DEPTH WHERE NEW PAVEMENT WILL BE PLACED ADJACENT TO EXISTING PAVEMENT. EXCAVATE EXISTING AGGREGATE BASE AND SUBGRADE AS NECESSARY TO INSTALL NEW PAVEMENT SECTION AS SHOWN ON THE PAVING PLANS, INCLUDING NEW AGGREGATE BASE.
- 2 REMOVE CONCRETE PAVEMENT TO FULL DEPTH. SAWCUT FULL DEPTH TO NEAREST JOINT WHERE NEW PAVEMENT WILL BE PLACED ADJACENT TO EXISTING PAVEMENT.
- 3 PROTECT EXISTING SUPPORTED SLAB TO REMAIN.
- 4 REMOVE EXISTING SUPPORTED SLAB CAP. PROTECT EXISTING FOUNDATION TO REMAIN.
- 5 PROTECT EXISTING BRICK COLUMN TO REMAIN.
- 6 PROTECT EXISTING BENCH TO REMAIN.
- 7 PROTECT EXISTING DOWNSPOUT TO REMAIN.
- 8 PROTECT EXISTING UTILITIES AND UTILITY STRUCTURES TO REMAIN.
- 9 PROTECT EXISTING TREES AND LANDSCAPING TO REMAIN DURING CONSTRUCTION.
- 10 PROTECT EXISTING CHAIN-LINK FENCE, INCLUDING ALL GATES, POSTS, AND FOOTINGS.
- 11 REMOVE CONCRETE CURB AND GUTTER, SAWCUT FULL DEPTH TO NEAREST JOINT, WHERE SHOWN. REMOVAL LIMITS TO BE FIELD VERIFIED BY ENGINEER.
- 12 SALVAGE EXISTING PLANTER AND RE-INSTALL UPON COMPLETION.
- 13 PROTECT EXISTING GAS METER TO REMAIN.
- 14 PROTECT EXISTING CONCRETE CURB TO REMAIN.

- 15 CLEAR AND GRUB TO THE LIMITS SHOWN. INCLUDE REMOVAL OF ALL SIGNS, POSTS, FOOTINGS, GRAVEL, BRUSH, SHRUBS, GRASS, AND TREES NOT INDICATED FOR PROTECTION, INCLUDING ROOTS. STRIP TOPSOIL AND STOCKPILE ON SITE IN DESIGNATED LOCATION.

EXISTING SIGNAGE AND MAILBOXES WITHIN THE CLEARING LIMITS ARE TO BE REMOVED AND SALVAGED. STAGE IN ON SITE LOCATION AS SPECIFIED BY OWNER.

ALL DEPRESSIONS CREATED BY DEMOLITION PROCEDURES SHALL BE BACKFILLED WITH CLASS II FILL MATERIAL, IN 8" LIFTS COMPACTED TO 95% OF MAXIMUM UNIT WEIGHT, UP TO PROPOSED SUBGRADE.

CONTRACTOR IS RESPONSIBLE FOR DOING AN EARTHWORK CALCULATION FOR CUT AND FILL REQUIREMENTS, AND IS RESPONSIBLE FOR INCLUDING IMPORT AND EXPORT OF MATERIALS IN THEIR BID. ALL EXCESS MATERIAL (INCLUDING TOPSOIL, CLEAN FILL, AND WASTE MATERIAL) SHALL BE REMOVED FROM THE SITE.

CONTRACTOR TO PROTECT EXISTING WALKS, PAVEMENT, CURBS, GUTTERS, WALLS, FENCES, GATES, LANDSCAPING AND TREES TO REMAIN DURING CONSTRUCTION.

SPALDING DeDECKER
Engineering and Surveying
Excellence Since 1954

905 South Blvd. East
Rochester Hills, MI 48307
Phone (248) 844-5400
Fax (248) 844-5404

15 E. Baltimore St.
Detroit, MI 48202
Phone (313) 305-9120
Fax (313) 305-9121

27333 Meadowbrook Rd., Suite 210
Novi, MI 48377
Phone (248) 844-6274

400 Ann St. NW, Suite 204
Grand Rapids, MI 49504
Phone (616) 885-5802

www.sda-eng.com
(800) 598-1600



Know what's below.
Call before you dig.

PRIOR TO CONSTRUCTION, ALL LOCATIONS AND DEPTHS OF EXISTING UTILITIES (IN CONFLICT WITH PROPOSED IMPROVEMENTS) SHALL BE VERIFIED IN THE FIELD. CALL MISS DIG'S WORKING DAYS PRIOR TO CONSTRUCTION.

UTILITY NOTE

UTILITY INFORMATION ON THIS DRAWING MAY BE FROM INFORMATION DISCLOSED TO THIS FIRM BY THE VARIOUS UTILITY COMPANIES, CITY/COUNTY AGENCIES AND OTHER VARIOUS SOURCES. UNDERGROUND UTILITIES WHICH ARE ON PRIVATE PROPERTY ARE USUALLY NOT DELINEATED UPON A UTILITY COMPANY'S PUBLISHED PLANS. THEIR LOCATION, IF SHOWN, UPON THIS SURVEY, ARE APPROXIMATED FROM FOUND PAINT MARKS/STAKES, ETC. AS LOCATED BY THIS FIRM FROM SOURCES WHICH ARE UNKNOWN. NO GUARANTEE IS GIVEN AS TO THE COMPLETENESS OR ACCURACY THEREOF.

COPYRIGHT © 2023 SPALDING DEDecker ASSOCIATES, INC. THIS DRAWING AND THE SUBJECT MATTER CONTAINED THEREON IS PROPRIETARY AND IS NOT TO BE USED OR REPRODUCED WITHOUT WRITTEN PERMISSION OF SPALDING DEDecker ASSOCIATES, INC.

VAN BUREN PUBLIC SCHOOLS EDGEMONT ELEMENTARY CONCRETE IMPROVEMENTS

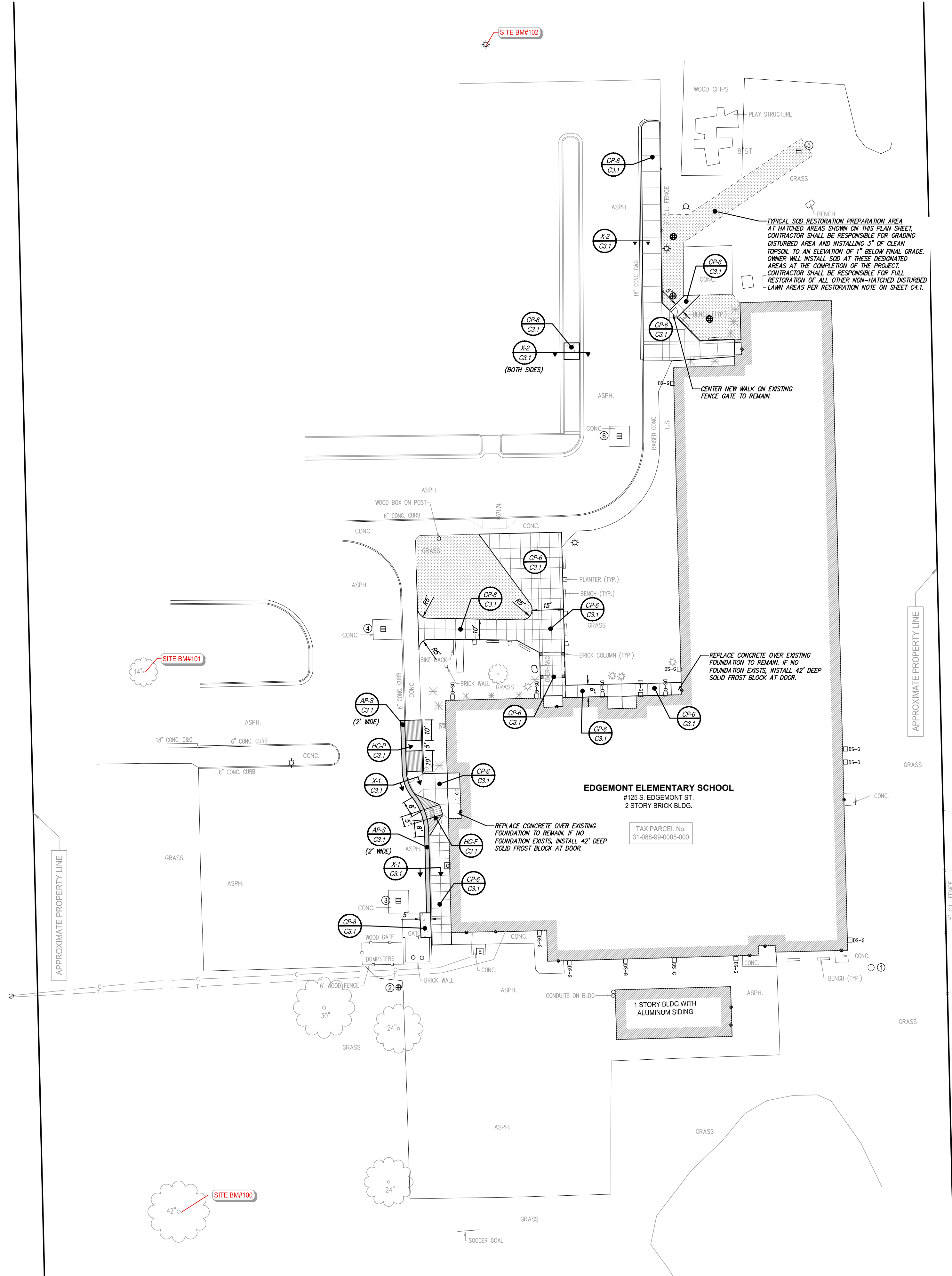
DEMOLITION PLAN

SECTION 22
TOWN 03 SOUTH RANGE 08 EAST
VAN BUREN TOWNSHIP
WAYNE COUNTY, MICHIGAN

NO.	DATE	REVISION
1	03-17-23	OWNER REVIEW
2	03-31-23	BIDS

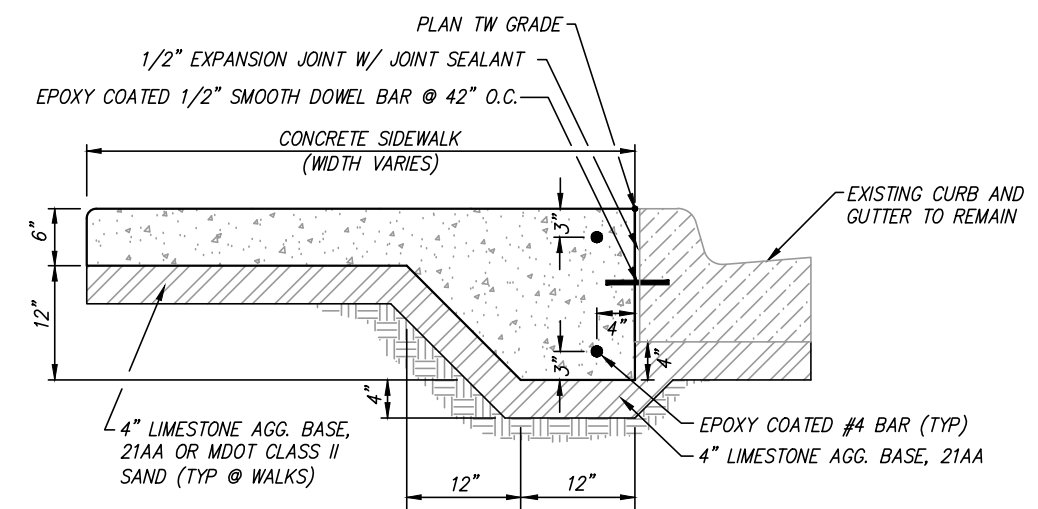
VERIFY SCALES	
BAR IS ONE INCH ON ORIGINAL DRAWING	
IF NOT ONE INCH ON THIS SHEET, ADJUST SCALES ACCORDINGLY	
DRAWN BY C. YANG	DATE 03-07-23
DESIGNED BY J. ENSLEY	DATE 03-07-23
CHECKED BY J. ENSLEY	DATE
PROJECT MANAGER T. SOVEL	BID PLAN DATE
DEPARTMENT MANAGER APPROVAL T. SOVEL	DATE
JOB NO. NP22156	DRAWING NO. NP22156DEM
SCALE: 1" = 30'	SHEET NO. C2.1

S. EDMONT ST.

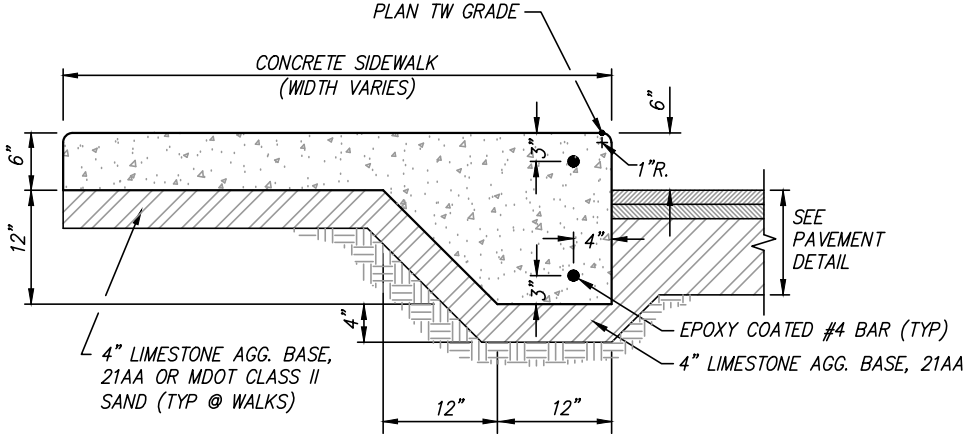


SIDEWALK RAMP NOTES (MDOT DETAIL R-28-J MODIFIED)

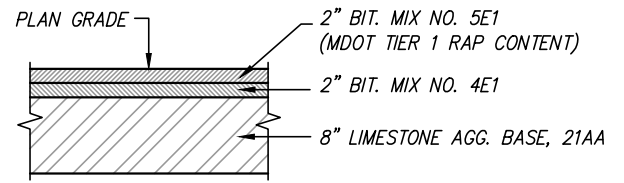
1. DETAILS SPECIFIED ON THIS PLAN APPLY TO ALL CONSTRUCTION, RECONSTRUCTION, OR ALTERATION OF STREETS, CURBS, OR SIDEWALKS BY ALL PUBLIC AGENCIES AND BY ALL PRIVATE ORGANIZATIONS CONSTRUCTING FACILITIES FOR PUBLIC USE.
2. SURFACE TEXTURE OF THE RAMP SHALL BE THAT OBTAINED BY A COARSE BROOMING, TRANSVERSE TO THE RUNNING SLOPE.
3. CARE SHALL BE TAKEN TO ASSURE A UNIFORM GRADE ON THE RAMP, WHERE CONDITIONS PERMIT, IT IS DESIRABLE THAT THE SLOPE OF THE RAMP BE IN ONLY ONE DIRECTION, PARALLEL TO THE DIRECTION OF TRAVEL.
4. PROVIDE TURNING SPACES WHERE PEDESTRIAN TURNING MOVEMENTS ARE REQUIRED.
5. CURB RAMPS WITH RUNNING SLOPE EQUAL TO OR LESS THAN 5% DO NOT REQUIRE A TOP LANDING. HOWEVER, ANY CONTINUOUS SIDEWALK OR PEDESTRIAN ROUTE CROSSING THROUGH OR INTERSECTING THE CURB RAMP MUST INDEPENDENTLY MAINTAIN A CROSS SLOPE NOT GREATER THAN 2% PERPENDICULAR TO ITS OWN DIRECTION(S) OF TRAVEL.
6. DETECTABLE WARNING SURFACE COVERAGE IS 24" MINIMUM IN THE DIRECTION OF RAMP/PATH TRAVEL AND THE FULL WIDTH OF THE RAMP/PATH OPENING EXCLUDING CURBED OR FLARED CURB TRANSITION AREAS. A BORDER OFFSET NOT GREATER THAN 2" MEASURED ALONG THE EDGES OF THE DETECTABLE WARNING IS ALLOWABLE. FOR RADIAL CURB THE OFFSET IS MEASURED FROM THE ENDS OF THE RADII.
7. THE MAXIMUM RUNNING SLOPE OF 8.3% IS RELATIVE TO A FLAT (0%) REFERENCE. HOWEVER, IT SHALL NOT REQUIRE ANY RAMP OR SERIES OF RAMPS TO EXCEED 15 FEET IN LENGTH INCLUDING LANDINGS OR TRANSITIONS.
8. THE TOP OF THE JOINT FILLER FOR ALL RAMP TYPES SHALL BE FLUSH WITH THE ADJACENT CONCRETE.
9. FLARED SIDES WITH A SLOPE OF 10% MAXIMUM, MEASURED ALONG THE ROADSIDE CURB LINE, SHALL BE PROVIDED WHERE AN UNSTRUCTURED CIRCULATION PATH LATERALLY CROSSES THE SIDEWALK RAMP. FLARED SIDES ARE NOT REQUIRED WHERE THE RAMP IS BORDERED BY LANDSCAPING, UNPAVED SURFACE OR PERMANENT FIXED OBJECTS. WHERE THEY ARE NOT REQUIRED, FLARED SIDES CAN BE CONSIDERED IN ORDER TO AVOID SHARP CURB RETURNS AT RAMP OPENINGS.
10. DETECTABLE WARNING PLATES MUST BE INSTALLED USING FABRICATED OR FIELD CUT UNITS CAST AND/OR ANCHORED IN THE PAVEMENT TO RESIST SHIFTING OR HEAVING. DETECTABLE WARNING PLATES TO BE RED CAST-IN-PLACE "ARMOR-TILE", OR APPROVED EQUAL, IN ACCORDANCE WITH AND SECTIONS 406.13 AND 705, AND ADA CODE OF REGULATION 4.29.



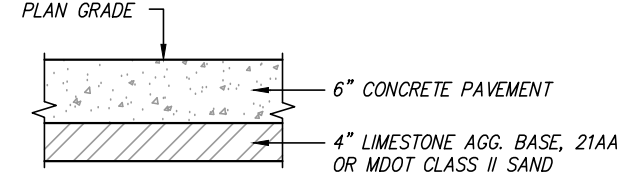
SECTION WALKEX. CURB & GUTTER STANDARD PAN



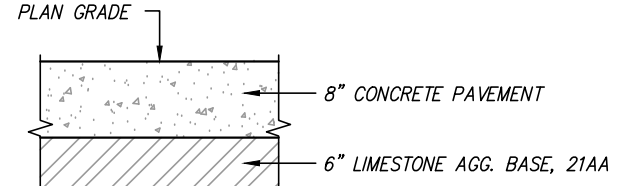
SECTION INTEGRAL WALK/CURB



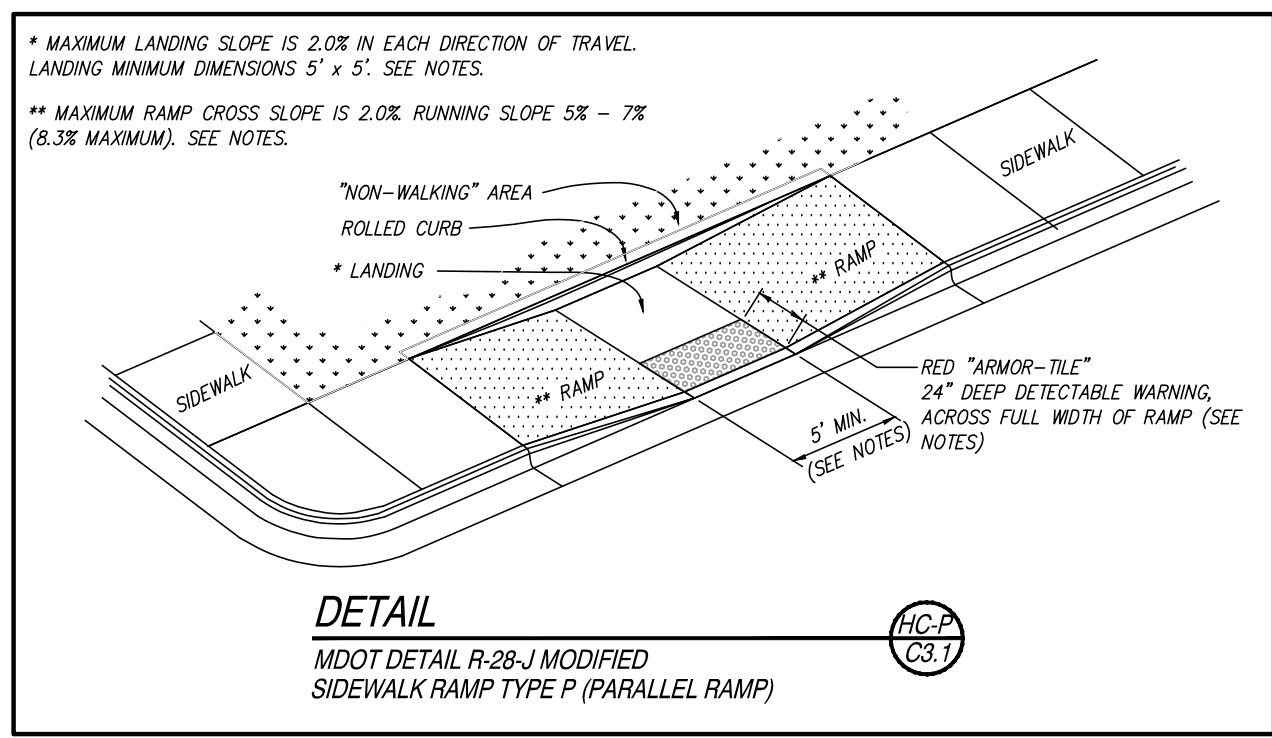
DETAIL STANDARD BITUMINOUS PAVEMENT



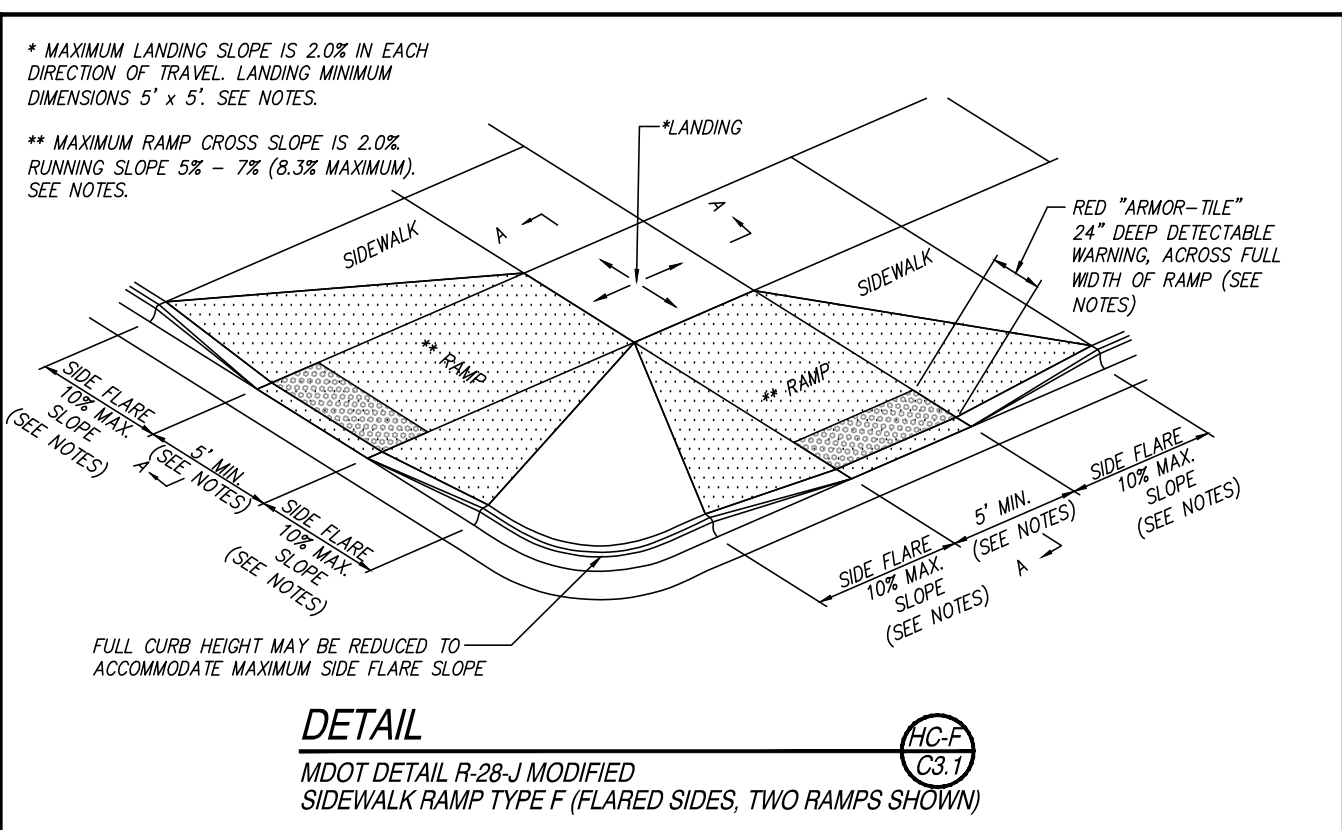
DETAIL 6\"/>



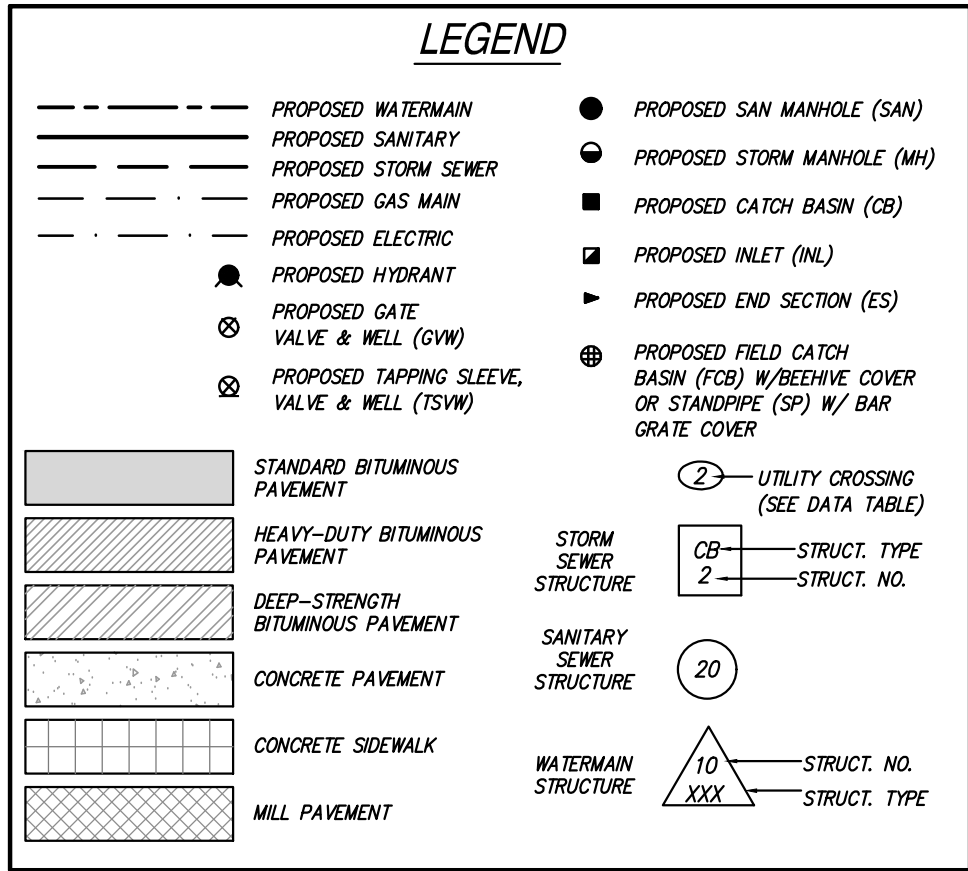
DETAIL 8\"/>



DETAIL MDOT DETAIL R-28-J MODIFIED SIDEWALK RAMP TYPE P (PARALLEL RAMP)



DETAIL MDOT DETAIL R-28-J MODIFIED SIDEWALK RAMP TYPE F (FLARED SIDES, TWO RAMPS SHOWN)



PAVING CONSTRUCTION NOTES

1. EARTHWORK AND PAVEMENT CONSTRUCTION SHALL BE PERFORMED IN ACCORDANCE WITH THE CURRENT MDOT STANDARD SPECIFICATIONS FOR CONSTRUCTION UNLESS OTHERWISE NOTED IN THE FOLLOWING ITEMS.
2. REMOVE ANY EXISTING TOPSOIL, VEGETATION, TREES AND OTHER DELETERIOUS MATERIALS TO EXPOSE THE SUBGRADE SOIL. TREE ROOTS SHALL BE COMPLETELY REMOVED.
3. EXCAVATE TO THE DEPTH OF THE FINAL SUBGRADE ELEVATION TO ALLOW FOR GRADE CHANGES AND THE PLACEMENT OF THE RECOMMENDED PAVEMENT SYSTEM.
4. THE TOP 12 INCHES OF THE EXPOSED SUBGRADE SHALL BE COMPACTED TO A DENSITY NO LESS THAN 95 PERCENT OF THE MAXIMUM DENSITY AS DETERMINED BY THE MODIFIED PROCTOR (ASTM D 1557-91).
5. THE FINAL SUBGRADE SHALL BE THOROUGHLY PROFFERED UNDER THE OBSERVATION OF A GEOTECHNICAL PAVEMENT ENGINEER. LOOSE OR YIELDING AREAS WHICH CANNOT BE MECHANICALLY STABILIZED SHALL BE REMOVED AND REPLACED WITH ENGINEERED FILL OR AS DICTATED BY FIELD CONDITIONS.
6. THE AGGREGATE BASE SHALL BE COMPACTED TO A DENSITY NO LESS THAN 95 PERCENT OF THE MAXIMUM DENSITY AS DETERMINED BY THE MODIFIED PROCTOR (ASTM D 1557-91). THE BASE SHALL EXTEND A MINIMUM OF 1 FOOT BEYOND THE PAVED EDGE.
7. ALL BITUMINOUS MATERIAL SHALL BE COMPACTED TO A DENSITY NO LESS THAN 97 PERCENT OF THE MAXIMUM DENSITY AS DETERMINED BY THE MARSHALL METHOD.
8. A BOND COAT OF SS-1H EMULSION IS REQUIRED BETWEEN THE LEVELING COURSE AND THE WEARING COURSE WHEN EITHER 24 HOURS HAVE ELAPSED BETWEEN PLACEMENT OF THE BITUMINOUS COURSES OR THE SURFACE OF THE PAVEMENT HAS BEEN CONTAMINATED WITH DIRT, DUST OR FOREIGN MATERIAL. THE BOND COAT SHALL BE APPLIED IN A UNIFORM MANNER OVER THE SURFACE AT A RATE OF 0.1 GALLONS/S.Y. IN THE EVENT A BOND COAT IS NOT REQUIRED, THE LEVELING COURSE MAY REQUIRE LOCALIZED BROOM CLEANING.
9. PERFORMANCE GRADE PG64-22 ASPHALT CEMENT SHALL BE USED IN THE PRODUCTION OF ALL BITUMINOUS MIXTURES. RECLAIMED ASPHALT PAVEMENT (RAP) SHALL BE ALLOWED ONLY AS SPECIFIED BY THE CURRENT MDOT STANDARD SPECIFICATIONS FOR CONSTRUCTION, UNLESS NOTED ON THE PROJECT DETAILS.
10. CONSTRUCTION TRAFFIC SHALL BE MINIMIZED ON THE NEW PAVEMENT. IF CONSTRUCTION TRAFFIC IS ANTICIPATED ON THE PAVEMENT STRUCTURE, THE PLACEMENT OF THE FINAL LIFT SHALL BE DELAYED UNTIL THE MAJORITY OF THE CONSTRUCTION ACTIVITIES HAVE BEEN COMPLETED. THIS ACTION WILL ALLOW REPAIR OF LOCALIZED FAILURE, IF ANY DOES OCCUR, AS WELL AS REDUCE LOAD DAMAGE ON THE PAVEMENT SYSTEM. THE CONTRACTOR IS RESPONSIBLE FOR REPAIR TO ANY DAMAGED SECTION RESULTING FROM CONSTRUCTION ACTIVITY.
11. CONTRACTOR SHALL PROTECT EXISTING CURB, GUTTER, SIDEWALK, WALLS, FENCES AND ALL OTHER EXISTING SITE FEATURES NOT INDICATED FOR REMOVAL OR REHABILITATION.
12. PLACE EXPANSION JOINTS WHERE NEW CONCRETE PAVEMENT OR WALKS ABUT BUILDING WALLS (PROPOSED OR EXISTING), CURB, OR EXISTING CONCRETE PAVEMENT. PLACE JOINT SEALANT ON ALL EXPANSION JOINTS.
13. CONTRACTOR TO CONSTRUCT CONTRACTION AND EXPANSION JOINTS IN ALL NEW CONCRETE PAVEMENT. CONTRACTION JOINTS SHALL BE TOoled WHERE SIDEWALK WIDTH IS 8' OR LESS, AND SHALL BE SPACED EQUAL TO THE WIDTH OF THE PAVEMENT (I.E. 8' SPACING FOR 8' WIDE WALKS), BUT NOT MORE THAN 10' APART. PLACE EXPANSION JOINTS WITH JOINT SEALANT AT MAXIMUM 50' SPACING. CONTRACTOR SHALL GENERALLY MATCH THE JOINT PATTERNS FOR CONCRETE PAVEMENT WHEN SHOWN ON THE PLANS.
14. CONCRETE PAVEMENT SHALL MEET THE REQUIREMENTS FOR MDOT GRADE 4000 CONCRETE PER THE CURRENT MDOT STANDARD SPECIFICATIONS FOR CONSTRUCTION.
15. REPLACE ALL DISTURBED PAVEMENT MARKINGS (CROSSWALKS, HATCHING, ETC.) WHERE ASPHALT PATCHING HAS DISTURBED EXISTING.

SPALDING DeDECKER
Engineering and Surveying
Excellence Since 1954

905 South Blvd. East
Rochester Hills, MI 48307
Phone (248) 844-5400
Fax (248) 844-5404

15 E. Baltimore St.
Detroit, MI 48202
Phone (313) 305-9120
Fax (313) 305-9121

27333 Meadowbrook Rd., Suite 210
Novi, MI 48377
Phone (248) 844-6274

400 Ann St. NW, Suite 204
Grand Rapids, MI 49504
Phone (616) 885-5802
www.sda-eng.com
(800) 598-1600

VAN BUREN PUBLIC SCHOOLS EDGEMONT ELEMENTARY CONCRETE IMPROVEMENTS

PAVING AND LAYOUT PLAN

SECTION 22
TOWN 03 SOUTH RANGE 08 EAST
VAN BUREN TOWNSHIP
WAYNE COUNTY, MICHIGAN

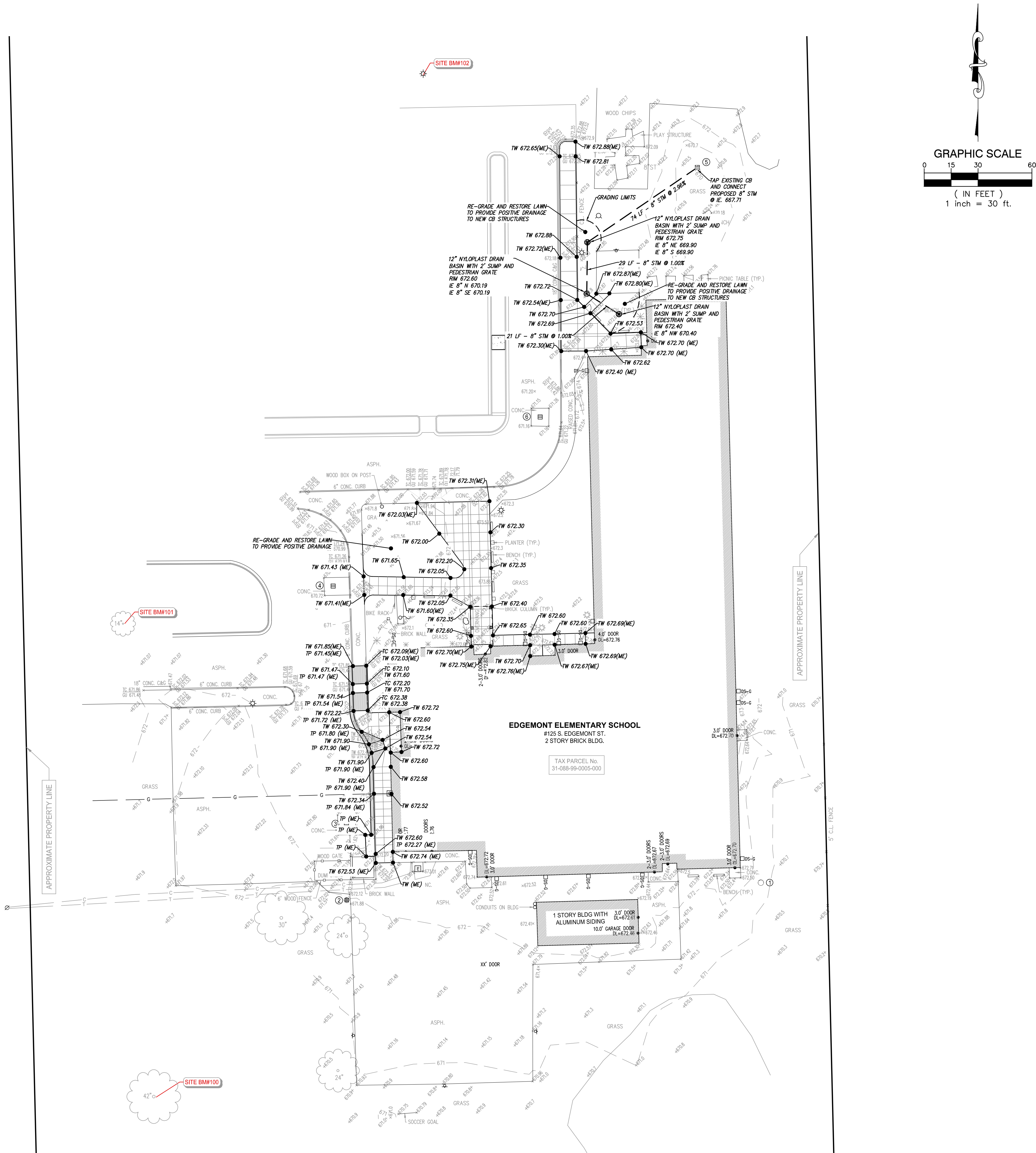
NO.	DATE	REVISION
1	03-17-23	OWNER REVIEW
2	03-31-23	BIDS

VERIFY SCALES	
BAR IS ONE INCH ON ORIGINAL DRAWING IF NOT ONE INCH ON THIS SHEET, ADJUST SCALES ACCORDINGLY	
DRAWN BY C.YANG	DATE 03-07-23
DESIGNED BY J. ENSLEY	DATE 03-07-23
CHECKED BY J. ENSLEY	DATE
PROJECT MANAGER T.SOVEL	BID PLAN DATE
DEPARTMENT MANAGER APPROVAL T.SOVEL	DATE
JOB NO. NP22156	DRAWING NO. NP22156PAV
SCALE: 1" = 30'	SHEET NO. C3.1

S. EDMONT ST.

APPROXIMATE PROPERTY LINE

APPROXIMATE PROPERTY LINE



LEGEND	
--- PROPOSED WATERMAIN	● PROPOSED SAN MANHOLE (SAN)
--- PROPOSED SANITARY	● PROPOSED STORM MANHOLE (MH)
--- PROPOSED STORM SEWER	■ PROPOSED CATCH BASIN (CB)
--- PROPOSED GAS MAIN	■ PROPOSED INLET (INL)
--- PROPOSED ELECTRIC	▶ PROPOSED END SECTION (ES)
● PROPOSED HYDRANT	● PROPOSED FIELD CATCH BASIN (FCB) W/BEEHIVE COVER OR STANDPIPE (SP) W/ BAR GRATE COVER
⊗ PROPOSED GATE VALVE & WELL (GVW)	○ UTILITY CROSSING (SEE DATA TABLE)
⊗ PROPOSED TAPPING SLEEVE, VALVE & WELL (TSVW)	CB --- STRUCT. TYPE 2 --- STRUCT. NO.
STANDARD BITUMINOUS PAVEMENT	20
HEAVY-DUTY BITUMINOUS PAVEMENT	WATERMAIN STRUCTURE 10 --- STRUCT. NO. XXX --- STRUCT. TYPE
DEEP-STRENGTH BITUMINOUS PAVEMENT	
CONCRETE PAVEMENT	
CONCRETE SIDEWALK	
MILL PAVEMENT	

GRADING LEGEND	
EXISTING ELEVATION	PROPOSED TOP OF CURB ELEVATION
PROPOSED TOP OF GUTTER ELEVATION	PROPOSED GUTTER ELEVATION
OUTSIDE GRADE ELEVATION	EXISTING CONTOURS
EXISTING CONTOURS	PROPOSED CONTOURS
TOP OF PAVEMENT ELEVATION	TOP OF WALK ELEVATION
FINISH GRADE ELEVATION	TOP OF WALL ELEVATION
MATCH EXISTING ELEVATION	FLOW ARROW

- ### GRADING NOTES
- CONTRACTOR TO PLACE ALL NEW PAVEMENT TO THE GRADES INDICATED, OR MATCH ORIGINAL GRADES IF NEW GRADES ARE NOT SHOWN. CONTRACTOR SHALL CONFIRM MINIMUM 1% PAVEMENT SLOPES ARE ATTAINED IN ALL AREAS.
 - PROPOSED GRADES MAY BE BASED ON AN INTERPOLATION OF DATA SHOWN ON THE TOPOGRAPHIC SURVEY. THIS INTERPOLATED DATA IS APPROXIMATE AND COULD DIFFER SLIGHTLY BASED ON THE ACCURACY OF THE SURVEY. CONTRACTOR SHALL CONFIRM THAT THE PROPOSED GRADES SHOWN ON THIS PLAN WILL NOT CREATE A STANDING WATER CONDITION (I.E. A LOW SPOT OR PAVEMENT SLOPES LESS THAN 1%) OR AN UNSAFE CONDITION WITH SLOPES IN EXCESS OF 5%. CONTRACTOR SHALL NOTIFY ENGINEER IMMEDIATELY IF THEY BELIEVE THAT ONE OF THESE SITUATIONS WILL OCCUR BASED ON THE PROPOSED GRADES.
 - ALL HANDICAP RAMPS AND ADA ACCESSIBLE ROUTES SHALL BE CONSTRUCTED IN ACCORDANCE WITH THE CURRENT VERSION OF ADOT DETAIL R-28 "SIDEWALK RAMP AND DETECTABLE WARNING DETAILS".
 - CONTRACTOR IS RESPONSIBLE FOR CONTROLLING STORM WATER RUNOFF DURING CONSTRUCTION OPERATIONS OF PARTICULAR CONCERN WILL BE THE TIME PERIOD AFTER THE SITE HAS BEEN STRIPPED AND NOT YET RESTORED, BUILT UPON, OR PAVED. CONTRACTOR MUST INSTALL OR CONSTRUCT APPROPRIATE TEMPORARY MEASURES TO PROTECT ADJACENT PROPERTIES.

RESTORATION NOTE

WHERE NOTED ON SHEET C3.1, CONTRACTOR SHALL BE RESPONSIBLE FOR GRADING DISTURBED AREA AND INSTALLING 3" OF CLEAN TOPSOIL TO AN ELEVATION OF 1" BELOW FINAL GRADE. OWNER WILL INSTALL SOO AT THESE DESIGNATED AREAS AT THE COMPLETION OF THE PROJECT.

CONTRACTOR SHALL RESTORE ALL OTHER DISTURBED NON-PAVED LAWN AREAS WITH 3" OF CLEAN TOPSOIL AND SEED MIX (30% KENTUCKY BLUEGRASS, 20% PERENNIAL RYEGRASS, 50% CREEPING RED FESCUE). PLACE MULCH IN ALL SEEDING AREAS ON SLOPES IN EXCESS OF 10 HORIZONTAL TO 1 VERTICAL. PLACE NORTH AMERICAN GREEN (30%) MULCH BLANKET IMMEDIATELY AFTER SEEDING. USE METAL STAPLES PER MANUFACTURERS RECOMMENDATIONS TO HOLD MATTING IN PLACE.

- ### UTILITY NOTES
- ALL STORM SEWER SHALL BE HOPE SMOOTH INTERIOR CORRUGATED PIPE MEETING AASHTO STANDARD W294M-98, UNLESS OTHERWISE NOTED ON PLAN. INSTALLATION SHALL ADHERE TO ASTM D2238 SPECIFICATION. AFTER INSTALLATION, PIPE SHALL BE CHECKED FOR DEFLECTION BY A METHOD APPROVED BY THE PIPE MANUFACTURER. ANY PIPE DEFLECTION EXCEEDING THE ALLOWABLE MAXIMUM MUST BE REMOVED AND REPLACED.
 - ALL UTILITY TRENCHES THAT FALL WITHIN A 1'-ON-1 INFLUENCE OF PAVEMENT AREAS SHALL BE BACKFILLED WITH CLASS 2 SAND AND COMPACTED TO 95% OF MAXIMUM DENSITY.
 - ALL UTILITIES SHALL BE INSTALLED ON CLASS "B" BEDDING OR BETTER.

LAWN RE-GRADING

WHERE SIDEWALK REPLACEMENT IS ADJACENT TO LAWN, RE-GRADE AND RESTORE LAWN AS NECESSARY TO BLEND GRADES AND PROVIDE POSITIVE DRAINAGE. CONTRACTOR TO FIELD VERIFY LIMITS.

SPALDING DeDECKER
Engineering and Surveying
Excellence Since 1954

905 South Blvd. East
Rochester Hills, MI 48307
Phone (248) 844-5400
Fax (248) 844-5404

15 E. Baltimore St.
Detroit, MI 48202
Phone (313) 305-9120
Fax (313) 305-9121

27333 Meadowbrook Rd., Suite 210
Novi, MI 48377
Phone (248) 844-6274

400 Ann St. NW, Suite 204
Grand Rapids, MI 49504
Phone (616) 885-5802

www.sda-eng.com
(800) 598-1600

811
Know what's below.
Call before you dig.

PRIOR TO CONSTRUCTION, ALL LOCATIONS AND DEPTHS OF EXISTING UTILITIES (IN CONFLICT WITH PROPOSED IMPROVEMENTS) SHALL BE VERIFIED IN THE FIELD. CALL MISS DIG'S WORKING DAYS PRIOR TO CONSTRUCTION.

UTILITY NOTE

UTILITY INFORMATION ON THIS DRAWING MAY BE FROM INFORMATION DISCLOSED TO THIS FIRM BY THE VARIOUS UTILITY COMPANIES, CITY/COUNTY AGENCIES AND OTHER VARIOUS SOURCES. UNDERGROUND UTILITIES WHICH ARE ON PRIVATE PROPERTY ARE USUALLY NOT DELINEATED UPON A UTILITY COMPANY'S PUBLISHED PLANS. THEIR LOCATION, IF SHOWN, UPON THIS SURVEY, ARE APPROXIMATED FROM FOUND PAINT MARKERS/STAKES, ETC. AS LOCATED BY THIS FIRM FROM SOURCES WHICH ARE UNKNOWN. NO GUARANTEE IS GIVEN AS TO THE COMPLETENESS OR ACCURACY THEREOF.

COPYRIGHT © 2023 SPALDING DEDDECKER ASSOCIATES, INC. THIS DRAWING AND THE SUBJECT MATTER CONTAINED THEREON IS PROPRIETARY AND IS NOT TO BE USED OR REPRODUCED WITHOUT WRITTEN PERMISSION OF SPALDING DEDDECKER ASSOCIATES, INC.

VAN BUREN PUBLIC SCHOOLS EDGEMONT ELEMENTARY CONCRETE IMPROVEMENTS

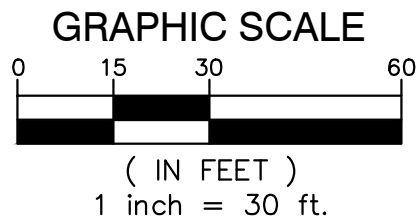
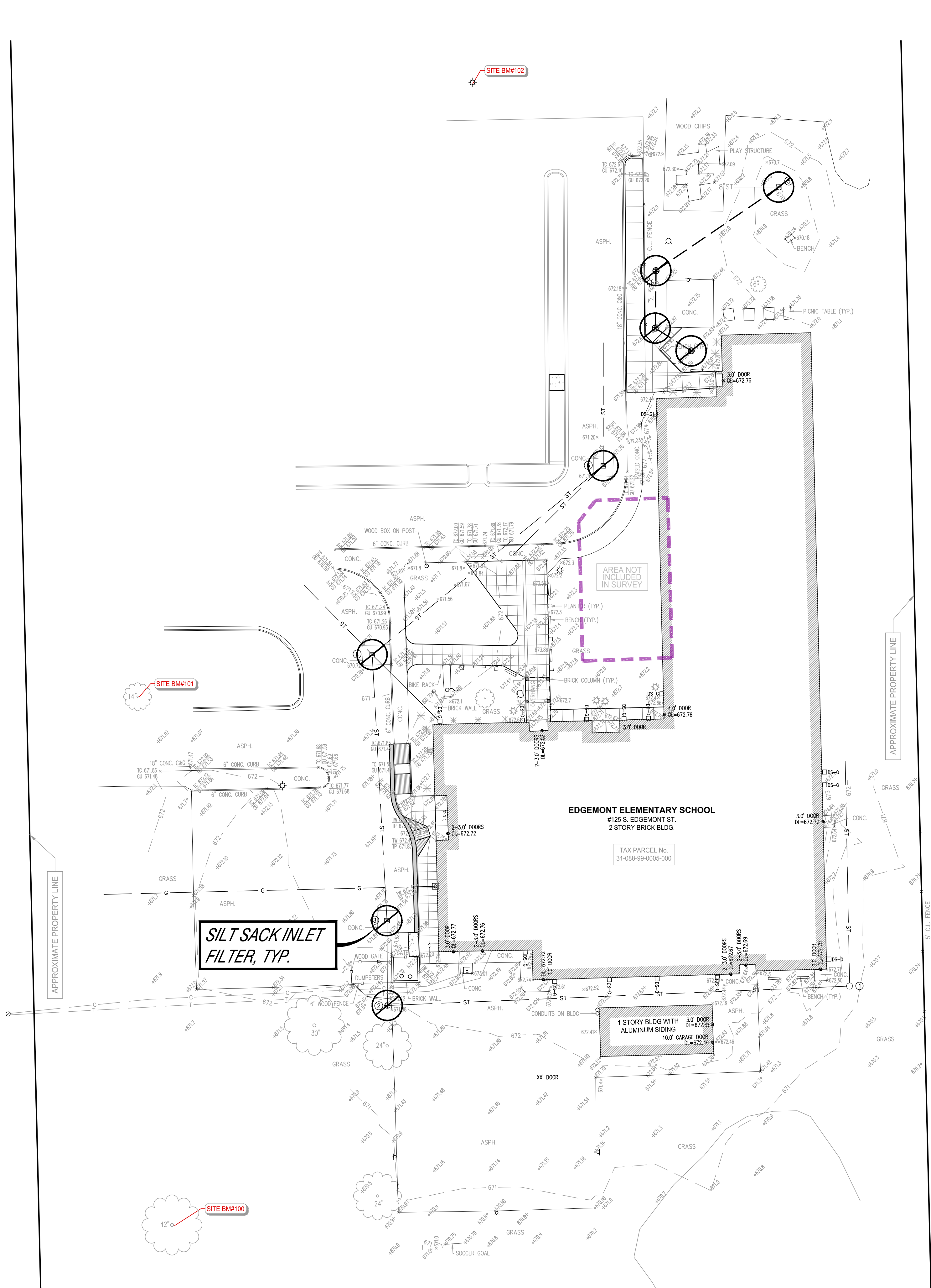
GRADING AND DRAINAGE PLAN

SECTION 22
TOWN 03 SOUTH RANGE 08 EAST
VAN BUREN TOWNSHIP
WAYNE COUNTY, MICHIGAN

NO.	DATE	REVISION
1	03-17-23	OWNER REVIEW
2	03-31-23	BIDS

VERIFY SCALES	
BAR IS ONE INCH ON ORIGINAL DRAWING IF NOT ONE INCH ON THIS SHEET, ADJUST SCALES ACCORDINGLY	
DRAWN BY C. YANG	DATE 03-07-23
DESIGNED BY J. ENSLEY	DATE 03-07-23
CHECKED BY J. ENSLEY	DATE
PROJECT MANAGER T. SOVEL	BID PLAN DATE
DEPARTMENT MANAGER APPROVAL T. SOVEL	DATE
JOB NO. NP22156	DRAWING NO. NP22156GRP
SCALE: 1" = 30'	SHEET NO. C4.1

S. EDMONT ST.



LEGEND			
---	PROPOSED WATERMAIN	●	PROPOSED SAN MANHOLE (SAN)
---	PROPOSED SANITARY	●	PROPOSED STORM MANHOLE (MH)
---	PROPOSED STORM SEWER	■	PROPOSED CATCH BASIN (CB)
---	PROPOSED GAS MAIN	■	PROPOSED INLET (INL)
---	PROPOSED ELECTRIC	▶	PROPOSED END SECTION (ES)
●	PROPOSED HYDRANT	⊕	PROPOSED FIELD CATCH BASIN (FCB) W/BEEHIVE COVER OR STANDPIPE (SP) W/ BAR GRATE COVER
⊗	PROPOSED GATE VALVE & WELL (GVW)	⊕	UTILITY CROSSING (SEE DATA TABLE)
⊗	PROPOSED TAPPING SLEEVE, VALVE & WELL (TSVW)	CB	STORM SEWER STRUCT. TYPE
■	STANDARD BITUMINOUS PAVEMENT	2	STORM SEWER STRUCT. NO.
■	HEAVY-DUTY BITUMINOUS PAVEMENT	20	SANITARY SEWER STRUCT. TYPE
■	DEEP-STRENGTH BITUMINOUS PAVEMENT	10	SANITARY SEWER STRUCT. NO.
■	CONCRETE PAVEMENT	XXX	WATERMAIN STRUCT. TYPE
■	CONCRETE SIDEWALK		
■	MILL PAVEMENT		

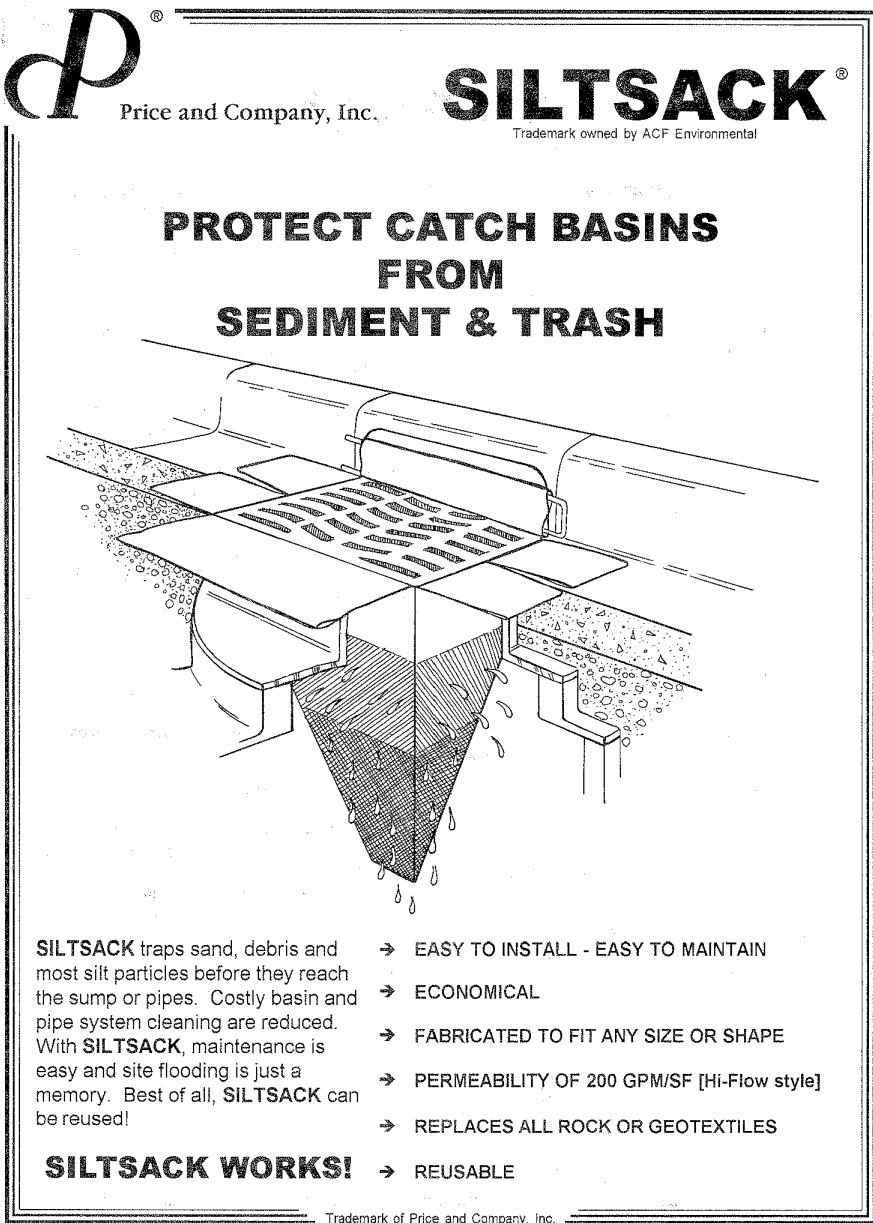
SITE NOTES:
APPROX. GROSS ACREAGE DISTURBED = 0.162± ACRES
DISTANCE TO NEAREST BODY OF WATER = 585± LF (BUNTON DRAIN)
THEREFORE, A SOIL EROSION PERMIT IS NOT REQUIRED.

SOIL TYPES:
Co - CORUNNA FINE SANDY LOAM
Gt - GILFORD SANDY LOAM
WGA - WASEPI SANDY-LOAM, 0 TO 4 PERCENT SLOPES

THIS PROJECT SHALL BE CONSTRUCTED IN COMPLIANCE WITH PART 91 OF ACT 451 OF 1994, AS AMENDED. THE SOIL EROSION AND SEDIMENT CONTROL ACT.

SOIL EROSION CONTROL DEVICES

⊗ CATCH BASIN FILTER BAG (SILT SACK OR EQUIVALENT)



SPALDING DeDECKER
Engineering and Surveying
Excellence Since 1954

905 South Blvd. East
Rochester Hills, MI 48307
Phone (248) 844-5400
Fax (248) 844-5404

15 E. Baltimore St.
Detroit, MI 48202
Phone (313) 305-9120
Fax (313) 305-9121

27333 Meadowbrook Rd., Suite 210
Novi, MI 48377
Phone (248) 844-6274

400 Ann St. NW, Suite 204
Grand Rapids, MI 49504
Phone (616) 885-5802

www.sda-eng.com
(800) 598-1600

811
Know what's below.
Call before you dig.

PRIOR TO CONSTRUCTION, ALL LOCATIONS AND DEPTHS OF EXISTING UTILITIES (IN CONFLICT WITH PROPOSED IMPROVEMENTS) SHALL BE VERIFIED IN THE FIELD. CALL MISS DIG'S WORKING DAYS PRIOR TO CONSTRUCTION.

UTILITY NOTE

UTILITY INFORMATION ON THIS DRAWING MAY BE FROM INFORMATION DISCLOSED TO THIS FIRM BY THE VARIOUS UTILITY COMPANIES, CITY/COUNTY AGENCIES AND OTHER VARIOUS SOURCES. UNDERGROUND UTILITIES WHICH ARE ON PRIVATE PROPERTY ARE USUALLY NOT DELINEATED UPON A UTILITY COMPANY'S PUBLISHED PLANS. THEIR LOCATION, IF SHOWN, UPON THIS SURVEY, ARE APPROXIMATED FROM FOUND PAINT MARKS/STAKES, ETC. AS LOCATED BY THIS FIRM FROM SOURCES WHICH ARE UNKNOWN. NO GUARANTEE IS GIVEN AS TO THE COMPLETENESS OR ACCURACY THEREOF.

COPYRIGHT © 2023 SPALDING DEDERKER ASSOCIATES, INC. THIS DRAWING AND THE SUBJECT MATTER CONTAINED THEREON IS PROPRIETARY AND IS NOT TO BE USED OR REPRODUCED WITHOUT WRITTEN PERMISSION OF SPALDING DEDERKER ASSOCIATES, INC.

**VAN BUREN PUBLIC SCHOOLS
EDGEMONT ELEMENTARY
CONCRETE IMPROVEMENTS**

**SOIL EROSION AND
SEDIMENTATION CONTROL PLAN**

SECTION 22 TOWN 03 SOUTH RANGE 08 EAST VAN BUREN TOWNSHIP WAYNE COUNTY, MICHIGAN		
NO.	DATE	REVISION
1	03-17-23	OWNER REVIEW
2	03-31-23	BIDS

VERIFY SCALES	
BAR IS ONE INCH ON ORIGINAL DRAWING IF NOT ONE INCH ON THIS SHEET, ADJUST SCALES ACCORDINGLY	
DRAWN BY C. YANG	DATE 03-07-23
DESIGNED BY J. ENSLEY	DATE 03-07-23
CHECKED BY J. ENSLEY	DATE
PROJECT MANAGER T. SOVEL	BID PLAN DATE
DEPARTMENT MANAGER APPROVAL T. SOVEL	DATE
JOB NO. NP22156	DRAWING NO. NP22156SEC
SCALE: 1" = 30'	SHEET NO. C5.1