



T M P ARCHITECTURE I N C  
1191 WEST SQUARE LAKE ROAD · BLOOMFIELD HILLS · MICHIGAN · 48302  
PH · 248.338.4561 FX · 248.338.0223 EM · INFO @TMP-ARCHITECTURE.COM

# ANDERSON HIGH SCHOOL FIELD HOUSE SITE IMPROVEMENTS

## SOUTHGATE COMMUNITY SCHOOLS

SOUTHGATE MI, 48195  
PROJECT NUMBER 20035E  
CONSTRUCTION

CONSULTANTS:  
CIVIL ENGINEER  
**SPALDING, DeDECKER ASSOCIATES, INC.**  
**CIVIL ENGINEERS**  
905 SOUTH BOULEVARD EAST  
ROCHESTER HILLS, MICHIGAN 48307  
PHONE: (248) 844-5400  
FAX: (248) 844-5404

- LIST OF DRAWINGS  
GENERAL INFORMATION .....  
TS.1 COVER SHEET
- CIVIL .....  
C1.1 DEMOLITION PLAN  
C1.2 DEMOLITION PLAN - ALTERNATE  
C2.1 UTILITY PLAN  
C3.1 PAWING PLAN  
C3.2 PAWING PLAN - ALTERNATE  
C3.3 DETAILS  
C4.1 GRADING PLAN  
C5.1 SOIL EROSION AND SEDIMENTATION CONTROL PLAN  
C5.2 SOIL EROSION AND SEDIMENTATION CONTROL DETAILS  
C6.1 TOPOGRAPHICAL SURVEY  
C7.1 STORM SEWER DETAILS

PROJECT DATA:

LOCATION MAP

SOUTHGATE, MI. NO SCALE

BUILDING: .....

BUILDING AREA(S) = -

CODE: .....

GOVERNING CODES :  
- 2016 SCHOOL FIRE SAFETY RULES  
- (2012 Life Safety Code, plus amendments)  
- 2015 MICHIGAN BUILDING CODE  
- 2015 MICHIGAN REHABILITATION CODE FOR EXISTING BUILDINGS  
- 2015 MICHIGAN PLUMBING CODE  
- 2015 MICHIGAN UNIFORM ENERGY CODE  
(ANSI/ASHRAE/IESNA Standard 90.1-2013)  
- 2017 MICHIGAN ELECTRICAL RULES (2014 NEC, plus Part 8 Rules)  
- MICHIGAN BARRIER TREE CODE  
(Michigan Building Code 2015 and ICC A117.1-2009)

ADDRESS: ANDERSON HIGH SCHOOL  
15475 LEROY ST.  
SOUTHGATE, MICHIGAN 48195

CONSTRUCTION CLASSIFICATION :  
B.C.C. - II B  
B.F.S. - II (000)  
USE GROUP CLASSIFICATION: E (EDUCATION)

LICENSEE'S STATEMENT:

This Document has been prepared under the supervision of the Architect, as the person in Responsible Charge with the firm of TMP ARCHITECTURE, INC.. An original embossed or rubber stamp seal and original signature of the Architect is required and shall be affixed to any copy of this Document submitted to a governmental agency for approval or record. This is in conformance with the State of Michigan's PA 299, Article 20 and the General Rules of the Board of Architects.

The Architect's seal provided hereon does not take responsibility for certain portions of the Documentation or project requiring the services of a licensed Professional Engineer or other design professional. An original embossed or rubber stamp seal and original signature of the Professional Engineer is required and shall be affixed to any copy of this or other Document submitted to a governmental agency for approval or record. The engineering firms associated with this document are listed above as Consultants.

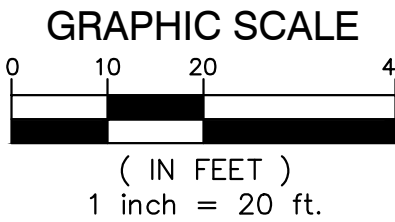
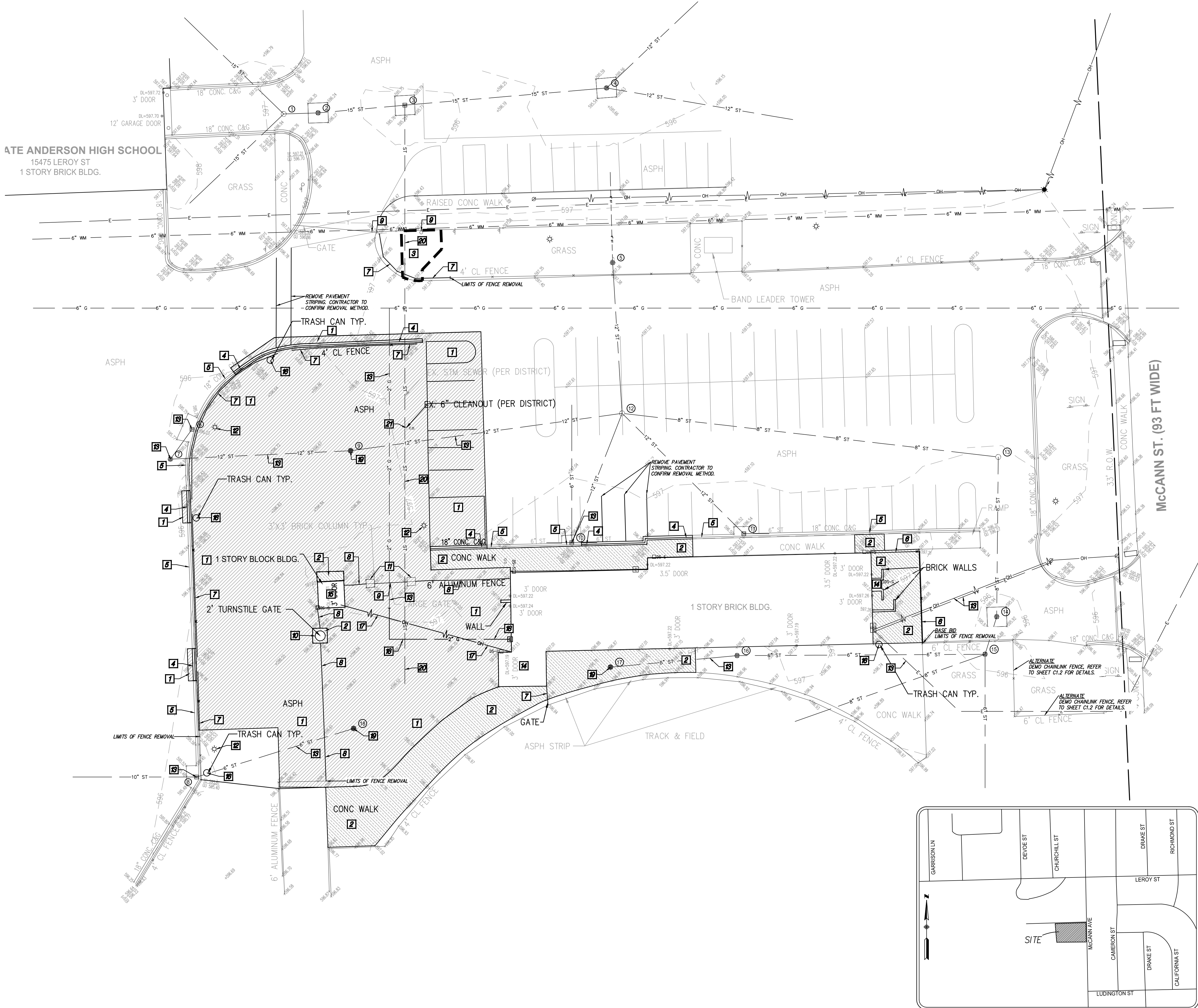
REGISTRATION SEALS

COPYRIGHT

© The "architectural work" displayed on these documents is owned exclusively by TMP Architecture, Inc. and may not be used for any purpose without their involvement or express written consent.

PROJECT TITLE  
**Anderson HS Field House Site Improvements**  
PROJECT NO.  
**20035E**  
DRAWING NO.  
**TS.1**





**SHEET INDEX**

- C1.1 - DEMOLITION PLAN
- C1.2 - DEMOLITION PLAN - ALTERNATE
- C2.1 - UTILITY PLAN
- C3.1 - PAVING PLAN
- C3.2 - PAVING PLAN - ALTERNATE
- C3.3 - DETAILS
- C4.1 - GRADING PLAN
- C5.1 - SOIL EROSION AND SEDIMENTATION CONTROL PLAN
- C5.2 - SOIL EROSION AND SEDIMENTATION CONTROL DETAILS
- C6.1 - TOPOGRAPHICAL SURVEY
- C7.1 - CITY OF SOUTHGATE STANDARD STORM SEWER DETAILS

**DEMOLITION NOTES**

- 1 REMOVE ASPHALT PAVEMENT TO FULL DEPTH. SAWCUT FULL DEPTH WHERE NEW PAVEMENT WILL BE PLACED ADJACENT TO EXISTING PAVEMENT. EXCAVATE EXISTING AGGREGATE BASE AND SUBGRADE AS NECESSARY TO INSTALL NEW PAVEMENT SECTION AS SHOWN ON THE PAVING PLANS, INCLUDING NEW AGGREGATE BASE.
  - 2 REMOVE CONCRETE PAVEMENT TO FULL DEPTH. SAWCUT FULL DEPTH TO NEAREST JOINT WHERE NEW PAVEMENT WILL BE PLACED ADJACENT TO EXISTING PAVEMENT.
  - 3 CLEAR AND GRUB TO THE LIMITS SHOWN. INCLUDE REMOVAL OF ALL SIGNS, POSTS, FOOTINGS, GRAVEL, BRUSH, SHRUBS, GRASS, AND TREES NOT INDICATED FOR PROTECTION, INCLUDING ROOTS. STRIP TOPSOIL AND STOCKPILE ON SITE IN DESIGNATED LOCATION.
  - 4 REMOVE CONCRETE CURB AND GUTTER, SAWCUT FULL DEPTH TO NEAREST JOINT, WHERE SHOWN. REMOVAL LIMITS TO BE FIELD VERIFIED BY ENGINEER.
  - 5 PROTECT EXISTING CONCRETE CURB AND GUTTER TO REMAIN.
  - 6 REMOVE AND SALVAGE FENCE MESH. PROTECT POSTS IN PLACE. FENCE MESH TO BE REATTACHED FOLLOWING PAVING & GRADING OPERATIONS.
  - 7 REMOVE AND DISPOSE OF EXISTING CHAIN LINK FENCE, INCLUDING ALL GATES, POSTS AND FOOTINGS.
  - 8 REMOVE AND SALVAGE EXISTING ORNAMENTAL FENCE, INCLUDING ALL GATES AND HARDWARE. DISPOSE OF POSTS AND FOOTINGS.
  - 9 PROTECT EXISTING FENCE TO REMAIN, INCLUDING ALL GATES, POSTS, AND FOOTINGS.
  - 10 REMOVE AND SALVAGE EXISTING TURNSTILE GATE, INCLUDING ALL POSTS AND FOOTINGS.
  - 11 PROTECT EXISTING COLUMNS TO REMAIN.
  - 12 PROTECT EXISTING LIGHT POLES TO REMAIN, INCLUDING BASES AND FOOTINGS.
  - 13 PROTECT EXISTING UTILITIES AND UTILITY STRUCTURES TO REMAIN.
  - 14 PARTIAL BUILDING REMOVAL. REFER TO ARCHITECTURAL PLANS FOR DETAILS.
  - 15 FULL DEMOLITION OF TICKET BOOTH. REFER TO ARCHITECTURAL PLANS FOR DETAILS.
  - 16 REMOVE AND SALVAGE EXISTING TRASH CANS. STORE IN ON SITE LOCATION AND RESET UPON COMPLETION OF CONSTRUCTION. COORDINATE WITH OWNER FOR LOCATIONS.
  - 17 REMOVE EXISTING OVERHEAD ELECTRICAL LINES. REFER TO ELECTRICAL PLANS FOR DEMOLITION REQUIREMENTS.
  - 18 REMOVE AND RELOCATE GAS SERVICE. GAS TO BE REMOVED BY UTILITY OWNER. COORDINATE CONSTRUCTION OPERATIONS WITH GAS COMPANY RELOCATION EFFORTS.
  - 19 ADJUST EXISTING UTILITY STRUCTURE. REMOVE AND REPLACE FRAME AND COVER. REFER TO UTILITY PLAN FOR NEW RIM ELEVATIONS AND FRAME AND COVER SPECIFICATIONS.
  - 20 CONTRACTOR TO PROVIDE EXPLORATORY EXCAVATION AND FIELD VERIFY IF STORM SEWER PIPE IS IN PLACE. IF SO, PROTECT EXISTING PIPE TO REMAIN.
  - 21 CONTRACTOR TO ADJUST EXISTING 6\"/>
- ALL DEPRESSIONS CREATED BY DEMOLITION PROCEDURES SHALL BE BACKFILLED WITH CLASS II FILL MATERIAL, IN 8\"/>
- CONTRACTOR IS RESPONSIBLE FOR DOING AN EARTHWORK CALCULATION FOR CUT AND FILL REQUIREMENTS, AND IS RESPONSIBLE FOR INCLUDING IMPORT AND EXPORT OF MATERIALS IN THEIR BID. ALL EXCESS MATERIAL (INCLUDING TOPSOIL, CLEAN FILL, AND WASTE MATERIAL) SHALL BE REMOVED FROM THE SITE.
- EXISTING SUPPORTED SLABS AT BUILDING ENTRY/DOORS TO REMAIN, UNLESS OTHERWISE DIRECTED. CONTRACTOR TO VERIFY LIMITS OF EXISTING SUPPORTED SLAB AND REMOVE ADJACENT WALKS AS SHOWN ON PLANS.
- CONTRACTOR TO PROTECT EXISTING WALKS, PAVEMENT, CURBS, GUTTERS, WALLS, FENCES, GATES, LANDSCAPING AND TREES TO REMAIN DURING CONSTRUCTION.

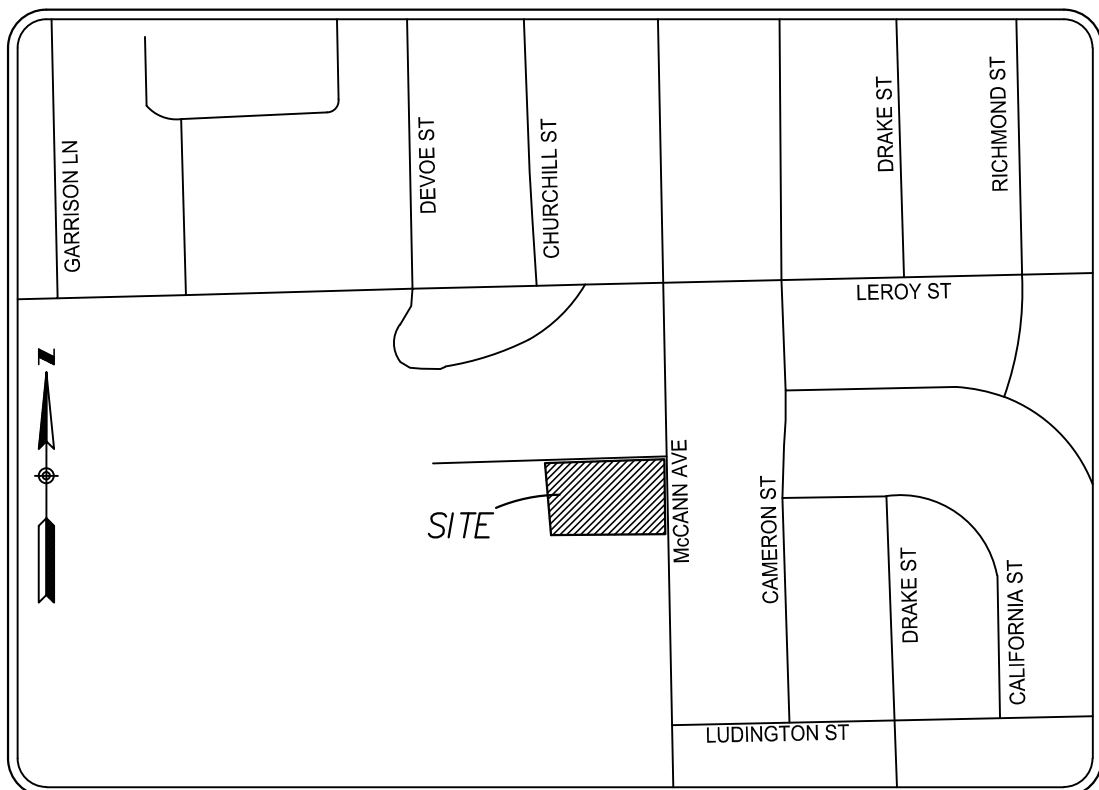
**SURVEY NOTES**

- TOPOGRAPHIC AND/OR BOUNDARY SURVEY, INCLUDING PROPERTY LINES, LEGAL DESCRIPTION, EXISTING UTILITIES, SITE TOPOGRAPHY WITH SPOT ELEVATIONS, OUTSTANDING PHYSICAL FEATURES AND EXISTING STRUCTURE LOCATIONS MAY BE BASED ON RECORD DATA NOT MEASURED IN THE FIELD.
- THE CONTRACTOR IS RESPONSIBLE FOR CONFIRMING ALL INFORMATION SHOWN ON THIS SURVEY AND NOTIFYING THE ENGINEER IMMEDIATELY OF ANY DISCREPANCIES.
- CONTRACTOR SHALL UTILIZE A PRIVATE UTILITY LOCATOR TO STAKE PUBLIC AND PRIVATE UTILITY LOCATIONS PRIOR TO START OF CONSTRUCTION. IT IS THE CONTRACTORS RESPONSIBILITY, AT NO COST TO THE PROJECT, TO REPAIR OR REPLACE ANY DAMAGE CAUSED TO EXISTING UTILITIES.
- CONTRACTOR SHALL CONTACT MISS DIG (811) THREE WORKING DAYS PRIOR TO THE START OF CONSTRUCTION FOR STAKING OF UTILITIES.

**OWNER**

SOUTHGATE COMMUNITY SCHOOLS  
13940 LEROY ST.  
SOUTHGATE, MI 48195  
PHONE: (734) 246-4600  
FAX: (734) 283-6791

**LOCATION MAP**  
NOT TO SCALE



**REGISTRATION SEAL**

**CONSULTANT**



905 South Blvd. East  
Rochester Hills, MI 48307  
Phone: (248) 844-5400  
Fax: (248) 844-5404

www.sda-eng.com  
(800) 598-1600

**PROJECT TITLE**

Anderson High School  
Field House  
Site Improvements

Southgate Community Schools  
Southgate, Michigan

**DRAWING TITLE**

Demolition Plan

**ISSUE DATES**

02-07-2024 CONSTRUCTION DOCUMENTS

**DATE ISSUED FOR:**

DRAWN JC

CHECKED NB

APPROVED NB

**PROJECT NO.**

**TMP 20035E**  
**SD NP23142**

**DRAWING NO.**

**C1.1**



Plotted: Feb. 7, 2024, 11:35 AM by user: 9114 -- Show: 2/7/2024 by user: 9114  
N: NP\ULD Projects\NP23142 -- Southgate Schools -- Anderson Fieldhouse\UNC\NP23142DEN-ALT.dwg



### DEMOLITION NOTES

1

REMOVE ASPHALT PAVEMENT TO FULL DEPTH. SAWCUT FULL DEPTH WHERE NEW PAVEMENT WILL BE PLACED ADJACENT TO EXISTING PAVEMENT. EXCAVATE EXISTING AGGREGATE BASE AND SUBGRADE, AS NECESSARY TO INSTALL NEW PAVEMENT SECTION AS SHOWN ON THE PAVING PLANS, INCLUDING NEW AGGREGATE BASE.

2

REMOVE CONCRETE PAVEMENT TO FULL DEPTH. SAWCUT FULL DEPTH TO NEAREST JOINT WHERE NEW PAVEMENT WILL BE PLACED ADJACENT TO EXISTING PAVEMENT.

3

CLEAR AND GRUB TO THE LIMITS SHOWN. INCLUDE REMOVAL OF ALL SIGNS, POSTS, FOOTINGS, GRAVEL, BRUSH, SHRUBS, GRASS, AND TREES NOT INDICATED FOR PROTECTION, INCLUDING ROOTS. STRIP TOPSOIL AND STOCKPILE ON SITE IN DESIGNATED LOCATION.

4

REMOVE CONCRETE CURB AND GUTTER. SAWCUT FULL DEPTH TO NEAREST JOINT, WHERE SHOWN. REMOVAL LIMITS TO BE FIELD VERIFIED BY ENGINEER.

5

PROTECT EXISTING CONCRETE CURB AND GUTTER TO REMAIN.

6

REMOVE AND SALVAGE FENCE MESH. PROTECT POSTS IN PLACE. FENCE MESH TO BE REATTACHED FOLLOWING PAVING & GRADING OPERATIONS.

7

REMOVE AND DISPOSE OF EXISTING CHAIN LINK FENCE, INCLUDING ALL GATES, POSTS AND FOOTINGS.

8

REMOVE AND SALVAGE EXISTING ORNAMENTAL FENCE, INCLUDING ALL GATES AND HARDWARE. DISPOSE OF POSTS AND FOOTINGS.

9

PROTECT EXISTING FENCE TO REMAIN, INCLUDING ALL GATES, POSTS, AND FOOTINGS.

10

REMOVE AND SALVAGE EXISTING TURNSTILE GATE, INCLUDING ALL POSTS AND FOOTINGS.

11

PROTECT EXISTING COLUMNS TO REMAIN.

12

PROTECT EXISTING LIGHT POLES TO REMAIN, INCLUDING BASES AND FOOTINGS.

13

PROTECT EXISTING UTILITIES AND UTILITY STRUCTURES TO REMAIN.

14

PARTIAL BUILDING REMOVAL. REFER TO ARCHITECTURAL PLANS FOR DETAILS.

15

FULL DEMOLITION OF TICKET BOOTH. REFER TO ARCHITECTURAL PLANS FOR DETAILS.

16

REMOVE AND SALVAGE EXISTING TRASH CANS. STORE IN ON SITE LOCATION AND RESET UPON COMPLETION OF CONSTRUCTION. COORDINATE WITH OWNER FOR LOCATIONS.

17

REMOVE EXISTING OVERHEAD ELECTRICAL LINES. REFER TO ELECTRICAL PLANS FOR DEMOLITION REQUIREMENTS.

18

REMOVE AND RELOCATE GAS SERVICE. GAS TO BE REMOVED BY UTILITY OWNER. COORDINATE CONSTRUCTION OPERATIONS WITH GAS COMPANY RELOCATION EFFORTS.

19

ADJUST EXISTING UTILITY STRUCTURE. REMOVE AND REPLACE FRAME AND COVER. REFER TO UTILITY PLAN FOR NEW RM ELEVATIONS AND FRAME AND COVER SPECIFICATIONS.

20

CONTRACTOR TO PROVIDE EXPLORATORY EXCAVATION AND FIELD VERIFY IF STORM SEWER PIPE IS IN PLACE. IF SO, PROTECT EXISTING PIPE TO REMAIN.

21

CONTRACTOR TO ADJUST EXISTING 6" CLEANOUT COVER TO MATCH FINISH GRADE OF SURROUNDING PROPOSED CONCRETE.

ALL DEPRESSIONS CREATED BY DEMOLITION PROCEDURES SHALL BE BACKFILLED WITH CLASS II FILL MATERIAL, IN 8" LIFTS COMPACTED TO 95% OF MAXIMUM UNIT WEIGHT, UP TO PROPOSED SUBGRADE.

CONTRACTOR IS RESPONSIBLE FOR DOING AN EARTHWORK CALCULATION FOR CUT AND FILL REQUIREMENTS, AND IS RESPONSIBLE FOR INCLUDING IMPORT AND EXPORT OF MATERIALS IN THEIR BID. ALL EXCESS MATERIAL (INCLUDING TOPSOIL, CLEAN FILL, AND WASTE MATERIAL) SHALL BE REMOVED FROM THE SITE.

EXISTING SUPPORTED SLABS AT BUILDING ENTRY/DOORS TO REMAIN, UNLESS OTHERWISE DIRECTED. CONTRACTOR TO VERIFY LIMITS OF EXISTING SUPPORTED SLAB AND REMOVE ADJACENT WALKS AS SHOWN ON PLANS.

CONTRACTOR TO PROTECT EXISTING WALKS, PAVEMENT, CURBS, GUTTERS, WALLS, FENCES, GATES, LANDSCAPING AND TREES TO REMAIN DURING CONSTRUCTION.

### SURVEY NOTES

1. TOPOGRAPHIC AND/OR BOUNDARY SURVEY, INCLUDING PROPERTY LINES, LEGAL DESCRIPTION, EXISTING UTILITIES, SITE TOPOGRAPHY WITH SPOT ELEVATIONS, OUTSTANDING PHYSICAL FEATURES AND EXISTING STRUCTURE LOCATIONS MAY BE BASED ON RECORD DATA NOT MEASURED IN THE FIELD.

2. THE CONTRACTOR IS RESPONSIBLE FOR CONFIRMING ALL INFORMATION SHOWN ON THIS SURVEY AND NOTIFYING THE ENGINEER IMMEDIATELY OF ANY DISCREPANCIES.

3. CONTRACTOR SHALL UTILIZE A PRIVATE UTILITY LOCATOR TO STAKE PUBLIC AND PRIVATE UTILITY LOCATIONS PRIOR TO START OF CONSTRUCTION. IT IS THE CONTRACTOR'S RESPONSIBILITY, AT NO COST TO THE PROJECT, TO REPAIR OR REPLACE ANY DAMAGE CAUSED TO EXISTING UTILITIES.

4. CONTRACTOR SHALL CONTACT MISS DIG (811) THREE WORKING DAYS PRIOR TO THE START OF CONSTRUCTION FOR STAKING OF UTILITIES.

TMP ARCHITECTURE INC.  
1391 WEST SQUARE LAKE ROAD  
BLOOMFIELD HILLS, MICHIGAN 48302  
PH: 248.388.4561 FX: 248.388.0023  
EA: INFO@TMP-ARCHITECTURE.COM

REGISTRATION SEAL

CONSULTANT

SPALDING  
DeDECKER  
Engineering and Surveying  
Excellence Since 1954

905 South Blvd. East  
Rochester Hills, MI 48307  
Phone: (248) 844-5400  
Fax: (248) 844-5404  
[www.sda-eng.com](http://www.sda-eng.com)  
(800) 598-1600

PROJECT TITLE

Anderson High School  
Field House  
Site Improvements  
Southgate Community Schools  
Southgate, Michigan

DRAWING TITLE

Demolition Plan -  
Alternate

ISSUE DATES

02-07-2024	CONSTRUCTION DOCUMENTS

DATE	ISSUED FOR:
DRAWN	JC
CHECKED	NB
APPROVED	NB

PROJECT NO.

TMP 20035E  
SD NP23142

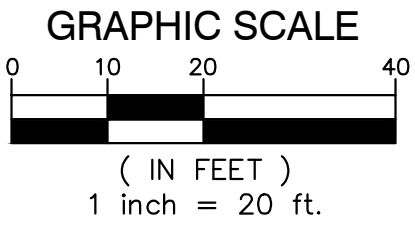
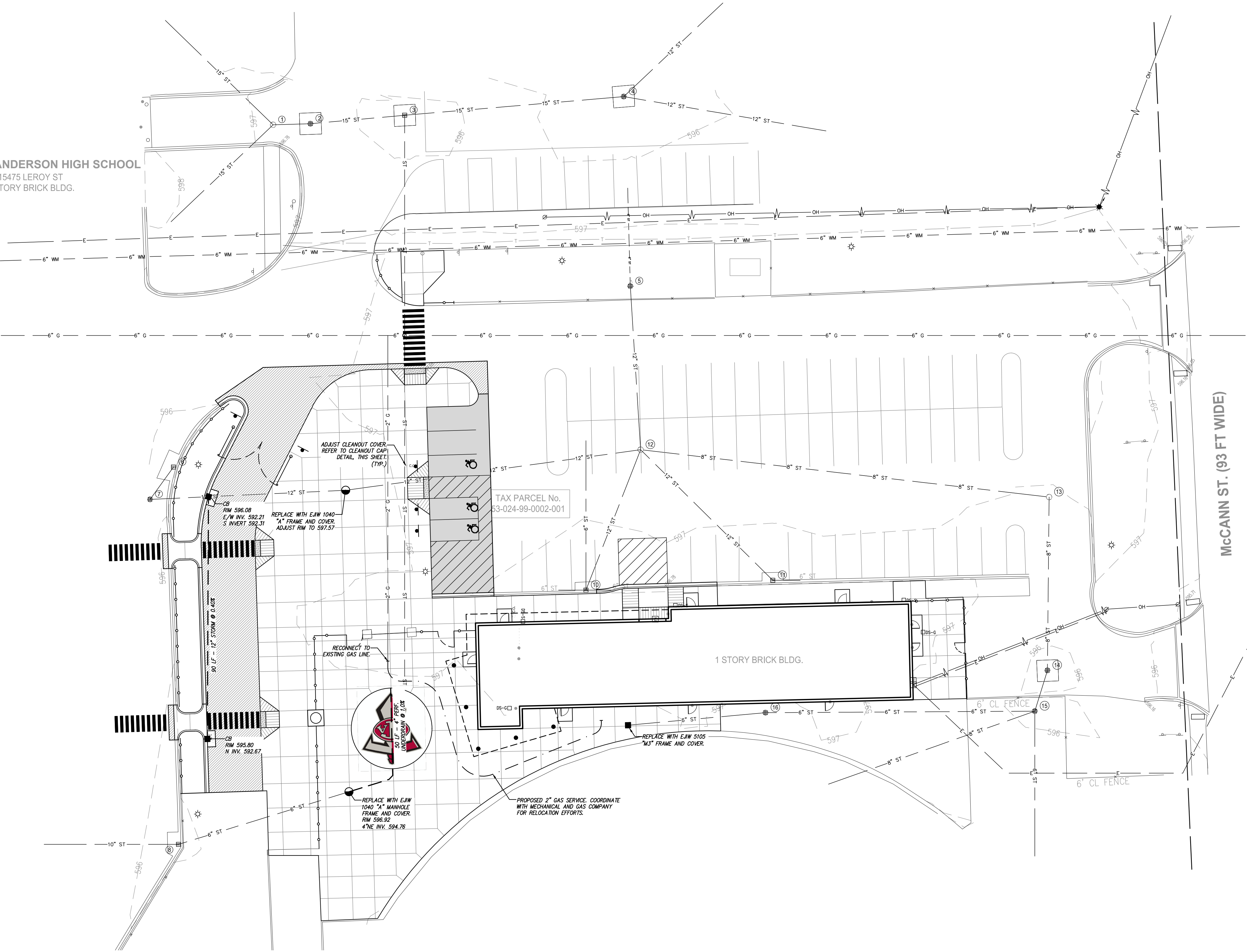
DRAWING NO.

C1.2

3 WORKING DAYS  
BEFORE YOU DIG  
CALL MISS DIG.  
1-800-482-7171  
For free location of public utility lines



ATE ANDERSON HIGH SCHOOL  
15475 LEROY ST  
1 STORY BRICK BLDG.

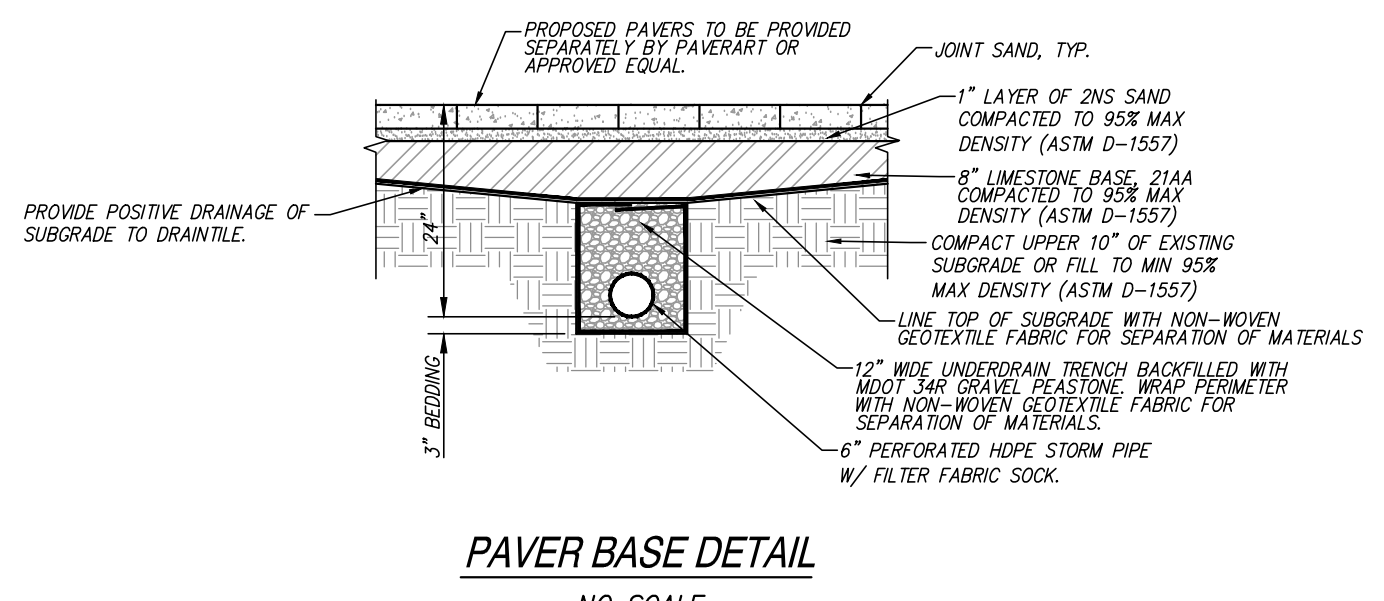
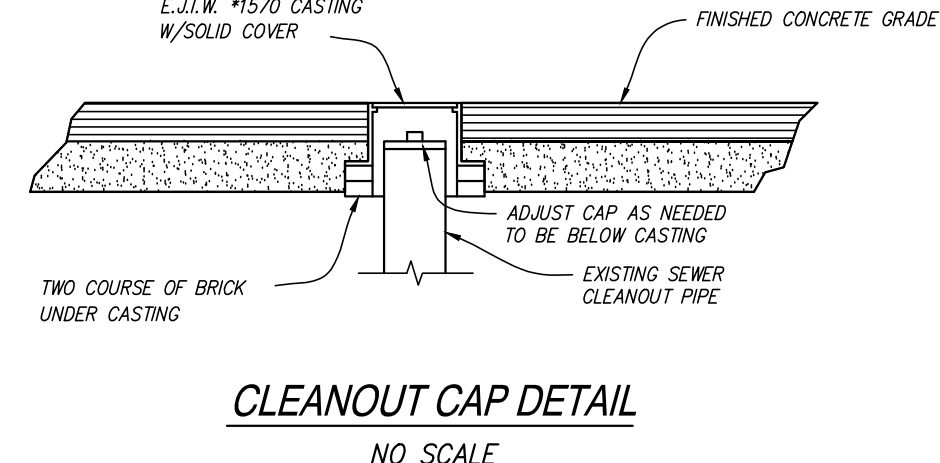
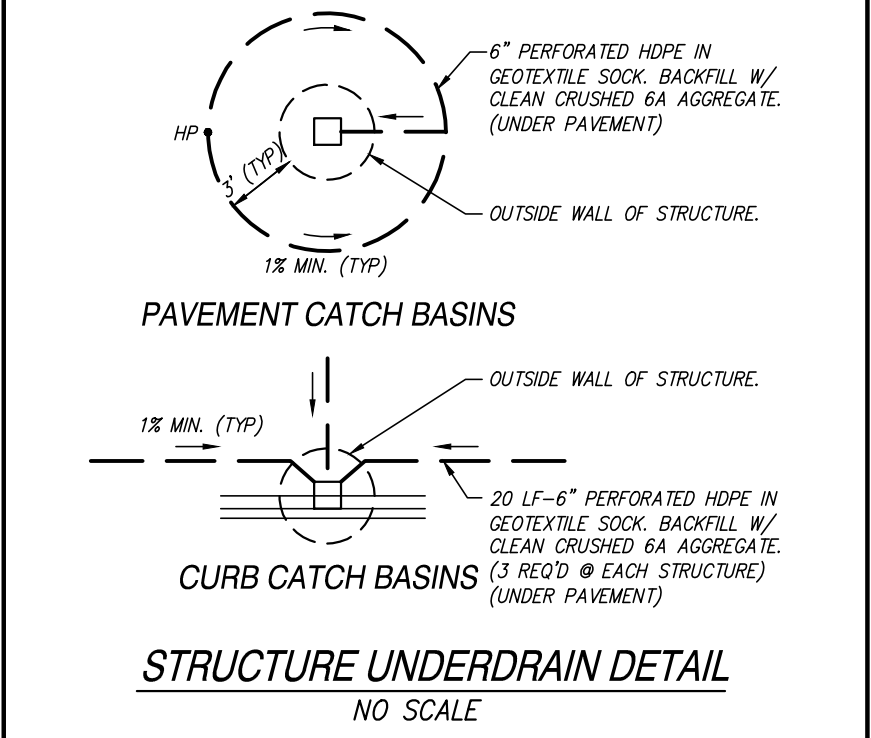
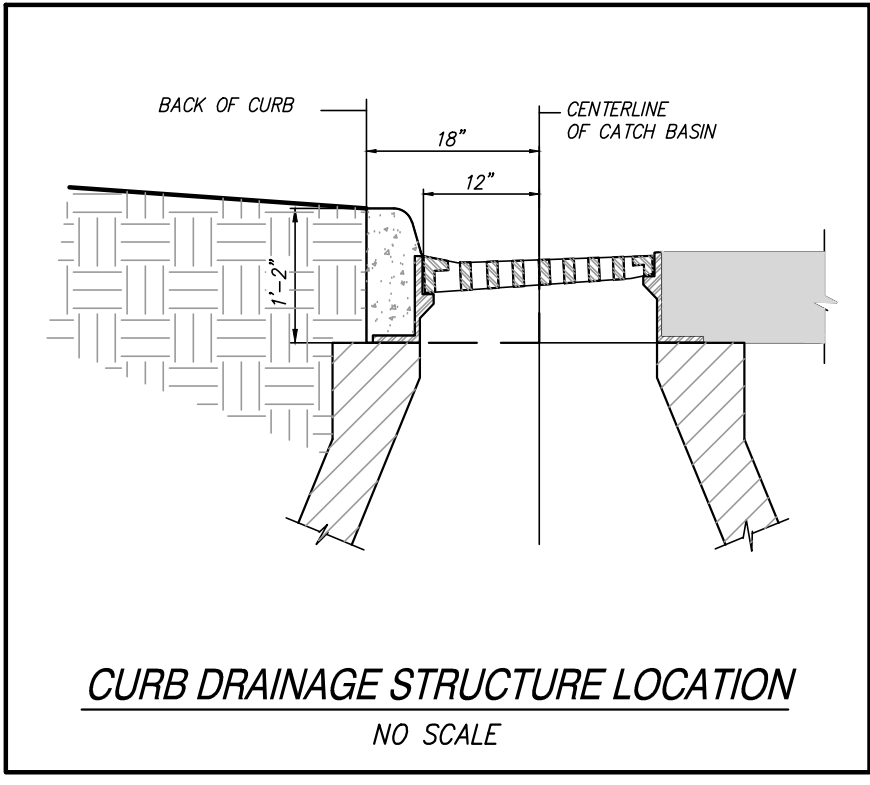


LEGEND	
--- PROPOSED WATERMAIN	● PROPOSED SAN MANHOLE (SAN)
--- PROPOSED SANITARY	● PROPOSED STORM MANHOLE (MH)
--- PROPOSED STORM SEWER	■ PROPOSED CATCH BASIN (CB)
--- PROPOSED GAS MAIN	▣ PROPOSED INLET (INL)
--- PROPOSED ELECTRIC	▣ PROPOSED END SECTION (ES)
--- PROPOSED HYDRANT	● PROPOSED FIELD CATCH BASIN (FCB) W/BEEHIVE COVER OR STANDPIPE (SP) W/ BAR GRATE COVER
--- PROPOSED GATE	② UTILITY CROSSING (SEE DATA TABLE)
⊗ VALVE & WELL (GVW)	CB --- STRUCT. TYPE
⊗ PROPOSED TAPPING SLEEVE, VALVE & WELL (TSVW)	2 --- STRUCT. NO.
STANDARD BITUMINOUS PAVEMENT	20
HEAVY-DUTY BITUMINOUS PAVEMENT	10 --- STRUCT. NO.
DEEP-STRENGTH BITUMINOUS PAVEMENT	XXX --- STRUCT. TYPE
CONCRETE PAVEMENT	
CONCRETE SIDEWALK	
MILL PAVEMENT	

- UTILITY NOTES**
- STORM SEWER 12" AND LARGER SHALL BE C76 CL IV (PREM./JT.) UNLESS OTHERWISE NOTED ON THE PLAN.
  - STORM SEWER 6" AND SMALLER SHALL BE PVC SDR 23.5. STORM SEWER GREATER THAN 6" THROUGH 10" SHALL BE PVC SDR 26.
  - ALL UTILITY TRENCHES THAT FALL WITHIN A 1'-0" INFLUENCE OF PAVEMENT AREAS SHALL BE BACKFILLED WITH CLASS 2 SAND AND COMPACTED TO 95% OF MAXIMUM DENSITY.
  - ALL UTILITIES SHALL BE INSTALLED IN ACCORDANCE WITH THE STANDARDS AND SPECIFICATIONS OF THE CITY OF SOUTHGATE.
  - ALL UTILITIES SHALL BE INSTALLED ON CLASS "B" BEDDING OR BETTER.
  - ALL UTILITIES SHALL BE PLACED AT LEAST 10' FROM OTHER UTILITIES, SIGNIFICANT TREES, AND FIXED STRUCTURES.
  - UNLESS OTHERWISE NOTED, ALL STORM SEWER STRUCTURES SHALL BE 4' DIAMETER (INLETS SHALL BE 2' DIAMETER). CONTRACTOR IS RESPONSIBLE FOR VERIFYING STRUCTURES SIZES IN RELATION TO PIPE SIZES AND ANGLES AND PROVIDING THEM BID ACCORDINGLY. UNLESS OTHERWISE INDICATED ON THE STANDARD DETAIL SHEETS CASTINGS SHALL BE: PWT: CATCH BASINS (WALKING SPACES) - E&W 5105 - "M3" ADA ACCESSIBLE PWT: CATCH BASINS (DRIVEWAYS) - E&W 5105 - "M1" (FRAMES WITH CURB BOXES WILL NOT BE ALLOWED) YARD CATCH BASINS - E&W 1040 - "02" MANHOLES - E&W 1040 - "A"
  - PLACEMENT OF EDGE DRAINS AND FINGER DRAINS AT ALL PAVEMENT CATCH BASINS IS REQUIRED. SEE STRUCTURE UNDERDRAIN DETAIL, THIS SHEET.
  - FOR CURB CATCH BASINS, SEE BASIN LOCATION DETAIL FOR BASIN STAKING RELATIVE TO THE CURB.
  - WHERE THESE PLANS DIFFER FROM THE STANDARD DETAILS OR STANDARD SPECIFICATIONS OF THE COMMUNITY, THE COMMUNITY REQUIREMENTS SHALL GOVERN.

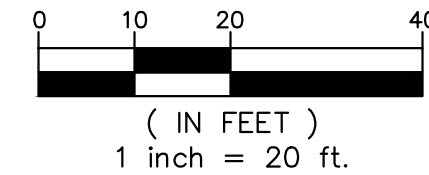
**STORMWATER NARRATIVE:**  
TOTAL DISTURBANCE IS UNDER 0.50 ACRES AND RESULTS IN A NET DECREASE OF SITE IMPERVIOUSNESS. THEREFORE, IN ACCORDANCE WITH M.C.W.R.C. STORMWATER REQUIREMENTS, NO POST CONSTRUCTION CONTROLS ARE REQUIRED.

**RIM ADJUSTMENT NOTE:**  
REMOVE EXISTING CASTING, COVER AND ADJUST MATERIALS FROM DRAINAGE STRUCTURE. SALVAGE CASTING AND COVER FOR REINSTALLATION AND PROVIDE NEW ADJUSTMENT BRICK/BLOCK/RINGS. REINSTALL ACCORDING TO STANDARD DETAILS (IF INCLUDED). PROTECT EXISTING UTILITY STRUCTURE TO REMAIN.





15475 LEROY ST  
1 STORY BRICK BLDG.



**TMP**  
ARCHITECTURE  
TMP ARCHITECTURE INC

1191 WEST SQUARE LAKE ROAD  
BLOOMFIELD HILLS MICHIGAN 48302  
PH 248.388.4561 FX 248.388.0223  
EM INFO@TMP-ARCHITECTURE.COM



**SPALDING  
DeDECKER**  
Engineering and Surveying  
Excellence Since 1954

905 South Blvd. East  
Rochester Hills, MI 48307  
Phone: (248) 844-5400  
Fax: (248) 844-5404  
  
www.sda-eng.com  
(800) 598-1600

PROJECT TITLE  
**Anderson High School  
Field House  
Site Improvements**

**Southgate Community Schools  
Southgate, Michigan**

DRAWING TITLE  
**Paving Plan**

02-07-2024 CONSTRUCTION DOCUMENTS

DATE: ISSUED FOR:

DRAWN 

CHECKED NR

APPROVED \_\_\_\_\_

PROJECT NO.

**TMP 20035E**  
**SD NP23142**

DRAWING NO.

### C3.1



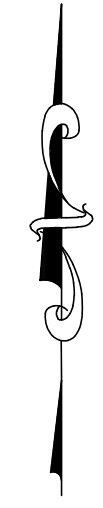
**3 WORKING DAYS  
BEFORE YOU DIG  
CALL MISS DIG.  
1-800-482-7171**

For free location of public utility lines

### A HIC SCA

Plotted: Feb 7, 2024, 1:20 PM by user: 9114 - Saved: 2/7/2024 by user: 9114  
N:\NP\NLD Projects\NP23142 - Southgate Schools - Anderson Fieldhouse\DWG\NP23142PAV.dwg





## LEGEND

— — — — —	PROPOSED WATERMAIN	●	PROPOSED SAN MANHOLE (SAN)
— — — — —	PROPOSED SANITARY	■	PROPOSED STORM MANHOLE (MH)
— — — — —	PROPOSED STORM SEWER	■	PROPOSED CATCH BASIN (CB)
— — — — —	PROPOSED GAS MAIN	■	PROPOSED INLET (NL)
— — — — —	PROPOSED ELECTRIC	■	PROPOSED END SECTION (ES)
●	PROPOSED HYDRANT	⊕	PROPOSED FIELD CATCH BASIN (FCB) W/ BREEZE COVER OR STANDARD (SP) W/ BAR GRATE COVER
⊗	PROPOSED GATE VALVE & WELL (GVW)		
⊗	PROPOSED TAPPING SLEEVE, VALVE & WELL (TSW)		

	STANDARD BITUMINOUS PAVEMENT		
	HEAVY-DUTY BITUMINOUS PAVEMENT	STORM STRUCTURE	
	DEEP-STRENGTH BITUMINOUS PAVEMENT	SANITARY SEWER STRUCTURE	
	CONCRETE PAVEMENT		
	CONCRETE SIDEWALK	WATERMAIN STRUCTURE	
	MILL PAVEMENT		

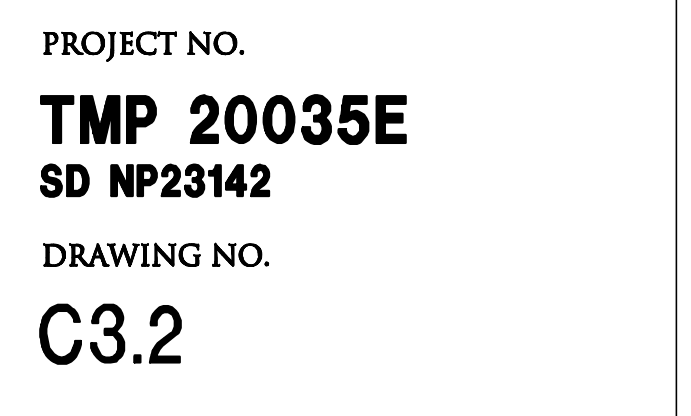
		UTILITY CROSSING (SEE DATA TABLE)
		— STRUCT. TYPE
		— STRUCT. NO.
		— STRUCT. NO.
		— STRUCT. TYPE

1. **GROUNDWORK AND PAVEMENT CONSTRUCTION SHALL BE PERFORMED IN ACCORDANCE WITH THE CURRENT MOST STANDARD SPECIFICATIONS FOR CONSTRUCTION UNLESS OTHERWISE NOTED IN THE FOLLOWING ITEMS.**
2. **REMOVE ANY EXISTING TOPSOIL, VEGETATION, TREES AND OTHER DELETTERIOUS MATERIALS TO EXPOSE THE SUBGRADE SOIL. THIS TOPSOIL SHALL BE COMPLETELY REMOVED.**
3. **EXCAVATE TO THE DEPTH OF THE FINAL SUBGRADE ELEVATION TO ALLOW FOR GRADE CHANGES TO THE SUBGRADE AND THE FINAL PAVEMENT SYSTEM.**
4. **THE TOP 12 INCHES OF THE EXPOSED SUBGRADE SHALL BE COMPACTED TO A DENSITY NO LESS THAN 95 PERCENT OF THE MAXIMUM DENSITY AS DETERMINED BY THE MODIFIED PROCTOR (ASTM D 1557-91).**
5. **THE FINAL SUBGRADE SHALL BE THOROUGHLY PROFFERLOADED UNDER THE OBSERVATION OF A GEOTECHNICAL/PAVEMENT ENGINEER. LOOSE OR YIELDING AREAS WHICH CANNOT BE THOROUGHLY STABILIZED SHALL BE REMOVED AND REPLACED WITH ENGINEERED FILL OR AS DICTATED BY FIELD CONDITIONS.**
6. **THE AGGREGATE BASE SHALL BE COMPACTED TO A DENSITY NO LESS THAN 95 PERCENT OF THE MAXIMUM DENSITY AS DETERMINED BY THE MODIFIED PROCTOR (ASTM D 1557-91). THE BASE SHALL EXTEND A MINIMUM OF 1' FOOT BEYOND THE PAVED EDGE.**
7. **ALL BITUMINOUS MATERIAL SHALL BE COMPACTED TO A DENSITY NO LESS THAN 97 PERCENT OF THE MAXIMUM DENSITY AS DETERMINED BY THE MARSHALL METHOD.**
8. **A BOND COAT OF SS-H EXEMSLER IS REQUIRED BETWEEN THE LEVELING COURSE AND THE NEXT COURSE. SEVEN (7) HOURS HAVE ELAPSED BETWEEN PLACEMENT OF THE BITUMINOUS COURSES OR THE SURFACE OF THE PAVEMENT HAS BEEN CONTAMINATED WITH OIL, DIRT OR FOREIGN MATERIAL. A BOND COAT BEING APPLIED IN ANY OTHER MANNER OTHER THAN AT A RATE OF 0.1 GALLONS/SY. IN THE EVENT A BOND COAT IS NOT REQUIRED, THE LEVELING COURSE MAY REQUIRE LOCALIZED BROOM CLEANING.**
9. **PERFORMANCE GRADE PG64-22 ASPHALT CEMENT SHALL BE USED IN THE PRODUCTION OF ALL BITUMINOUS MIXTURES. RECOMMENDED STANDARD PAVEMENT (RAP) SHALL BE ALLOWED ONLY TO THE EXTENT OF THE CURRENT MOST STANDARD SPECIFICATIONS FOR CONSTRUCTION, UNLESS NOTED ON THE PROJECT DETAILS.**
10. **CONSTRUCTION TRAFFIC SHALL BE MINIMIZED ON THE NEW PAVEMENT. IF CONSTRUCTION TRAFFIC IS ANTICIPATED ON THE PAVEMENT STRUCTURE, THE PLACEMENT OF THE FINAL LIFT OF UNPAVED UNITS SHALL BE COMPLETED WITHIN SEVEN (7) HOURS AFTER ACTIVITIES HAVE BEEN COMPLETED. THIS ACTION WILL ALLOW REPAIR OF LOCALIZED FAILURE, IF ANY DOES OCCUR, AS WELL AS REDUCE LOAD DAMAGE ON THE PAVEMENT SYSTEM. THE CONTRACTOR IS RESPONSIBLE FOR REPAIR TO ANY DAMAGED SECTION RESULTING FROM CONSTRUCTION ACTIVITY.**
11. **TAPER CURB HEIGHT DOWN TO ZERO HEIGHT IN FIVE FEET AT ALL CURB ENDS UNLESS OTHERWISE NOTED ON THE PLAN.**
12. **CURB AND GUTTER SECTION IS ADJACENT TO A BARRIER FIVE RAMP, DROB CURB HEIGHT BE MAXIMUM 1/4" ACROSS THE RAMP OPENS.**
13. **RESTRIPE PARKING LOTS AS SHOWN, USING 4" PAVEMENT MARKING - BLUE FOR BARRIER FIVE SPACES, YELLOW FOR STANDARD SPACES. IF ANY PARKING LAYOUT IS NOT INDICATED, AND THERE IS STRIPING PATTERN, THE CONTRACTOR SHALL BE RESPONSIBLE FOR THE PATTERN.**
14. **CONTRACTOR SHALL PROTECT EXISTING CURB, GUTTER, SIDEWALK, WALK, FENCES, AND ALL OTHER EXISTING SITE FEATURES NOT INDICATED FOR REMOVAL OR REHABILITATION.**
15. **PLACE EXPANSION JOINTS WHERE NEW CONCRETE PAVEMENT OR WALKS ABUT BUILDINGS WALLS (PROPOSED OR EXISTING), COLUMN WALLS OR BASES, CONCRETE FOUNDATIONS OR BASES, CURBS, OR EXISTING CONCRETE PAVEMENT. PLACE JOINT SEALANT ON ALL EXPANSION JOINTS.**
16. **CONTRACTOR TO CONSTRUCT CONSTRUCTION AND EXPANSION JOINTS IN ALL NEW CONCRETE PAVEMENT. CONSTRUCTION JOINTS SHALL BE TOOLED WHERE SIDEWALK WIDTH IS 8' OR LESS. JOINTS SHALL BE SPACED EVERY FOUR FEET. CONSTRUCTION JOINTS IF SPACING FOR 8' WIDE WALKS, BUT NOT MORE THAN 10' APART. PLACE EXPANSION JOINTS WITH JOINT SEALANT AT MAXIMUM 50' SPACING. CONTRACTOR SHALL GENERALLY MATCH THE JOINT PATTERNS FOR CONCRETE PAVEMENT WALKS SHOWN ON THE PLAN.**
17. **WHERE THESE PLANS OFFER FROM THE STANDARD DETAILS OR STANDARD SPECIFICATIONS OF THE CURRENT MOST STANDARD SPECIFICATIONS, THE CONTRACTOR SHALL OBSERVE THE**
18. **CONCRETE PAVEMENT SHALL MEET THE REQUIREMENTS FOR MDOT GRADE 4000 CONCRETE PER THE CURRENT MOST STANDARD SPECIFICATIONS FOR CONSTRUCTION.**

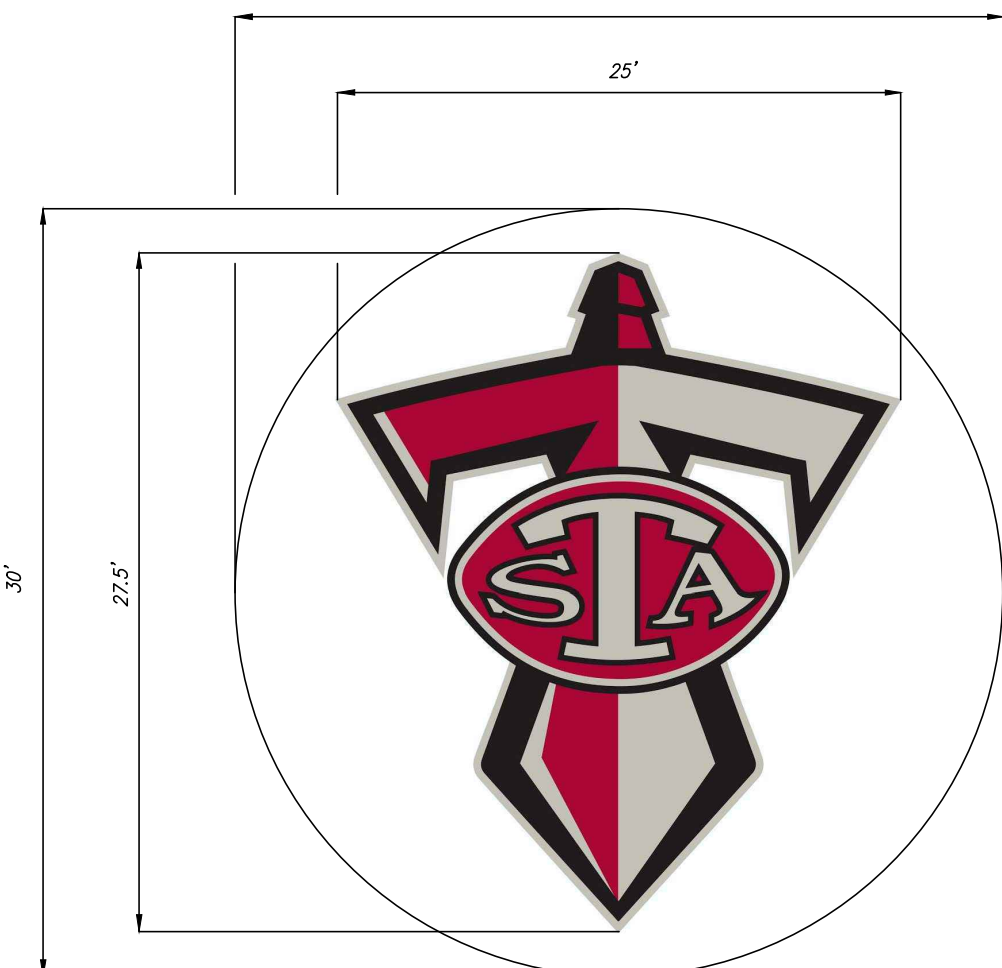
"AVO" - AUTHORIZED VEHICLES ONLY (R5-11)  
 "BF" - RESERVED PARKING BARRIER FREE ONLY (R7-8)  
 "BFV" - RESERVED PARKING BARRIER FREE ONLY VAN  
 ACCESS (R7-8 WITH R7-8P)

ALL SIGNAGE SHALL BE IN ACCORDANCE WITH THE CURRENT  
 M.M.U.T.C.D. AND THE MDOT TRAFFIC AND SAFETY SIGN  
 SUPPORT STANDARD PLANS.

 **3 WORKING DAYS  
BEFORE YOU DIG  
CALL MISS DIG.<sup>®</sup>  
1-800-482-7171**  
For free location of public utility lines

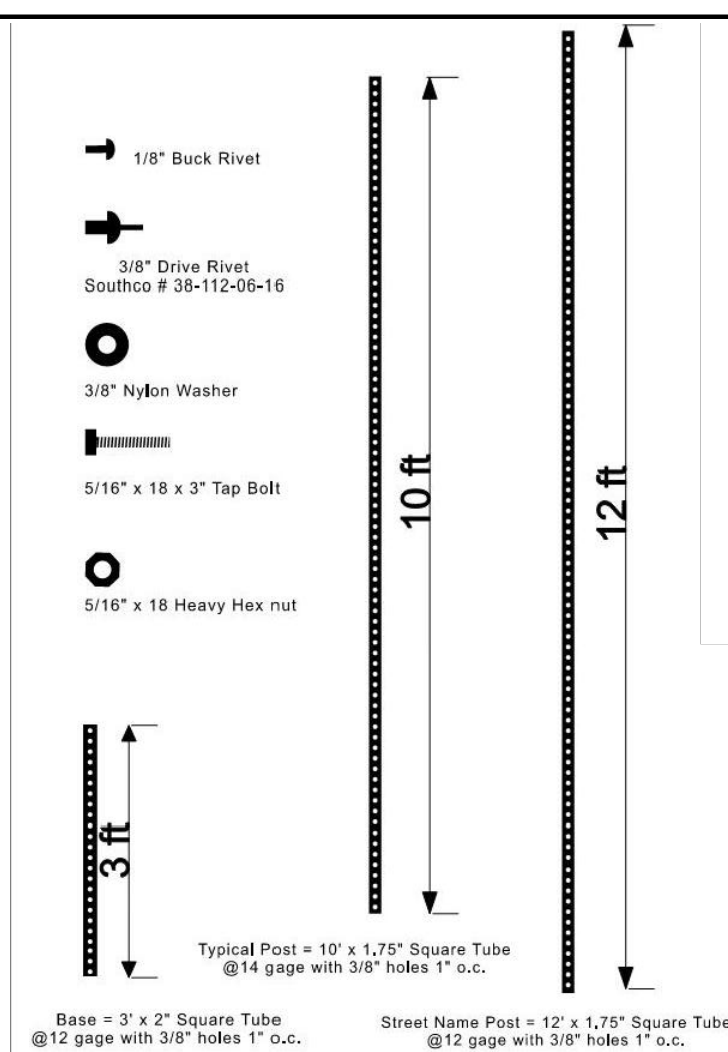






NOTE:  
PAVERARY TO PROVIDE PHYSICAL  
COLOR SAMPLES TO OWNER BEFORE  
PROCUREMENT OF PAVERS.  
CONTRACTOR TO COORDINATE WITH  
OWNER AND PAVERARY ON SEALANT  
OF PAVERS PRIOR TO INSTALLATION.

PAVER LOGO DETAIL  
NOT TO SCALE



Base is driven squarely  
into ground, exposing only  
the last two to three holes

post is slid into base 7-8 inches  
then perpendicular drive rivets  
(2) are used at top of base  
to pin post and base together

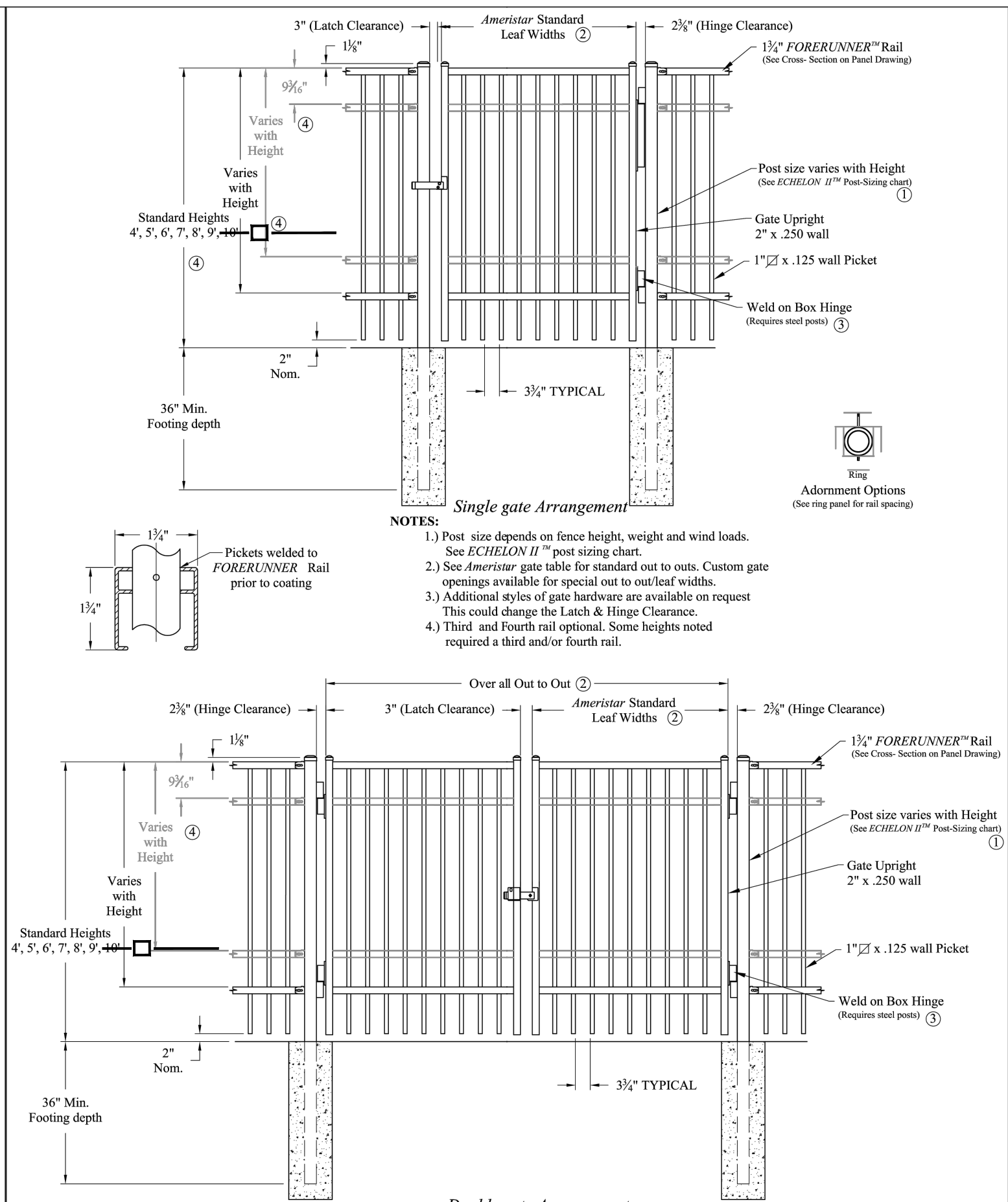
Grade

Bolt is placed 9 holes  
down from top of base  
(limits the amount of  
dirt entering the top of  
base when being driven)

DETAIL  
BARRIER FREE SIGN IN PAVEMENT DETAIL

INDUSTRIAL STRENGTH ALUMINUM				1555 N. Mingo Tulsa, OK 74116 1-888-333-3422 www.ameristarfence.com
ECHOLON II MAJESTIC 2/3/4-RAIL				
DR: NJB	SH: lof I	SCALE: DO NOT SCALE	REV: e	
CK: BS	Date	2-07-12	REV: d	

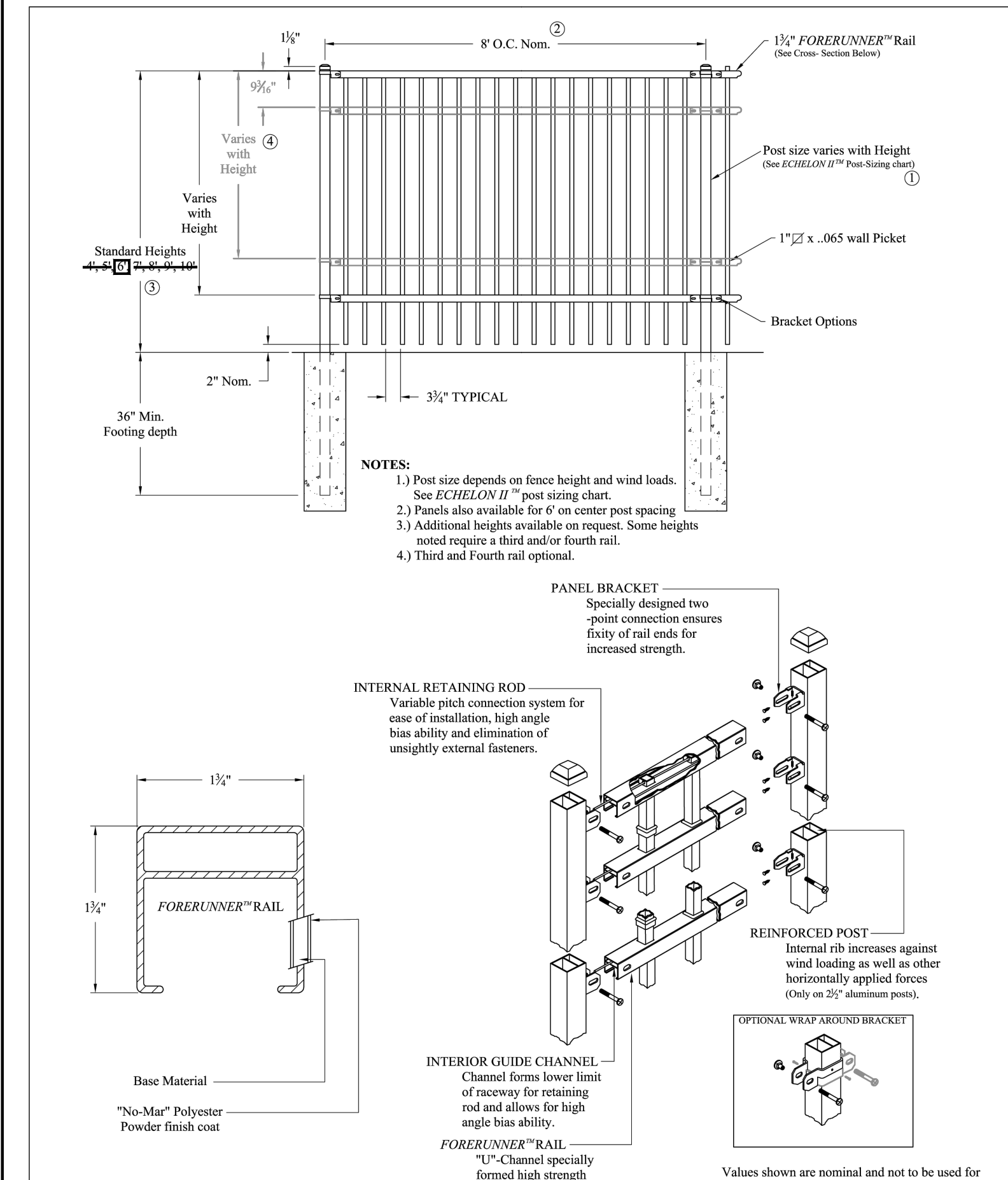
SECTION  
AMERISTAR (OR APPROVED EQUAL) 6' ORNAMENTAL FENCE



Double gate Arrangement

INDUSTRIAL STRENGTH ALUMINUM				1555 N. Mingo Tulsa, OK 74116 1-888-333-3422 www.ameristarfence.com
ECHOLON II MAJESTIC 2/3/4-RAIL SGL & DBL GATE				
DR: NJB	SH: lof I	SCALE: DO NOT SCALE	REV: d	
CK: BS	Date	2-07-12	REV: e	

SECTION  
AMERISTAR (OR APPROVED EQUAL) 6' ORNAMENTAL FENCE



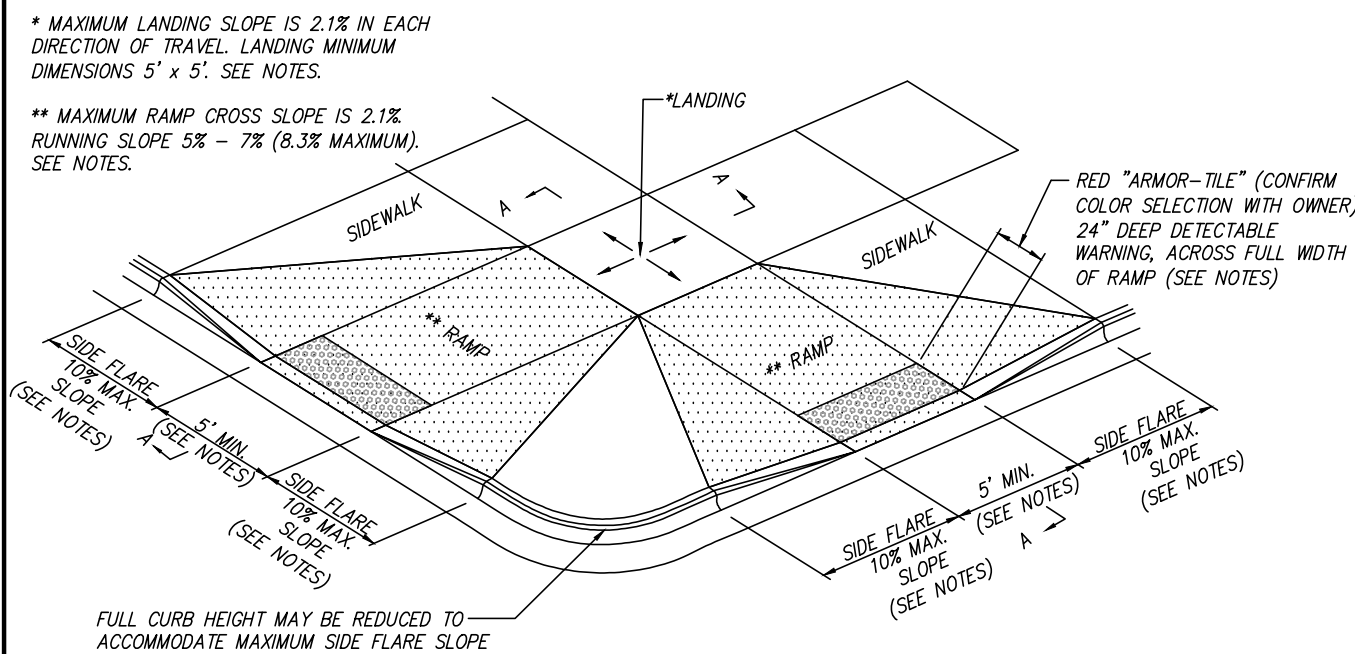
- NOTES:
- 1.) Post size depends on fence height and wind loads. See ECHOLON II "Post Sizing chart".
  - 2.) Panels also available for 6' on center post spacing.
  - 3.) Additional heights available on request. Some heights noted require a third and/or fourth rail.
  - 4.) Third and Fourth rail optional.

- NOTES:
- 1.) Post size depends on fence height, weight and wind loads. See ECHOLON II "Post Sizing chart".
  - 2.) See Ameristar gate table for standard out to outs. Custom gate openings available for special out to out/leaf widths.
  - 3.) Additional styles of gate hardware are available on request. This could change the Latch & Hinge Clearance.
  - 4.) Third and Fourth rail optional. Some heights noted required a third and/or fourth rail.

DOUBLE BARRIER GATE  
LATCH DETAIL

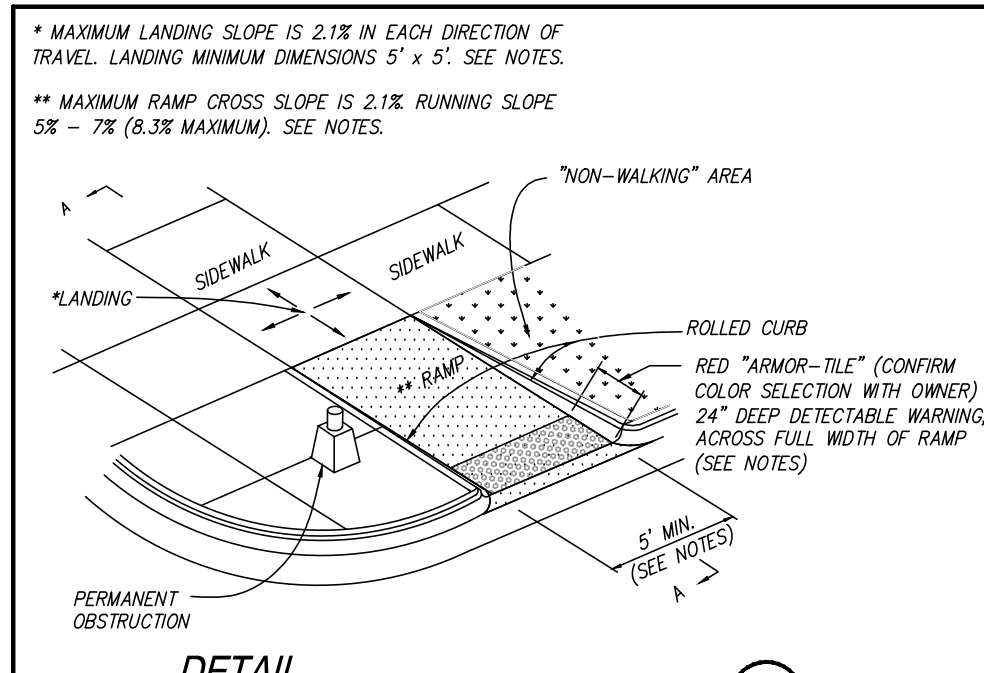
BARRIER GATE AND CONCRETE POST DETAIL

- \* MAXIMUM LANDING SLOPE IS 2.1% IN EACH DIRECTION OF TRAVEL. LANDING MINIMUM DIMENSIONS 5' x 5'. SEE NOTES.
- \*\* MAXIMUM RAMP CROSS SLOPE IS 2.1% RUNNING SLOPE 5% - 7% (8.3% MAXIMUM). SEE NOTES.

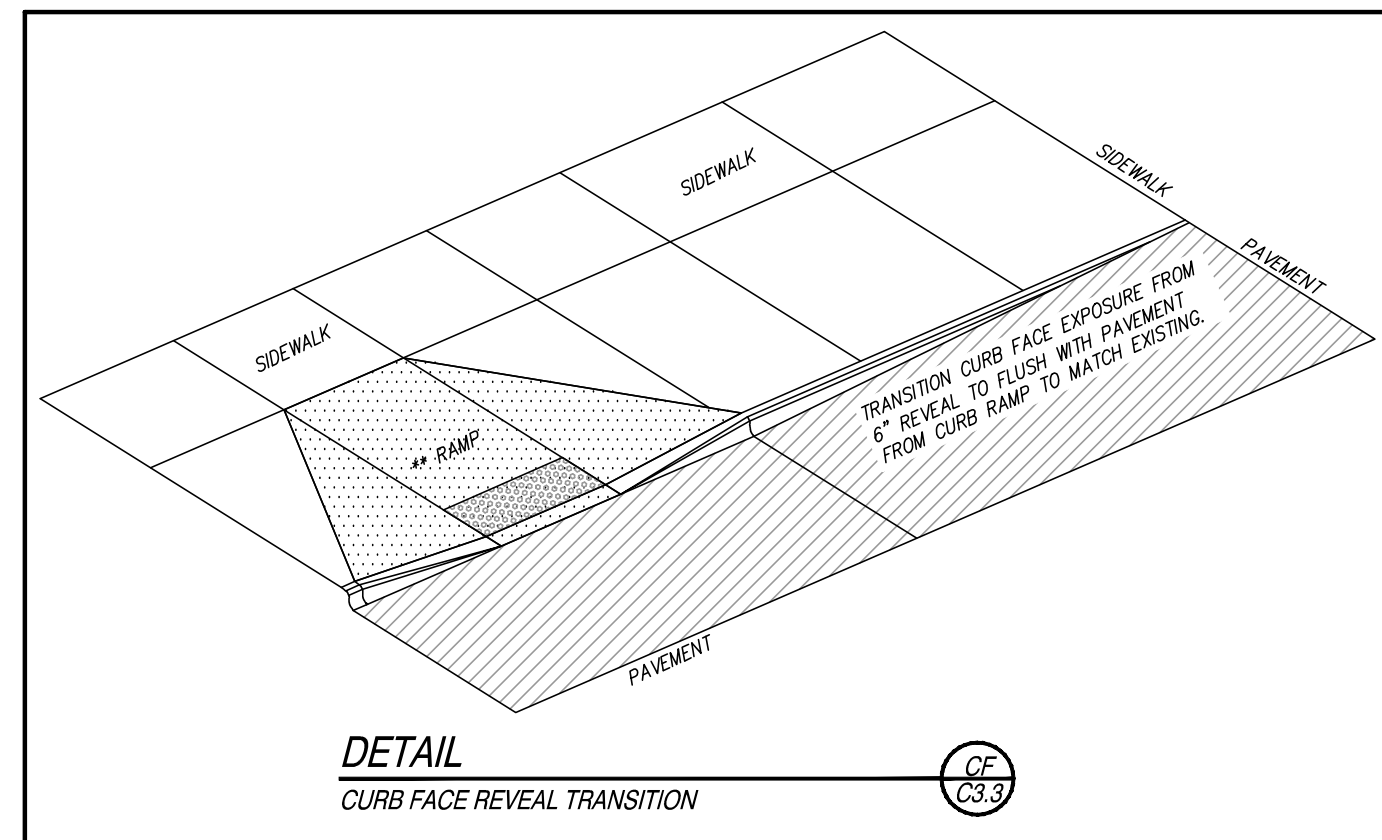


DETAIL  
MDOT DETAIL R-28-K MODIFIED  
SIDEWALK RAMP TYPE F (FLARED SIDES, TWO RAMP SHOWN)

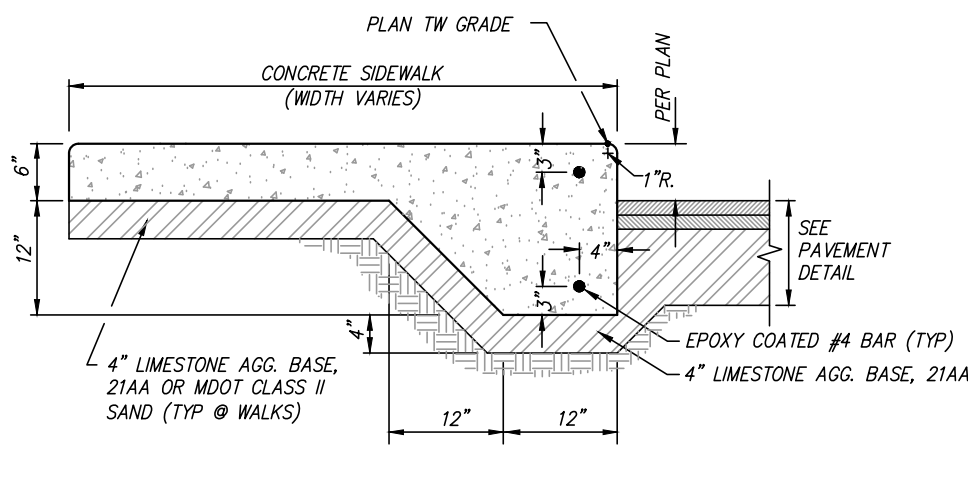
- \* MAXIMUM LANDING SLOPE IS 2.1% IN EACH DIRECTION OF TRAVEL. LANDING MINIMUM DIMENSIONS 5' x 5'. SEE NOTES.
- \*\* MAXIMUM RAMP CROSS SLOPE IS 2.1% RUNNING SLOPE 5% - 7% (8.3% MAXIMUM). SEE NOTES.



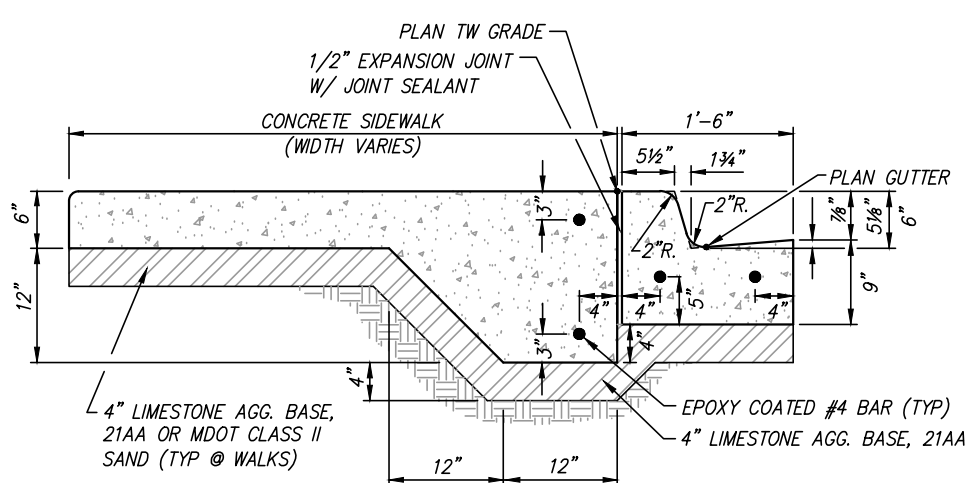
DETAIL  
MDOT DETAIL R-28-K MODIFIED  
SIDEWALK RAMP TYPE R (ROLLED SIDES)



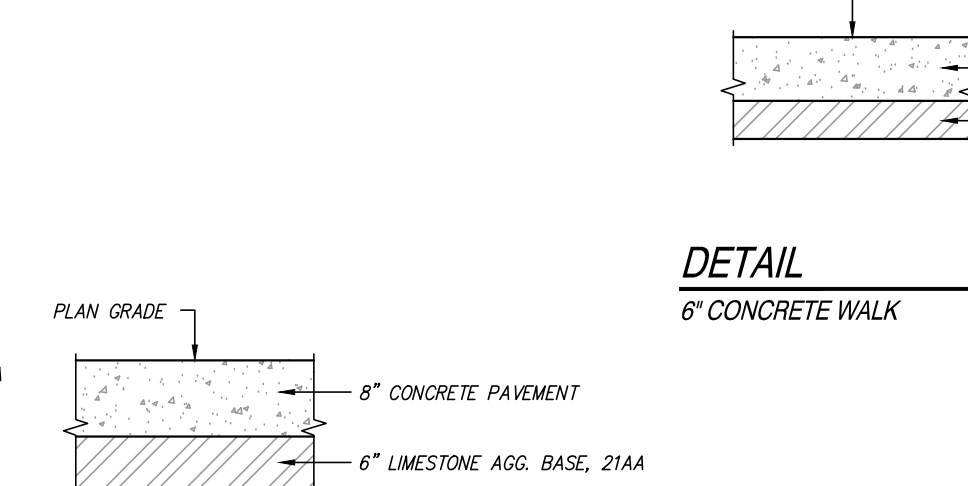
DETAIL  
CURB FACE REVEAL TRANSITION



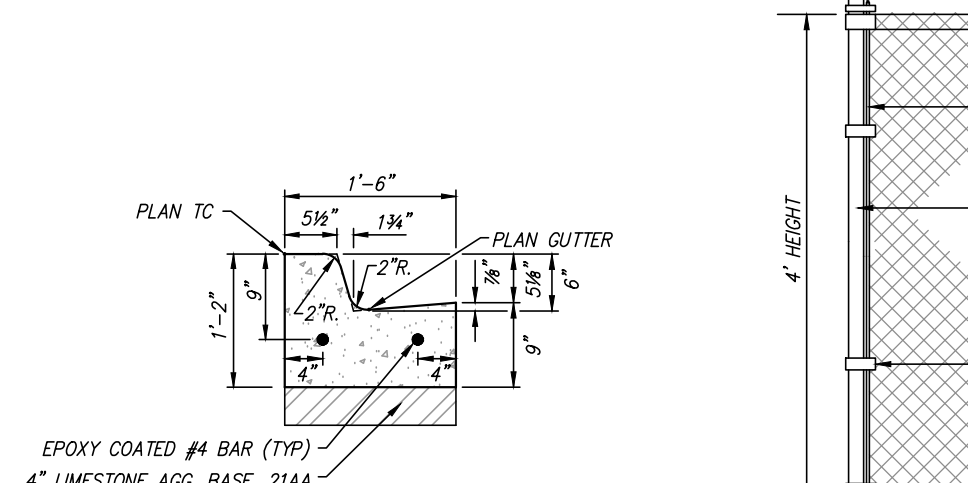
SECTION  
INTEGRAL WALK/CURB



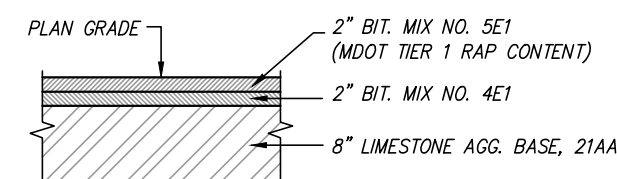
SECTION  
WALK/CURB & GUTTER STANDARD PAN



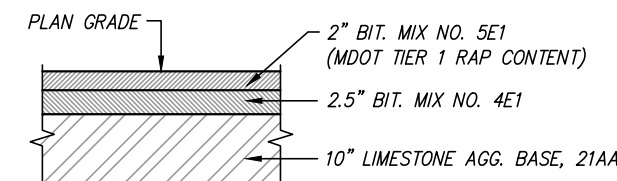
DETAIL  
8" CONCRETE PAVEMENT



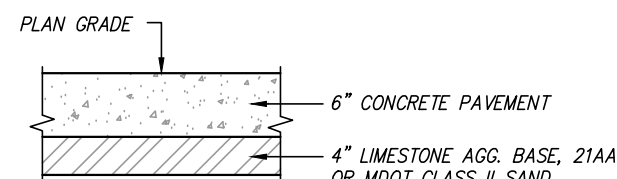
DETAIL  
6" CURB & GUTTER STANDARD PAN  
(MOD TYPE F1)



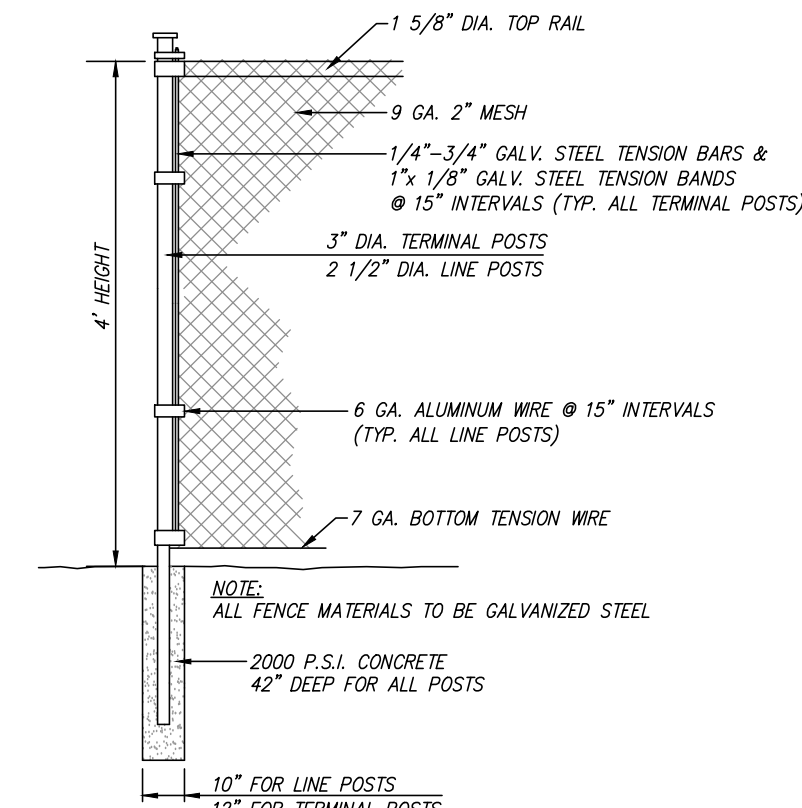
DETAIL  
STANDARD BITUMINOUS PAVEMENT



DETAIL  
HEAVY DUTY BITUMINOUS PAVEMENT

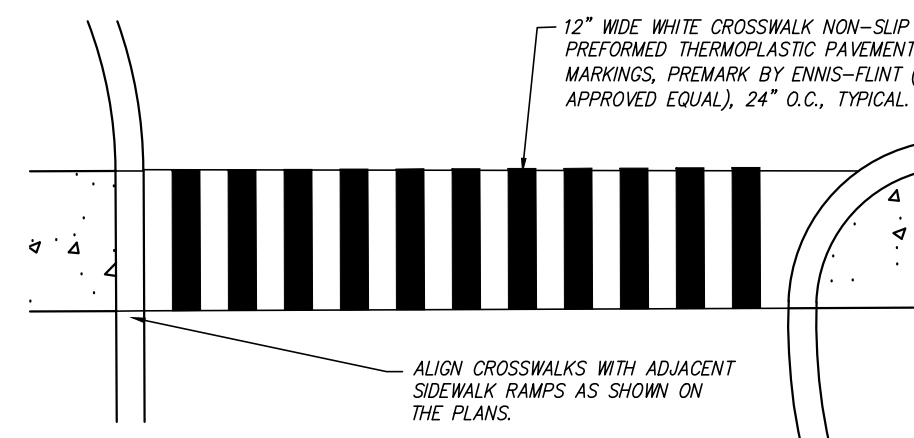


DETAIL  
6" CONCRETE WALK



- NOTE:  
ALL FENCE MATERIALS TO BE GALVANIZED STEEL.
- NOTE:  
TERMINAL POSTS INCLUDE END, COVER, ANGLE,  
INTERSECTION AND INTERMEDIATE BRACED POSTS.

DETAIL  
4' CHAIN LINK FENCE



DETAIL  
CROSSWALK



REGISTRATION SEAL

CONSULTANT

**SPALDING**  
**DeDECKER**  
Engineering and Surveying  
Excellence Since 1954

905 South Blvd. East  
Rochester Hills, MI 48307  
Phone: (248) 844-5400  
Fax: (248) 844-5404

www.sda-eng.com  
(800) 598-1600

PROJECT TITLE

**Anderson High School  
Field House  
Site Improvements**

**Southgate Community Schools  
Southgate, Michigan**

DRAWING TITLE

**Details**

ISSUE DATES

02-07-2024 CONSTRUCTION DOCUMENTS

DATE ISSUED FOR:

DRAWN JC

CHECKED NB

APPROVED NB

PROJECT NO.

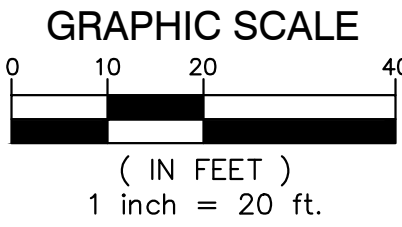
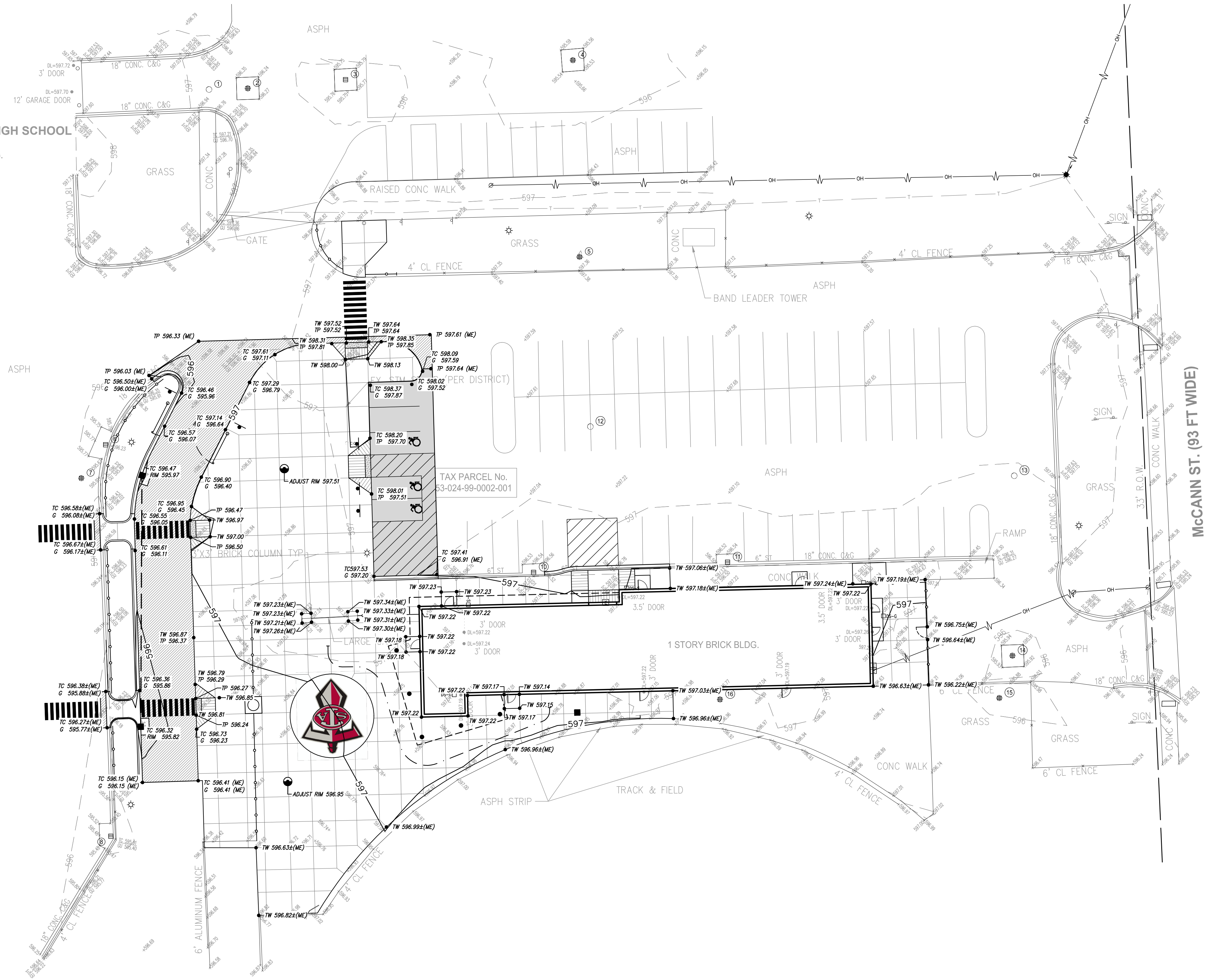
**TMP 20035E  
SD NP23142**

DRAWING NO.

**C3.3**



ATE ANDERSON HIGH SCHOOL  
15475 LEROY ST  
1 STORY BRICK BLDG.

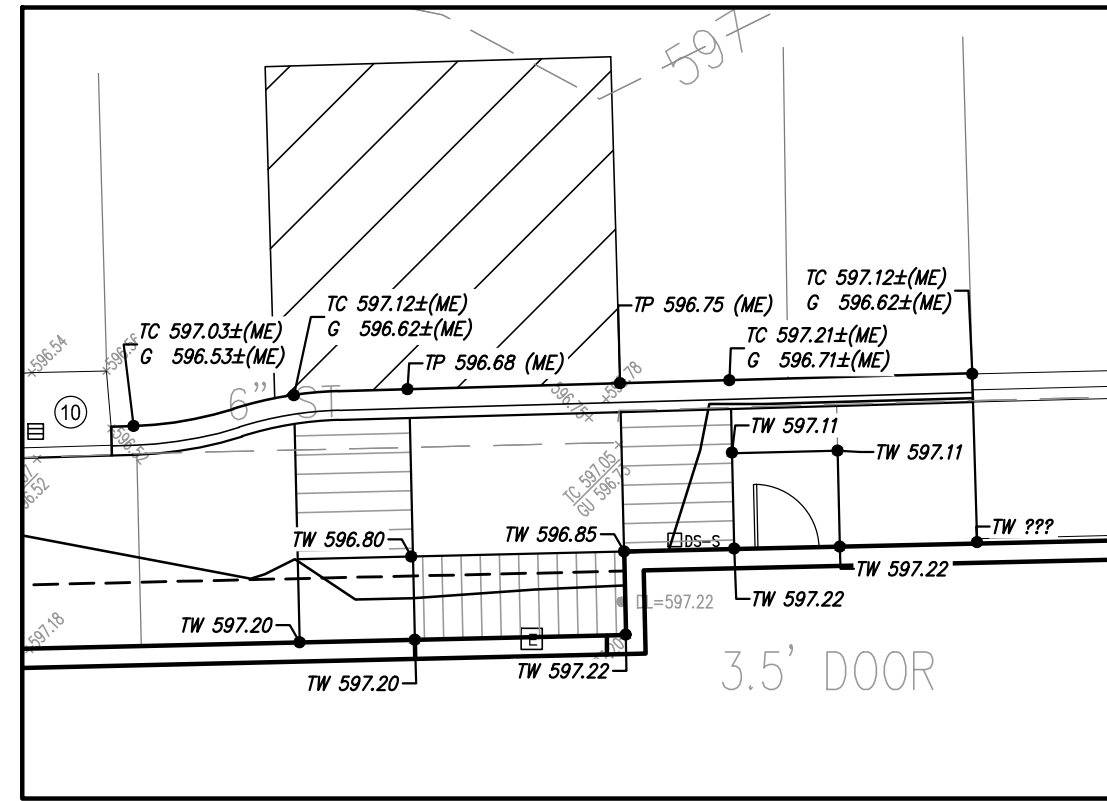


LEGEND	
---	PROPOSED WATERMAIN
---	PROPOSED SANITARY
---	PROPOSED STORM SEWER
---	PROPOSED GAS MAIN
---	PROPOSED ELECTRIC
●	PROPOSED HYDRANT
⊗	PROPOSED GATE VALVE & WELL (GVW)
⊗	PROPOSED TAPPING SLEEVE, VALVE & WELL (TSVW)
●	PROPOSED SAN MANHOLE (SAM)
●	PROPOSED STORM MANHOLE (MH)
■	PROPOSED CATCH BASIN (CB)
▴	PROPOSED INLET (INL)
▴	PROPOSED END SECTION (ES)
⊗	PROPOSED FIELD CATCH BASIN (FCB) W/BEEHIVE COVER OR STANDPIPE (SP) W/ BAR GRATE COVER
2	UTILITY CROSSING (SEE DATA TABLE)
CB	STRUCT. TYPE
2	STRUCT. NO.
20	STRUCT. NO.
10	STRUCT. TYPE
XXX	STRUCT. TYPE
STANDARD BITUMINOUS PAVEMENT	
HEAVY-DUTY BITUMINOUS PAVEMENT	
DEEP-STRENGTH BITUMINOUS PAVEMENT	
CONCRETE PAVEMENT	
CONCRETE SIDEWALK	
MILL PAVEMENT	
STORM SEWER STRUCTURE	
SANITARY SEWER STRUCTURE	
WATERMAIN STRUCTURE	

GRADING LEGEND	
EXISTING ELEVATION	TP 000.00 TOP OF PAVEMENT ELEVATION
TC 000.00 PROPOSED TOP OF CURB ELEVATION	TW 000.00 TOP OF WALK ELEVATION
G 000.00 PROPOSED GUTTER ELEVATION	FG 000.00 FINISH GRADE ELEVATION
OG 000.00 OUTSIDE GRADE ELEVATION	T/WALL 000.00 TOP OF WALL ELEVATION
11.30 EXISTING CONTOURS	ME 000.00 MATCH EXISTING ELEVATION
11.30 PROPOSED CONTOURS	FLOW ARROW

- GRADING NOTES**
- CONTRACTOR TO PLACE ALL NEW PAVEMENT TO THE GRADES INDICATED, OR MATCH ORIGINAL GRADES IF NEW GRADES ARE NOT SHOWN. CONTRACTOR SHALL CONFIRM MINIMUM 1% PAVEMENT SLOPES ARE ATTAINED IN ALL AREAS.
  - PROPOSED GRADES MAY BE BASED ON AN INTERPOLATION OF DATA SHOWN ON THE TOPOGRAPHIC SURVEY. THIS INTERPOLATED DATA IS APPROXIMATE AND COULD DIFFER SLIGHTLY BASED ON THE ACCURACY OF THE SURVEY. CONTRACTOR SHALL CONFIRM THAT THE PROPOSED GRADES SHOWN ON THIS PLAN WILL NOT CREATE A STANDING WATER CONDITION (E.G. A LOW SPOT OR PAVEMENT SLOPES LESS THAN 1%) OR AN UNSAFE CONDITION WITH SLOPES IN EXCESS OF 2%. CONTRACTOR SHALL NOTIFY ENGINEER IMMEDIATELY IF THEY BELIEVE THAT ONE OF THESE SITUATIONS WILL OCCUR BASED ON THE PROPOSED GRADES.
  - ALL PAVEMENT PLACED WITHIN BARRIER FREE PARKING AREAS (STALLS AND ACCESS AISLES) SHALL HAVE A MAXIMUM SLOPE OF 2% IN ANY DIRECTION, INCLUDING MEASURED DIAGONALLY ACROSS THE AREAS. CONTRACTOR SHALL ADJUST SLOPES AS NECESSARY TO PROVIDE ADA COMPLIANT SLOPES AS WELL AS PROVIDING RE-GRADED TRANSITION SLOPES OUTSIDE OF THE BARRIER FREE PARKING AREAS. CONTRACTOR SHALL NOTIFY ENGINEER IMMEDIATELY IF TRANSITION ZONES WILL EXCEED MAXIMUM 5% SLOPES. CONTRACTOR SHALL MAINTAIN POSITIVE DRAINAGE PATTERNING WITH ALL NECESSARY PAVEMENT RE-GRADE.
  - ALL BARRIER FREE RAMPS AND ADA ACCESSIBLE ROUTES SHALL BE CONSTRUCTED IN ACCORDANCE WITH THE CURRENT VERSION OF MOOT DETAIL R-28 "SIDEWALK RAMP AND DETECTABLE WARNING DETAILS".
  - CONTRACTOR IS RESPONSIBLE FOR CONTROLLING STORM WATER RUNOFF DURING CONSTRUCTION OPERATIONS. OF PARTICULAR CONCERN WILL BE THE TIME PERIOD AFTER THE SITE HAS BEEN STOPPED AND NOT YET RESTORED, BUILT UPON, OR PAVED. CONTRACTOR MUST INSTALL OR CONSTRUCT APPROPRIATE TEMPORARY MEASURES TO PROTECT ADJACENT PROPERTIES.

**RESTORATION NOTE**  
RESTORE ALL NON-PAVED AREAS WITH 3" OF CLEAN TOPSOIL AND SEED MIX (30% KENTUCKY BLUEGRASS, 20% PERENNIAL RYEGRASS, 50% CREEPING RED FESCUE). PLACE MULCH IN ALL SEEDING AREAS. ON SLOPES IN EXCESS OF 10 HORIZONTAL TO 1 VERTICAL PLACE NORTH AMERICAN GREEN DISTO MULCH BLANKET IMMEDIATELY AFTER SEEDING. USE METAL STAPLES PER MANUFACTURERS RECOMMENDATIONS TO HOLD MATTING IN PLACE.



DETAIL VIEW  
SCALE: 1"=10'



REGISTRATION SEAL



905 South Blvd. East  
Rochester Hills, MI 48307  
Phone: (248) 844-5400  
Fax: (248) 844-5404  
www.sda-eng.com  
(800) 598-1600

PROJECT TITLE  
**Anderson High School  
Field House  
Site Improvements**  
Southgate Community Schools  
Southgate, Michigan

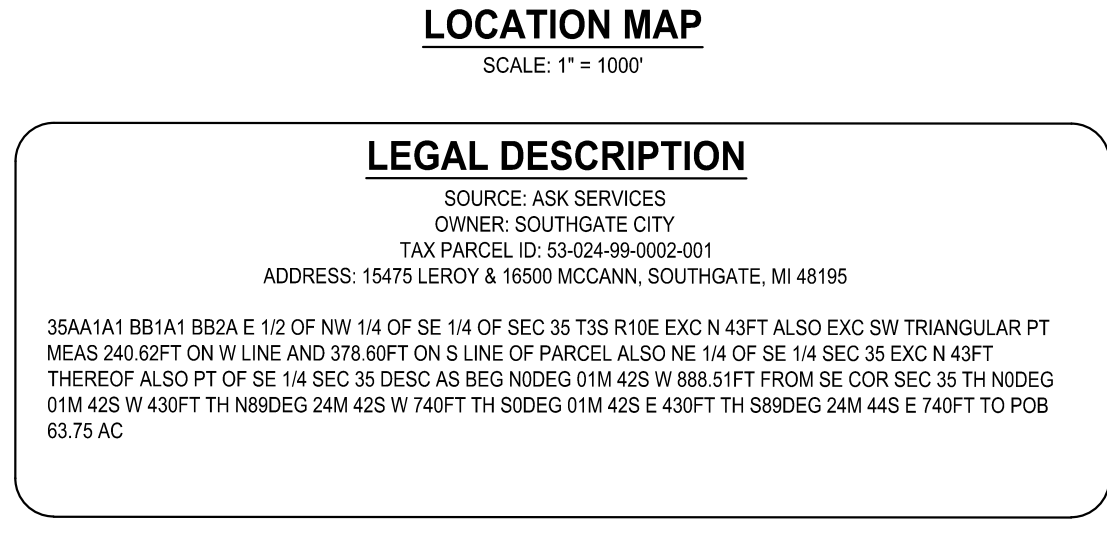
DRAWING TITLE  
**Grading Plan**

ISSUE DATES	
02-07-2024	CONSTRUCTION DOCUMENTS
DATE	ISSUED FOR:
DRAWN	JC
CHECKED	NB
APPROVED	NB

PROJECT NO.  
**TMP 20035E  
SD NP23142**  
DRAWING NO.  
**C4.1**







D. CLEAN PAVEMENTS, WALKS, CULVERTS, AND WATERCOURSES OF ALL ACCUMULATED SEDIMENT IN CONJUNCTION WITH REMOVING ALL TEMPORARY DEVICES. 1 WEEK


PROJECT COMPLETION ON OR ABOUT NOVEMBER 2024.

2006-17120  
BntuaB - BLOUNT-URBAN LAND COMPLEX, 0 TO 4 PERCENT SLOPES

THIS PROJECT SHALL BE CONSTRUCTED IN COMPLIANCE WITH PART 91 OF ACT 451 OF 1994, AS AMENDED. THE SOIL EROSION AND SEDIMENT CONTROL ACT.

## C5.1



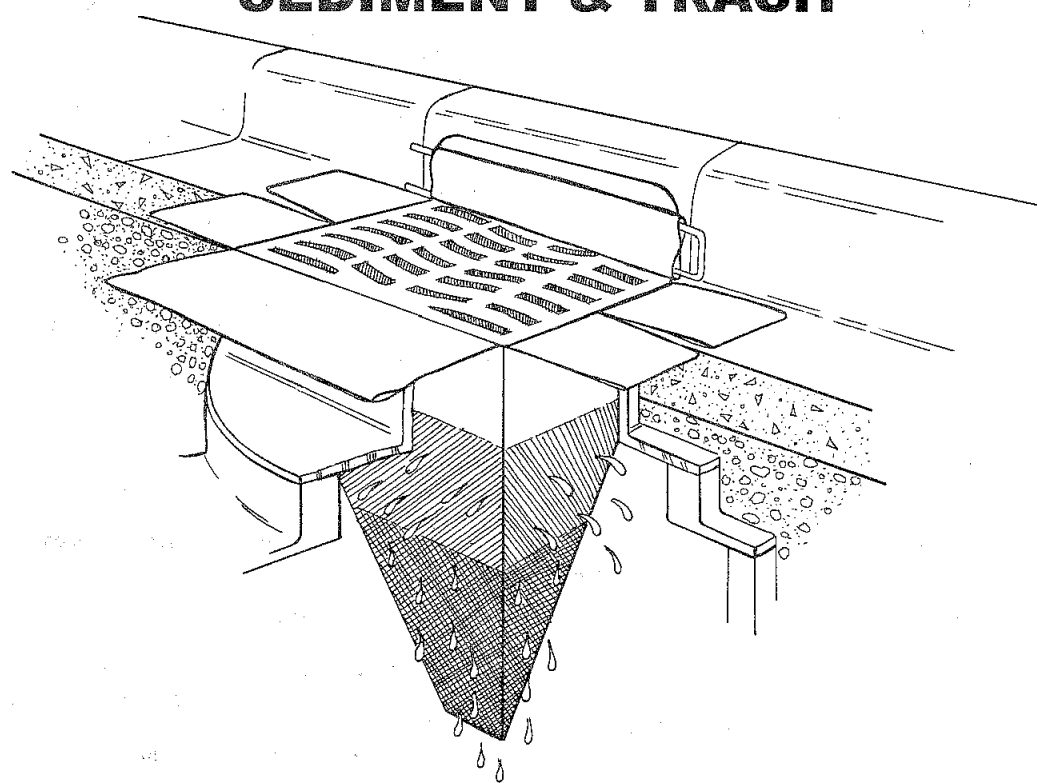


Price and Company, Inc.

SILTSACK®

Trademark owned by ACF Environmental

PROTECT CATCH BASINS  
FROM  
SEDIMENT & TRASH



SILTSACK traps sand, debris and most silt particles before they reach the sump or pipes. Costly basin and pipe system cleaning are reduced. With SILTSACK, maintenance is easy and site flooding is just a memory. Best of all, SILTSACK can be reused!

→ EASY TO INSTALL - EASY TO MAINTAIN

→ ECONOMICAL

→ FABRICATED TO FIT ANY SIZE OR SHAPE

→ PERMEABILITY OF 200 GPM/SF [Hi-Flow style]

→ REPLACES ALL ROCK OR GEOTEXTILES

→ REUSABLE

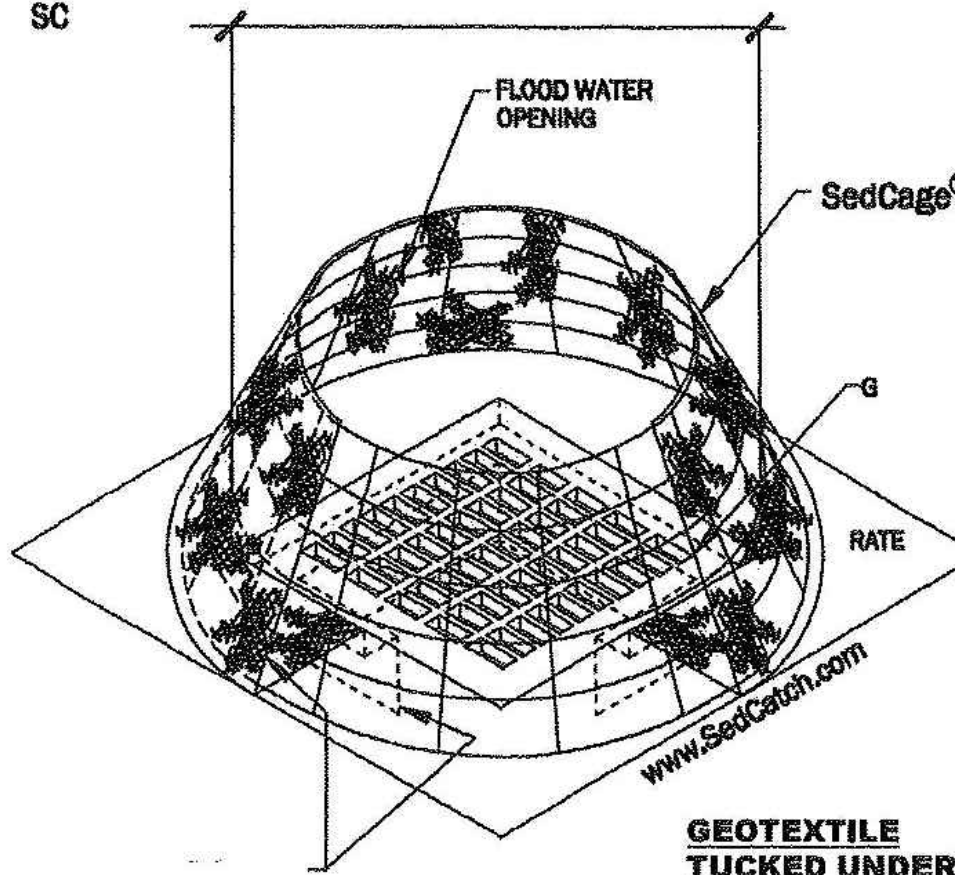
SILTSACK WORKS!

Trademark of Price and Company, Inc.

REAR YARD INLET FILTER

SedCatch® SedCage® Yard Inlet Protection

SC



SIZING INSTRUCTIONS:

MEASURE THE DIAGONAL DIMENSION OF THE GRATE. SELECT A CAGE THAT IS AT LEAST 1" LARGER.

COMPATIBLE GRATES:

A SedCage® IS COMPATIBLE WITH ALL GRATES IN WHICH THE EDGES OF THE GRATE ARE SUPPORTED BY A LEDGE.

SIZES:

FITS SQUARE GRATES FROM 12" X 12" THROUGH 22" X 22"

FITS ROUND GRATES FROM 8" DIA. THROUGH 24" DIA.

FITS RECTANGULAR GRATES WITH A DIAGONAL BETWEEN 17" AND 31" ( $a^2 + b^2 = c^2$ )

32" SedCage®

FITS SQUARE GRATES FROM 19" X 19" THROUGH 29" X 29"

FITS ROUND GRATES FROM 19" DIA. THROUGH 30" DIA.

FITS RECTANGULAR GRATES WITH A DIAGONAL BETWEEN 28" AND 41" ( $a^2 + b^2 = c^2$ )

42" SedCage®

FITS SQUARE GRATES FROM 24" X 24" THROUGH 36" X 36"

FITS ROUND GRATES FROM 24" DIA. THROUGH 40" DIA.

FITS RECTANGULAR GRATES WITH A DIAGONAL BETWEEN 32" AND 53" ( $a^2 + b^2 = c^2$ )

54" SedCage®

FITS SQUARE GRATES FROM 27" X 27" THROUGH 42" X 42"

FITS ROUND GRATES FROM 28" DIA. THROUGH 48" DIA.

FITS RECTANGULAR GRATES WITH A DIAGONAL BETWEEN 44" AND 61" ( $a^2 + b^2 = c^2$ )

62" SedCage®

CUSTOM SIZES AVAILABLE

GEOTEXTILE  
TUCKED UNDER  
ALL FOUR SIDES  
OF GRATE.

www.SedCatch.com

  
T M P ARCHITECTURE INC  
1391 WEST SQUARE LAKE ROAD  
BLOOMFIELD HILLS MICHIGAN 48302  
PH 248.388.4561 FX 248.388.0223  
EM INFO @TMP-ARCHITECTURE.COM

REGISTRATION SEAL

CONSULTANT

  
Engineering and Surveying  
Excellence Since 1954

905 South Blvd. East  
Rochester Hills, MI 48307  
Phone: (248) 844-5400  
Fax: (248) 844-5404

www.sda-eng.com  
(800) 598-1600

PROJECT TITLE

Anderson High School  
Field House  
Site Improvements

Southgate Community Schools  
Southgate, Michigan

DRAWING TITLE

Soil Erosion And  
Sedimentation  
Control Details

ISSUE DATES

02-07-2024	CONSTRUCTION DOCUMENTS

DATE	ISSUED FOR
DRAWN	JC
CHECKED	NB
APPROVED	NB

PROJECT NO.

**TMP 20035E**  
**SD NP23142**

DRAWING NO.

**C5.2**



3 WORKING DAYS  
BEFORE YOU DIG  
CALL MISS DIG.  
1-800-482-7171  
For free location of public utility lines



MANHOLE  
 CATCH BASIN  
 SEWER CLEANER OUT  
 GAS METER  
 GAS SHUT OFF VALVE  
 VALVE BOX  
 GATE VALVE & WELL  
 WATER SHUT OFF VALVE  
 FIRE HYDRANT  
 UNRIGGER VALVE BOX  
 LAWN SPRINKLER HEAD  
 INVERTED MAPPED OBJECT  
 ELECTRIC RISER OR METER  
 TELEPHONE  
 CABLE TV RISER  
 AIR CONDITION UNIT  
 UTILITY POLE  
 UTILITY POLE IN LAMP EXTENSION  
 ARROW INDICATES DIRECTION OF ARROW  
 LIGHT POLE  
 LIGHT POLE WITH LAMP EXTENSION  
 TRAFFIC SIGNAL  
 POLE W/ SIGNAL SIGNAL (OVER ROAD)  
 GUY WIRE  
 GROUND LEVEL / DECORATIVE LIGHTING  
 FLAG POLE  
 METAL OR CONC. POST  
 MAIL BOX  
 SNOW  
 WATER FOUNTAIN  
 PARKING METER  
 BILLBOARD OR LARGE SIGN  
 BASKETBALL HOOP  
 BOULDER  
 STATUE OR SCULPTURE  
 BENCH  
 BIKE RACK  
 PICNIC TABLE  
 SOCCER GOAL  
 STUMP  
 D<sub>S</sub>-5 DOWNSPOUT INTO STORM DRAIN  
 D<sub>S</sub>-6 DOWNSPOUT TO GROUND  
 CONIFEROUS TREE  
 DECIDUOUS TREE  
 DECIDUOUS SHRUB  
 CONIFEROUS SHRUB  
 SECTION CORNER  
 TRAVERSE POINT  
 STRUCTURE NUMBER  
 SPOT DATA No.  
 SPOT ELEVATION  
 TC TOP OF CURB ELEVATION  
 GU GUTTER ELEVATION  
 TP TOP OF PAVEMENT ELEVATION  
 EM EDGE OF METAL ELEVATION  
 TW TOP OF WALK ELEVATION  
 TWALL BOTTOM OF WALK ELEVATION  
 GR GROUND ELEVATION  
 UG UNDERGROUND  
 FO FIBER OPTIC  
 CONC CONCRETE  
 ASPH ASPHALT  
 FF FINISH FLOOR ELEVATION  
 DL DOOR LEDGE ELEVATION  
 F.I.P. FOUND  
 M.O.N. FOUND IRON PIPE  
 F.P.K. FOUND P.K. P.  
 S.I. SET IRON W/IDA CAP  
 S.P.K. SET P.K. P.  
 S.P.K./TAG SET P.K. P. W/IDA TAG  
 M.MAGTAG SET MAGNETIC NAIL W/IDA TAG  
 M. MEASURED  
 R. RECORD  
 C. CALCULATED  
 INV. INVERT ELEVATION  
 CMP CORRUGATED METAL PIPE

UTILITY CHART			
UTILITY PROVIDER	CONTACT #	MISS DIG RESULTS	DATE
AT&T TELEPHONE	6168812268	RECEIVED	10/27/2023
COMCAST CABLE TV	856962855	RECEIVED	10/24/2023
ELECTRIC (ELECTRIC) ELECTRIC	3134707584	RECEIVED	11/29/2023
DTE ENERGY (GAS) GAS	3428167839	RECEIVED	10/24/2023
SOUTHGATE CITY POTABLE WATER	7342583074	RECEIVED	10/25/2023
SOUTHGATE CITY SANITARY SEWER	7342583074	RECEIVED	10/25/2023
SOUTHGATE CITY STORM SEWER	7342583074	RECEIVED	10/25/2023
SOUTHGATE COMMUNITY SCHOOLS FIBER OPTICS	6164558840	RECEIVED	10/19/2023
WIDE OPEN WEST CABLE TV	5864533335	RECEIVED	10/23/2023
WIDE OPEN WEST FIBER OPTICS	5864533335	RECEIVED	10/23/2023



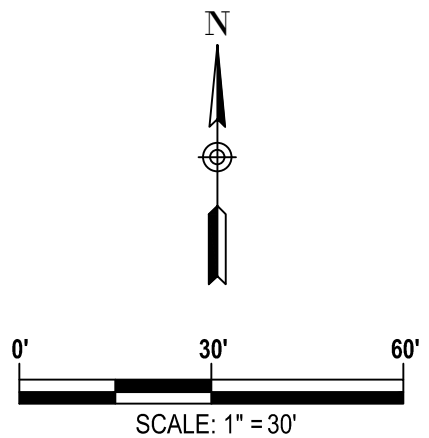
THE STRUCTURE TABLE ON THIS DRAWING IDENTIFIES THE AS-SURVEYED UNDERGROUND UTILITY MANHOLES THAT WERE FIELD MEASURED USING REASONABLE AND TRADITIONAL SURVEYING PRACTICES. PIPE SIZES, DIRECTIONS AND ELEVATIONS ARE INDICATED BY A COMBINATION OF FIELD EVIDENCE AND AVAILABLE RECORD INFORMATION. UNDERGROUND UTILITY PIPE SIZES AND CONNECTIONS ARE MANY TIMES AMBIGUOUS. SOME STRUCTURES MAY HAVE PIPES WITH UNKNOWN CONNECTIONS, SUMPS AND / OR PIPES THAT ARE FILLED WITH DEBRIS. IT WILL BE UP TO THE DESIGN ENGINEER TO LOOK AT THE PRESENTED SURVEY RESULTS AND DECIDE IF FURTHER INVESTIGATION BY OTHER METHODS SUCH AS VACUUM CLEAN OUT, UNDERGROUND RADAR, SMOKE TESTING AND PHYSICAL EXCAVATION IS REQUIRED AS AN ADDITIONAL SERVICE.



1. THIS TOPOGRAPHICAL MAP IS BASED UPON A FIELD SURVEY PERFORMED BY SPALDING DEDECKER DURING DECEMBER OF 2023.
2. THE PROPERTY LINES/RIGHT-OF-WAY LINES SHOWN ON THIS TOPOGRAPHICAL SURVEY ARE INTENDED TO BE AN APPROXIMATE GRAPHICAL REPRESENTATION OF THE PROPERTY LINES. SPALDING DEDECKER HAS BASED THE PROPERTY LINES/RIGHT OF WAY LINES UPON A COMBINATION OF A PROVIDED LEGAL DESCRIPTION, FOUND FIELD DOCUMENTATION AND OCCUPATION. PROPERTY LINES AS SHOWN IN DRAWING ARE BASED UPON THIS WORK. VARIATIONS MAY EXIST BETWEEN THE EXISTING PROPERTY DESCRIPTION AS SHOWN AND THE GRAPHICAL LINES COMPUTED IN THE DRAWING. A COMPLETE PROPERTY LINE ANALYSIS IS NOT PART OF THE SCOPE OF SERVICES AND PROPERTY CORNERS HAVE NOT BEEN SET IN THE FIELD PER THE AGREED TO SCOPE OF SERVICES.
3. THIS SURVEY HAS BEEN PREPARED WITH THE BENEFIT OF A CURRENT INFORMATIONAL TITLE SEARCH WITHIN THE RECORDS OF RECORD OR RECORD A 100 YEAR SEARCH FOR ENCUMBRANCES. THE INFORMATIONAL TITLE SEARCH WAS PERFORMED BY ASK SERVICES HAVING AN ORDER NUMBER 181272322 AND AN EFFECTIVE DATE OF 11-17-202X. ALL PLOTTABLE ENCUMBRANCES LISTED ON SCHEDULE B4 EXEMPTIONS OF THIS TITLE SEARCH HAVE BEEN SHOWN ON THIS SURVEY IF THEY FALL WITHIN THE LIMITS OF DETAILED MAPPING.
4. THE BASIS OF BEARINGS IS THE STATE PLANE GRID.
5. THE COORDINATE SYSTEM FOR THIS SURVEY IS THE STATE PLANE COORDINATE SYSTEM, MICHIGAN SOUTH ZONE (213), BASED ON NAD83 (NRSR2011). UNITS ARE INTERNATIONAL FEET. COORDINATES WERE OBTAINED USING A DATA LINK TO THE MOOT CONTINUOUSLY OPERATING REFERENCE STATIONS (CORS).
6. THE VERTICAL DATUM OF THIS SURVEY IS BASED UPON THE NORTH AMERICAN VERTICAL DATUM OF 1988 (NAVDS83) AS ESTABLISHED WITH RTK GPS MEASUREMENTS USING A DATA LINK TO THE MOOT CONTINUOUSLY OPERATING REFERENCE STATIONS (CORS).
7. THE PARKING LOT STRIPING SHOWN ON THIS SURVEY IS APPROXIMATE. DIMENSIONAL AND/OR ORIENTATION VARIATIONS MAY EXIST. THIS DRAWING SHOULD NOT BE USED FOR A PARKING SPACE COUNT.
8. THE UTILITY INFORMATION SHOWN ON THIS SURVEY IS BASED UPON A COMBINATION OF RECORD INFORMATION AND FIELD MEASUREMENTS. A MISS DIG DESIGN TICKET NUMBER OF 20220902800 HAS BEEN SUBMITTED TO THIS PROJECT AND A UTILITY PROVIDER CHART IS SHOWN ON THIS DRAWING. THERE ARE NO ASSURANCES THAT ALL PROVIDERS HAVE RESPONDED AND THE SURVEYOR DOES NOT GUARANTEE THAT ALL UNDERGROUND UTILITIES ARE SHOWN AND/OR POSITIONED PROPERLY ON THIS DRAWING DUE TO AMBIGUOUS PLANS AND RECORDS PROVIDED TO US. THE INFORMATION SHOWN ON THIS DRAWING IS INTENDED TO BE USED AS A GUIDE FOR POSSIBLE UNDERGROUND UTILITY CONFLICTS. THE INFORMATION IS NOT INTENDED FOR OTHERS TO RESOLVE THE ACTUAL LOCATION OF ANY UNDERGROUND UTILITY THROUGH THE MISS DIG FIELD VERIFICATION SYSTEM PRIOR TO ANY SITE EXCAVATION. CALL 811 OR 800-482-2711.

DATUM: GPS-DERIVED NAVD88	
SITE BM#100	SET BENCH TIE IN WEST FACE OF U.P. LOCATED 55 FT WEST OF CENTERLINE OF MCCANN AVE AND ±40FT NORTH OF CENTERLINE NORTH ENTRANCE TO ATHLETIC FIELD. ELEV = 597.85
SITE BM#101	SCRIBED "X" ON EAST SIDE OF LIGHT POLE BASE LOCATED ±60FT NORTH AND ±115FT WEST OF THE NORTH WEST CORNER OF FIELD HOUSE BUILDING. ELEV = 598.94
SITE BM#102	SCRIBED "X" ON EAST SIDE OF LIGHT POLE BASE LOCATED ±70FT SOUTH AND ±115FT WEST OF THE NORTH WEST CORNER OF FIELD HOUSE BUILDING. ELEV = 598.53

SOURCE: ASK SERVICES  
OWNER: SOUTH GATE CITY  
TAX PARCEL ID: 53-024-99-0002-01  
ADDRESS: 15475 LEROY & 16500 MCCANN, SOUTHGATE, MI 48195



**REGISTRATION SEAL**

## CONSULTANT



905 South Blvd. East  
Rochester Hills, MI 48307  
Phone: (248) 844-5400  
Fax: (248) 844-5404

[www.sda-eng.com](http://www.sda-eng.com)  
(800) 598-1600

**PROJECT TITLE**

# Anderson High School Field House Site Improvements

**Southgate Community Schools**  
**Southgate, Michigan**

DRAWING TITLE  
**Topographical Survey**

## ISSUE DATES

02-07-2024 CONSTRUCTION DOCUMENTS

DATE: ISSUED FOR:

<b>DRAWN</b>	<b>JC</b>
<b>CHECKED</b>	<b>NB</b>
<b>APPROVED</b>	<b>NB</b>

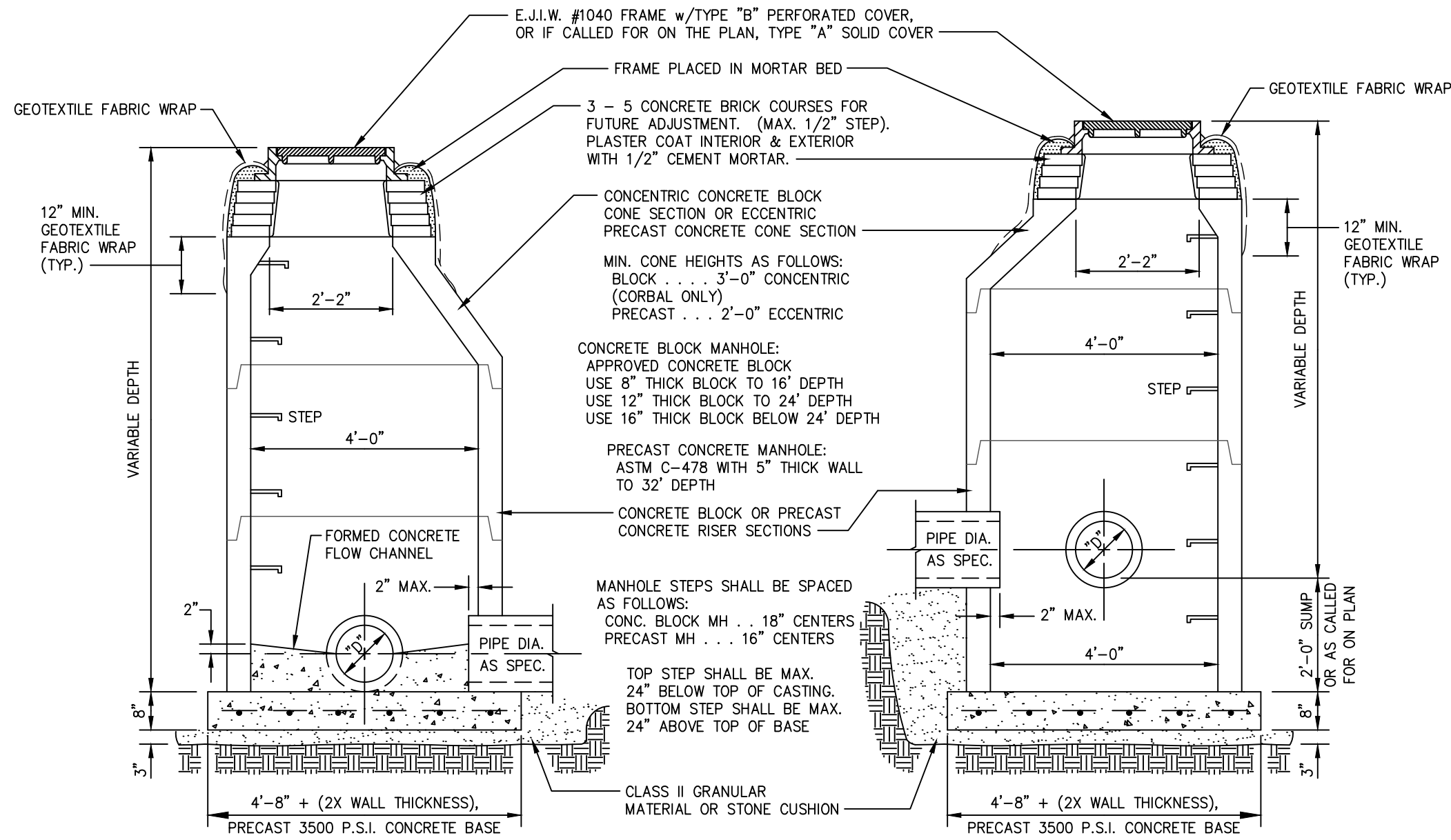
PROJECT NO.

**TMP 20035E**  
**SD NP23142**

DRAWING NO.

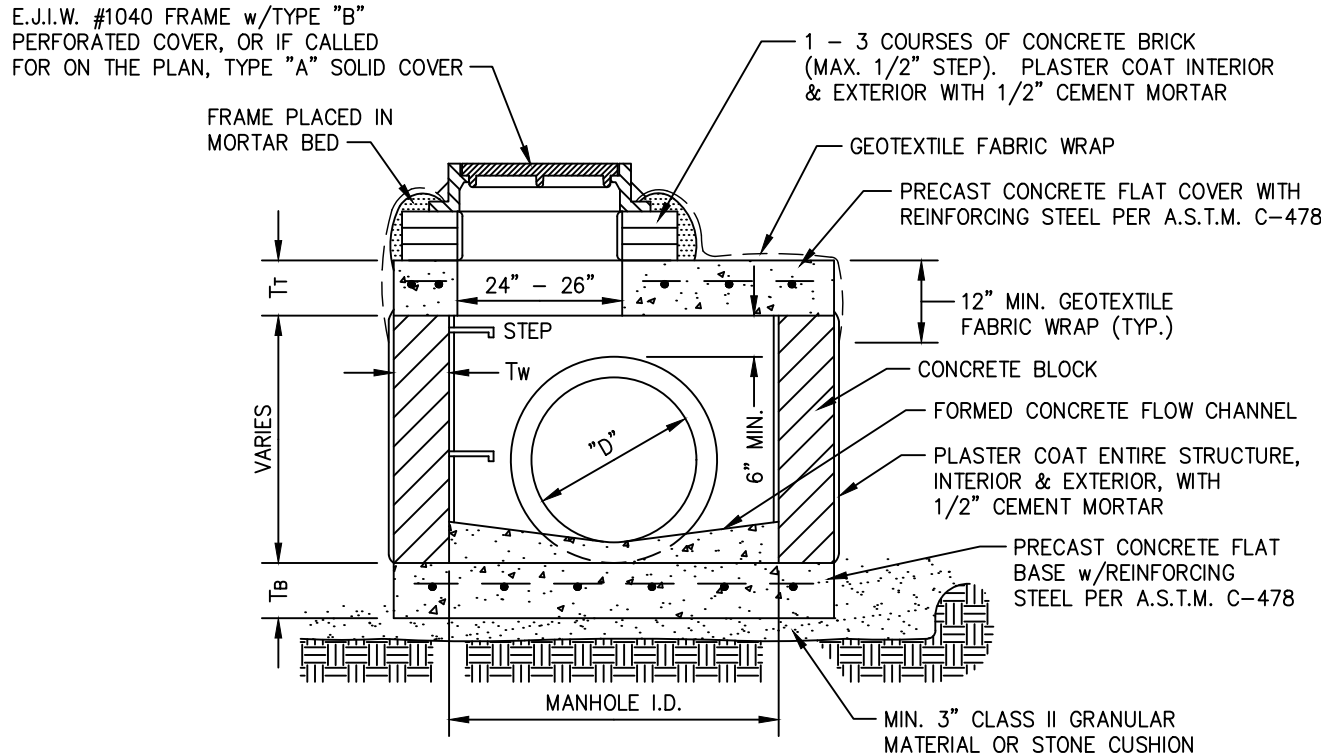
## C6.1





MANHOLE DETAIL  
N.T.S.

MANHOLE w/SUMP DETAIL  
N.T.S.



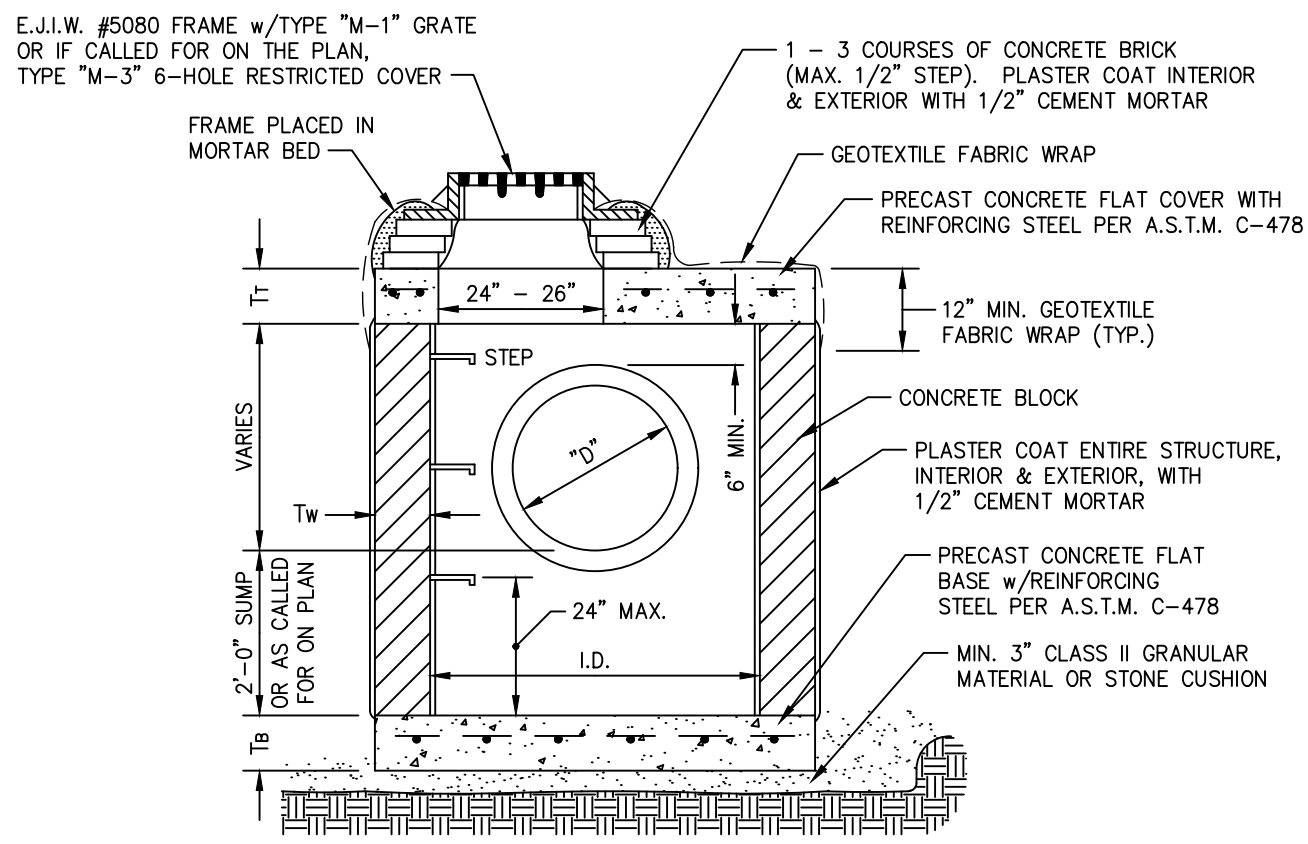
NOTE: PRECAST CONCRETE COMPONENTS  
PER A.S.T.M. C-478 MAY BE USED

MANHOLE STEPS SHALL BE SPACED AS FOLLOWS:  
CONC. BLOCK MANHOLE . . . 18" CENTERS  
PRECAST MANHOLE . . . 16" CENTERS

TOP STEP SHALL BE MAX. 24" BELOW TOP OF CASTING  
BOTTOM STEP SHALL BE MAX. 24" ABOVE TOP OF BASE

MANHOLE PLAN DIA.	MH I.D.	FLAT COVER DIAMETER	T <sub>1</sub>	FLAT BASE DIAMETER	T <sub>B</sub>	CONCRETE BLOCK T <sub>w</sub>
4'-0"	±43"	60"	8"	72"	8"	8"
5'-0"	±59"	84"	8"	96"	12"	12"
6'-0"	±71"	96"	8"	96"	12"	12"
8'-0"	±95"	120"	12"	120"	12"	12"

MANHOLE TYPE "D"  
N.T.S.



NOTE: PRECAST CONCRETE COMPONENTS  
PER A.S.T.M. C-478 MAY BE USED

CATCH BASIN STEPS SHALL BE SPACED AS FOLLOWS:  
CONCRETE BLOCK CATCH BASIN . . . 18" CENTERS  
PRECAST CATCH BASIN . . . 16" CENTERS

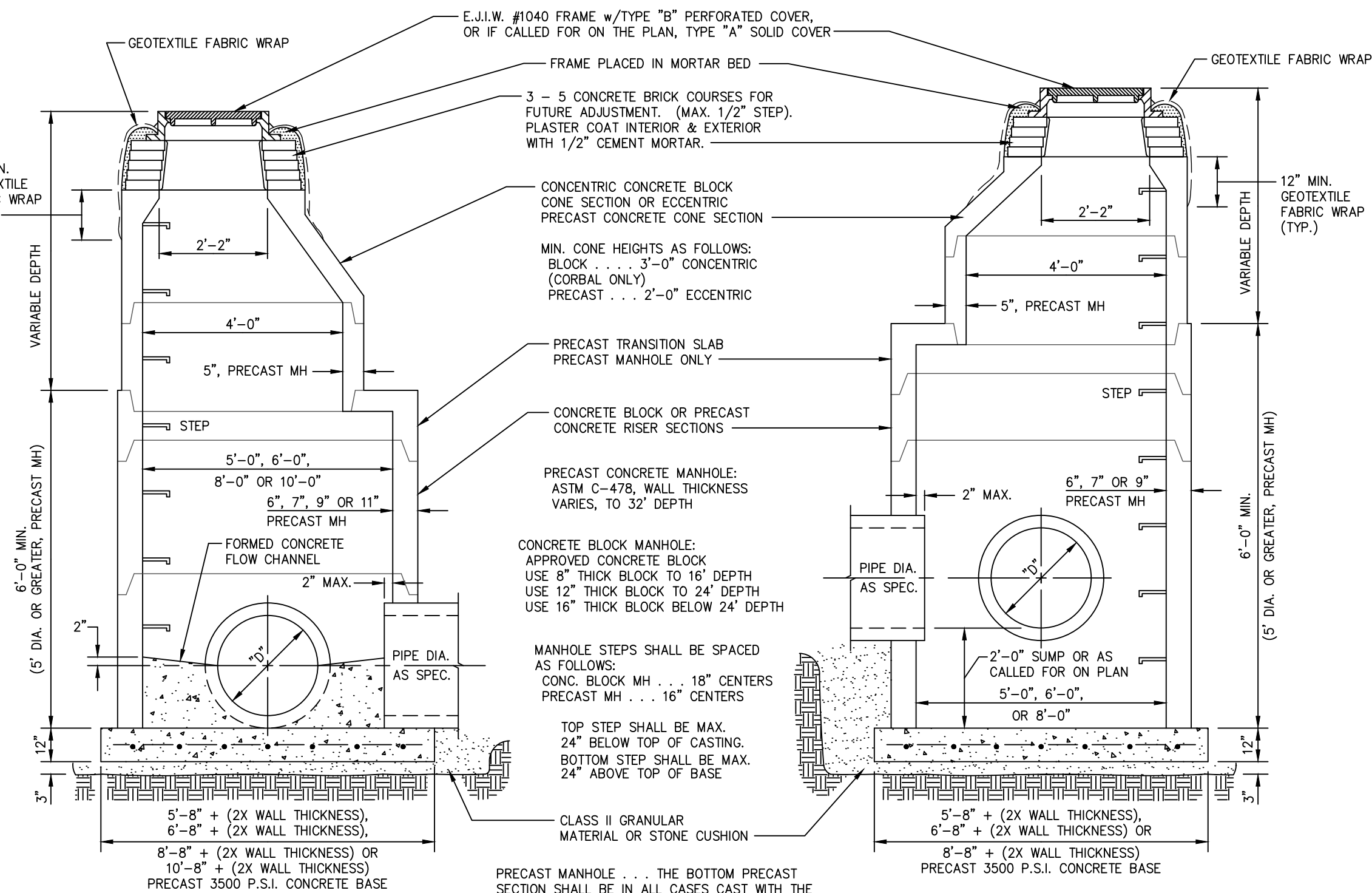
TOP STEP SHALL BE MAX. 24" BELOW TOP OF CASTING

CATCH BASIN PLAN DIA.	I.D.	FLAT COVER DIAMETER	T <sub>1</sub>	FLAT BASE DIAMETER	T <sub>B</sub>	CONCRETE BLOCK T <sub>w</sub>
4'-0"	±43"	60"	8"	72"	8"	8"
5'-0"	±59"	84"	8"	96"	12"	12"
6'-0"	±71"	96"	8"	96"	12"	12"

CATCH BASIN TYPE "D"  
N.T.S.

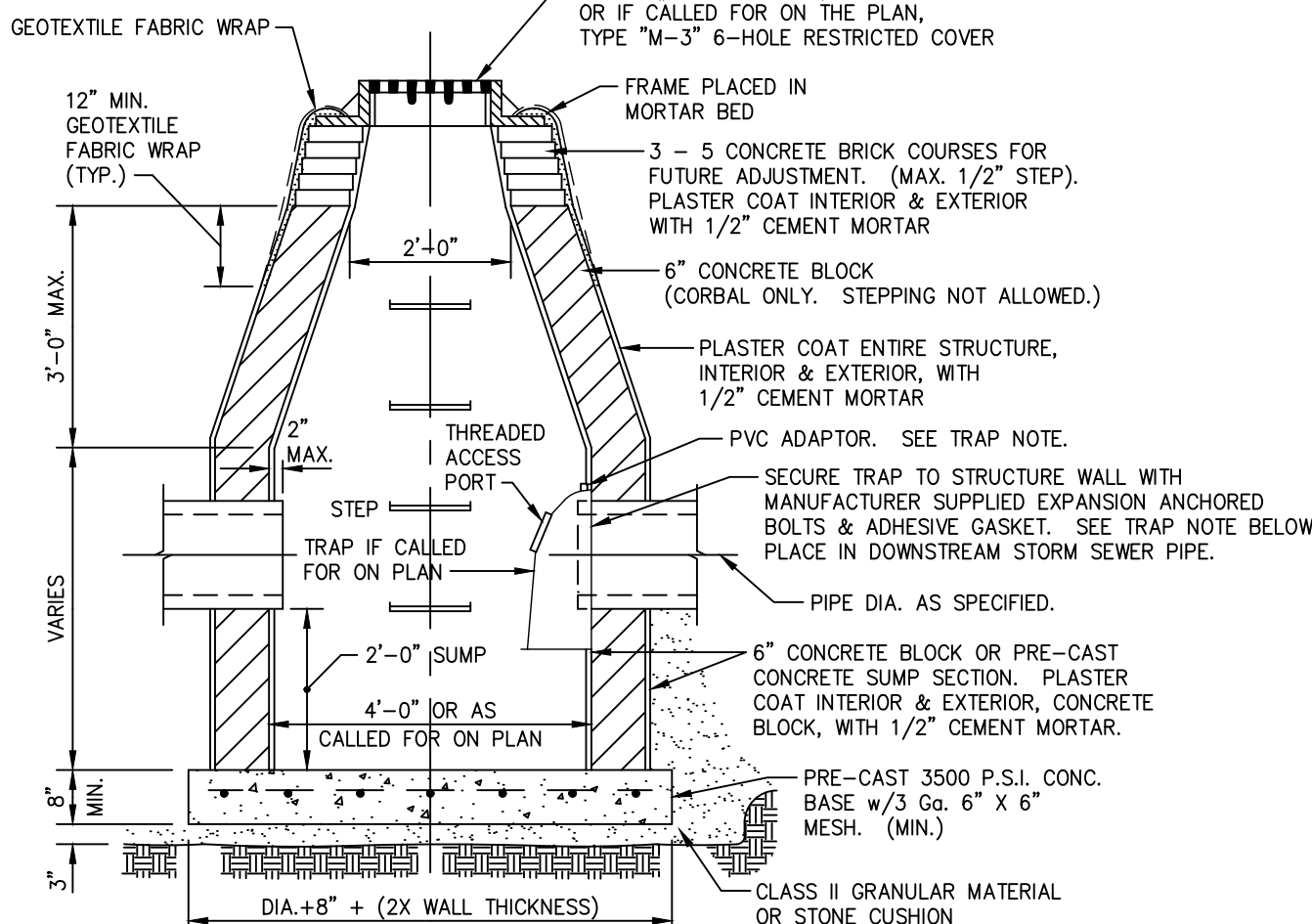
STORM SEWER NOTES

- ALL STORM SEWER PIPE 12-INCHES AND LARGER SHALL BE REINFORCED CONCRETE, ASTM C-76, CL. IV OR CL.V PIPE WITH MODIFIED GROOVE TONGUE WITH RUBBER JOINTS, N-12 WT IB PIPE MEETING CURRENT ASTM F2648 AND AASHTO M294 STANDARDS FOR SIZES 12-INCH THROUGH 60-INCH, CONTECH D-2000 (12-INCH THROUGH 36-INCH) PIPE MEETING CURRENT ASTM F949 OR AASHTO M294 STANDARDS OR CONTECH DUROMAXX (24-INCH THROUGH 120-INCH) PIPE.
- ALL CONSTRUCTION SHALL CONFORM TO CURRENT CITY OF SOUTHGATE DETAILED SPECIFICATIONS FOR STORM SEWER UTILITIES.
- A 4" COMPACTED SAND BEDDING SHALL BE PROVIDED UNDER ALL SEWER PIPE.
- ALL TRENCH DETAILS FOR BOTH TRENCH A AND TRENCH B SHALL BE BASED ON THE MANUFACTURER'S RECOMMENDATIONS FOR THE GIVEN TYPE OF PIPE.
- ALL ROAD CATCH BASINS AND INLETS SHALL HAVE UNDERDRAINS, A MINIMUM OF 5 FEET LONG WITH END PLUG OR CAP, PLACED INTO THE SEWER TRENCH AND WRAPPED WITH SOIL FILTRATION FABRIC. THE UNDERDRAIN SHALL BE EITHER CORRUGATED OR SMOOTH WALL PLASTIC TUBING OF POLYETHYLENE OR POLYVINYLCHLORIDE AND SHALL CONFORM TO THE REQUIREMENTS FOR HEAVY-DUTY TUBING OF ASTM F 405, EXCEPT THAT THE BASIC MATERIALS FOR USE IN FABRICATING PVC TUBING SHALL BE A PVC PLASTIC MEETING THE REQUIREMENTS AS SPECIFIED IN ASTM D 3033. THE PERFORATIONS SHALL BE IN THE LOWER SEGMENT ONLY AND SHALL BE CLEARLY MARKED WITH A TOP LOCATING STRIPE OR EMBOSMENT.
- ALL DRAINAGE STRUCTURES SHALL HAVE A GEOTEXTILE FABRIC WRAPPED AROUND THE BRICK AND MORTAR WORK. THE FABRIC SHALL BE A NON-WOVEN GEOTEXTILE MEETING THE MINIMUM ASTM REQUIREMENTS FOR GEOTEXTILE BLANKET AS ESTABLISHED BY MDOT, SECTION 910.
- STROM MANHOLES AND CATCH BASINS SHALL BE PRECAST STRUCTURES. FRAMES AND CASTINGS FOR MANHOLES AND CATCH BASINS SHALL BE AS MANUFACTURED BY EJ (FORMERLY EAST JORDAN IRON WORKS). ALL STORM SEWER STRUCTURES SHALL BE PRECAST STRUCTURES WITH RUBBER GASKETED JOINTS FOR THE MANHOLE SECTIONS. EACH MANHOLE AND CATCH BASIN SECTION AND JOINT SHALL BE SEALED EXTERNALLY USING A "CRETEX WRAP" EXTERNAL JOINT SEALER OR APPROVED EQUAL.



MANHOLE DETAIL  
N.T.S.

MANHOLE w/SUMP DETAIL  
N.T.S.

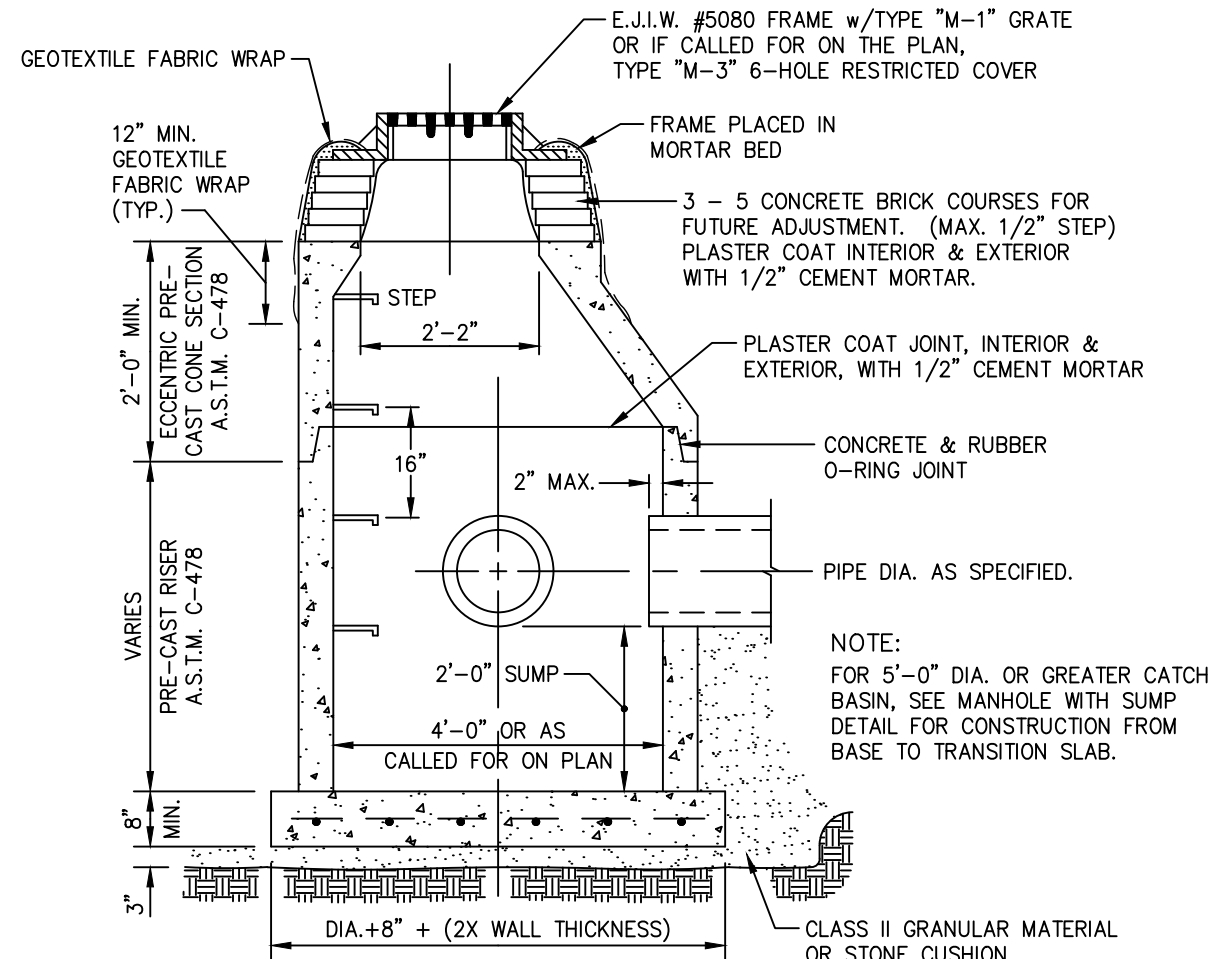


TRAP NOTE: TRAP SHALL BE "SNOUT", MANUFACTURED BY BEST MANAGEMENT PRODUCTS, INC. AND SHALL BE INSTALLED PER MANUFACTURER'S INSTRUCTIONS, EXCEPT THAT THE 1 INCH PVC ANTI-SIPHON PIPE SHALL BE CUT TO A REASONABLE HEIGHT ABOVE THE ADAPTOR AND CAPPED. CONTRACTOR SHALL APPLY A SILICONE BASED LUBRICANT TO THE THREADS OF THE ACCESS PORT COVER. TRAP SHALL BE INSTALLED WHERE CALLED FOR ON PLAN.

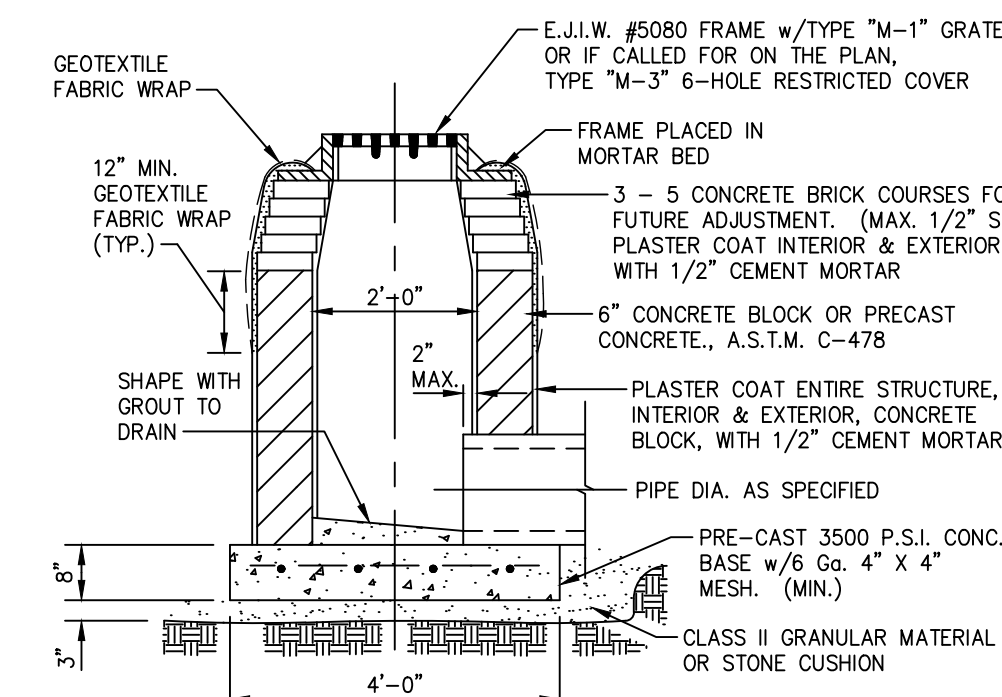
STEP NOTE: STEPS SHALL BE SPACED AT 18" CENTERS FOR CONCRETE BLOCK CATCH BASIN. TOP STEP SHALL BE MAX. 24" BELOW TOP OF CASTING. BOTTOM STEP SHALL BE MAX. 24" ABOVE TOP OF BASE.

C.B. NOTE: FOR 5'-0" DIA. OR GREATER CATCH BASINS, SEE CATCH BASIN TYPE "D" DETAIL FOR CONSTRUCTION.

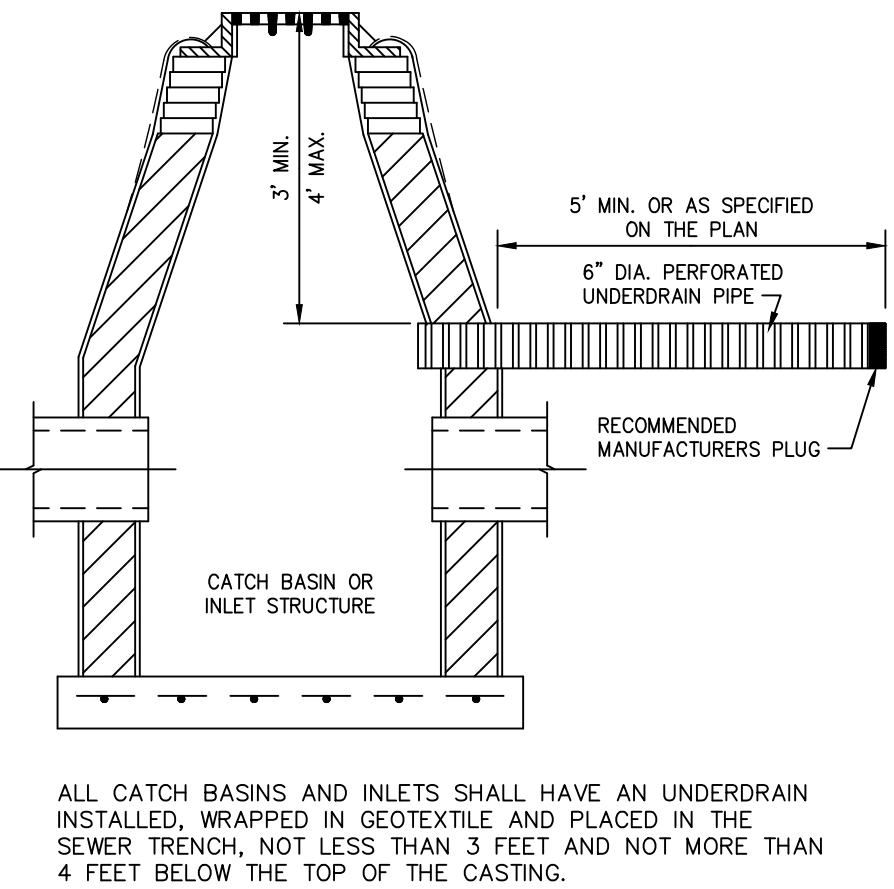
CATCH BASIN DETAIL  
N.T.S.



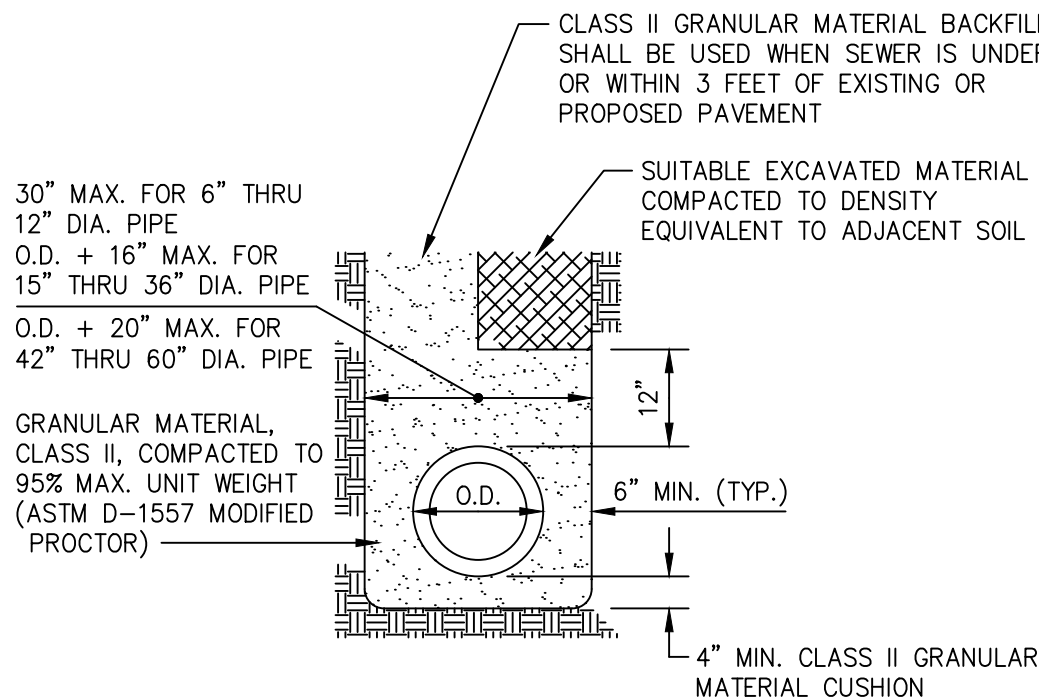
PRE-CAST CATCH BASIN DETAIL  
N.T.S.



INLET DETAIL  
N.T.S.



CATCH BASIN OR INLET UNDERDRAIN DETAIL  
N.T.S.



SEWER TRENCH DETAIL  
N.T.S.

PROJECT NUMBER:  
STM-1

DATE:  
12-1-08

SCALE:  
N/A

DESIGNED BY:  
JMM

DRAWN BY:  
JMM

CHECKED BY:

APPROVED BY:

REVISIONS

4-17-12

Standard Notes  
Updated

ENGINEERING THE FUTURE.

HENNESSEY



ENGINEERS, INC.

SOUTHGATE, MI 48195

(734) 759-1600

WWW.HENGINEERS.COM

TITLE  
STORM SEWER DETAILS

STANDARD DETAILS

CITY OF SOUTHGATE

WAYNE COUNTY, MICHIGAN

SHEET

C7.1