

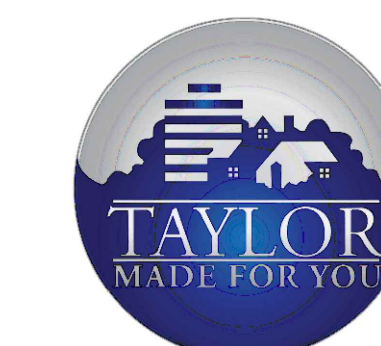


**Sidock Group**

ARCHITECTS • ENGINEERS • CONSULTANTS

Corporate Headquarters  
45650 Grand River Ave.  
Novi, Michigan 48374  
Ph: (248)349-4500 • Fax: (248)349-1429

Novi • Wyandotte • Muskegon  
Lansing • Gaylord • Sault Ste. Marie  
Williamsport, PA • Tampa, FL  
www.sidockgroup.com



Client:  
City of Taylor  
23555 Goddard Rd.  
Taylor, MI 48180

Project:  
City of Taylor  
Animal Shelter  
Remodel & Expansion

25555 Northline Rd.  
Taylor, MI 48180

Seal:



Date: 12/21/2023 Issued For: OWNER REVIEW  
01/17/2024 PERMIT SET

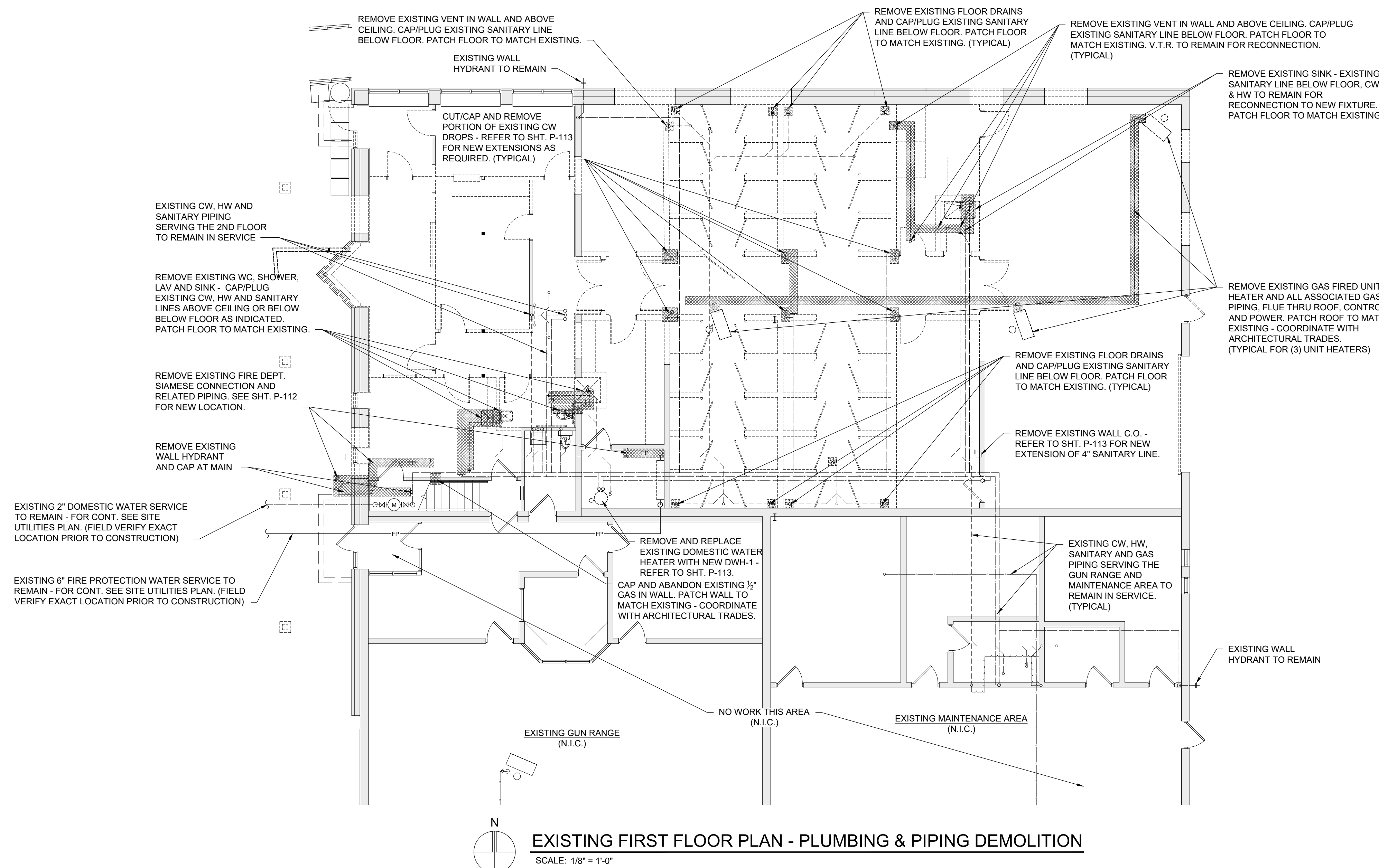
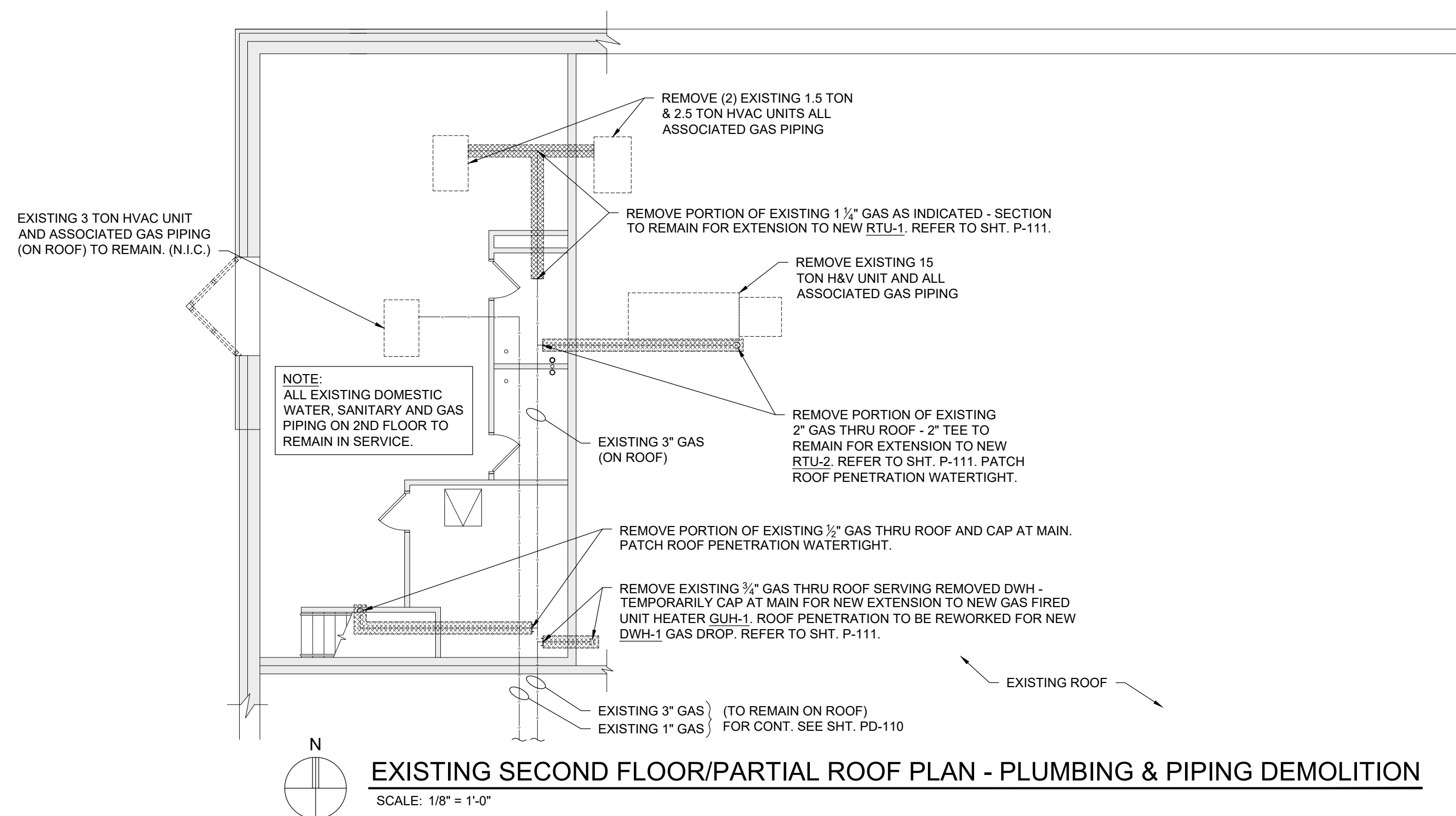
Drawn: KWG  
Checked: CM  
Approved: WAD

Sheet Title:  
**PLUMBING & PIPING  
DEMOLITION  
FLOOR PLANS**

Project Number: 22712.A

Sheet Number: **PD-110**

THIS MATERIAL IS THE EXCLUSIVE PROPERTY OF SIDOCK GROUP, INC. AND  
CANNOT BE REPRODUCED, COPIED, OR USED IN ANY MANNER WITHOUT THE  
PRIOR WRITTEN CONSENT OF SIDOCK GROUP, INC. © 2023







Sidock Group

ARCHITECTS • ENGINEERS • CONSULTANTS

Corporate Headquarters  
45650 Grand River Ave.  
Novi, Michigan 48374  
Ph: (248)349-4500 • Fax: (248)349-1429

Novi • Wyandotte • Muskegon  
Lansing • Gaylord • Sault Ste. Marie  
Williamsport, PA • Tampa, FL  
www.sidockgroup.com



Client:

City of Taylor  
23555 Goddard Rd.  
Taylor, MI 48180

Project:

City of Taylor  
Animal Shelter  
Remodel & Expansion

25555 Northline Rd.  
Taylor, MI 48180

Seal:



Date: 12/21/2023 Issued For  
01/17/2024 OWNER REVIEW  
PERMIT SET

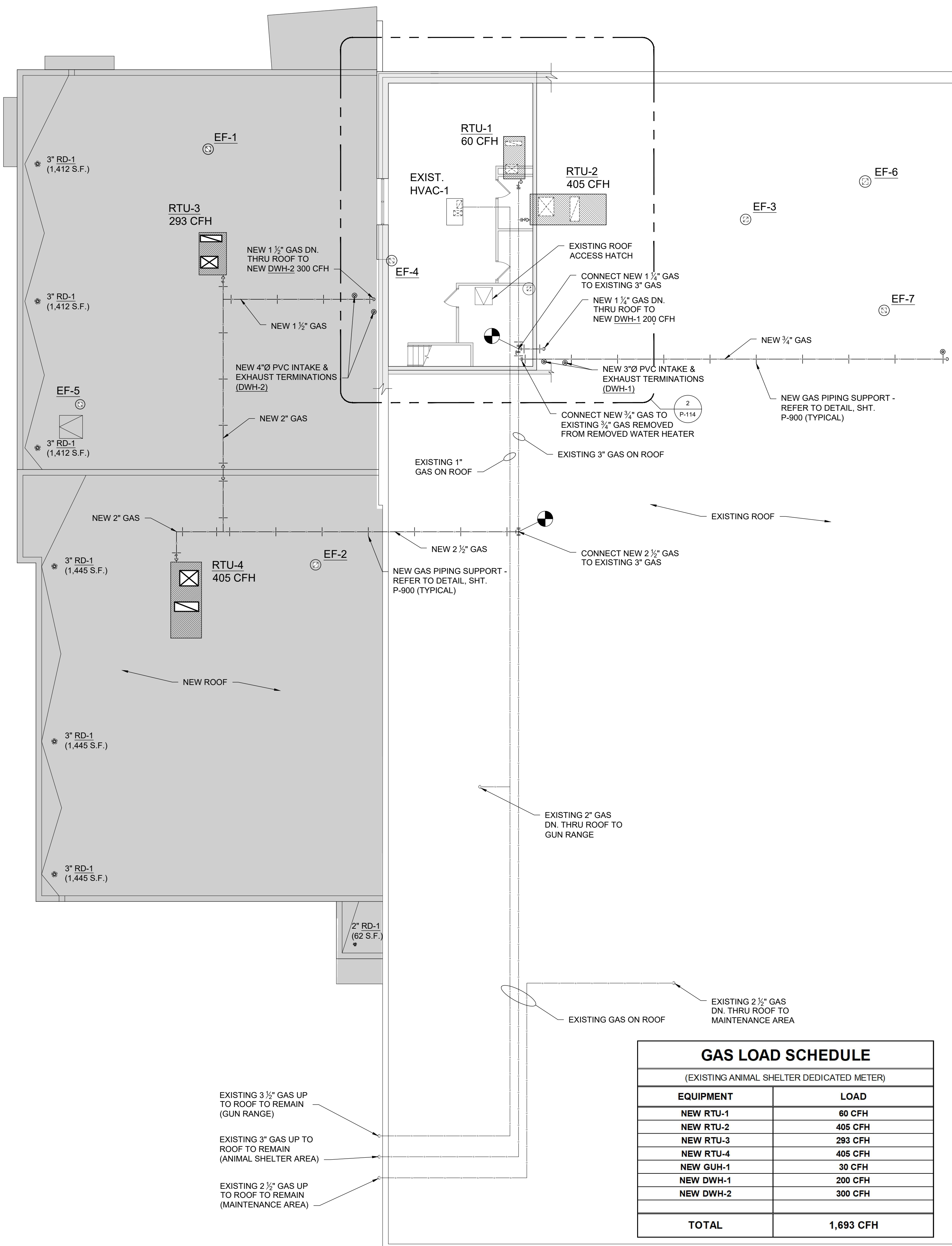
Drawn: KWG  
Checked: CM  
Approved: WAD

Sheet Title:  
**OVERALL  
PLUMBING & PIPING  
FLOOR PLANS**

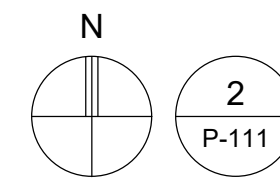
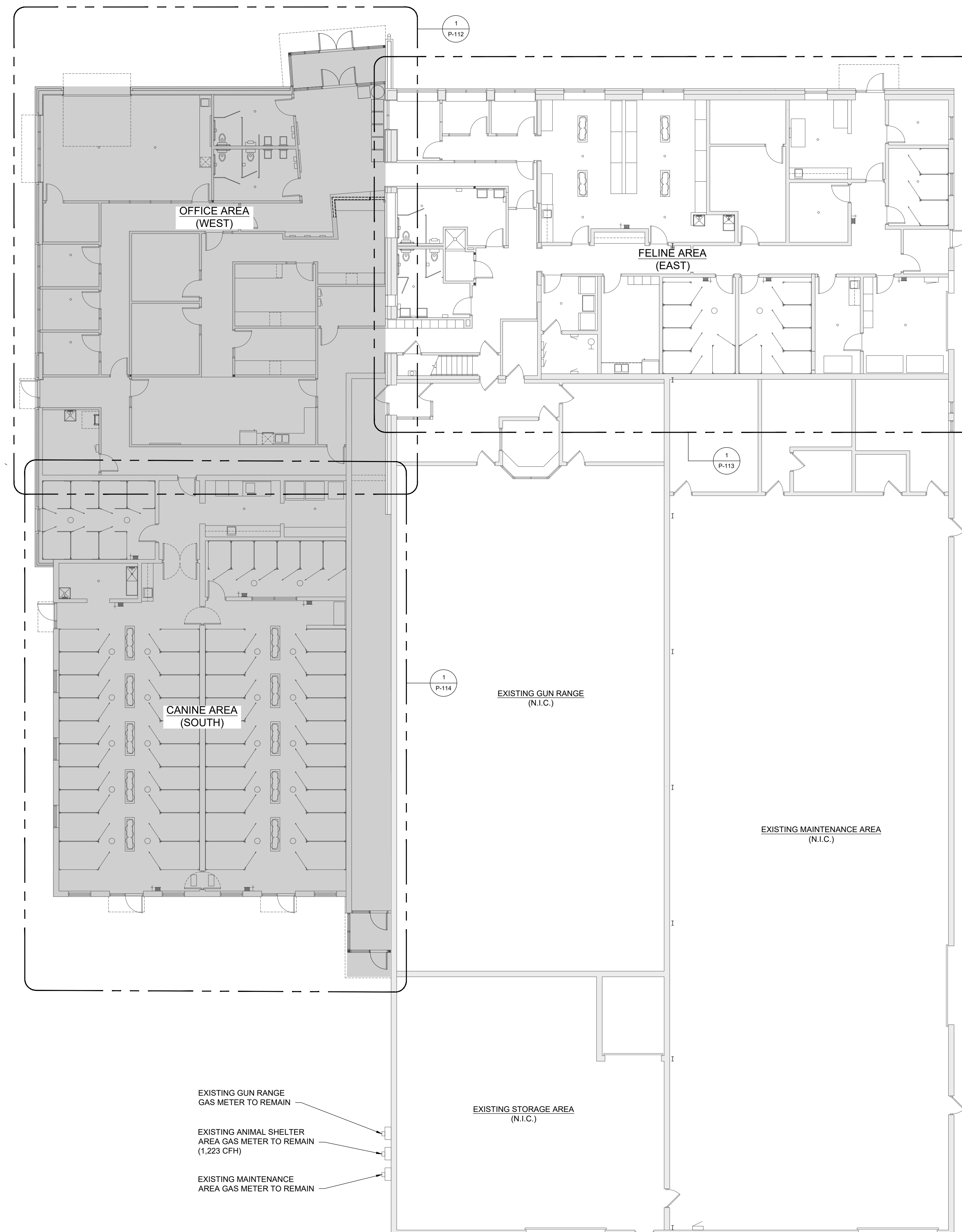
Project Number: 22712.A

Sheet Number: **P-111**

THIS MATERIAL IS THE EXCLUSIVE PROPERTY OF SIDOCK GROUP, INC. AND CANNOT BE REPRODUCED, COPIED, OR USED IN ANY MANNER WITHOUT THE PRIOR WRITTEN CONSENT OF SIDOCK GROUP, INC. © 2023

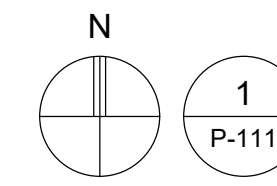


GAS LOAD SCHEDULE	
(EXISTING ANIMAL SHELTER DEDICATED METER)	
EQUIPMENT	LOAD
NEW RTU-1	60 CFH
NEW RTU-2	405 CFH
NEW RTU-3	293 CFH
NEW RTU-4	405 CFH
NEW GUH-1	30 CFH
NEW DWH-1	200 CFH
NEW DWH-2	300 CFH
<b>TOTAL</b>	<b>1,693 CFH</b>



PLUMBING & PIPING OVERALL SECOND FLOOR/ROOF PLAN

SCALE: 3/32" = 1'-0"



PLUMBING & PIPING OVERALL FIRST FLOOR PLAN

SCALE: 3/32" = 1'-0"

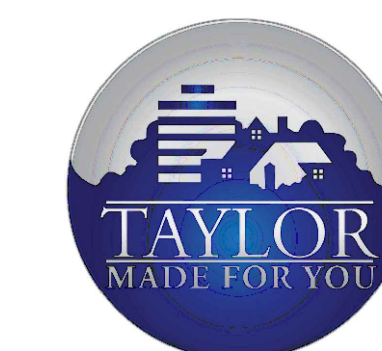




**Sidock Group**  
ARCHITECTS • ENGINEERS • CONSULTANTS

Corporate Headquarters  
45650 Grand River Ave.  
Novi, Michigan 48374  
Ph: (248)349-4500 • Fax: (248)349-1429

Novi • Wyandotte • Muskegon  
Lansing • Gaylord • Sault Ste. Marie  
Williamsport, PA • Tampa, FL  
www.sidockgroup.com



Client:

City of Taylor  
23555 Goddard Rd.  
Taylor, MI 48180

Project:

City of Taylor  
Animal Shelter  
Remodel & Expansion

25555 Northline Rd.  
Taylor, MI 48180

Seal:



Date: 12/21/2023 Issued For: OWNER REVIEW  
11/17/2024 PERMIT SET

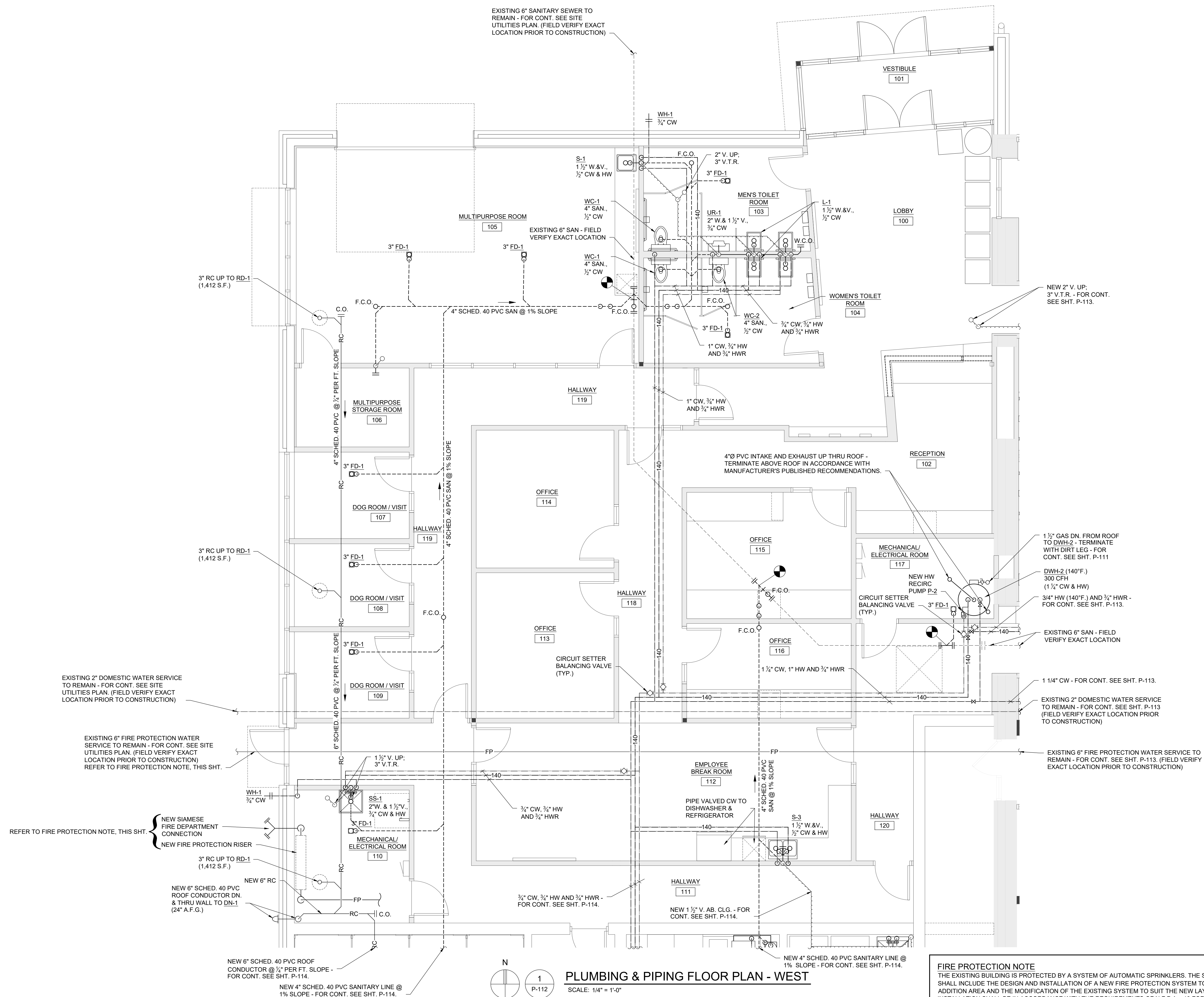
Drawn: KWG  
Checked: CM  
Approved: WAD

Sheet Title:  
**PLUMBING & PIPING FLOOR PLAN - WEST**

Project Number: 22712.A

Sheet Number: **P-112**

THIS MATERIAL IS THE EXCLUSIVE PROPERTY OF SIDOCK GROUP, INC. AND CANNOT BE REPRODUCED, COPIED, OR USED IN ANY MANNER WITHOUT THE PRIOR WRITTEN CONSENT OF SIDOCK GROUP, INC. © 2023



EXISTING 6" SANITARY SEWER TO REMAIN - FOR CONT. SEE SITE UTILITIES PLAN. (FIELD VERIFY EXACT LOCATION PRIOR TO CONSTRUCTION)

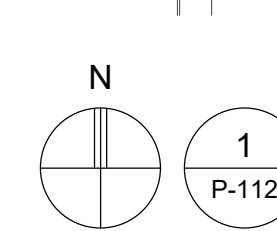
EXISTING 2" DOMESTIC WATER SERVICE TO REMAIN - FOR CONT. SEE SITE UTILITIES PLAN. (FIELD VERIFY EXACT LOCATION PRIOR TO CONSTRUCTION)

EXISTING 6" FIRE PROTECTION WATER SERVICE TO REMAIN - FOR CONT. SEE SITE UTILITIES PLAN. (FIELD VERIFY EXACT LOCATION PRIOR TO CONSTRUCTION) REFER TO FIRE PROTECTION NOTE, THIS SHT.

REFER TO FIRE PROTECTION NOTE, THIS SHT. { NEW SIAMESE FIRE DEPARTMENT CONNECTION  
NEW FIRE PROTECTION RISER

NEW 6" SCHED. 40 PVC ROOF CONDUCTOR @ 1/2" PER FT. SLOPE - FOR CONT. SEE SHT. P-114.

NEW 4" SCHED. 40 PVC SANITARY LINE @ 1% SLOPE - FOR CONT. SEE SHT. P-114.



**PLUMBING & PIPING FLOOR PLAN - WEST**  
SCALE: 1/4" = 1'-0"

**FIRE PROTECTION NOTE**  
THE EXISTING BUILDING IS PROTECTED BY A SYSTEM OF AUTOMATIC SPRINKLERS. THE SCOPE OF THIS PROJECT SHALL INCLUDE THE DESIGN AND INSTALLATION OF A NEW FIRE PROTECTION SYSTEM TO COVER THE BUILDING ADDITION AREA AND THE MODIFICATION OF THE EXISTING SYSTEM TO SUIT THE NEW LAYOUT. DESIGN AND INSTALLATION SHALL BE IN ACCORDANCE WITH THE REQUIREMENTS OF N.F.P.A. - 13 FOR AN ORDINARY HAZARD, GROUP 1 CLASSIFICATION. THE FIRE PROTECTION CONTRACTOR SHALL BE RESPONSIBLE FOR THE ENTIRE SYSTEM DESIGN, APPROVAL AND INSTALLATION AND SHALL SUBMIT TO THE ARCHITECT/ENGINEER FOR RECORD DESIGN DRAWINGS AND HYDRAULIC CALCULATIONS BEARING THE APPROVAL OF THE LOCAL FIRE AUTHORITY.





Sidock Group

ARCHITECTS • ENGINEERS • CONSULTANTS

Corporate Headquarters  
45650 Grand River Ave.  
Novi, Michigan 48374  
Ph: (248)349-4500 • Fax: (248)349-1429

Novi • Wyandotte • Muskegon  
Lansing • Gaylor • Sault Ste. Marie  
Williamsport, PA • Tampa, FL  
www.sidockgroup.com



Client:

City of Taylor  
23555 Goddard Rd.  
Taylor, MI 48180

Project:

City of Taylor  
Animal Shelter  
Remodel & Expansion

25555 Northline Rd.  
Taylor, MI 48180

Seal:



Date: 12/21/2023  
11/17/2024

Issued For  
OWNER REVIEW  
PERMIT SET

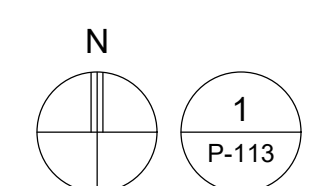
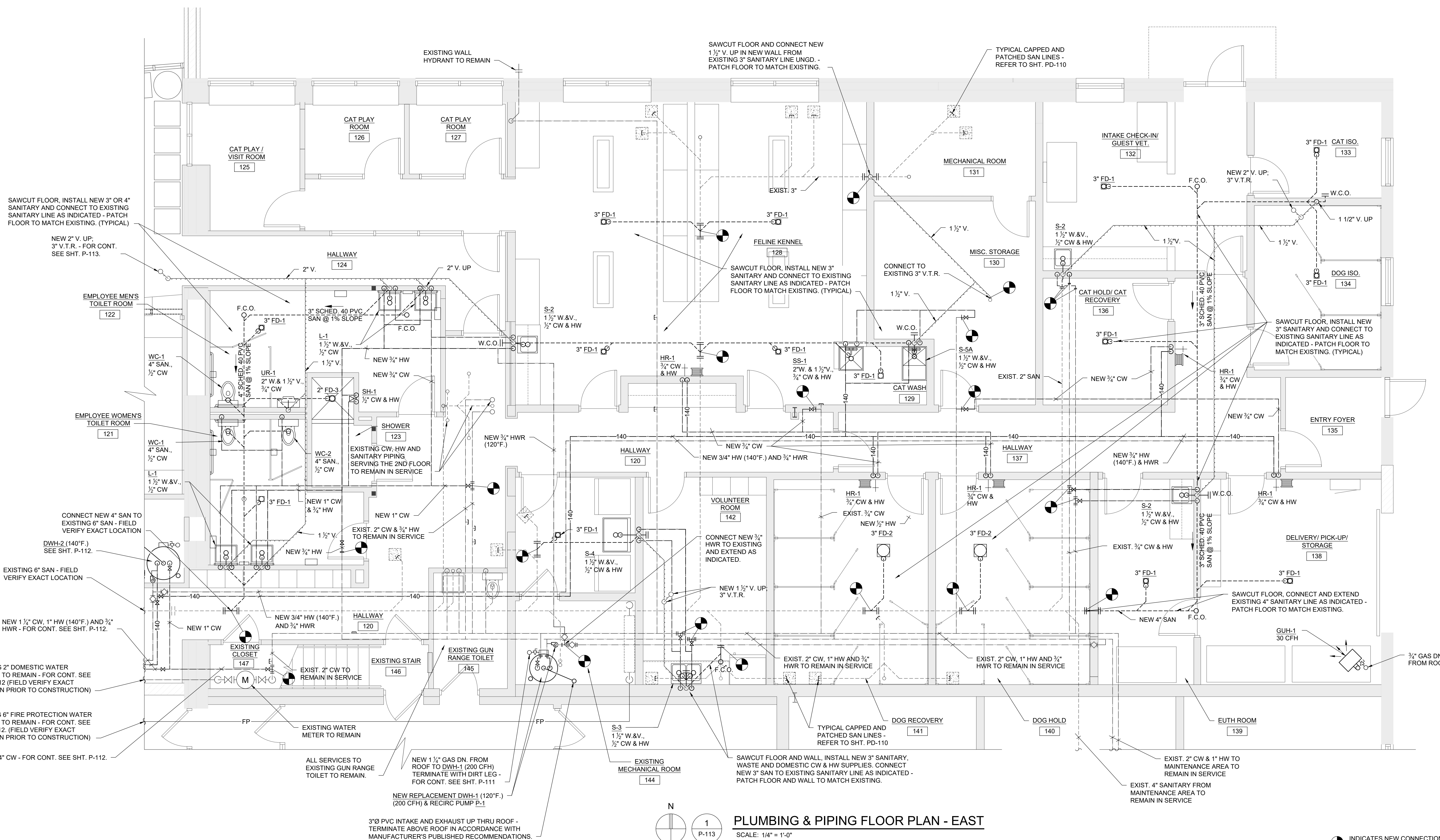
Drawn: KWG  
Checked: CM  
Approved: WAD

Sheet Title:  
PLUMBING & PIPING  
FLOOR PLAN -  
EAST

Project Number: 22712.A

Sheet Number: P-113

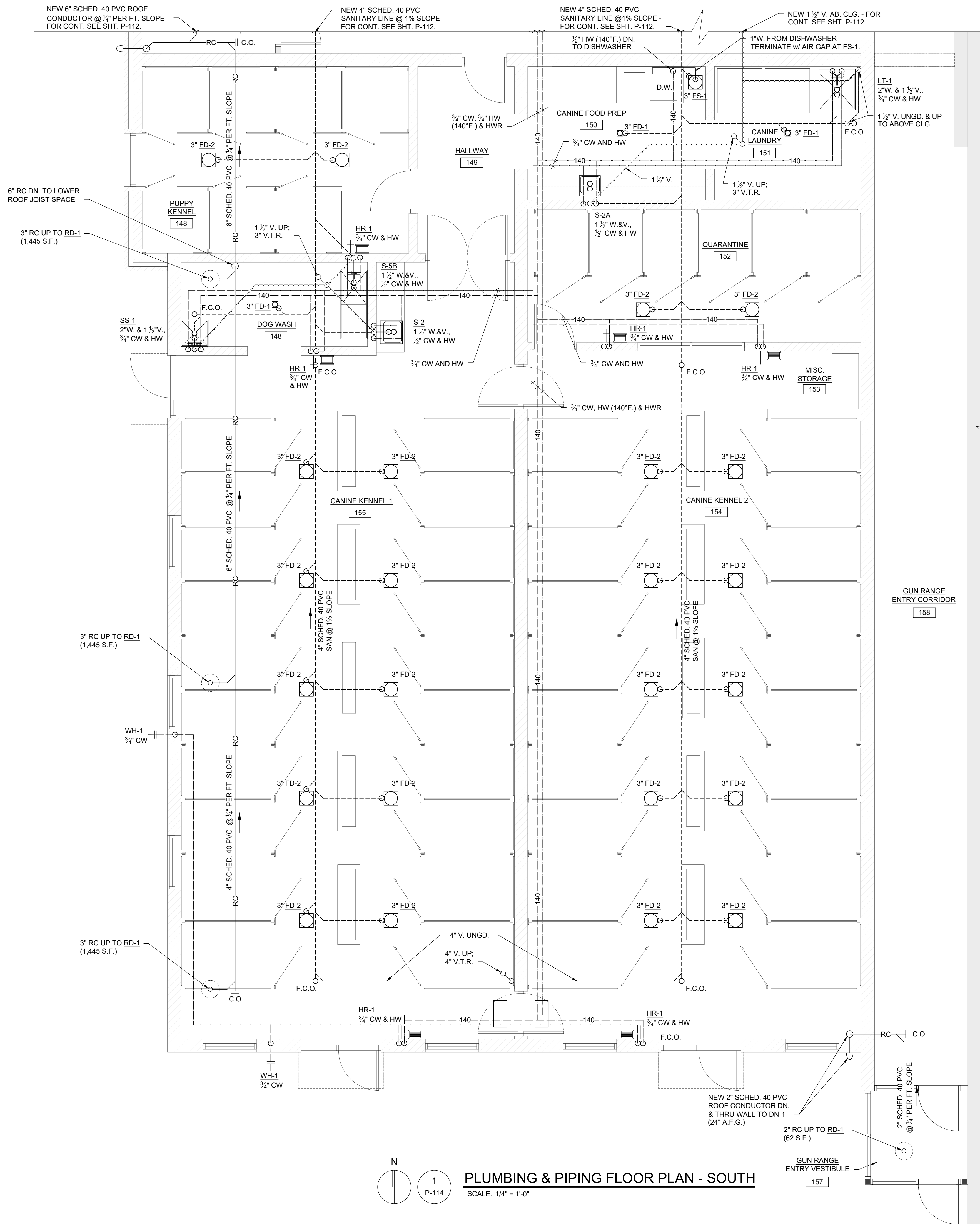
This material is the exclusive property of Sidock Group, Inc. and shall not be reproduced, copied, or used in any manner without the prior written consent of Sidock Group, Inc. © 2023



**PLUMBING & PIPING FLOOR PLAN - EAST**  
SCALE: 1/4" = 1'-0"

INDICATES NEW CONNECTION TO EXISTING PIPING SYSTEM





**Sidcock Group**  
 ARCHITECTS • ENGINEERS • CONSULTANTS

Corporate Headquarters  
 45650 Grand River Ave.  
 Novi, Michigan 48374  
 Ph: (248)349-4500 • Fax: (248)349-1429

Novi • Wyandotte • Muskegon  
 Lansing • Gaylor • Sault Ste. Marie  
 Williamsport, PA • Tampa, FL  
 www.sidcockgroup.com



Client:  
 City of Taylor  
 23555 Goddard Rd.  
 Taylor, MI 48180

Project:  
 City of Taylor  
 Animal Shelter  
 Remodel & Expansion

25555 Northline Rd.  
 Taylor, MI 48180



Date: 12/21/2023 Issued For: OWNER REVIEW  
 01/17/2024 PERMIT SET

Drawn: KWG  
 Checked: CM  
 Approved: WAD

Sheet Title:  
**PLUMBING & PIPING  
 FLOOR PLAN -  
 SOUTH**

Project Number: 22712.A

Sheet Number: **P-114**

This material is the exclusive property of Sidcock Group, Inc. and shall not be reproduced, copied, or used in any way without the prior written consent of Sidcock Group, Inc. © 2023

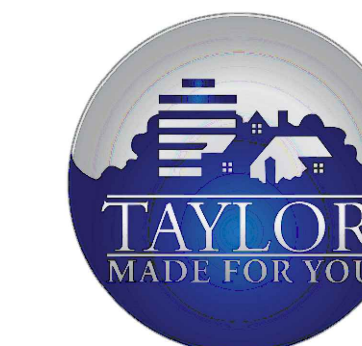




**Sidock Group**  
ARCHITECTS • ENGINEERS • CONSULTANTS

Corporate Headquarters  
45650 Grand River Ave.  
Novi, Michigan 48374  
Ph: (248)349-4500 • Fax: (248)349-1429

Novi • Wyandotte • Muskegon  
Lansing • Gaylord • Sault Ste. Marie  
Williamsport, PA • Tampa, FL  
www.sidockgroup.com



Client:  
**City of Taylor**  
23555 Goddard Rd.  
Taylor, MI 48180

Project:  
**City of Taylor**  
Animal Shelter  
Remodel & Expansion

25555 Northline Rd.  
Taylor, MI 48180

Seal:



Date: 12/21/2023 Issued For  
11/17/2024 OWNER REVIEW  
PERMIT SET

Drawn: KWG  
Checked: CM  
Approved: WAD

Sheet Title:  
**PLUMBING & PIPING**  
SCHEDULES &  
DIAGRAMS

Project Number: 22712.A

Sheet Number: P-900

THIS MATERIAL IS THE EXCLUSIVE PROPERTY OF SIDOCK GROUP, INC. AND  
CANNOT BE REPRODUCED, COPIED, OR USED IN ANY MANNER WITHOUT THE  
PRIOR WRITTEN CONSENT OF SIDOCK GROUP, INC. © 2023

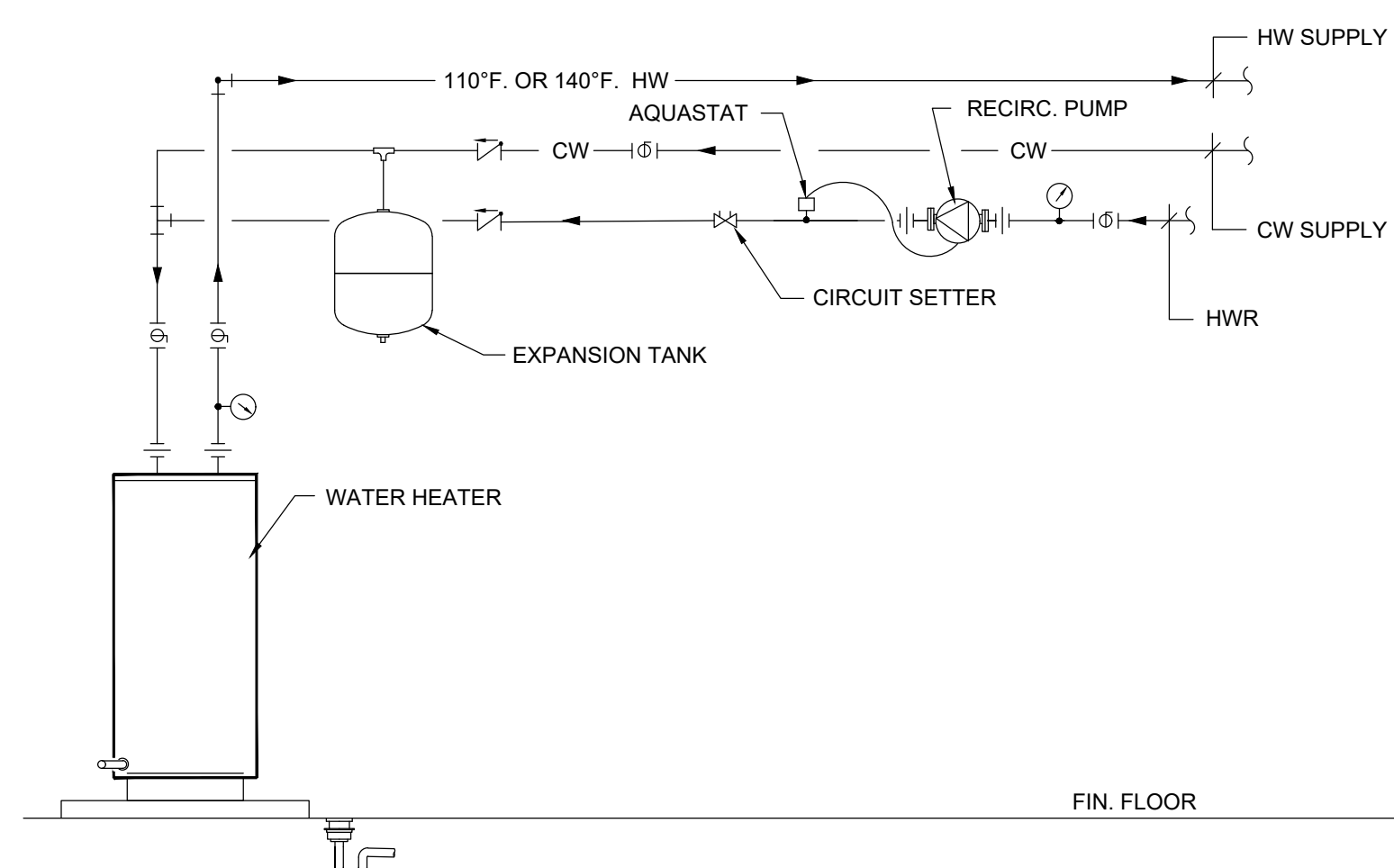
**GAS FIRED UNIT HEATER SCHEDULE**

TAG	SERVING	TYPE	BTUH OUTPUT	MOUNTING		GAS DATA		ELECTRICAL			DESIGN BASIS		REMARKS
				ANGLE	HEIGHT	TYPE	INPUT CFH	VOLT	PHASE	AMPS	MAKE	MODEL NUMBER	
GUH-1	DELIVERY/PICK-UP/STORAGE 138	POWER VENTED	24,000	45 DEGREES	9'-0"	NATURAL	30	120	1	3.7	MODINE	HDS30	24V DIRECT SPARK IGNITION CONTROL w/ PROGRAMMABLE THERMOSTAT; ANGLE MOUNTING KIT; MODINE 3" VERTICAL CONCENTRIC VENT KIT

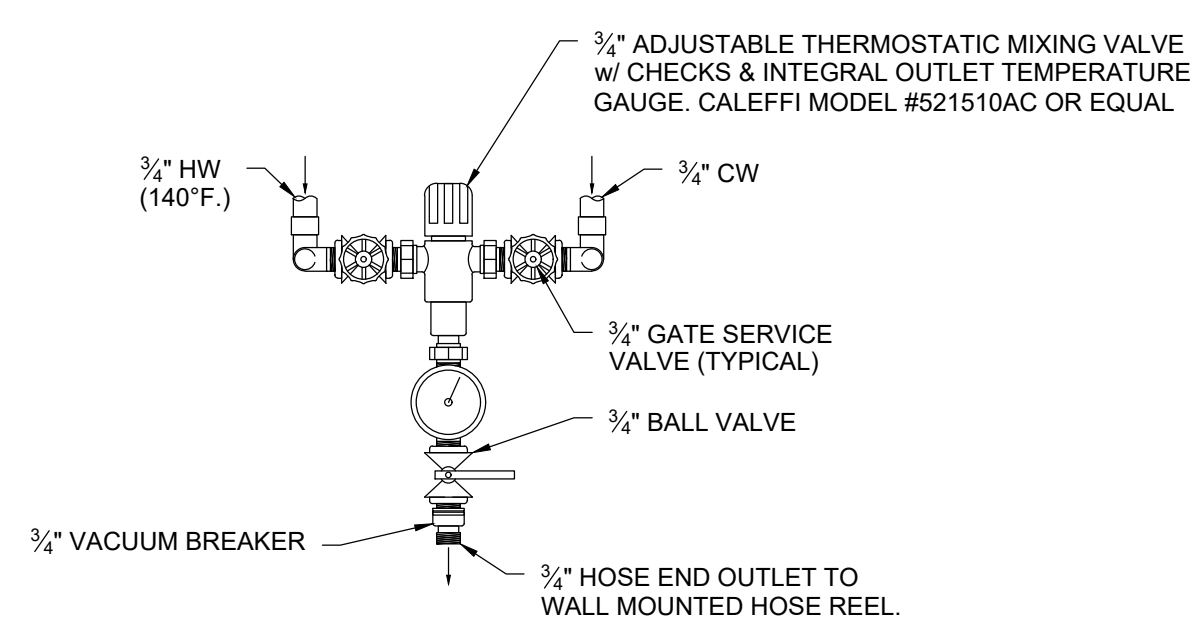
**GAS FIRED DOMESTIC WATER HEATER SCHEDULE**

TAG	SYSTEM SERVED	LOCATION	MANUFACTURER AND MODEL NUMBER	CAPACITIES		GAS DATA		NOTES/ACCESSORIES	
				RECOVERY GPH	GALLON CAPACITY	TEMP. RISE	CFH INPUT		TYPE
DWH-1	DOMESTIC WATER (110d.F.)	EXISTING MECHANICAL ROOM 144	A.O. SMITH BTH-199A Mxi CYCLONE	392	100	60 deg F	200	NATURAL	A, B, C, D
DWH-2	DOMESTIC WATER (140d.F.)	MECHANICAL/ELECTRICAL ROOM 117	A.O. SMITH BTH-300A Mxi CYCLONE	388.00	119	90 deg F	300	NATURAL	A, D, E, F

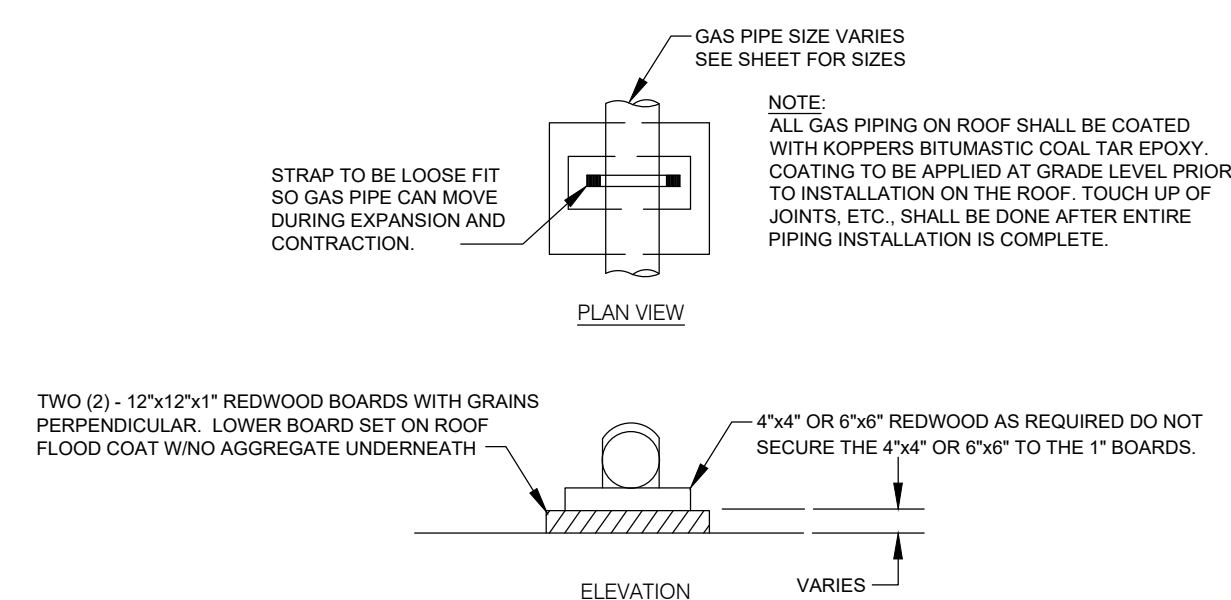
**NOTES:**  
**A.** ASME T&P RELIEF VALVE  
**B.** 3" PVC INTAKE & EXHAUST w/ ROOF TERMINATIONS  
**C.** WATTS MODEL #DETA-5 EXPANSION TANK  
**D.** TACO MODEL #003 DOMESTIC RECIRC PUMP w/ STRAP-ON AQUASTAT. 1/40 HP, 115V/1ph./60hz./0.43A  
**E.** 4" PVC INTAKE & EXHAUST w/ ROOF TERMINATIONS  
**F.** WATTS MODEL #DETA-20 EXPANSION TANK



**TYPICAL DOMESTIC WATER HEATER PIPING DIAGRAM**  
SCALE: NONE



**TYPICAL HOSE REEL HR-1 PIPING DIAGRAM**  
SCALE: NONE  
 NOTE:  
 1. SECURELY BRACKET BOTH INLET AND OUTLET PIPING TO MASONRY WALL WITH BALL VALVE AT 48" A.F.F.  
 2. MOUNT HOSE REEL AT 7'-0" A.F.F. TO BOTTOM OF REEL.



**DETAIL OF GAS PIPING ON ROOF**  
NO SCALE

**PLUMBING FIXTURE SCHEDULE**

TAG	FIXTURE	FIXTURE (DESIGN BASIS)			TRIM (DESIGN BASIS)			FIXTURE CONNECTION SIZES				REMARKS	
		MFR.	MODEL NAME	MODEL NO.	TRIM	MFR.	MODEL NO.	ELEC REQ	CW	HW	WASTE		VENT
WC-1 (A.D.A.)	WATER CLOSET - TANK TYPE (ADA)	AMERICAN STANDARD	CHAMPION PRO 2-PIECE 1.28 GPF CHAIR HEIGHT ELONGATED TOILET	211AA104 (1.28 GPF)	SLOW-CLOSE ELONGATED SEAT	AMERICAN STANDARD	5359C051H		1/2		4	2	A,B,C
WC-2	WATER CLOSET - TANK TYPE	AMERICAN STANDARD	CHAMPION PRO 2-PIECE 1.6 GPF STANDARD HEIGHT ELONGATED TOILET	211CA004 (1.6 GPF)	SLOW-CLOSE ELONGATED SEAT	AMERICAN STANDARD	5359C051H		1/2		4	2	A,B,C
UR-1	URINAL-WALL MOUNTED (ADA)	AMERICAN STANDARD	WASHBROOK 0.125 - 1.0 GPF TOP SPUD URINAL	6590001.020 (1.0 GPF)	FLUSH VALVE	SLOAN ROYAL	186-1 (1.0 GPF)		3/4		2	1 1/2	A
L-1 (A.D.A.)	WALL MOUNT LAVATORY	AMERICAN STANDARD	LUCERNE	355.012	4" CENTERSET SINGLE HANDLE FAUCET w/ LEVER HANDLE (0.5 GPFM)	AMERICAN STANDARD	7385050.002		1/2	1/2	1 1/2	1 1/2	A,B,C,D,E,F,G,H
S-1	15"x15"x7 1/8" 18GA. DEEP SINGLE COMPARTMENT SS SINK	ELKAY	LUSTERTONE CLASSIC STAINLESS STEEL 15" x 15" x 7-1/8" 1-HOLE SINGLE BOWL DROP-IN BAR SINK w/ FAUCET	BLR150C	FAUCET	ELKAY	LKD2223C (INCLUDED)		1/2	1/2	1 1/2	1 1/2	A,B,E,H
S-2	17"x20"x7 5/8" DEEP 18GA. SINGLE COMPARTMENT SS SINK	ELKAY	LUSTERTONE CLASSIC STAINLESS STEEL 17" x 20" x 7-5/8" 2-HOLE SINGLE BOWL DROP-IN SINK w/ FAUCET	LR1720C	FAUCET	ELKAY	LK406GN04T4C (INCLUDED)		1/2	1/2	1 1/2	1 1/2	A,B,E,H
S-3	33"x22"x8 1/8" DEEP 18 GA. DOUBLE COMPARTMENT SS SINK	ELKAY	LUSTERTONE CLASSIC STAINLESS STEEL 33" x 22" x 8-1/8" 3-HOLE DOUBLE BOWL DROP-IN SINK	LR3322PD	FAUCET	DELTA	2100LF		1/2	1/2	1 1/2	1 1/2	A,B,E,H
S-4	39" x 27-1/2" x 14" DEEP 14 GA. FLOOR MOUNT SINGLE COMPARTMENT SS SCULLERY SINK	ELKAY	WELDBILT STAINLESS STEEL 39" x 27-1/2" x 14" FLOOR MOUNT SINGLE COMPARTMENT SCULLERY SINK	WNSF81362	FAUCET STRAINER	ELKAY	LK940VS07T4S LKPDVR18B		1/2	1/2	1 1/2	1 1/2	A,E
S-5A	CAT WASH STATION	VECOR	34" S.S. PROFESSIONAL CAT GROOMING/WASH TUB w/ FAUCET AND WALK-IN RAMP	VV-PET34SSZKM	FAUCET	VECOR	INCLUDED		1/2	1/2	1 1/2	1 1/2	A,B,E,H
S-5B	DOG WASH STATION	VECOR	62" S.S. PROFESSIONAL DOG GROOMING/WASH TUB w/ FAUCET AND WALK-IN RAMP	VV-CWZG201BXG-62IN	FAUCET	VECOR	INCLUDED		1/2	1/2	1 1/2	1 1/2	A,B,E,H
SS-1	SERVICE SINK - FLOOR MOUNTED	MUSTEE		63M	SERVICE SINK FAUCET	MUSTEE	63.600A		1/2	1/2	2	1 1/2	I
SH-1	SHOWER	SYMMONS	TEMPTRON	C-96-1-X	FAUCET				3/4	3/4	2	-	J
RD-1	ROOF DRAIN	ZURN		Z164							-		K
DN-1	DOWNSPOUT NOZZLE	ZURN		Z199							-		K
WH-1	NON-FREEZE WALL HYDRANT	WOODFORD		B-67					0.75	-	-	-	K
FD-1	FLOOR DRAIN	ZURN		Z415-BZ1-DP							-	-	K
FD-2	FLOOR DRAIN	ZURN		ZN513-HL							-	-	K
FCO	CLEANOUT	ZURN		Z-1440							-	-	K,M
WCO	WALL CLEANOUT												K

- NOTES:**
- A. PROVIDE ALL SLEEVES, TEMPLATES, ETC. AS REQUIRED FOR ROUGH-IN OF FIXTURES. COORDINATE WITH ARCHITECTURAL TRADES.
  - B. PROVIDE BRASSCRAFT COMMERCIAL ANGLE STOP(S) WITH SUPPLY RISER(S)
  - C. COLOR: WHITE
  - D. PROVIDE BRASSCRAFT 1 1/4" OFFSET DRAIN WITH TAILPIECE
  - E. PROVIDE BRASSCRAFT 1 1/4" CHROME PLATED CAST BRASS P-TRAP
  - F. PROVIDE WRAP ON SUPPLIES AND WASTE PIPING EQUAL TO MCGUIRE "PRO-WRAP"
  - G. A.S. #7385.050 "RELIANT 3" LEVER HANDLE CENTERSET FAUCET w/ GRID DRAIN, 4" C.C.
  - H. POWERS HYDROGUARD #141-650 TEMPERING VALVE
  - I. 3" MOP SERVICE BASIN SEAL #65.309
  - J. BOTTOM OF SHOWER HEAD SHALL BE 6'-6" AFF. 2" FLOOR DRAIN WITH 2" TRAP & NICKEL BRONZE TOP.
  - K. SIZE AS NOTED ON DRAWINGS
  - L. PROVIDE SURE SEAL INLINE FLOOR DRAIN TRAP SEALER
  - M. FLOOR CLEANOUT WITH COUNTERSUNK PLUG - DURA COATED CAST IRON BODY WITH GAS AND WATERTIGHT ABS TAPERED THREAD PLUG, SIZE SAME AS DRAINAGE.