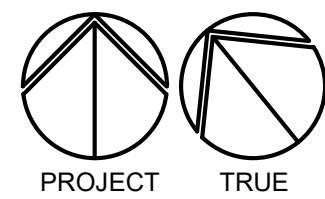
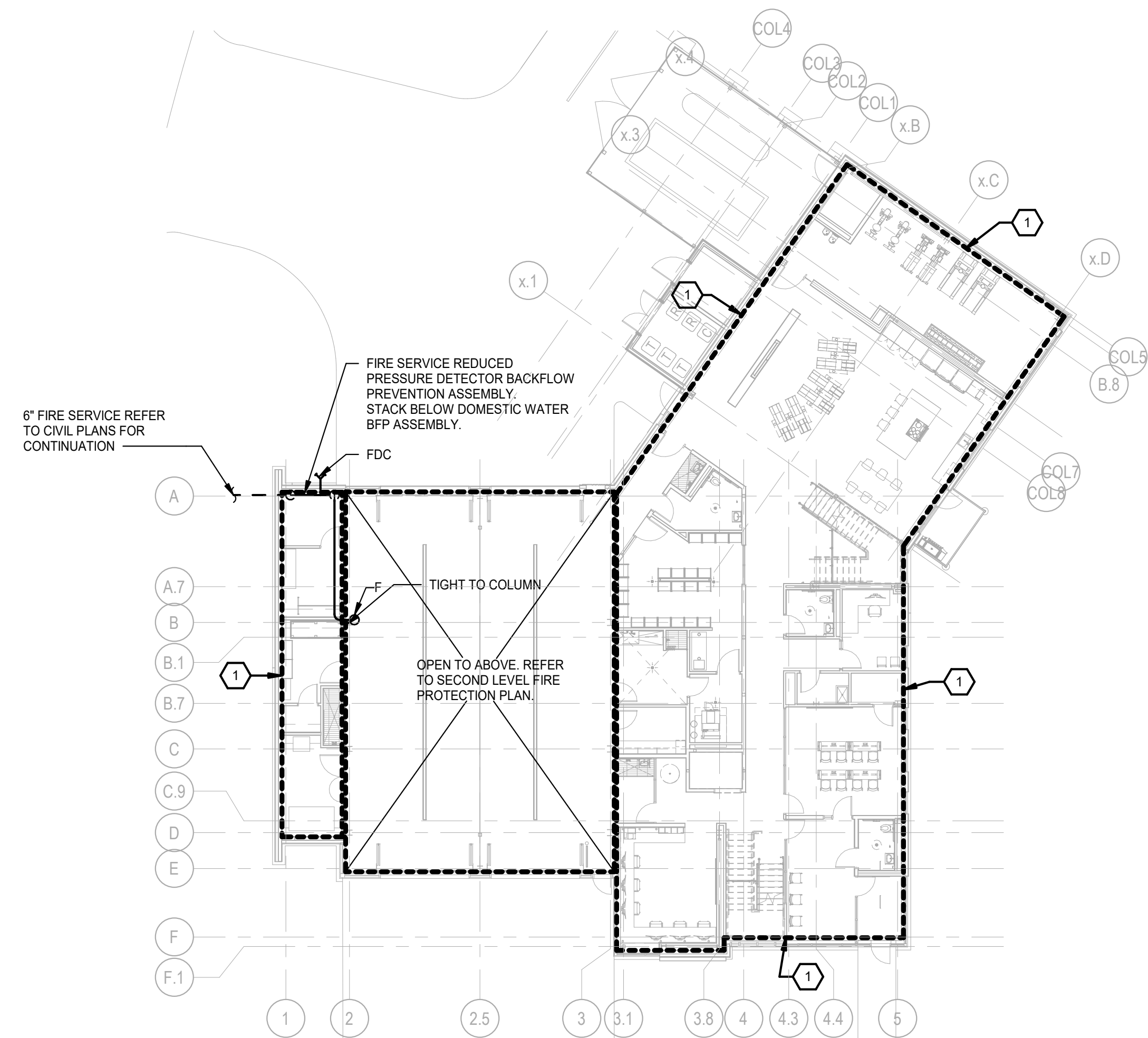
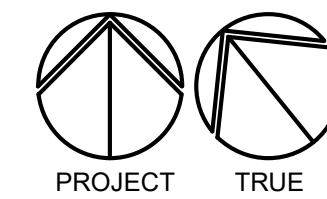
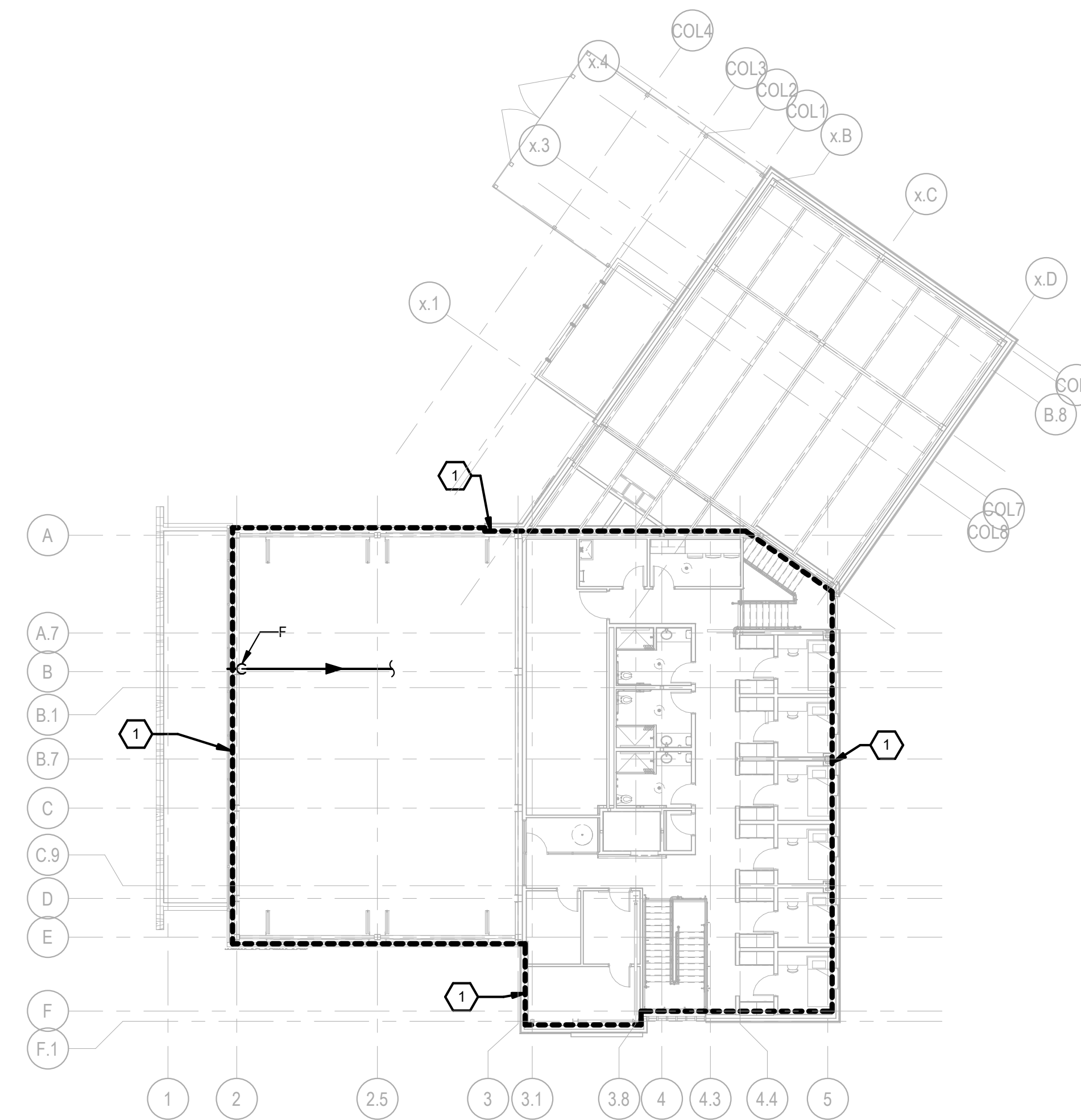


THE FOLLOWING DIMENSION EQUALS ONE INCH WHEN PRINTED TO SCALE.



FIRST LEVEL FIRE PROTECTION PLAN
SCALE: 1/16" = 1'-0"



SECOND LEVEL FIRE PROTECTION PLAN
SCALE: 1/16" = 1'-0"

FIRE PROTECTION GENERAL NOTES:

- 1 THESE DRAWINGS ARE DIAGRAMMATIC, AND REPRESENT THE GENERAL INTENT AND ARRANGEMENT OF SYSTEMS. THEY ARE NOT TO BE CONSIDERED FABRICATION/COORDINATION/SHOP DRAWINGS. COORDINATION WITH OTHER TRADES IS REQUIRED. PROVIDE THE ADDITIONAL FITTINGS AND OFFSETS THAT WILL BE REQUIRED TO COMPLETE EACH SYSTEM AND TO AVOID INTERFERENCES WITH ALL OTHER SYSTEMS INCLUDING THE STRUCTURE, SHEET METAL, OTHER PIPING SYSTEMS, ELECTRICAL CONDUITS, BUS DUCTS, CABLE TRAY, LIGHT FIXTURES, ETC. AND/OR OTHER SPACE CONSTRAINTS.
- 2 INSTALL SYSTEMS SUCH THAT REQUIRED CLEARANCE AND SERVICE ACCESS SPACE IS PROVIDED AROUND ALL MECHANICAL AND ELECTRICAL EQUIPMENT, AND AROUND ANY COMPONENTS WHICH REQUIRE SERVICE ACCESS.
- 3 NO SPRINKLER PIPING SHALL BE ROUTED THROUGH ELECTRICAL EQUIPMENT ROOMS, TELECOMMUNICATION EQUIPMENT ROOMS, ELEVATOR EQUIPMENT ROOMS OR SIMILAR ROOMS. ONLY SPRINKLER PIPING SERVING SPRINKLERS HEADS IN THOSE ROOMS SHALL BE ALLOWED.
- 4 PIPING SHALL NOT BE INSTALLED ABOVE ELECTRICAL TRANSFORMERS, SWITCHBOARDS, PANELBOARDS OR MOTOR CONTROL CENTERS.
- 5 MINIMUM RUN-OUT PIPE SIZE TO SPRINKLER HEADS SHALL BE 1".
- 6 ACCORDING TO THE MOST RECENT FLOW TEST INFORMATION, THE STATIC PRESSURE AVAILABLE AT THE CITY WATER MAIN AT THE STREET IS 90 PSIG. RESIDUAL PRESSURE WITH 1061 GPM FLOWING IS 82 PSIG. CONTRACTOR SHALL MAKE HIS OWN PRESSURE AND FLOW TEST PRIOR TO SYSTEM DESIGN.
- 7 FIRE PROTECTION WATER SERVICE ENTRANCE PIPING SHALL BE BURIED WITH DEPTH OF COVER OVER TOP OF PIPE OF AT LEAST 72", OR WITH TOP OF PIPE AT LEAST 12" BELOW LEVEL OF MAXIMUM FROST PENETRATION, OR AS REQUIRED BY AUTHORITIES HAVING JURISDICTION, WHICHEVER IS DEEPEST.

CONSTRUCTION KEY NOTES:

- 1 PROVIDE A FULLY FUNCTIONING FIRE PROTECTION SYSTEM IN ACCORDANCE WITH NFPA 13, THE LOCAL AUTHORITY HAVING JURISDICTION AND THE OWNERS INSURING AGENCY IN OUTLINED AREA INDICATED. REFER TO DIVISION 21 SPECIFICATIONS FOR FIRE PROTECTION REQUIREMENTS.

10/11/2024 11:48:20 AM BIM 360/720-43 Ann Arbor FS4/2021-0121-AAF-FS4-MEP-V21.rvt



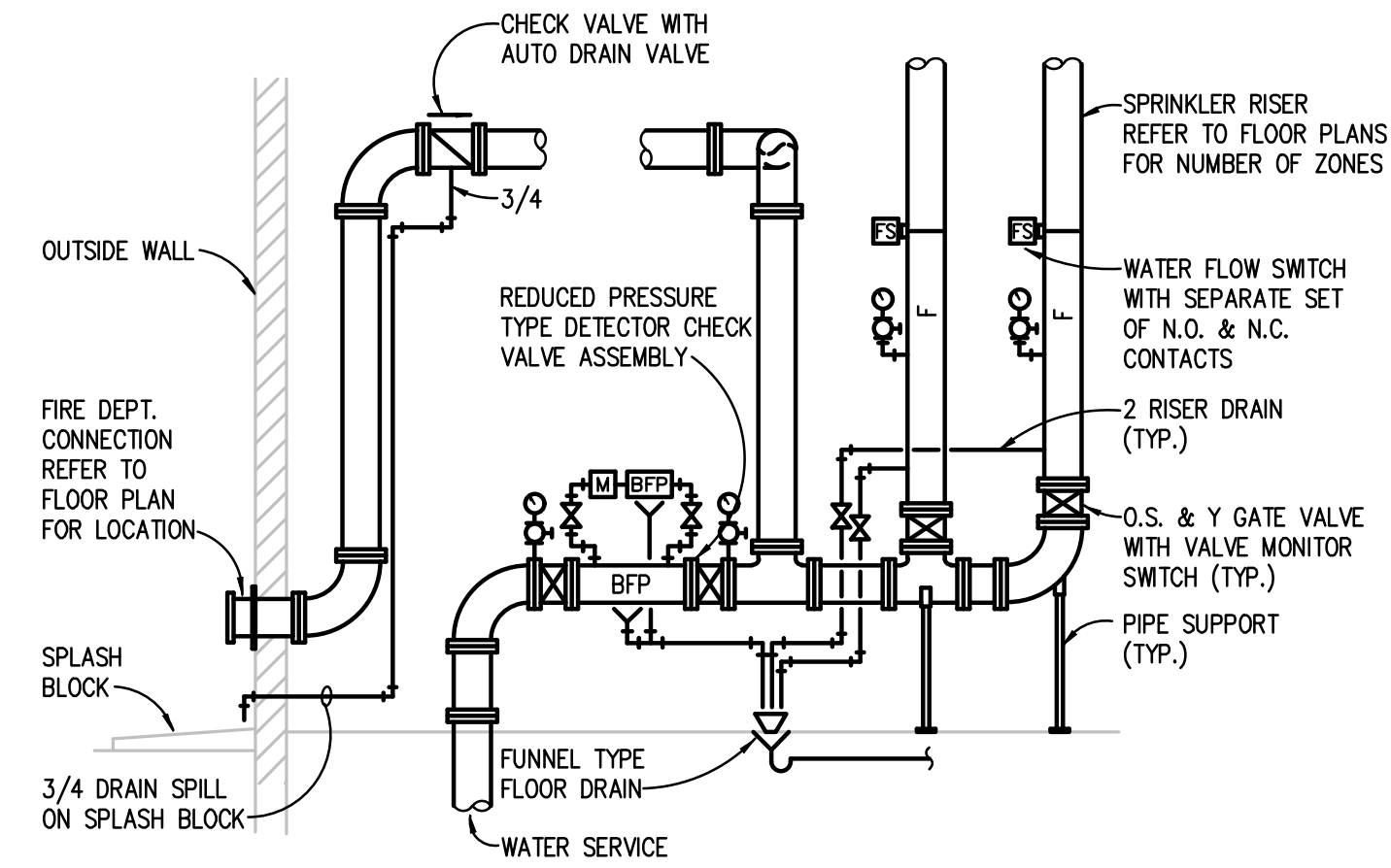
Project Number **21018**

Issue	Date
SCHEMATIC DESIGN	03/04/22
DESIGN DEVELOPMENT	05/26/23
BIDS/PERMITS	10/11/24

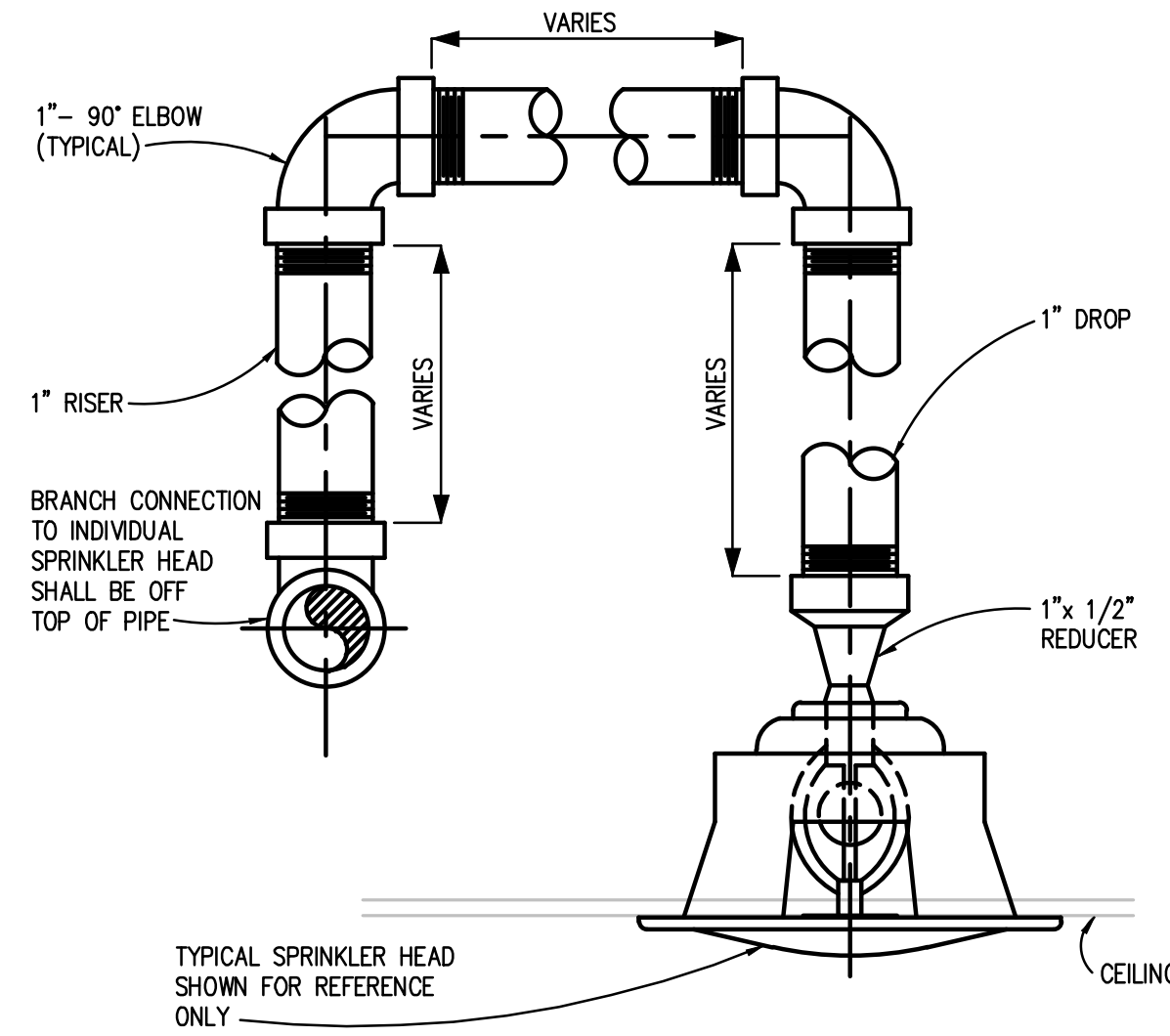
Drawn: ACF Checked: ACF

City of Ann Arbor
NEW FIRE STATION 4
 2415 S HURON PKWY
 ANN ARBOR, MI 48104
FIRE PROTECTION PLANS

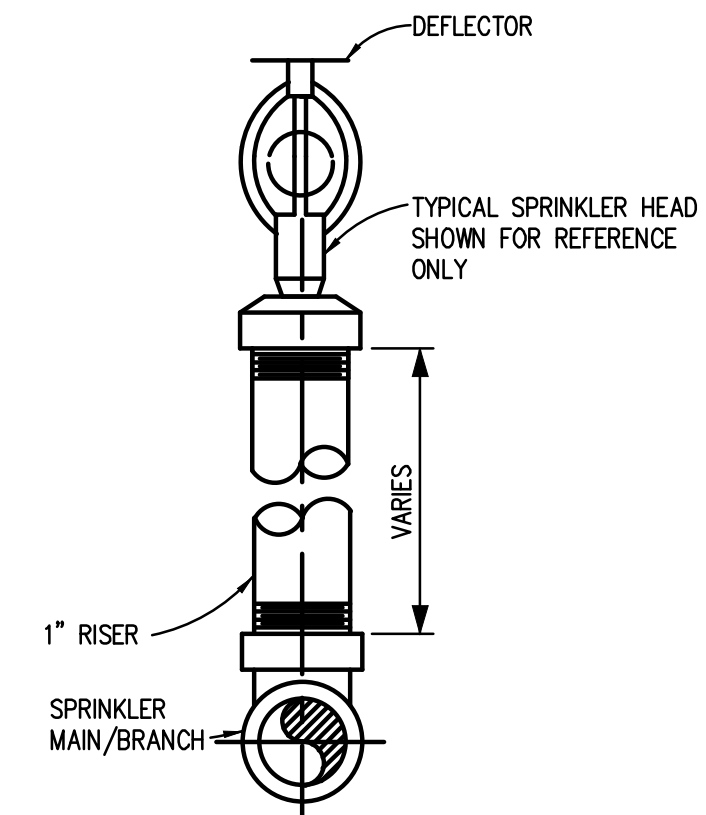
g:\2021\2021-0121-00\CAD\2021-0121-FP6-DT.dwg, FP6.01, 10/11/2024 10:48:44 AM, Rachel L. Wilson, Peter Basso Associates Inc.



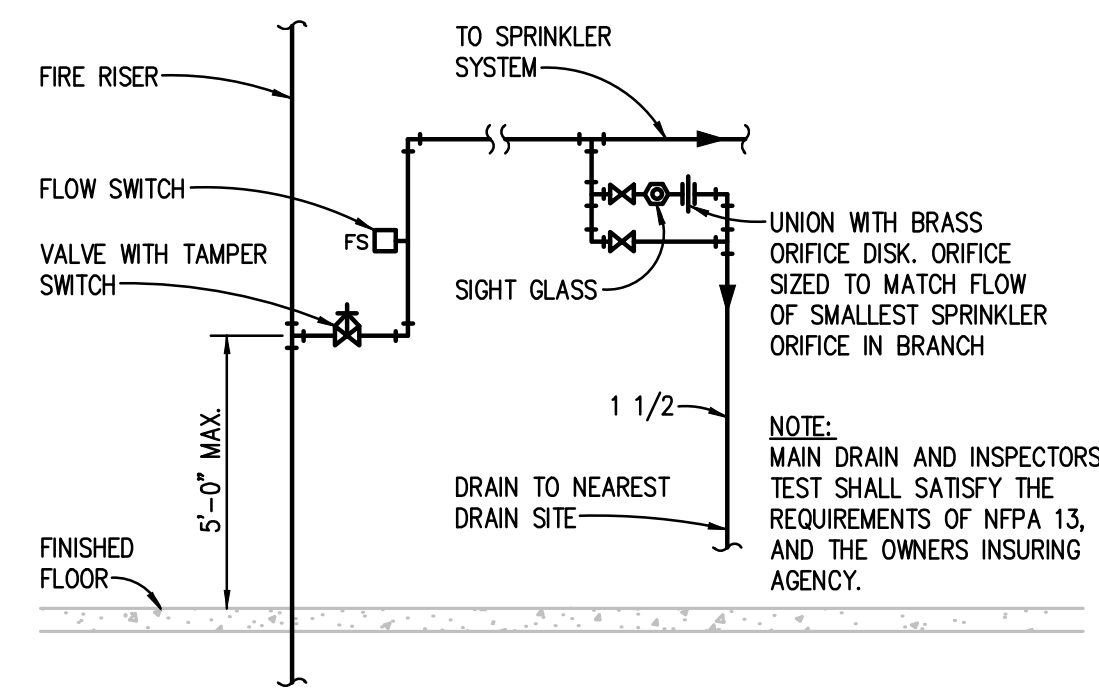
AUTOMATIC SPRINKLER RISER PIPING DIAGRAM
NO SCALE



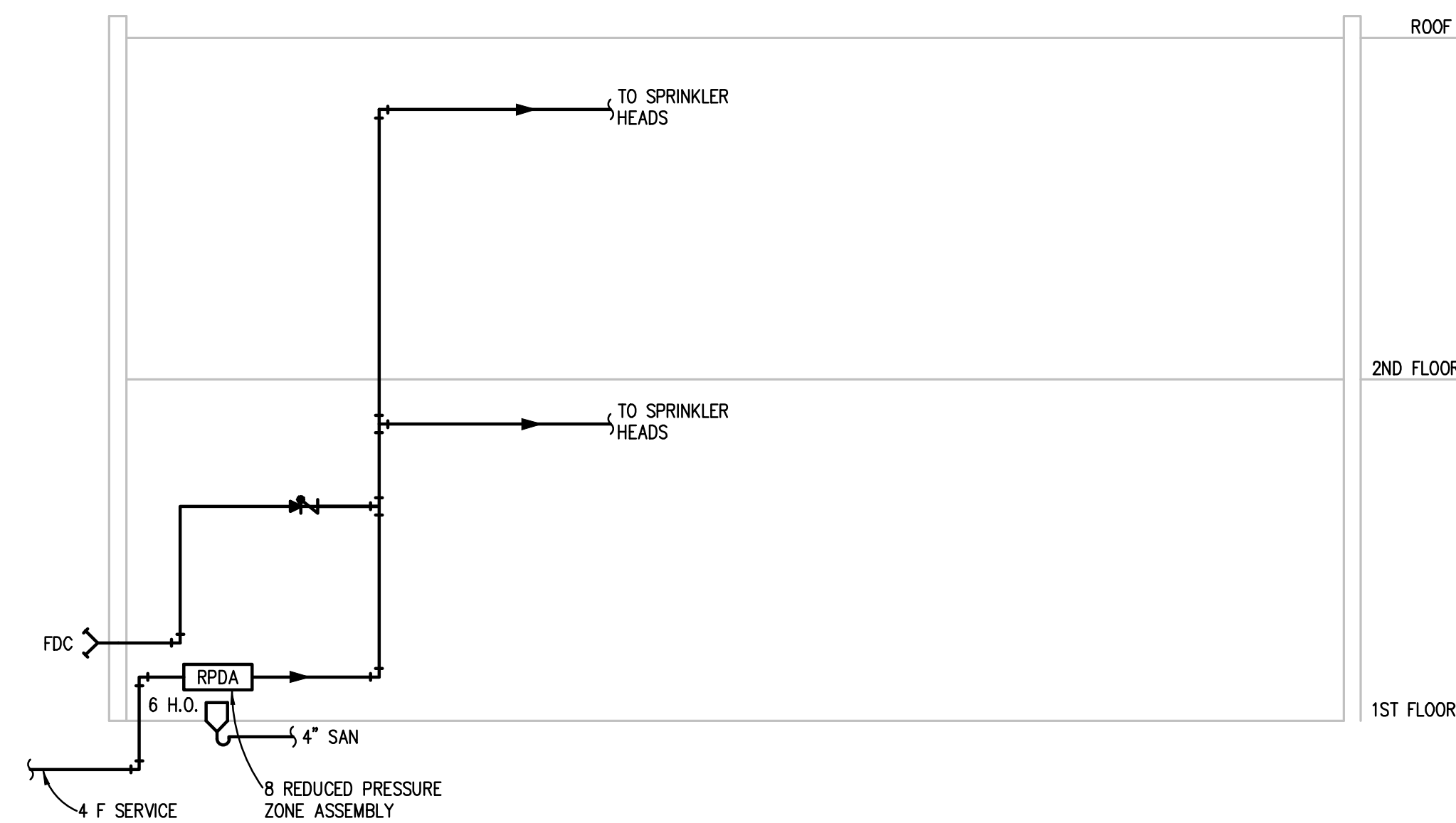
TYPICAL SPRINKLER PIPING DETAIL
NO SCALE



TYPICAL UPRIGHT SPRINKLER PIPING DETAIL
NO SCALE



DRAIN/INSPECTORS TEST DETAIL
NO SCALE



FIRE PROTECTION RISER DIAGRAM
NO SCALE

FLOW TEST DATA	
STATIC	90 PSI
RESIDUAL	82 PSI
FLOW	1061 GPM
ESTIMATED FLOW @ 20 PSI	7055 GPM
TEST DATE	12-10-2021
FLOW TEST BY	ANN ARBOR FD-BOMMARITO/BROWN

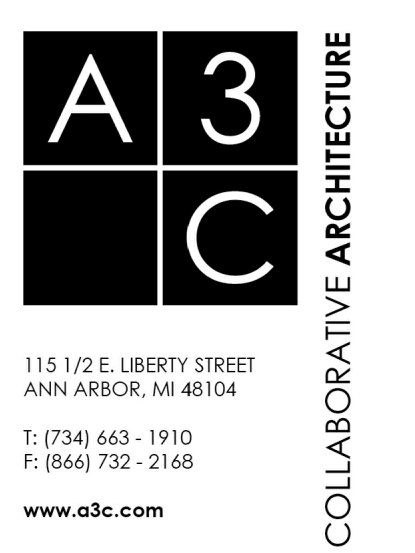


Project Number **21018**

Issue	Date
DESIGN DEVELOPMENT	05/26/23
BIDS/PERMITS	10/11/24

Drawn: ACF Checked: ACF

City of Ann Arbor
NEW FIRE STATION 4
2415 S HURON PKWY
ANN ARBOR, MI 48104
FIRE PROTECTION DETAILS



115 1/2 E. LIBERTY STREET
ANN ARBOR, MI 48104
T: (734) 663-1910
F: (866) 732-2168
www.a3c.com