

DRAWING INDEX	
NUMBER	SHEET NAME
GENERAL	G-000 COVER & DRAWING INDEX
ARCHITECTURAL	A-101 ARCHITECTURAL PLANS
ELECTRICAL	E-001 ELECTRICAL NOTES AND SYMBOLS
E-101	FIRST FLOOR ELECTRICAL PLAN
E-102	FIRST FLOOR LIGHTING PLAN
E-201	ELECTRICAL DETAILS

# CITY OF MILAN

## SENIOR CENTER REDESIGN

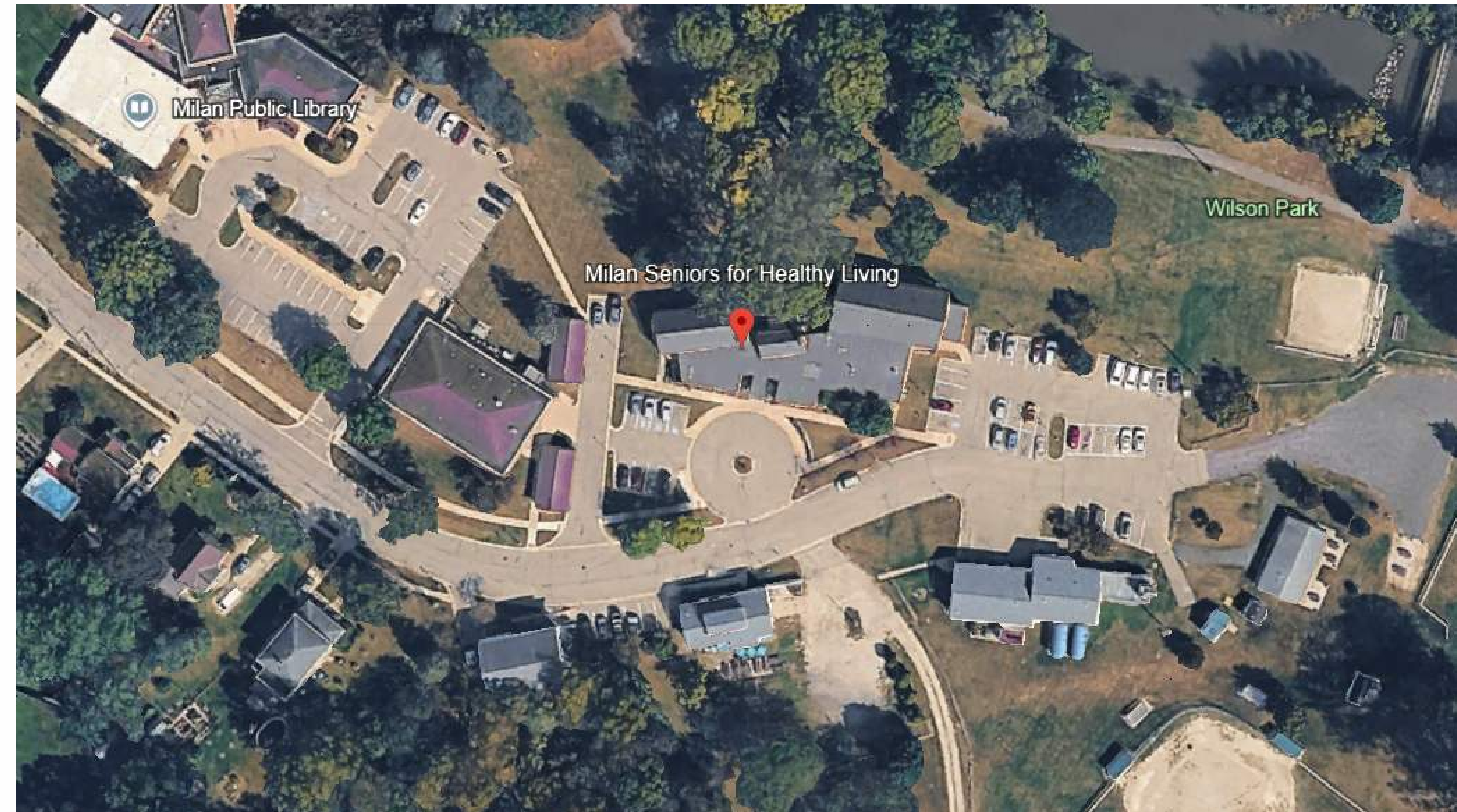
### 45 Neckel Ct, Milan, MI 48160

OHM PROJECT NO. 0185-25-0020



PRELIMINARY - NOT FOR CONSTRUCTION

ISSUED FOR BID PACKAGE 2025/12/23



## BID PACKAGE

ISSUED: 2025/12/23

**OWNER**  
 MILAN SENIORS FOR HEALTHY LIVING  
 JAMES LANCASTER  
 45 NECKEL CT  
 MILAN, MI 48160  
 734-439-1501  
 Jamesl@milanmi.gov

PROJECT NUMBER: 0185-25-0020  
 CITY OF MILAN  
 SENIOR CENTER REDESIGN  
 45 Neckel Ct, Milan, MI 48160  
 COVER & DRAWING INDEX

G-000

12/23/2025 12:58:31

J:\projects\0185-25-0020\Milan\_Senior\_Center\0185250020\_A\_Milan\_Senior\_Center\_2025\_CEN.rvt

COPYRIGHT 2025 OHM ALL DRAWINGS AND WRITTEN MATERIALS APPEARING HEREIN CONSTITUTE THE ORIGINAL AND UNPUBLISHED WORK OF OHM AND THE SAME MAY NOT BE DUPLICATED, DISTRIBUTED OR DISCLOSED WITHOUT PRIOR WRITTEN CONSENT OF OHM

FINISH ABBR.

BASE	
CT	CERAMIC TILE
RB	RESILIENT BASE
FLOORS	
CT	CERAMIC TILE
LVT	LUXURY VINYL TILE
WALLS	
CT	CERAMIC TILE
EPT	EPOXY PAINT
PT	PAINT
WC	WALL COVERING

GENERAL NOTES - DEMOLITION PLANS

- ALL DEMOLITION WORK IS TO BE COORDINATED WITH ABATEMENT WORK BY OWNER. REFER TO MECHANICAL ELECTRICAL & PLUMBING DEMOLITION PLANS FOR ADDITIONAL INFORMATION. COORDINATE DEMOLITION WORK WITH EXISTING SECURITY AND TECHNOLOGY BY OTHERS.
- PROVIDE DUST-PROOF CONSTRUCTION BARRIERS TO SEPARATE AND SECURE THE CONSTRUCTION AREA FROM THE REMAINDER OF THE BUILDING. PROVIDE TEMPORARY FILTERS AT RETURN AIR DUCTWORK AS REQUIRED TO MINIMIZE THE SPREAD OF DUST THROUGHOUT THE BUILDING.
- KEEP MEANS OF EGRESS OPEN, PROPERLY ILLUMINATED, AND FREE OF OBSTRUCTIONS AT ALL TIMES.
- PROVIDE TEMPORARY SHORING AS REQUIRED TO MAINTAIN THE STRUCTURAL STABILITY OF BUILDING ELEMENTS TO REMAIN DURING DEMOLITION THROUGH COMPLETION OF WORK.

GENERAL NOTES - PLANS

- DO NOT SCALE DRAWINGS. IF DIMENSIONS CANNOT BE DETERMINED OR DOCUMENTS ARE IN CONFLICT, THE CONTRACTOR SHALL OBTAIN CLARIFICATION FROM THE ARCHITECT PRIOR TO CONTINUATION OF WORK.
- GYP WALLS: SHERWIN WILLIAMS PROMAR 200 ZERO VOC INTERIOR LATEX, EG-SHEL
- WOOD TRIM: SHERWIN WILLIAMS PROMAR 200 ZERO VOC INTERIOR LATEX, EG-SHEL
- EPOXY PAINT ON GYP WALLS: SHERWIN WILLIAMS PRO INDUSTRIAL PRE-CATALYZED WATERBASED EPOXY, EG-SHEL
- METAL TOILET PARTITIONS: SHERWIN WILLIAMS PRO INDUSTRIAL DTM ACRYLIC, SEMI-GLOSS

SHEET KEYNOTES - DEMO. PLAN

- REMOVE VCT FLOORING. PATCH AND REPAIR FOR NEW FINISH.
- REMOVE WOOD WALL BASE. PATCH AND REPAIR FOR NEW FINISH.
- REMOVE OPERABLE PARTITION. COMPLETE.
- REMOVE EXISTING COUNTERTOP AND LAVATORIES AND FAUCETS.
- REMOVE EXISTING MIRROR.

SHEET KEYNOTES - PLAN

- WC-1 SHALL BE A WAINSCOT UP TO EXISTING WOOD CHAIR RAIL. PT-1 PAINTED ABOVE WAINSCOT UP TO FINISHED CEILING.
- EXISTING WOOD DOORS AND FRAMES TO BE PAINTED PT-3.
- EXISTING WOOD CHAIR RAIL TO BE PAINTED PT-2.
- TOILET PARTITIONS TO BE PAINTED PT-4.
- PROVIDE LAVATORIES- AMERICAN STANDARD, OVAL/VN UNDERCOUNTER SINK, COLOR: WHITE
- PROVIDE FAUCETS- SLOAN, OPTIMA E4F-350 FAUCET, FINISH: POLISHED CHROME.
- PROVIDE SOAP DISPENSERS- SLOAN ESD-360 TOP FILL SOAP DISPENSER, FINISH: POLISHED CHROME.
- ALTERNATE NO. 1: DEMO EXISTING WALL TILE, PATCH AND REPAIR FOR NEW FINISH CT-3.
- PATCH DAMAGED WALL TILE CT-2.
- FRAME IN OPERABLE PARTITION POCKET. DRYWALL TO BE CONTINUOUS WITH EXISTING WALL CONDITIONS. ADD DOOR TO MATCH EXISTING.
- RESURFACE VERTICAL FACES OF SERVICE COUNTER- PL-1, MULTI-PURPOSE ROOM SIDE ONLY.
- RESURFACE COUNTERTOP - PL-2.
- PROVIDE DOOR OPERATOR AND HANDICAP PUSH BUTTON: STANLEY M-FORCE AUTOMATIC SWING DOOR OPENER, REFERENCE ELECTRICAL.
- EXISTING CEILINGS TO REMAIN, REFERENCE ELECTRICAL FOR SCOPE OF WORK.

FINISH SELECTION LEGEND

LVT	MANUFACTURER	SHAW CONTRACT	PAINT	MANUFACTURER	SHERWIN WILLIAMS	
LVT-1	PRODUCT:	TERRAIN II 20 MIL	PT-1	PRODUCT:	ICE CUBE SW6252	
	SIZE:	6' X 48"	PT-2	PRODUCT:	PAINT TO MATCH BASE	
	COLOR:	SUMAC	PT-3	PRODUCT:	SHERWIN WILLIAMS	
			PT-4	PRODUCT:	GREEK VILLA SW7551	
RESILIENT BASE	MANUFACTURER:	JOHNSONITE	PT-5	PRODUCT:	SHERWIN WILLIAMS	
RB-1	PRODUCT:	MILLWORK WALL BASE	PT-6	PRODUCT:	SHERWIN WILLIAMS	
	PROFILE:	SILHOUETTE	PT-7	PRODUCT:	GRIFIN SW7026	
	HEIGHT:	4"	EPT-1	MANUFACTURER:	SHERWIN WILLIAMS	
	COLOR:	44 DARK BROWN	PT-8	PRODUCT:	ICE CUBE SW6252	
SOLID SURFACE	MANUFACTURER:	CORIAN	CERAMIC TILE	CT-1	MANUFACTURER:	DALTILE
SS-1	PRODUCT:	SOLID SURFACE	CT-2	PRODUCT:	KEYSTONES MOSAIC	
	COLOR:	ARTISTA CANVAS		SIZE:	2' X 2'	
				COLOR:	GOLDEN GRANITE	
LAMINATE	MANUFACTURER:	WILSONART	CT-3	MANUFACTURER:	DALTILE	
PL-1	PRODUCT:	RECOVER	CT-4	PRODUCT:	KEYSTONES MOSAIC	
	COLOR:	VERANDA TEAK		SIZE:	2' X 2'	
				COLOR:	UPTOWN TAUPE	
PL-2	MANUFACTURER:	WILSONART	CT-5	PRODUCT:	AMERICAN OLEAN	
	PRODUCT:	RECOVER		COLOR:	COLOR STORY WALL	
	COLOR:	MAGNOLIA		SIZE:	4' X 12'	
				COLOR:	ICE WHITE	
WALLCOVERING	MANUFACTURER:	KOROSEAL	CT-6	PRODUCT:	TBD	
WC-1	PRODUCT:	FLEX DECORATIVE WALL PROTECTION		GROUT COLOR:	TBD	
	STYLE:	THATCH				
	COLOR:	POPLAR THA1-91				

FINISH PLAN LEGEND

**ROOM FINISH INDICATOR**

ROOM NAME AND NUMBER PLUS GENERAL ROOM FINISH INFORMATION. FINISH TAGS SHALL APPLY TO ALL LIKE MATERIALS WITHIN A ROOM (UNO).

FINISH LEGEND IS GENERAL. REFER TO SPECIFICATIONS FOR SPECIFIC FINISH INFORMATION. MULTIPLE FINISH TYPES ARE DENOTED BY NUMBER FOLLOWING ABBREVIATION.

ROOM NUMBER: [101]

WALL FINISH (SEE ABOVE): [PT-2]

BASE (SEE ABOVE): [VB-1]

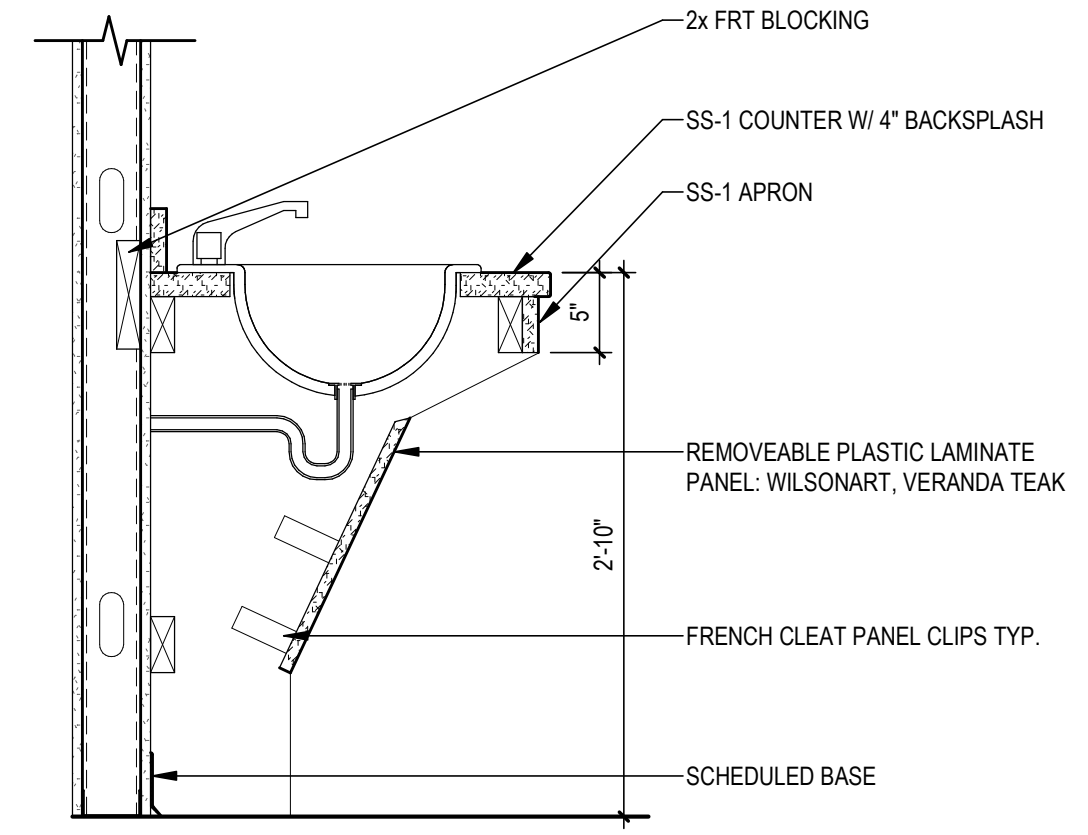
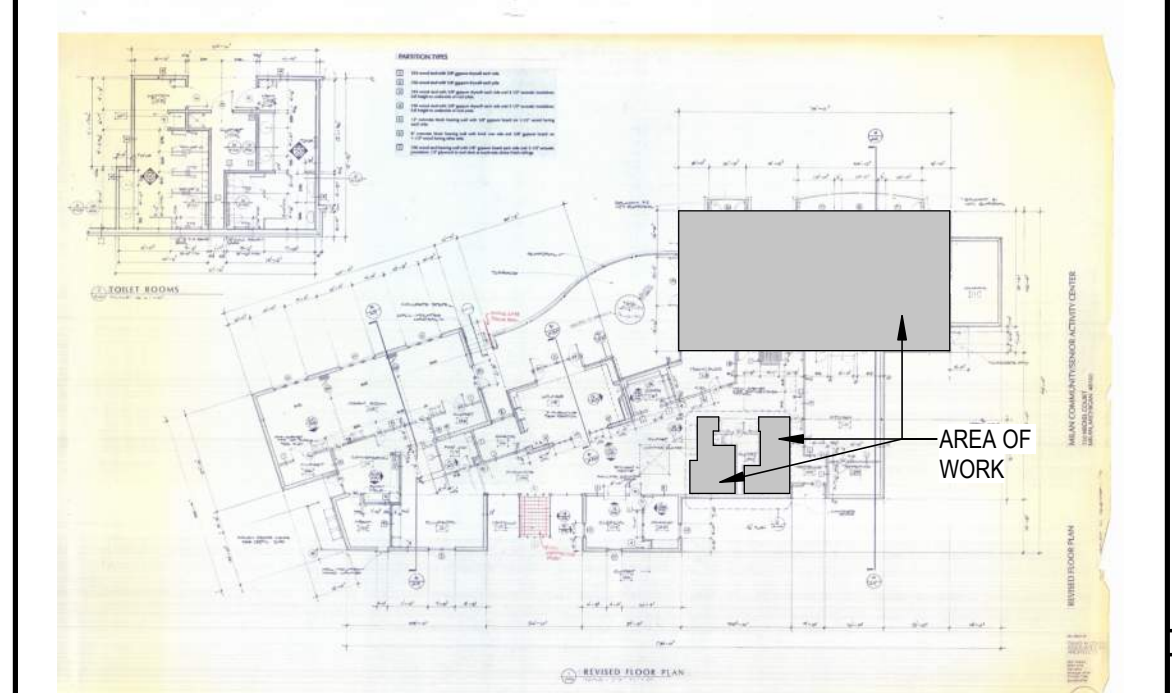
FLOOR FINISH (SEE ABOVE): [EPT-P]

Denotes PATTERN DETAIL. REFER TO SHEET KEYNOTES ABOVE.

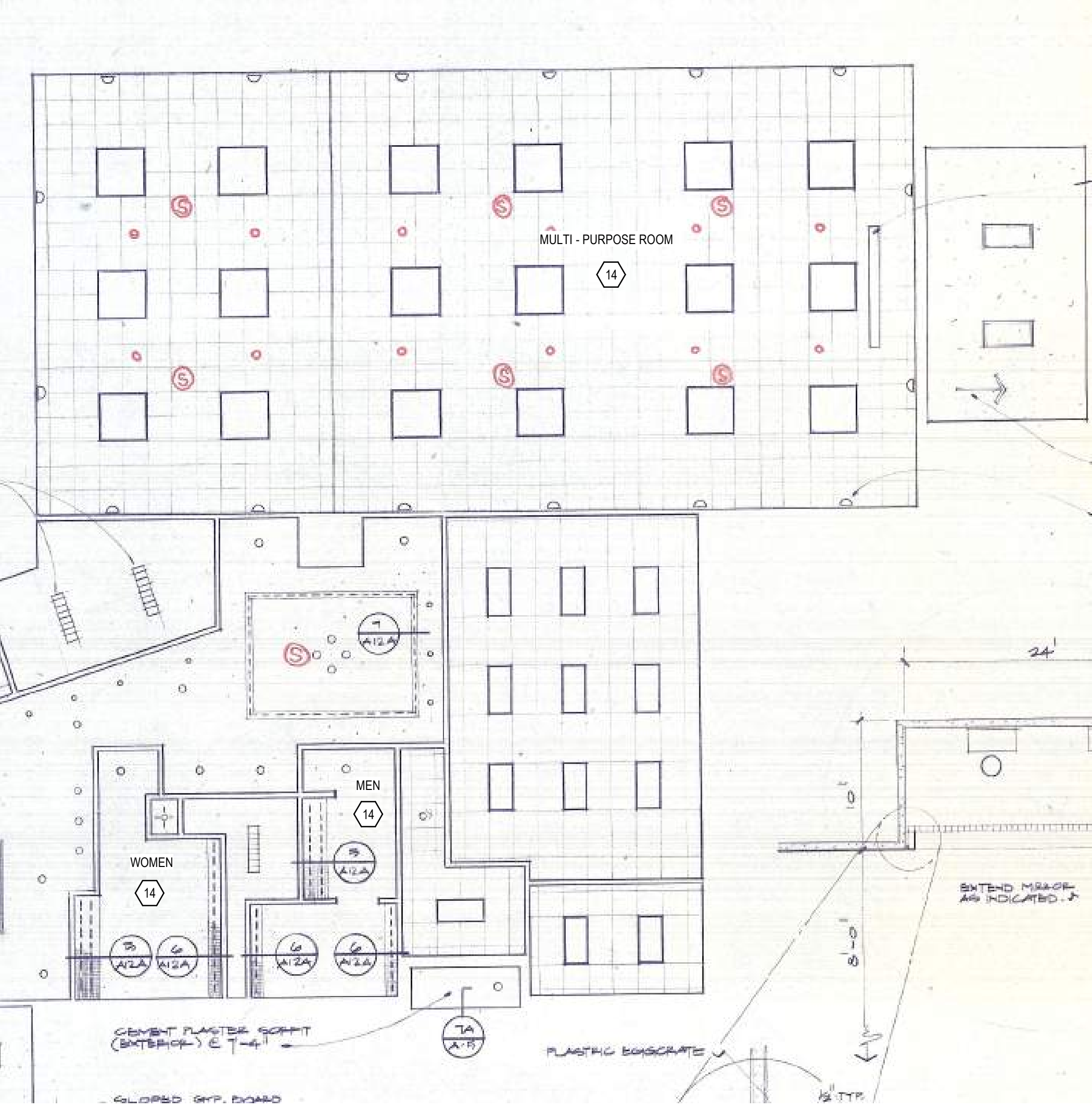
FINISH EXTENTS: [PT-2] 12'-0"

? PL-1 PLASTIC LAMINATE TYPE / COLOR (TAG APPLIES TO ALL CABINETS AND/OR COUNTERTOPS WITHIN THAT SPACE, UNO)

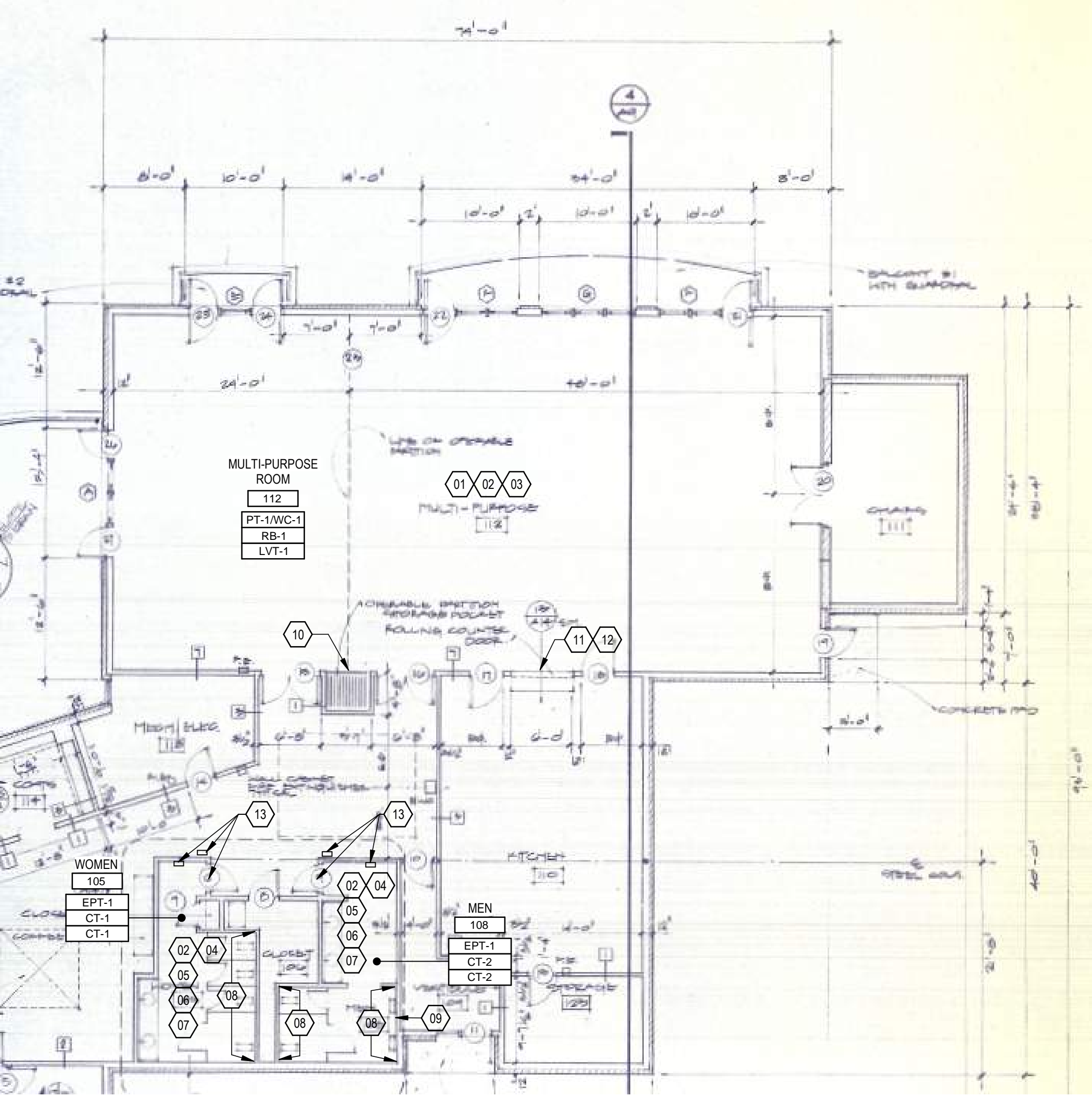
KEY PLAN



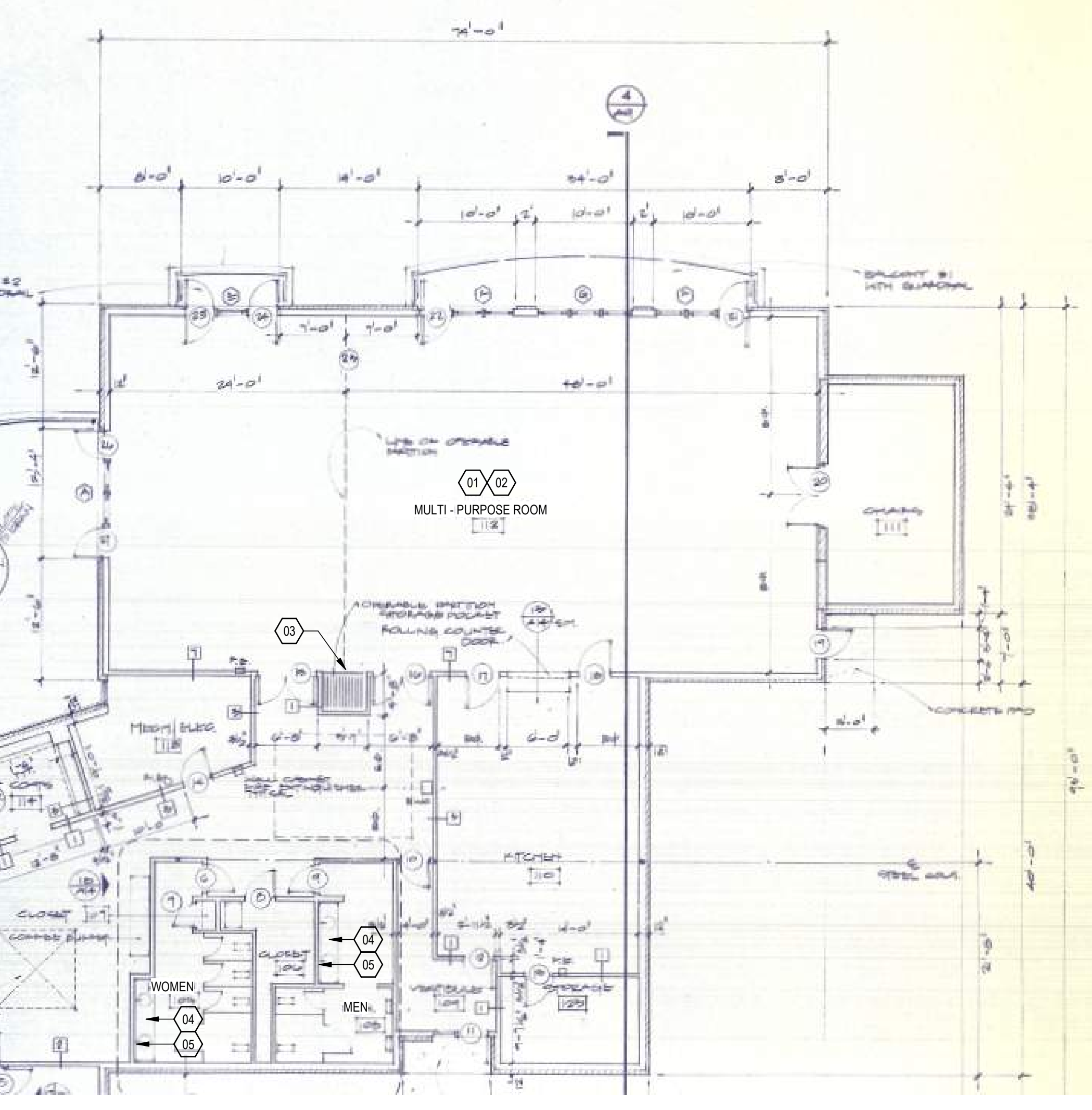
4 Counter Detail  
1" = 1'-0"



3 REFLECTED CEILING PLAN  
N.T.S.



2 FLOOR PLAN  
N.T.S.



1 DEMO PLAN  
N.T.S.

### GENERAL NOTES - ELECTRICAL

- ALL ELECTRICAL INSTALLATIONS SHALL BE IN ACCORDANCE WITH THE CURRENT NATIONAL ELECTRICAL CODE, CURRENT STATE OF MICHIGAN ELECTRICAL CODE (PART 8), AND ANY LOCAL AMENDMENTS.
- THE ELECTRICAL CONTRACTOR SHALL BE RESPONSIBLE FOR THE ACQUISITION OF AN ELECTRICAL PERMIT AND SCHEDULING OF THE NECESSARY INSPECTIONS. UPON COMPLETION OF THE WORK THE ELECTRICAL CONTRACTOR SHALL PROVIDE THE OWNER EVIDENCE OF INSPECTION APPROVAL.
- THE ELECTRICAL CONTRACTOR SHALL BE RESPONSIBLE FOR ALL COORDINATION REQUIRED WITH THE ELECTRIC UTILITY SERVING THE FACILITY. UTILITY COSTS SHALL BE PAID SEPARATELY BY THE OWNER.



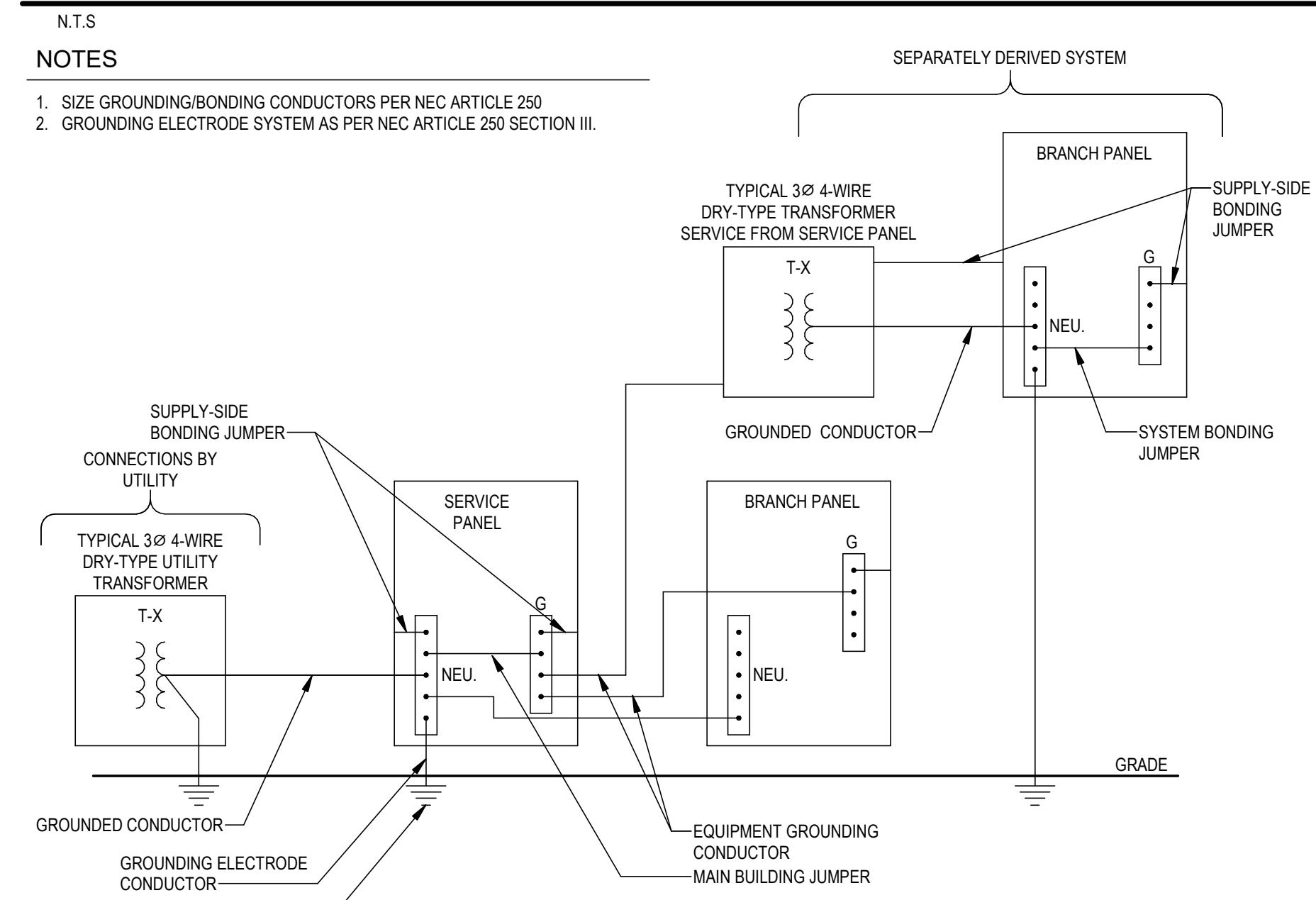
PRELIMINARY - NOT FOR CONSTRUCTION

ISSUED FOR SCHEMATIC DESIGN

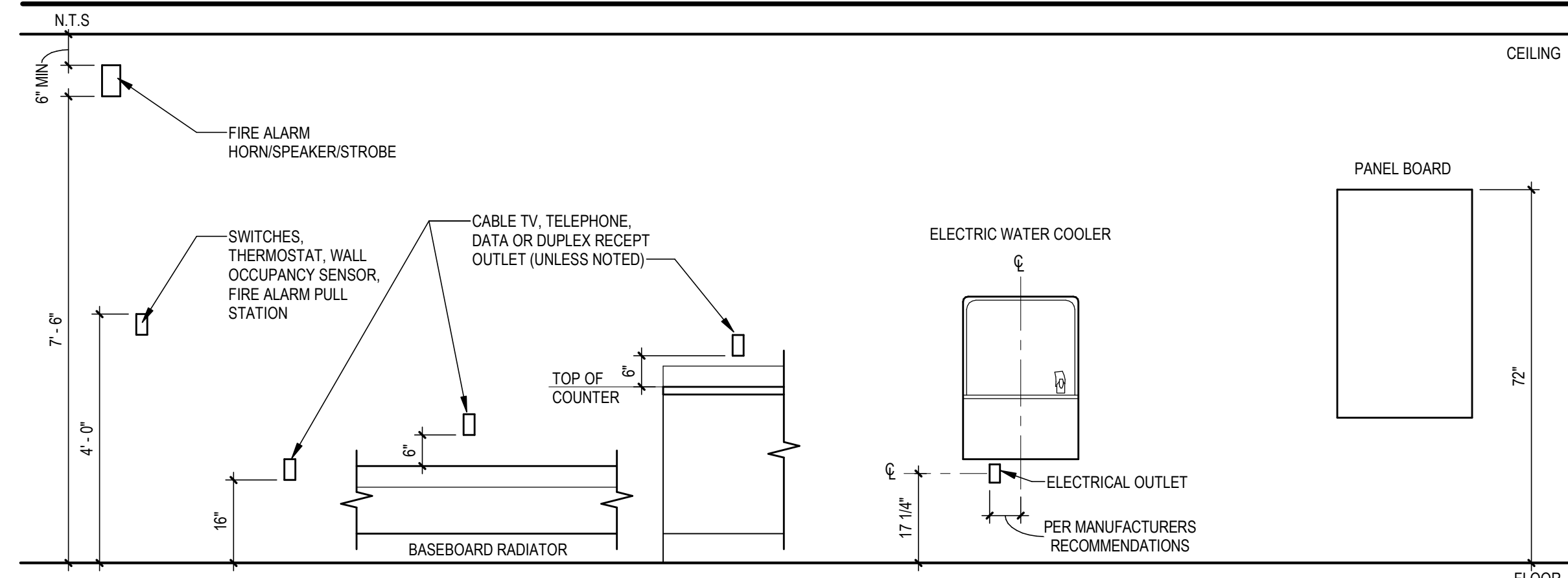
### ELECTRICAL ABBREVIATIONS

PHASE	PHASE
AMPERE	AMPERE
ABOVE FINISHED FLOOR	ABOVE FINISHED FLOOR
CONDUIT	CONDUIT
CATALOGUE	CATALOGUE
CIRCUIT BREAKER	CIRCUIT BREAKER
CIRCUIT	CIRCUIT
CONCRETE MASONRY UNIT	CONCRETE MASONRY UNIT
COMPANY	COMPANY
CABINET UNIT HEATER	CABINET UNIT HEATER
ELECTRICAL CONTRACTOR	ELECTRICAL CONTRACTOR
EXHAUST FAN	EXHAUST FAN
ELECTRIC WATER COOLER	ELECTRIC WATER COOLER
FIRE ALARM	FIRE ALARM
FIRE ALARM CONTROL PANEL	FIRE ALARM CONTROL PANEL
GROUND FAULT CIRCUIT INTERRUPTER	GROUND FAULT CIRCUIT INTERRUPTER
EQUIPMENT GROUND	EQUIPMENT GROUND
HEATING VENTILATING & AIR CONDITIONING	HEATING VENTILATING & AIR CONDITIONING
KEY OPERATED DEVICE	KEY OPERATED DEVICE
KILOVOLT-AMPERES	KILOVOLT-AMPERES
KILOWATTS	KILOWATTS
LIGHT EMITTING DIODE	LIGHT EMITTING DIODE
MAIN CIRCUIT BREAKER	MAIN CIRCUIT BREAKER
MAIN DISTRIBUTION PANEL	MAIN DISTRIBUTION PANEL
MISCELLANEOUS	MISCELLANEOUS
MAIN LUG ONLY	MAIN LUG ONLY
MOUNTED	MOUNTED
NEUTRAL	NEUTRAL
NUMBER	NUMBER
PILOT	PILOT
RECEPTACLE	RECEPTACLE
TELEPHONE	TELEPHONE
TELEVISION	TELEVISION
TYPICAL	TYPICAL
UNDERGROUND ELECTRIC	UNDERGROUND ELECTRIC
UNIT HEATER	UNIT HEATER
UNLESS NOTED OTHERWISE	UNLESS NOTED OTHERWISE
VOLT	VOLT
VOLT-AMPERES	VOLT-AMPERES
WIRE	WIRE
WIRELESS ACCESS POINT	WIRELESS ACCESS POINT
WEATHERPROOF	WEATHERPROOF
TRANSFORMER	TRANSFORMER

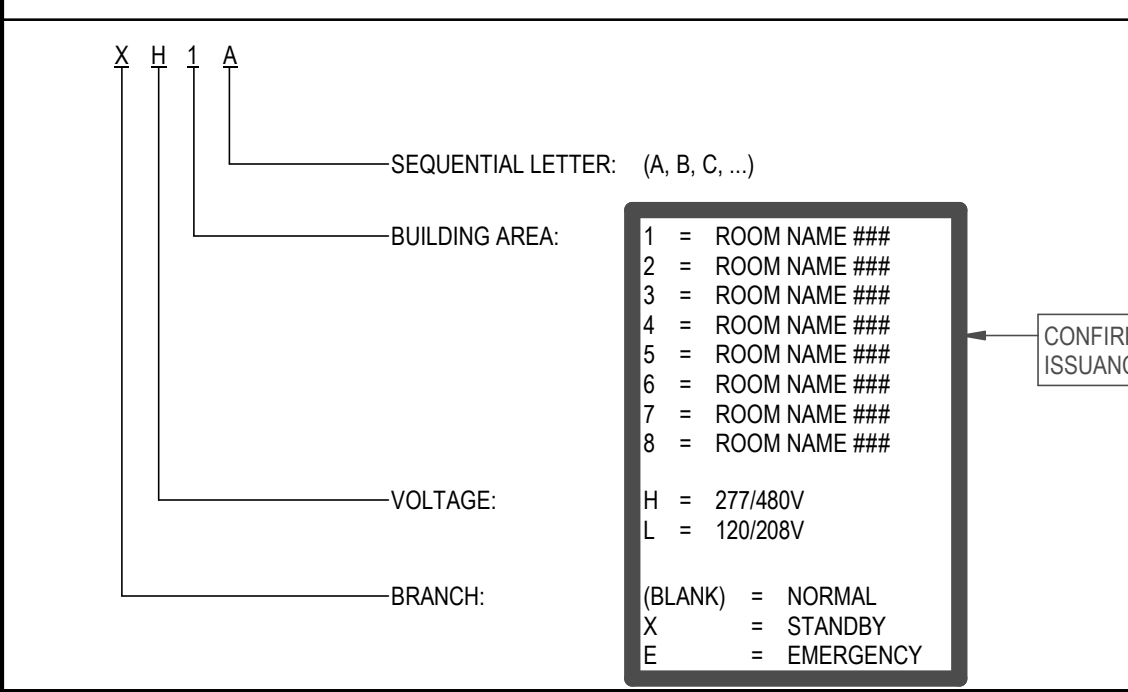
### GROUNDING BONDING DIAGRAM



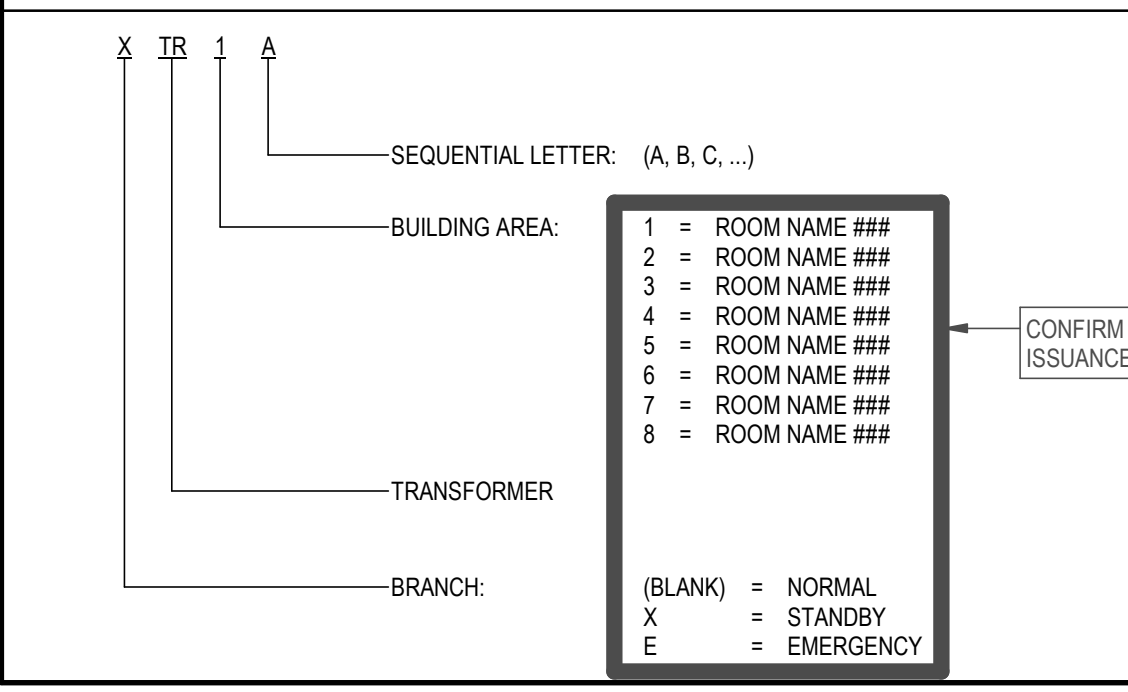
### TYPICAL MOUNTING HEIGHTS



### PANELBOARD TYPE KEY



### TRANSFORMER TYPE KEY



### ELECTRICAL SYMBOLS LEGEND

<b>LIGHT FIXTURES</b> (LF-1) LIGHT FIXTURE INDICATOR H HUB CONTROLLER Z LIGHTING ZONE SURFACE / CEILING MOUNT PENDANT / CHAIN MOUNT EMERGENCY PENDANT / CHAIN MOUNT RECESSED MOUNT EMERGENCY RECESSED MOUNT COMBINATION FAN / LIGHT TRACK STRIP WALL MOUNT EMERGENCY WALL MOUNT EXTERIOR POLE MOUNT EXTERIOR POST MOUNT EMERGENCY WALL PACK EXIT SIGN CEILING FAN <b>POWER DISTRIBUTION</b> DISCONNECT SWITCH FUSED DISCONNECT SWITCH COMBINATION MOTOR STARTER WITH DISCONNECT SWITCH MOTOR STARTER ELECTRICAL METER DISTRIBUTION PANEL ELECTRICAL POWER PANEL SURFACE MOUNT ELECTRICAL POWER PANEL FLUSH MOUNT LIGHTING CONTROL PANEL RELAY ELECTRICAL TRANSFORMER ELECTRICAL PULL BOX JUNCTION BOX (CLG)(WALL)(FLR) SINGLE PHASE MOTOR THREE PHASE MOTOR VARIABLE FREQUENCY DRIVE	<b>RECEPTACLE OUTLETS</b> SIMPLEX RECEPTACLE DUPLEX GROUNDING RECEPTACLE MOUNTED ABOVE COUNTER GROUND FAULT CIRCUIT INTERRUPTER GFCI - MOUNTED ABOVE COUNTER TAMPER-PROOF DUAL USB PORTS DUAL USB PORTS ABOVE COUNTER WEATHERPROOF RECEPT & COVER, GFI 208/240/480V 1Ø STRAIGHT BLADE RECEPTACLE QUADRUPLX RECEPTACLE DUPLEX RECEPTACLE ON EMERGENCY POWER FLOOR BOX CEILING BOX SPECIALTY RECEPTACLE <b>SWITCHES</b> SWITCHES: X = DESIGNATION BELOW H = HUB CONTROLLER Z = LIGHTING ZONE SINGLE POLE TWO POLE THREE WAY FOUR WAY DIMMER FAN KEY OPERATED LOW VOLTAGE MOTION DETECTION OCCUPANCY SENSOR PILOT LIGHT TIMER <b>SENSORS</b> DAYLIGHT MOTION DETECTION OCCUPANCY VACUANCY HUB CONTROLLER LIGHTING ZONE <b>TELEPHONE/COMMUNICATIONS</b> (CLG) (WALL) (FLR) (FURN) X = NUMBER AND TYPE OF PORTS C COAXIAL PORT D DATA PORT H HDMI PORT P PHONE PORT W WIRELESS ACCESS POINT INTERCOM CALL BOX BELL MICROPHONE JACK POWER SUPPLY REQUIRES WIRE GUARD NURSE NURSE CALL MAIN PANEL NURSE NURSE CALL PULL STATION NURSE NURSE CALL LIGHT CLOCK <b>SECURITY</b> CARD READER MAGNETIC SWITCH (DOOR CONTACT) ELECTRONIC DOOR LOCK MOTORIZED DOOR OPERATOR ELECTRIC STRIKE KEYPAD ENTRY DEVICE ENTRANCE CALL SYSTEM (CEILING) (WALL) (360 VIEW) SECURITY CAMERA PANIC ALARM SPEAKER/STROBE INDICATES EXISTING <b>OTHER SYMBOLS</b> (XX-X) EQUIPMENT INDICATOR INDICATES EXISTING
---	--

### RACEWAY / CONDUITOR NOTES

UNDERGROUND WIRING	NEW	EXISTING	DEMOLISH
SWITCH LOOP WIRING			
UN-SWITCHED HOT WIRING			
LOW VOLTAGE WIRING			
DATA WIRING			

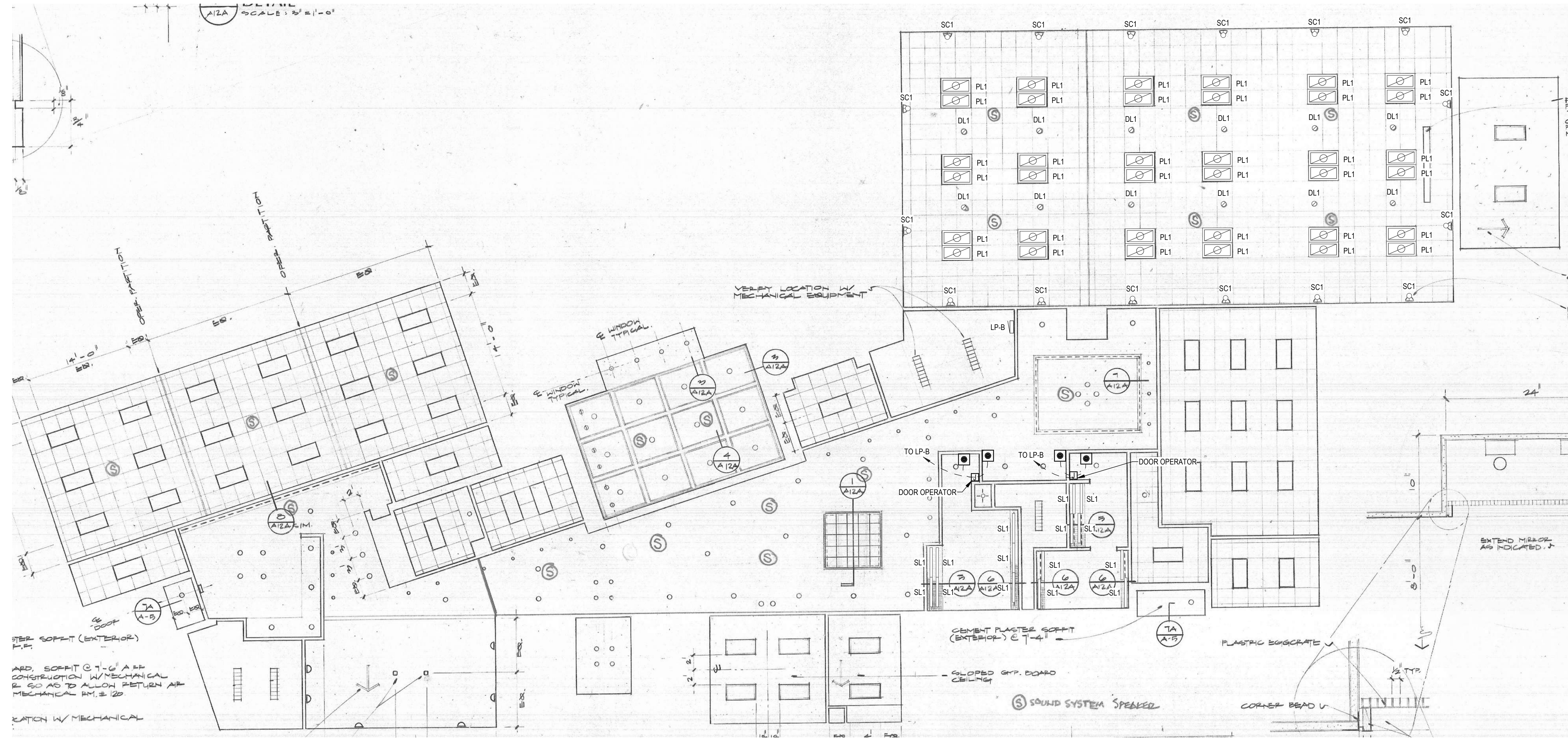
GENERAL NOTES - ELECTRICAL

- 1. PLACEHOLDER
- 2. PLACEHOLDER
- 3. PLACEHOLDER
- 4. PLACEHOLDER

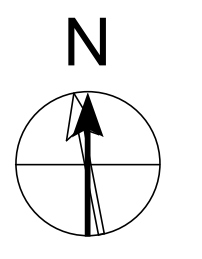


PRELIMINARY - NOT FOR CONSTRUCTION

ISSUED FOR SCHEMATIC DESIGN 2025.MDDY



**1** FIRST FLOOR ELECTRICAL PLAN  
1/8" = 1'-0"



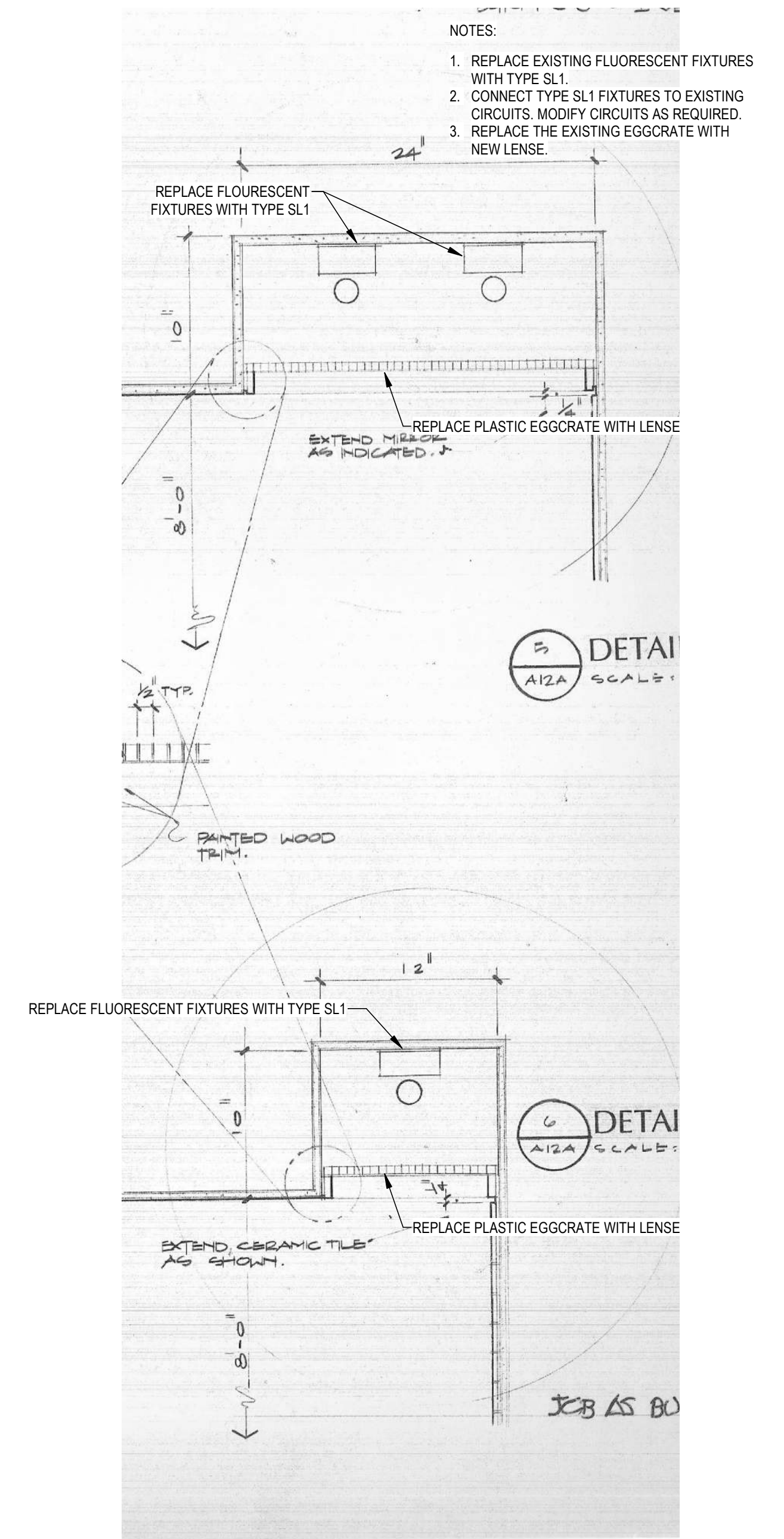
PROJECT NUMBER  
07625-0020  
PM  
CITY OF MILAN  
SENIOR CENTER REDESIGN  
45 Neebel Ct, Milan, MI 48160  
FIRST FLOOR ELECTRICAL PLAN

COPYRIGHT 2025 CH2M HILL. ALL DRAWINGS AND WRITTEN MATERIALS APPEARING HEREIN CONSTITUTE THE ORIGINAL AND UNPUBLISHED WORK OF CH2M HILL AND THE SAME MAY NOT BE REPRODUCED, DISTRIBUTED OR DISCLOSED WITHOUT THE WRITTEN CONSENT OF CH2M HILL.

## LIGHTING FIXTURE SCHEDULE

SCHEDULE NOTES:  
 1. REUSE EXISTING FIXTURE  
 2.  
 3.

TYPE	DESCRIPTION	MFR.	CATALOG #	LAMPS	WATTS	NOTES
DL1	DOWN LIGHT			LED		
PL1	2X4 PANEL	LITHONIA	CPX-2X4-AL07-80CRI-SWW7	LED	48	
SC1	SCONCE	LIGHTWAY	LXTW-11-LED-F10-2	LED	10	MULTI-PURPOSE ROOM WALL SCONCE FINISHES: SATIN BRONZE, WHITE TEXTURED POLYCARBONATE DIFFUSER
SL1	LINEAR	COLUMBIA	MPS4-35	LED		PROVIDE NEW LENSES FOR RESTROOM
WP1	WALL PACK	LITHONIA	WDGE2-P3-3500K-80CRI-MVOLT	LED	23	



**1** RESTROOM LIGHTING DETAIL  
 1/8" = 1'-0"